

Annual Report

2016



Jepson Parkway Construction - Vacaville

Message from the Executive Director

In 2016, Solano Transportation Authority continued successful efforts to plan and implement a countywide transportation system connecting Solano County to the Bay Area and Sacramento regions and supporting the community mobility goals of our seven cities and the County.

In 2016, while the State of California struggled to find a legislative solution to the state's growing transportation funding shortfall, STA received support from the California Transportation Commission for the allocation of \$33 million for construction phases of the Jepson Parkway in Fairfield and Vacaville.

2016 was the year that STA celebrated the opening of the first major phase of the I-80/I-680/SR 12 Interchange; completed 65% design for the Solano I-80 Express Lanes project; received a Caltrans statewide award for the SR 12 Jameson Canyon Widening Project; and started working with our partners in Napa, Sonoma, Marin, Caltrans and MTC to address the traffic, flooding and adaptation issues pertaining to SR 37. Locally, STA secured federal funding for the South Gate (Travis Air Force Base) – Petersen Road project in the County and Suisun City, and the Rocky Hill Trail in Vacaville.

Several important plans were completed in 2016 including the 2016 Solano Travel Safety Plan, the 2015 Congestion Management Plan (CMP), the 2nd Solano County Coordinated Short Range Transit Plan, the Active Transportation and Transit Elements of the STA's Countywide Transportation Plan (CTP), and the region's first Priority Conservation Area (PCA) Plan. Through the CTP process, over 58,000 Solano residents were able to participate in telephone town halls, surveys, and multiple community presentations.

2016 was the year that STA continued its successful efforts to provide mobility solutions and programs for Solano County's residents. The management of the Intercity Taxi Scrip program was transferred from the County to STA. The new Solano Mobility Call Center reopened at the historic Suisun City Train Depot with renovations funded by STA. The management of Rio Vista's Delta Breeze transit service was assumed by STA. In partnership with Solano Community College (SCC) and the three largest transit operators, STA implemented a half price fare for SCC students. Over 17,000 students participated in our Safe Routes to School program which partners with Solano County Public Health and all seven school districts that serve Solano County.

Thanks to the leadership of the STA Board and the hard work and dedication of STA staff and our various partner agencies, a number of new plans were completed, projects were advanced and programs were implemented to serve the mobility needs of students, seniors, persons with disabilities, commuters, employers and their employees.

Daryl K. Halls

Our Mission...

"To improve the quality of life in Solano County by delivering transportation projects to ensure mobility, travel safety, and economic vitality."

2016 STA Board



Norman Richardson,
Chair
Mayor,
City of Rio Vista



Jim Spering,
Vice Chair
Supervisor,
District 3
Solano County



Jack Batchelor, Jr.,
Mayor,
City of Dixon



Elizabeth Patterson,
Mayor,
City of Benicia



Harry Price,
Mayor,
City of Fairfield



Pete Sanchez,
Mayor,
City of Suisun City



Len Augustine,
Mayor,
City of Vacaville



Osby Davis,
Mayor,
City of Vallejo

2016 Highlights

FIRST QUARTER

Adopted the 2016 Solano Travel Safety Plan providing for improved road safety.

Adopted the 2015 Solano Congestion Management Plan (CMP) Update, a foundational document for tracking operational status of freeways, highways, and roadways in Solano County. The CMP provides the basis for STA's review and comment on major land use and transportation projects affecting the transportation system in Solano County.

Approved funding agreement with Transportation Authorities in Napa, Marin, and Sonoma Counties to conduct SR 37 Financial Opportunities Analysis.

SECOND QUARTER

Caltrans prioritized the I-80/I-680/SR 12 Interchange project as one of only 3 California Priority Freight Project candidates for federal FASTLANES funds.

California Transportation Commission allocated \$33M in State Improvement Transportation Program (STIP) funds for two segments of the Jepson Parkway Project.

STA Solano Mobility Program hosted Solano Seniors and People with Disabilities Transportation Summit III in Fairfield, identifying program priorities of the community.

Executed a contract with the City of Rio Vista for STA to provide transit management for Rio Vista Delta Breeze, and allocated \$74,880 in State Transportation Assistance Funds for Transit Finance and Compliance.



THIRD QUARTER

Approved \$440K in Transportation Development Act (TDA) Article 3 funds for Countywide Bicycle and Pedestrian Plans, Solano County Suisun Valley Farm to Market Program and City of Fairfield Northern Green Valley Road Crossing.

Taxi Scrip program management transferred from Solano County to STA, and STA implemented fare adjustments and low income fares.

Celebrated with Caltrans the grand opening of the I-80/I-680/SR 12 Construction Package 1 project.

Adopted the Solano Priority Conservation Area (PCA) Assessment and Implementation Plan.

Received a Caltrans State Safety Grant for \$555,555 for STA's Countywide Systemic Safety Analysis Report Program to follow up the 2015 STA Countywide Safety Plan.

SR 12 Jameson Canyon Project received its third statewide award from Caltrans as their top Rural Highway Project for 2016.

FOURTH QUARTER

Hosted Mobile Workshop in Suisun City for Rail-Volution National Conference.

Hosted 19th Annual STA Awards Ceremony at the Veteran's Memorial Hall in Rio Vista.

STA's FY 2015/16 audit received an unqualified report (no findings) for the 11th year in a row.

Adopted 2nd Solano County Coordinated Short Range Transit Plan (SRTP), comprised of 5 local SRTPs.

Approved Solano Community College Student Transportation Fee for half-price student fares on FAST, SolTrans, and City Coach buses.

Submitted 65% design plans for I-80 Express Lanes to Caltrans.



Safe Routes to School

241 activities - 7 school districts
17,617 students participating



Alternative Fuels

Implementation of Electric Vehicle
Readiness Program in Solano County



Solano Intercity Taxi Scrip Program

12,246 Passenger trips



Solano Mobility Website

Over 20,000 views
Average of 1,829 views per month



Abandoned Vehicle Abatement Program

5,781 vehicles abated countywide



Emergency Ride Home

43 Registered Employers
41 Emergency Rides Home Taken



Solano Mobility

1,332 completed ADA Assessments



Solano Napa Commuter Info

2016 Solano Commute Challenge:
23 employers/234 Commute Champions



Solano Mobility Call Center

1,573 phone customers
217 walk-in customers served



Local Preference Policy

\$2.1 Million in local purchases



Suisun City Train Depot Renovation

October 2016, renovation is completed,
providing a walk-in location for the Solano
Mobility Call Center.

Solano Safe Routes to School Program

20th International
Walk to School Day:
45 Schools
9,455 students

National Bike to School Day:
26 Schools
1,421 students

SolanoMobility 5 Travel Training Programs 1,081 In Person ADA Assessments

Hosted the 3rd Solano County
Seniors and People with
Disabilities Transportation
Summit in Fairfield

Solano Napa Commuter Information

22nd Annual Bike to Work Day
19 Energizer Stations
400 Bicyclist Participants

Awards and Recognition



The STA's Mobility Management Travel Training Program received a statewide award from the California Transportation Foundation.

The STA's Solano Mobility Programs were awarded the Excellence in Motion Award by the Metropolitan Transportation Commission.



The SR 12 Jameson Canyon Project received its third statewide award from Caltrans as their Top Rural Highway Project for 2016.



19th Annual STA Awards Ceremony

The STA hosted the 19th Annual STA Awards ceremony at the Veterans Memorial Hall in Rio Vista. Through the generosity of our sponsors, the event was held without the use of taxpayer money. Local agencies, programs, and individuals were recognized for their efforts to improve transportation in Solano County.



Planning: For Solano County's Future Transportation Needs

Bay Trail/Vine Trail Gap Closure Project

Making bike connections from the Vallejo Ferry to Napa
Active Transportation Program (ATP) Project

March 2016



In Fall 2016, the the **Bay Trail/Vine Trail Gap Closure Project** connecting the Vallejo Ferry Terminal/ Waterfront along Wilson Avenue to the City of American Canyon in Napa County, was awarded a \$4.2 million regional Active Transportation Program (ATP) grant from the California Department of Transportation.

This project will fill a 3.64 mile gap and provide infrastructure improvements to link the Napa Vine Trail and the San Francisco Bay Trail, providing opportunity to link areas of the City of Vallejo divided by SR 29 and SR 37.

Solano County Travel Safety Plan



STA Solano Travel Safety Plan 2016



Adopted in January 2016, the 2016 **Solano Travel Safety Plan** (Plan) addresses safety concerns of all people traveling on public roadways in Solano County.

The Plan documents safety-related projects completed since the most recent plan update in 2005, lists locations of current priority project locations, and proposes changes to improve safety throughout the County. The Safety Plan will guide STA when prioritizing funding for plans, programs, and projects in preparation for future funding opportunities that may become available to address safety concerns at various locations throughout Solano County.

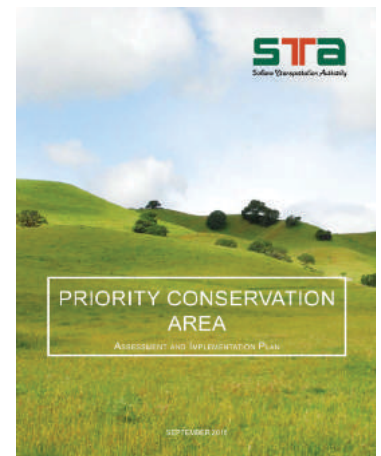
For the 2016 Plan update, the STA formed the Solano Travel Safety Plan Technical Working Group with representatives from each member agency to identify current locations where safety concerns have been identified.

Solano Priority Conservation Area Assessment and Implementation Plan (PCA)

The adoption of the first **Solano PCA Assessment and Implementation Plan** in September 2016, culminates the two-year effort to understand and implement the Association of Bay Area Governments (ABAG) guidelines and to identify transportation projects to enhance the open space and agricultural land in Solano County. The most noteworthy section of the Plan is the Next Steps section, which contains two important features: a prioritized list of improvement projects within PCAs, and identification of areas which ought to be considered for future PCA designation.

There are 6 designated areas in the current plan:

- Vacaville-Fairfield-Solano Greenbelt and Cement Hill
- Blue Ridge Hills (Vaca Mountains)
- Western Hills (including part of the Vallejo Lakes Property)
- Tri City and County Cooperative Planning Area
- Bay Trail and Ridge Trail
- Suisun Valley



Comprehensive Transportation Plan Update

Solano County's Streets Need Fixing



The **Comprehensive Transportation Plan (CTP)** identifies and prioritizes the transportation needs and funding throughout Solano County through the year 2040. The Plan consists of three main elements. In 2016, the Active Transportation, and the Transit and Rideshare elements were adopted. The Arterials and Highways element update is in process, and will be available for comment in 2017 with adoption planned for 2018.

In an effort to include public comments and priorities, the STA conducted 3 Telephone Town Hall meetings (2,400 participants), online and mail-in surveys (1,700 responses) and multiple public presentations in all 7 cities as part of STA's public process for the Comprehensive Transportation Plan. Overall the CTP Public Outreach effort reached over 58,000 Solano County Residents.



Comprehensive Transportation Plan (CTP) Outreach Events



2040 

 **Solano**
TRANSPORTATION PLAN

Your ride, your voice, your plan

Projects:

Improving Solano County's Transportation Future



I-80/I-680/SR 12 Interchange Package Phase I

On August 9, 2016, the I-80/I-680/SR 12 Interchange was the site of the ceremonial ribbon cutting for the first construction package for Phase I of this seven phase project. The interchange improves the connector routes from westbound I-80 to westbound SR 12 and modifies the westbound onramp from Green Valley Road, as well as the I-80/Green Valley Road Interchange.

The Project constructed a two-lane westbound I-80 to westbound SR 12 connector, including an auxiliary lane on I-80. The project reduces congestion, improves highway operations and mobility, by braiding the connector and the auxiliary lane to eliminate traffic merging and queuing onto I-80.

The Project is being developed through a partnership among the STA, the Metropolitan Transportation Commission, California Transportation Commission, Federal Highway Administration, and the California Department of Transportation.



Rocky Hill Trail - Vacaville

In 2009, Vacaville's REACH Youth Coalition surveyed youth and identified the Rocky Hill path as a top concern. REACH Youth developed a vision for the crime-ridden path, and went to City meetings in order to have the path included in the General plan and recognized as an official bike trail. In the Fall of 2016, the trail was paved and inaugurated. This work was made possible through partnerships with the City of Vacaville, Solano County, elected officials and funding partners such as Yolo-Solano Air Quality Management District. The REACH Coalition participated in the Safe Routes to School Pilot Program and continues to conduct surveys to identify additional needs.

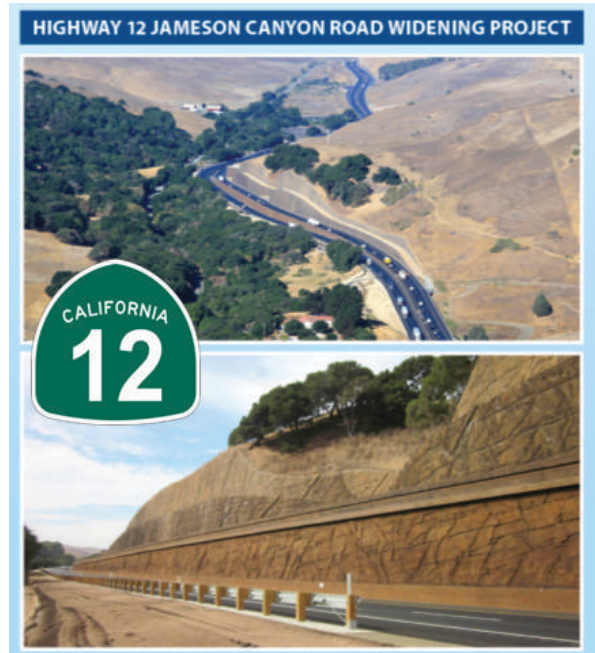
SR 12 / Jameson Canyon Widening Project Wins 3rd Statewide Award from Caltrans as the Top Rural Highway Project for 2016

This Project is part of the I-Bond Corridor Mobility Improvement Account program. The Project widens State Route (SR) 12 from two to four lanes, from the Napa County Line, to Red Top Road in Solano County. This Project is 5.8 miles long with 2.8 miles in Solano County.

Commercial growth in Napa and Sonoma Counties and population growth in Solano County have significantly increased commuting and congestion on SR 12. The purpose of the Project is to provide additional capacity and reduce congestion.

With the addition of shoulders, barriers and turn-outs it more than doubles the capacity of the roadway. This Project reduces travel delay, decreases congestion, and improves mobility in the corridor between Solano and Napa Counties. This portion of SR 12 is also multi-modal, already hosting the Vine Route 21, and is designed and permitted to allow bicycle traffic through Jameson Canyon.

The \$139M Project was developed through a partnership between the STA, Napa County Transportation and Planning Agency, and Caltrans. The Project was delivered on time and below initial cost estimate due to the design and construction timing.



South Gate (Travis Air Force Base) Project - Petersen Road



In June 2016, the South Gate Project for Travis Air Force Base was completed off Petersen Road. The South Gate entrance gives entry to a steady flow of truck traffic, causing a backup for vehicles and bicyclists on this road. The project provides a truck traffic queuing lane and bi-directional bike path. Previously, the truck traffic awaiting entrance into South Gate would back up all traffic. With the reconfiguration and bike lane improvements, drivers and bicyclists have a safer, less stressful experience on Petersen Road. This improvement also allows for better access to the Lambrecht Sports Complex.



Programs:

Improving Solano County's Transportation Options

Seniors and People with Disabilities Transportation Summit III



On May 6, 2016, the Solano Mobility Program held the 3rd Seniors and People with Disabilities Transportation Summit. The Summit was a follow-up to the first two held in 2009, with the purpose to continue the conversation about the transportation issues facing some of the most vulnerable residents in Solano County.

Over 120 people participated in this Transportation Summit where the progress since the previous two summits was presented, and conversations were facilitated around identifying continued transportation gaps and challenges for Solano County's seniors and people with disabilities. Some of the feedback gathered identified top priorities for this population through discussion and surveys collected from participants. In 2017-2018 local city summits will be planned to further identify mobility needs and provide current service information for seniors and people with disabilities.

Suisun City Train Depot - Home to Solano Mobility Transportation Info Depot Reopens

In October, the Suisun City Train Depot Ribbon Cutting event was held to re-open the historic depot building. The building was renovated with new paint, landscaping on the street, and a new street front sign, featuring the seal of Suisun City. The depot houses the Solano Mobility Call Center's Transportation Info Depot, a walk-in and call-in assistance program that provides information for the transportation and mobility needs for all Solano County visitors, employers and residents.

The Transportation Info Depot, is open to help the public weekdays (excluding federal/state holidays) from 7:00am to 3:00pm. The Solano Mobility Call Center also provides the same transportation help weekdays from 3:00pm to 5:00pm at the main office located at One Harbor Center, Suite 140, Suisun City, Ca 94585.



Solano Safe Routes to School (SR2S)

In 2016, the Solano Safe Routes to School Program partnered with 63 schools countywide with over 15,000 students participating in events such as International Walk to School Day, Bike to School Day, a Bike to School Day Poster Contest, Bike Mobile repair events, Bike Rodeos and Bike Safety Assemblies.



In May 2016, the Police Departments of Rio Vista and Suisun City began work for the third round of the SR2S Enforcement Grant. The Rio Vista Police Department will continue their engagement through education and encouragement activities at city schools. They also continued direct traffic enforcement during school drop-off and pick-up hours. Suisun City Police Department hired a School Safety Traffic Officer dedicated to attending and supporting SR2S events and priorities within Suisun City schools.

The SR2S Program was allocated \$1.2M of OneBayArea Grant funding for six priority infrastructure projects previously identified in the 2013 SR2S Plan.

Rail-Volution Mobile Workshop

In November, the Annual Rail-Volution Conference, a gathering of transportation planners, community advocates, transit officials, consultants, and developers, was held in San Francisco.

The City of Suisun City was chosen to host a Mobile Workshop for conference attendees. This Mobile Workshop showcased Solano County's connectivity to Bay Area destinations by utilizing ferry service from San Francisco to Vallejo, and transit service on Soltrans to Suisun City, where participants were presented with an overview of the Suisun City Redevelopment project "From Blight to Delight." Following the presentation, the Mobile Workshop participants took a bicycle tour of the Grizzly Island Trail Safe Routes to School Project, medium density homes with pocket parks, historic Suisun City landmarks, and concluded with a walking tour showing the mixed use housing/retail space along the Suisun City Waterfront District. The workshop ended at the newly renovated Suisun City Train Depot, where participants boarded the Capital Corridor Train to return to San Francisco.

This opportunity gave participants a look into how Solano County's transit systems operate together to provide commute and driving alternatives for residents and visitors.



Transportation Funding in Solano County

The **Regional Traffic Impact Fee (RTIF) Program** surpassed the **\$3M milestone** of funds collected since its inception on February 2013. This program helps fund the Green Valley Overpass, Benicia Bus Hub and Jepson Parkway Projects.

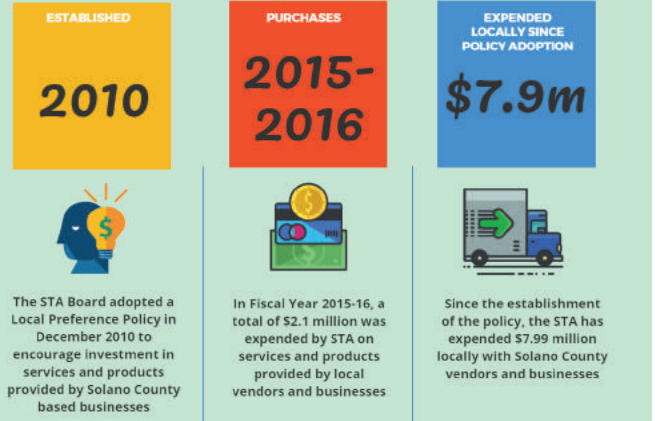
STA received a **Caltrans State Safety Grant for \$555,555** for the Countywide Systemic Safety Analysis Report Program (SSARP) to follow up last year's STA Countywide Safety Plan.

In the first quarter the California Transportation Commission (CTC) reduced the State Transportation Improvement Program funds and deprogrammed Solano County's Jepson Parkway project by \$9M. In the second quarter, the **CTC allocated \$33M in STIP funds for two segments of the Jepson Parkway Project.**

CA State Board of Equalization reduced the State Excise Tax Rate from 12 cents to 9.8 cents, further reducing the state transportation funds for local streets and roads, the STIP and the SHOPP.

Local Preference Policy

Solano Transportation Authority



Abandoned Vehicle Abatement

If you lined up (bumper to bumper) every abandoned car that was removed from Solano County's streets and roads for the last 10 years, they would stretch the full length of I-80 through Solano County . . . **TWICE!!**



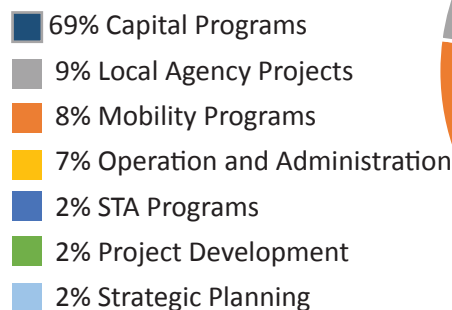
AVA Program

STA administers this CHP-funded program for the removal of abandoned vehicles in Solano County. The DMV collects a \$1 vehicle registration fee to offset the cost of vehicles abated.

5,781
vehicles abated in Solano County LAST YEAR (FY 2015-16).

34,453
vehicles abated in Solano County for the LAST 10 YEARS.

STA Budget FY 2016-2017 Revenues by Source \$22.6 Million



Solano County State & Federal Programming FY 2016-2017 \$65.8 Million

