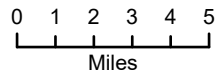


Solano County

Solano County Thresholds for Disadvantaged Communities

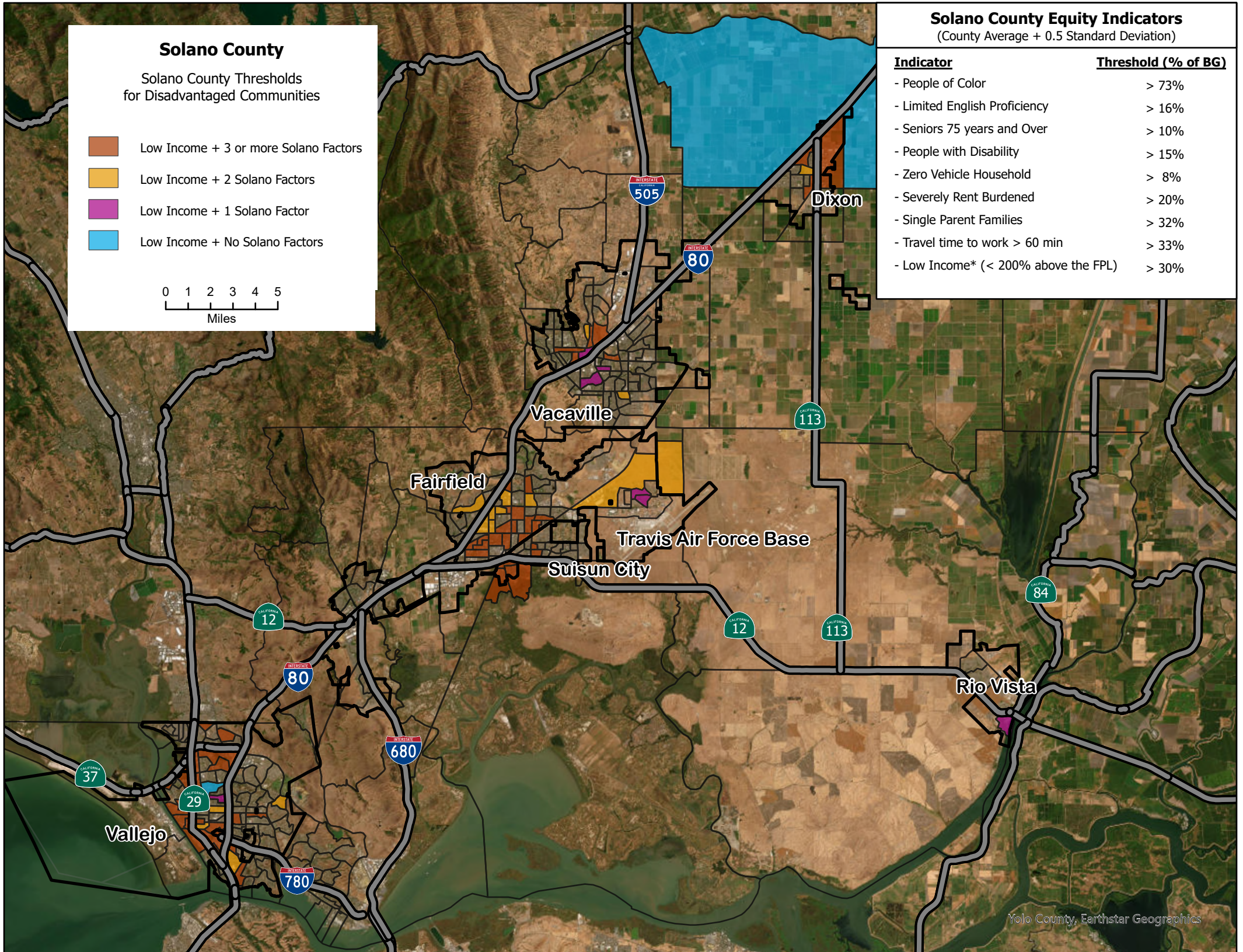
- Low Income + 3 or more Solano Factors
- Low Income + 2 Solano Factors
- Low Income + 1 Solano Factor
- Low Income + No Solano Factors

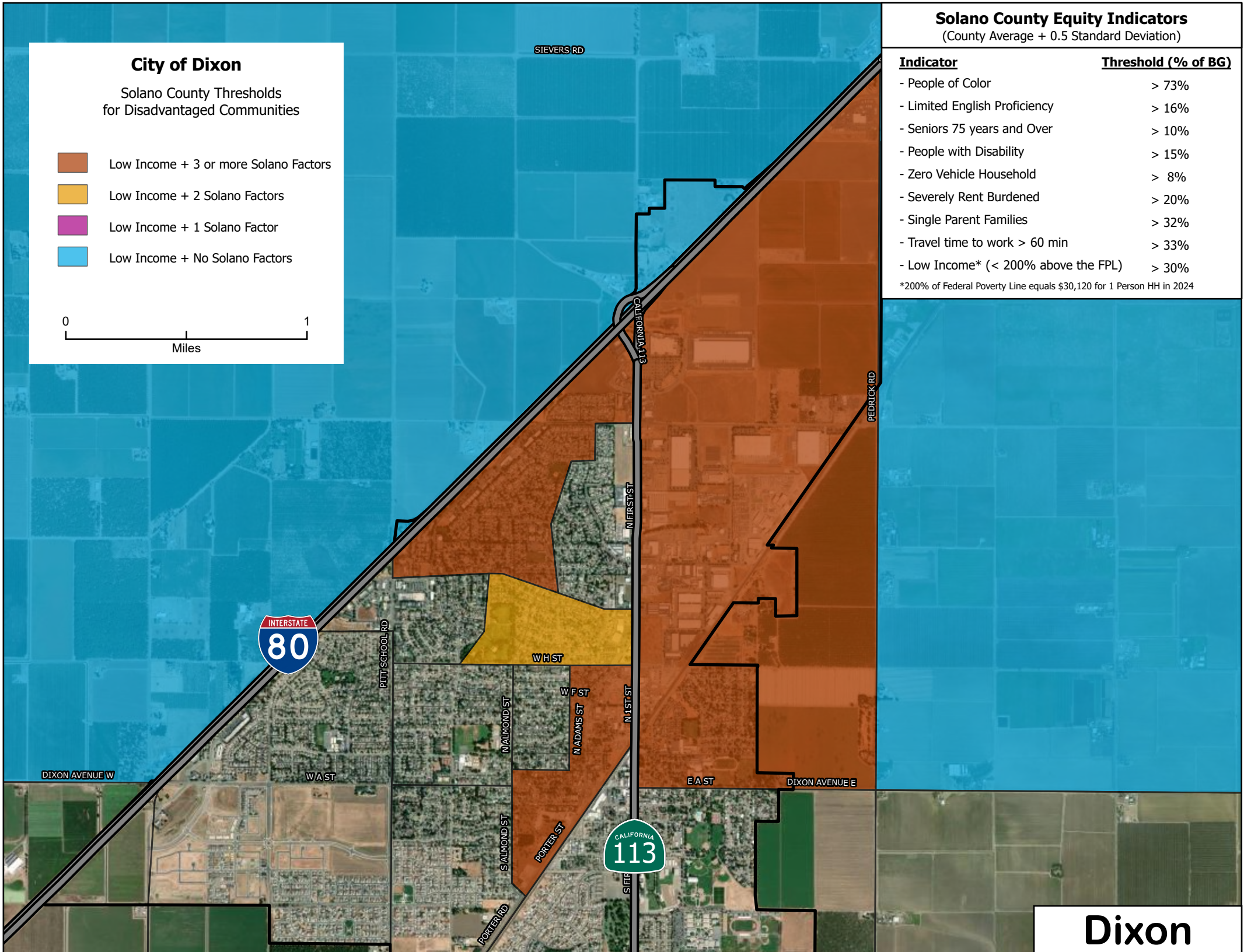


Solano County Equity Indicators

(County Average + 0.5 Standard Deviation)

Indicator	Threshold (% of BG)
- People of Color	> 73%
- Limited English Proficiency	> 16%
- Seniors 75 years and Over	> 10%
- People with Disability	> 15%
- Zero Vehicle Household	> 8%
- Severely Rent Burdened	> 20%
- Single Parent Families	> 32%
- Travel time to work > 60 min	> 33%
- Low Income* (< 200% above the FPL)	> 30%





City of Dixon

Solano County Thresholds for Disadvantaged Communities

- Low Income + 3 or more Solano Factors
- Low Income + 2 Solano Factors
- Low Income + 1 Solano Factor
- Low Income + No Solano Factors



Solano County Equity Indicators

(County Average + 0.5 Standard Deviation)

Indicator	Threshold (% of BG)
- People of Color	> 73%
- Limited English Proficiency	> 16%
- Seniors 75 years and Over	> 10%
- People with Disability	> 15%
- Zero Vehicle Household	> 8%
- Severely Rent Burdened	> 20%
- Single Parent Families	> 32%
- Travel time to work > 60 min	> 33%
- Low Income* (< 200% above the FPL)	> 30%

*200% of Federal Poverty Line equals \$30,120 for 1 Person HH in 2024

Dixon

BG = Block Groups (BGs) are statistical divisions of census tracts, are generally defined to contain between 600 and 3,000 people, and are used to present data and control block numbering. HH = Household

City of Fairfield

Solano County Thresholds for Disadvantaged Communities

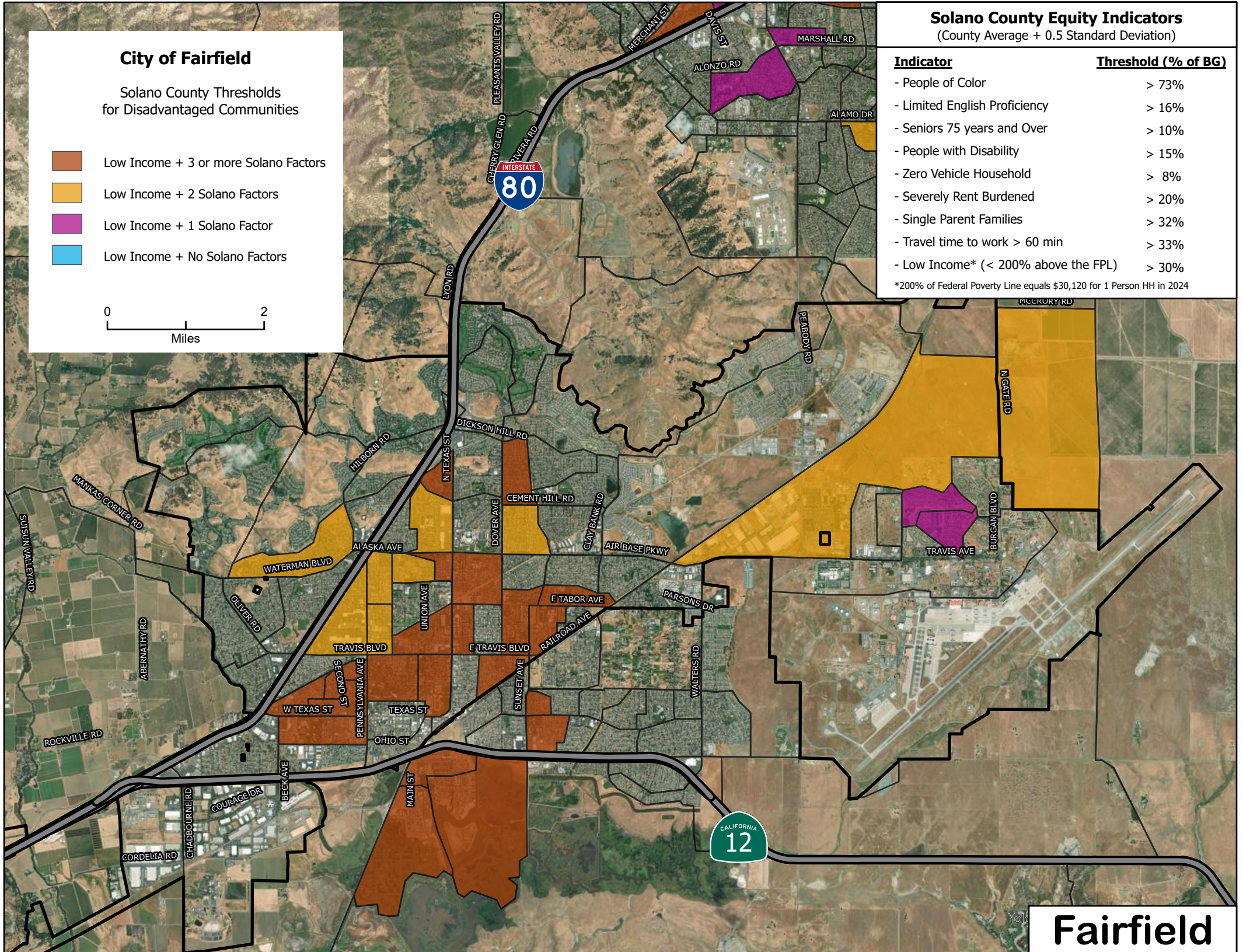
- Low Income + 3 or more Solano Factors
- Low Income + 2 Solano Factors
- Low Income + 1 Solano Factor
- Low Income + No Solano Factors



Solano County Equity Indicators (County Average + 0.5 Standard Deviation)

Indicator	Threshold (% of BG)
- People of Color	> 73%
- Limited English Proficiency	> 16%
- Seniors 75 years and Over	> 10%
- People with Disability	> 15%
- Zero Vehicle Household	> 8%
- Severely Rent Burdened	> 20%
- Single Parent Families	> 32%
- Travel time to work > 60 min	> 33%
- Low Income* (< 200% above the FPL)	> 30%

*200% of Federal Poverty Line equals \$30,120 for 1 Person HH in 2024



Fairfield

BG = Block Groups (BGs) are statistical divisions of census tracts, are generally defined to contain between 600 and 3,000 people, and are used to present data and control block numbering. HH = Household

City of Rio Vista

Solano County Thresholds for Disadvantaged Communities

- Low Income + 3 or more Solano Factors
- Low Income + 2 Solano Factors
- Low Income + 1 Solano Factor
- Low Income + No Solano Factors

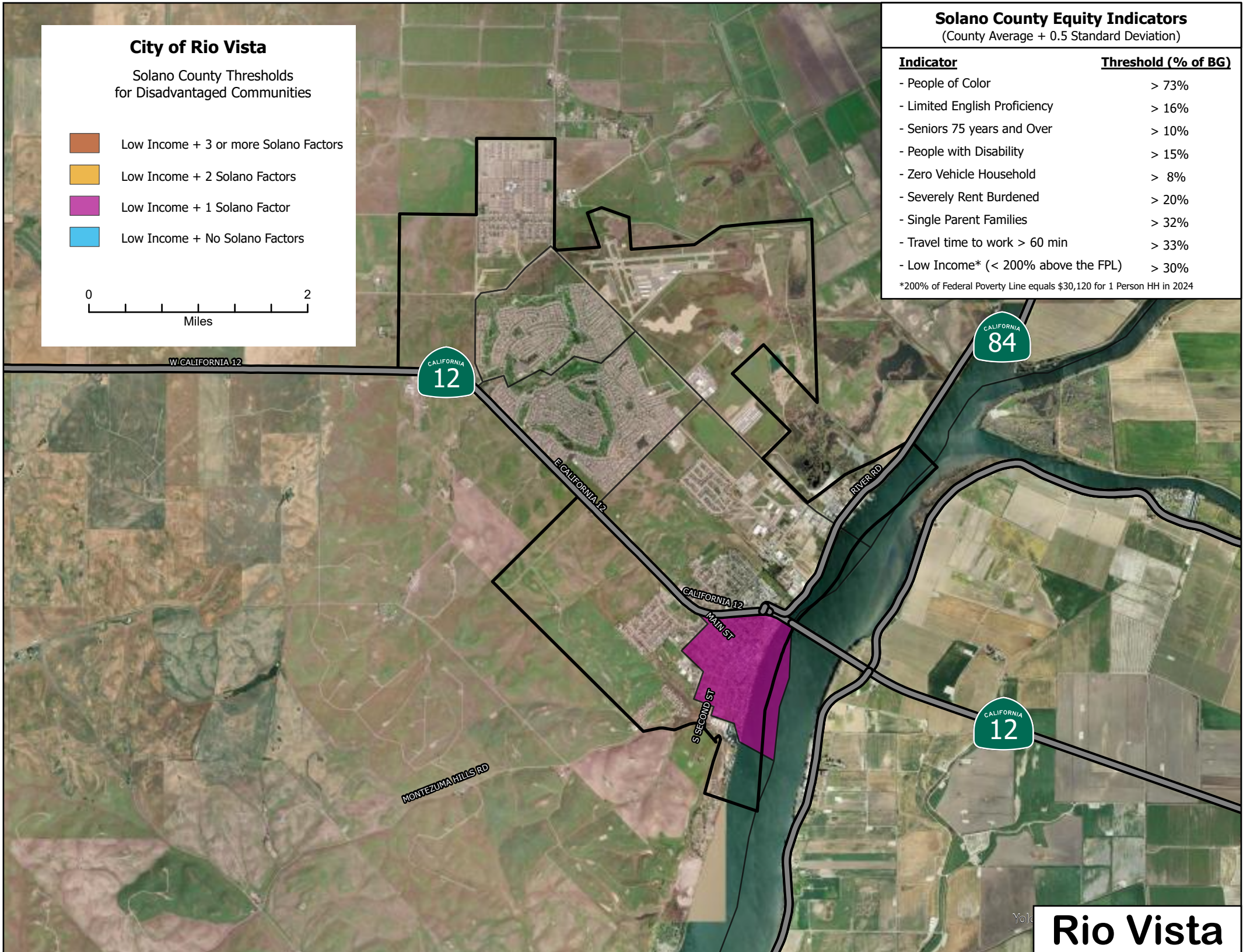


Solano County Equity Indicators

(County Average + 0.5 Standard Deviation)

Indicator	Threshold (% of BG)
- People of Color	> 73%
- Limited English Proficiency	> 16%
- Seniors 75 years and Over	> 10%
- People with Disability	> 15%
- Zero Vehicle Household	> 8%
- Severely Rent Burdened	> 20%
- Single Parent Families	> 32%
- Travel time to work > 60 min	> 33%
- Low Income* (< 200% above the FPL)	> 30%

*200% of Federal Poverty Line equals \$30,120 for 1 Person HH in 2024



Rio Vista

BG = Block Groups (BGs) are statistical divisions of census tracts, are generally defined to contain between 600 and 3,000 people, and are used to present data and control block numbering. HH = Household

Suisun City

Solano County Thresholds for Disadvantaged Communities

- Low Income + 3 or more Solano Factors
- Low Income + 2 Solano Factors
- Low Income + 1 Solano Factor
- Low Income + No Solano Factors

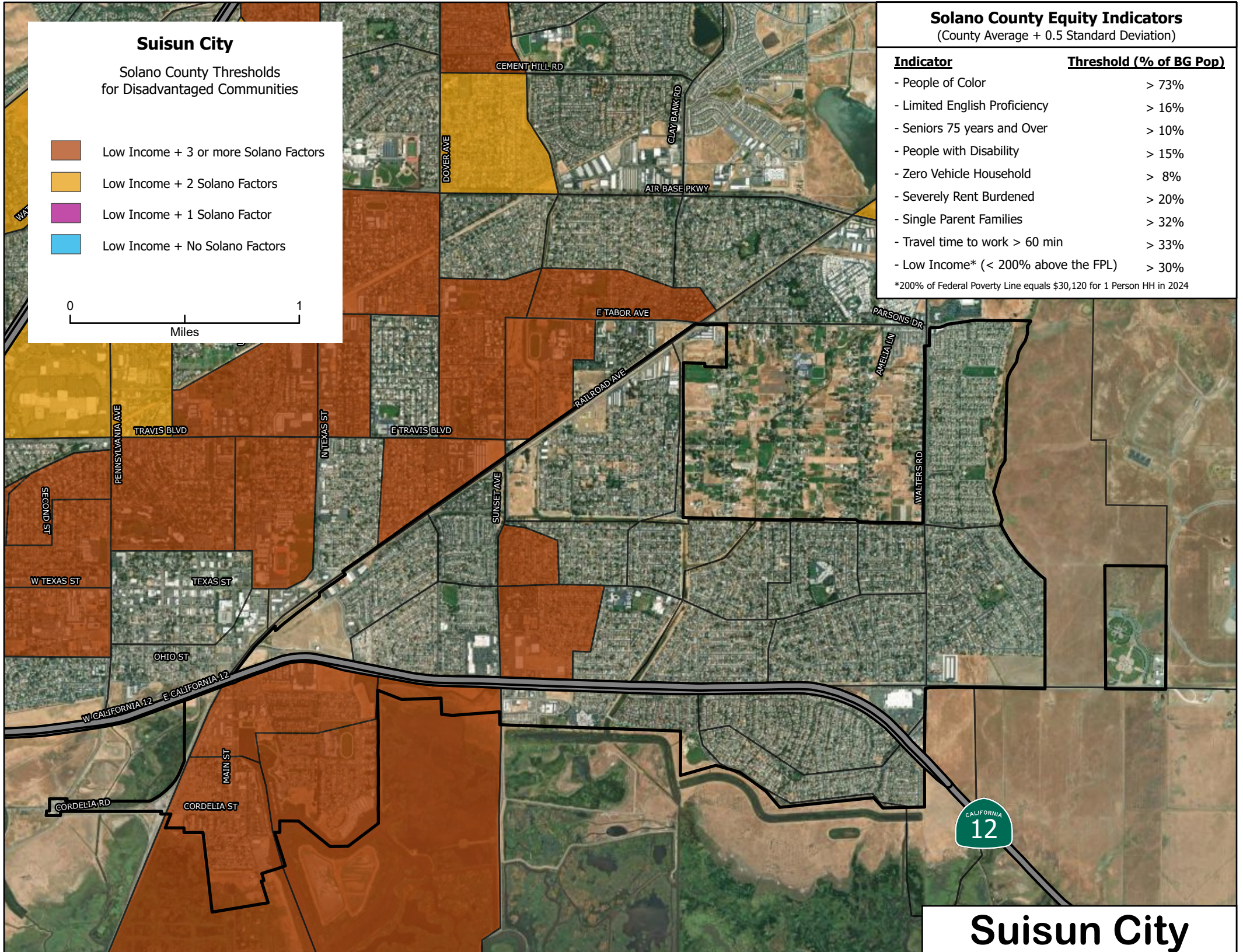


Solano County Equity Indicators

(County Average + 0.5 Standard Deviation)

Indicator	Threshold (% of BG Pop)
- People of Color	> 73%
- Limited English Proficiency	> 16%
- Seniors 75 years and Over	> 10%
- People with Disability	> 15%
- Zero Vehicle Household	> 8%
- Severely Rent Burdened	> 20%
- Single Parent Families	> 32%
- Travel time to work > 60 min	> 33%
- Low Income* (< 200% above the FPL)	> 30%

*200% of Federal Poverty Line equals \$30,120 for 1 Person HH in 2024



BG = Block Groups (BGs) are statistical divisions of census tracts, are generally defined to contain between 600 and 3,000 people, and are used to present data and control block numbering. HH = Household

City of Vacaville

Solano County Thresholds for Disadvantaged Communities

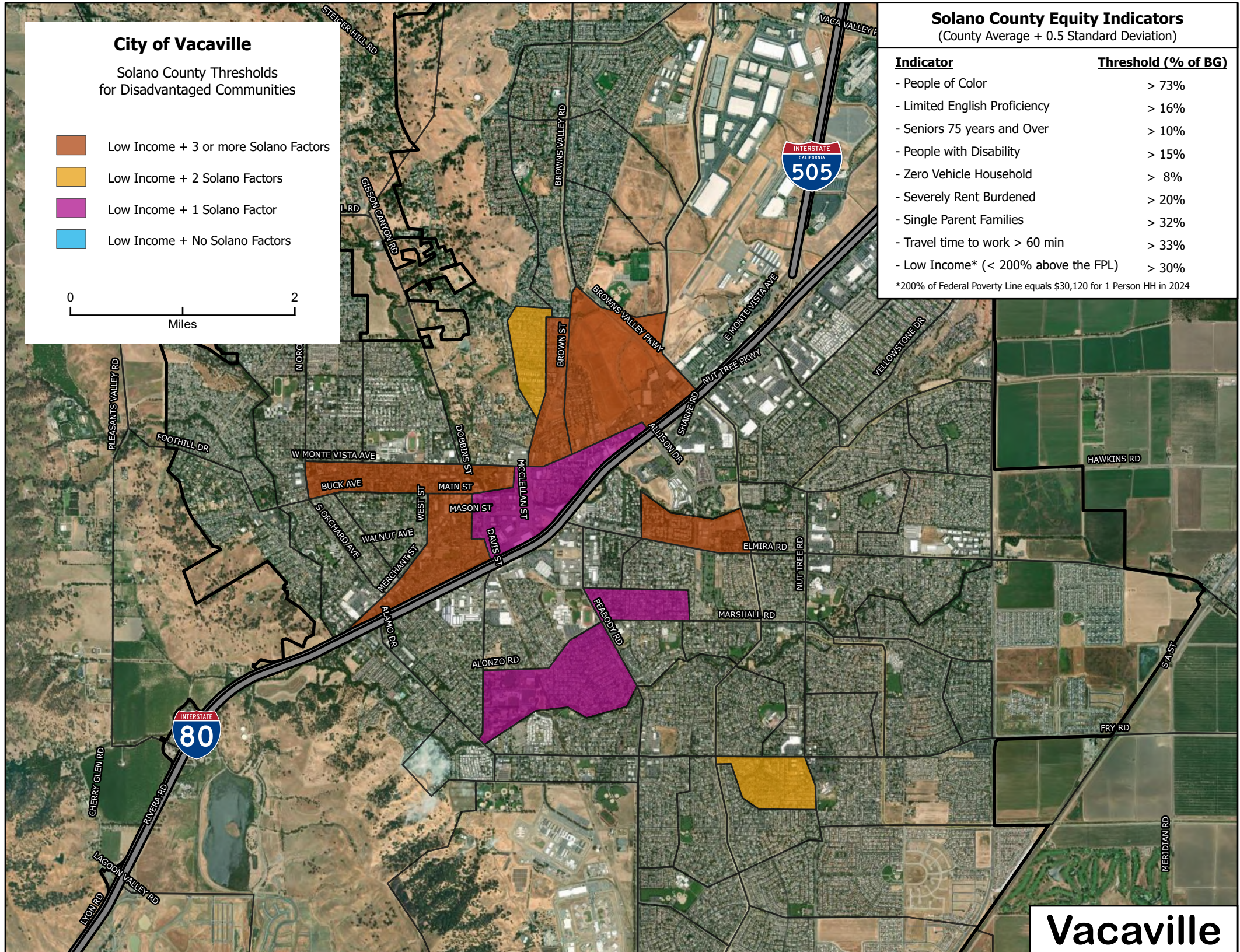
- Low Income + 3 or more Solano Factors
- Low Income + 2 Solano Factors
- Low Income + 1 Solano Factor
- Low Income + No Solano Factors



Solano County Equity Indicators (County Average + 0.5 Standard Deviation)

Indicator	Threshold (% of BG)
- People of Color	> 73%
- Limited English Proficiency	> 16%
- Seniors 75 years and Over	> 10%
- People with Disability	> 15%
- Zero Vehicle Household	> 8%
- Severely Rent Burdened	> 20%
- Single Parent Families	> 32%
- Travel time to work > 60 min	> 33%
- Low Income* (< 200% above the FPL)	> 30%

*200% of Federal Poverty Line equals \$30,120 for 1 Person HH in 2024



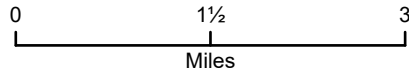
Vacaville

BG = Block Groups (BGs) are statistical divisions of census tracts, are generally defined to contain between 600 and 3,000 people, and are used to present data and control block numbering. HH = Household

City of Vallejo

Solano County Thresholds for Disadvantaged Communities

- Low Income + 3 or more Solano Factors
- Low Income + 2 Solano Factors
- Low Income + 1 Solano Factor
- Low Income + No Solano Factors

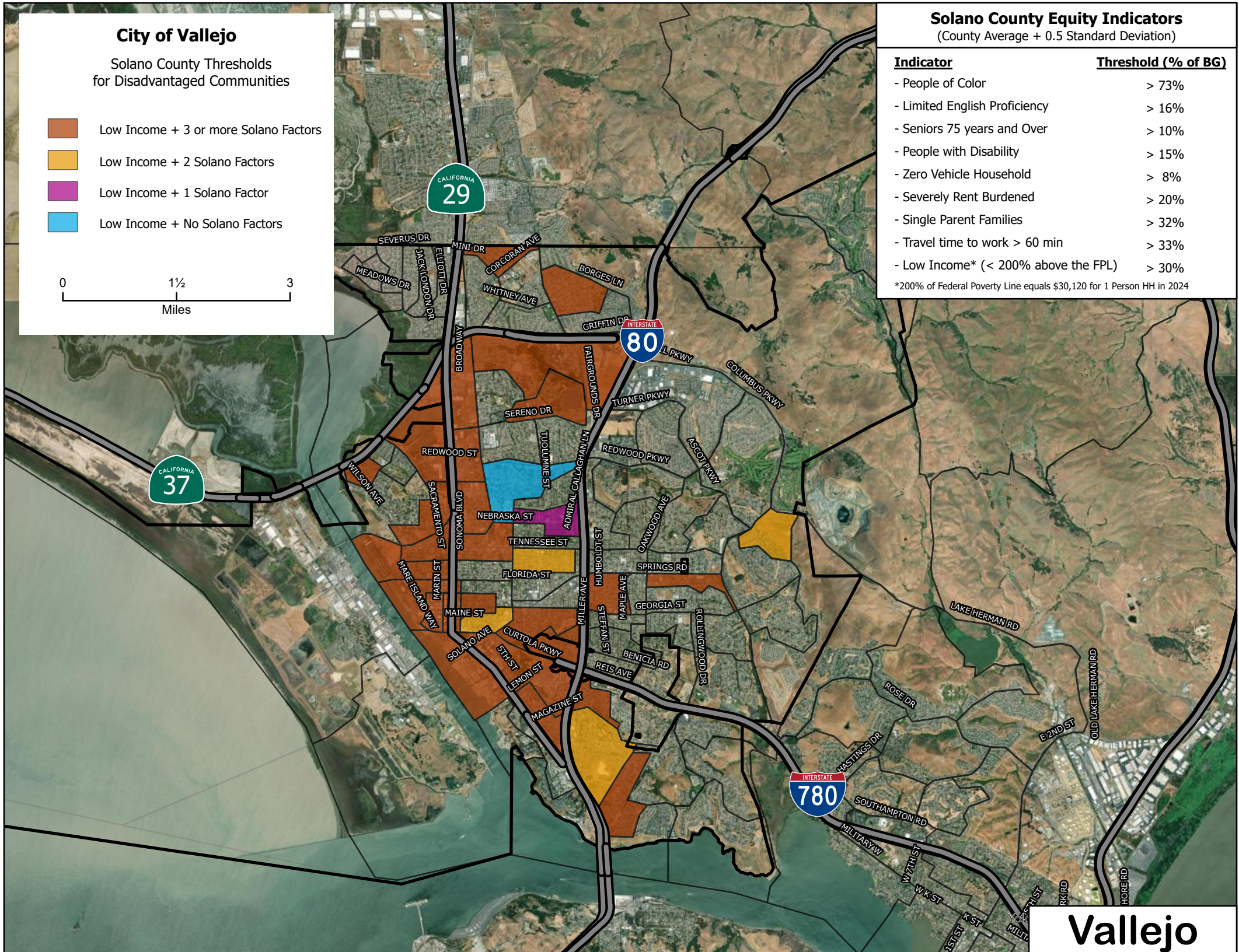


Solano County Equity Indicators

(County Average + 0.5 Standard Deviation)

Indicator	Threshold (% of BG)
- People of Color	> 73%
- Limited English Proficiency	> 16%
- Seniors 75 years and Over	> 10%
- People with Disability	> 15%
- Zero Vehicle Household	> 8%
- Severely Rent Burdened	> 20%
- Single Parent Families	> 32%
- Travel time to work > 60 min	> 33%
- Low Income* (< 200% above the FPL)	> 30%

*200% of Federal Poverty Line equals \$30,120 for 1 Person HH in 2024



Vallejo

BG = Block Groups (BGs) are statistical divisions of census tracts, are generally defined to contain between 600 and 3,000 people, and are used to present data and control block numbering. HH = Household