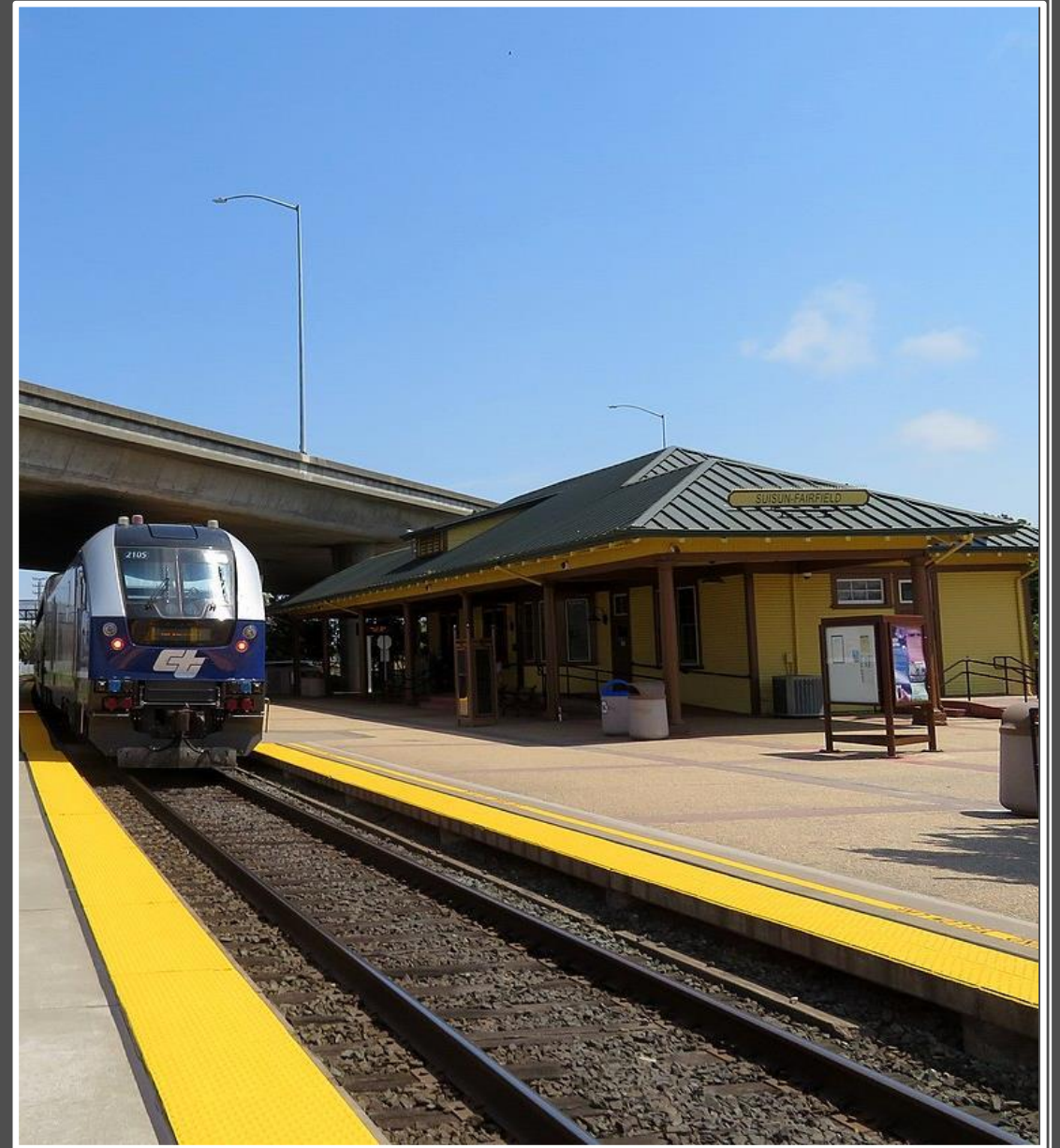
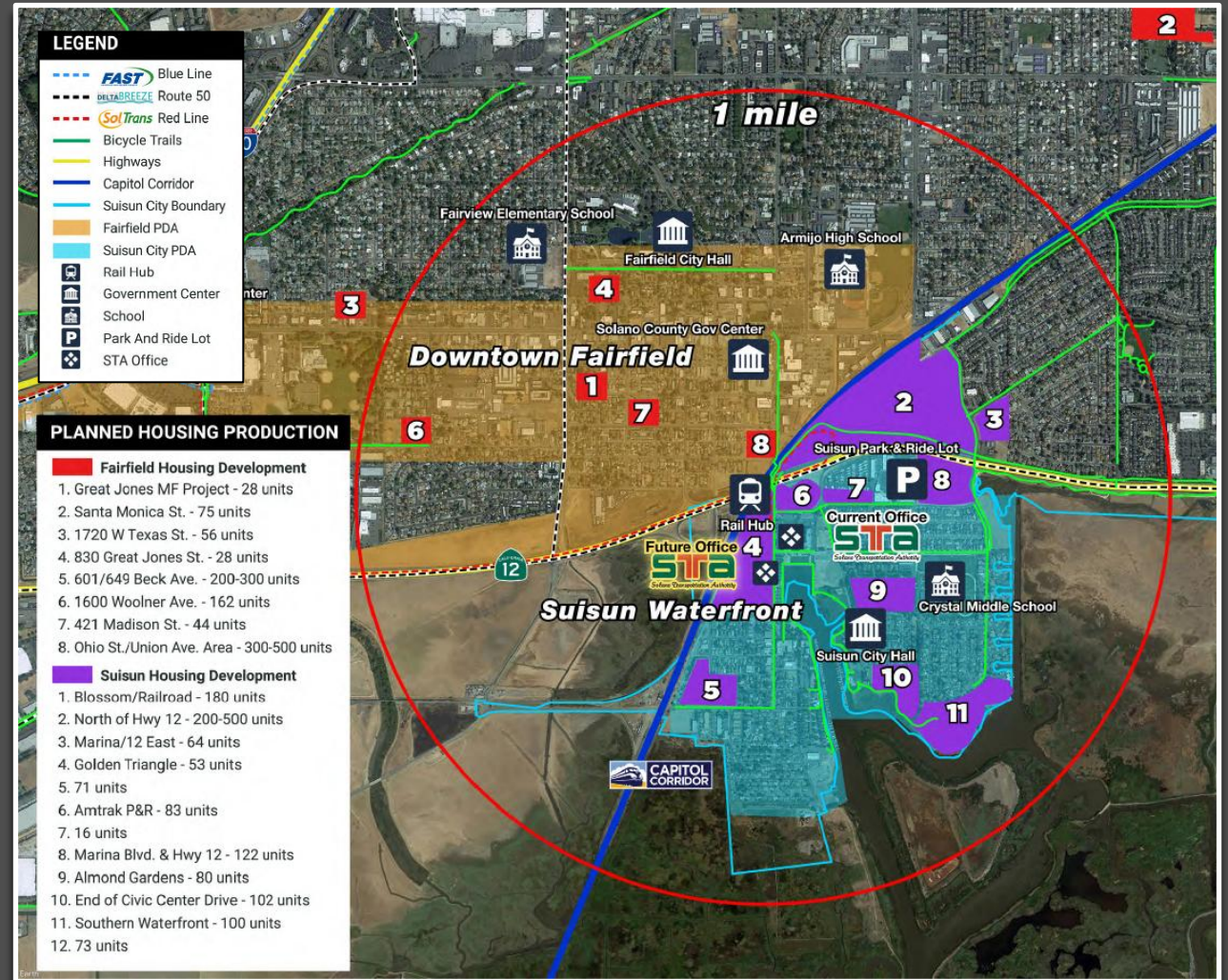


**SOLANO RAIL HUB  
PEDESTRIAN CROSSING  
PROJECT APPROVAL &  
ENVIRONMENTAL DOCUMENT  
PRE-PROPOSAL MEETING  
JULY 1, 2025**



# AGENDA

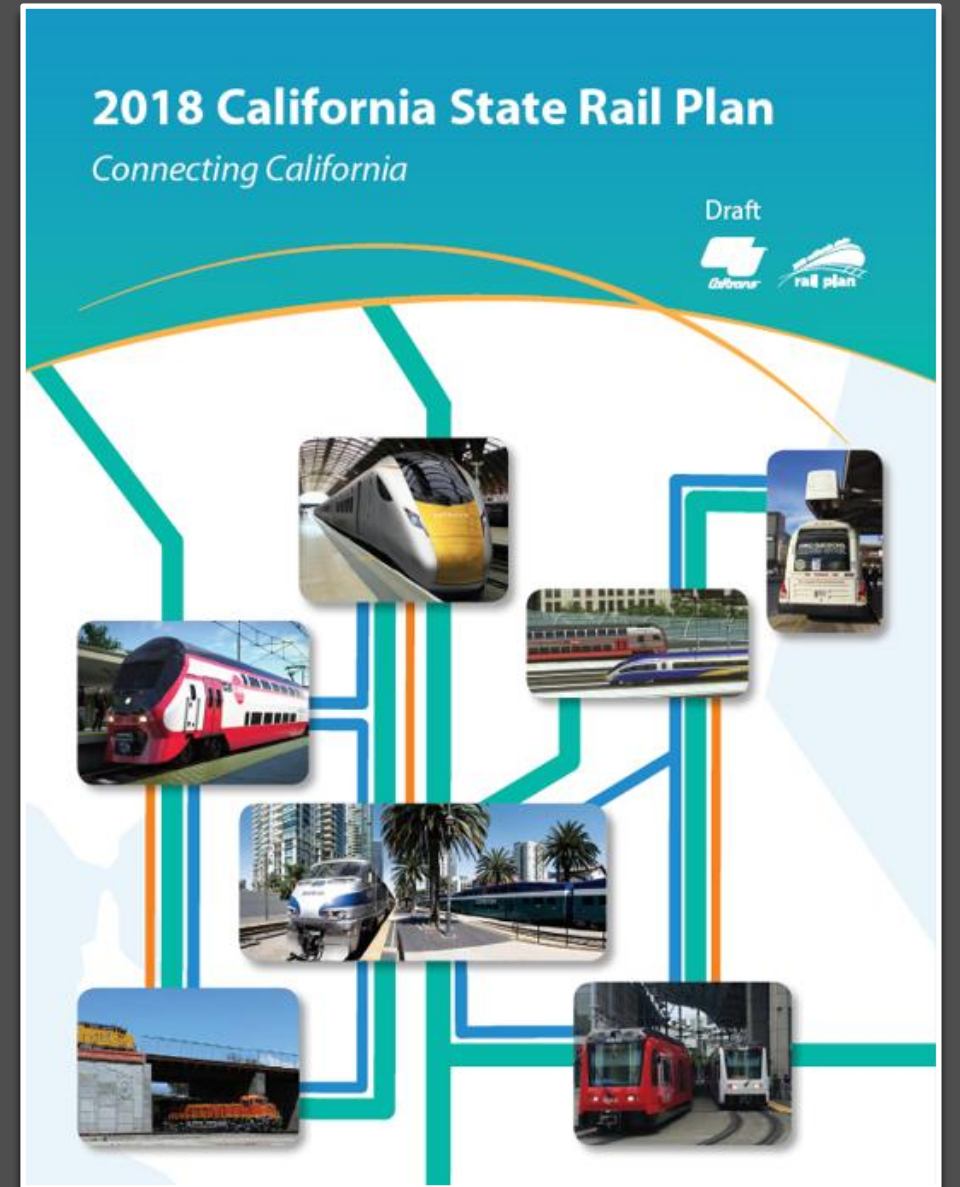
- Project Team Introduction
- Solano Rail Hub Background
- Existing Pedestrian Crossing
- RFP Tasks
- RFP Schedule
- Questions





# SOLANO RAIL HUB

- 2018 California State Rail Plan identified as a “Solano County Hub”
- Identified in the *2021 SMART and SolanoExpress Station Feasibility Study* and designated by the STA Board in 2021 as the Solano Rail Hub
- Supports multi-modal transit operations with Amtrak service operated by CCJPA, as well as local and regional bus services
- Supports the Cities of Fairfield’s and Suisun City’s Priority Development Areas



# PEDESTRIAN CROSSING

- Key route for students attending Armijo High School in City of Fairfield and Crystal Middle School in Suisun City, as well as transit passengers going to the Solano Rail Hub
- Problem: existing pedestrian crossing ramp is non-ADA compliant and encourages pedestrians to bypass the overcrossing and cross the active tracks at-grade in an unsafe manner
- Goal: establish a seamless, safe, attractive, and accessible connection for all ages and abilities between downtown of City of Fairfield and Suisun City



## RFP TASKS

- Task 1: Project Management
- Task 2: Selection of Preferred Alternative
- Task 3: Surveying and Mapping
- Task 4: Stakeholder and Public Outreach
- Task 5: Technical Reports

## SUPPLEMENTAL/OPTIONAL TASKS

- Final Design
- Right-of-Way Plat and Legal Descriptions
- Grant Preparation
- Design Support during Construction



### **REQUEST FOR PROPOSALS (RFP # 2025-06)**

For the

**Preparation of Project Approval and Environmental Documentation (PA&ED), as well as Plans, Specifications, and Estimate (PS&E) for the Solano Rail Hub Project Pedestrian Crossing and Station Area Improvements Project**

In  
Solano County

# RFP SCHEDULE

- June 13: RFP released
- July 1: Pre-proposal meeting
- July 7: Question(s) submission deadline
- July 14: Posting of response to questions received
- August 1: Proposal due date by 4:00 PM
- August 18 (week): Panel interview
- August 25 (week): Consultant selection
- September 1: Project start



## **REQUEST FOR PROPOSALS (RFP # 2025-06)**

For the

**Preparation of Project Approval and Environmental Documentation (PA&ED), as well as Plans, Specifications, and Estimate (PS&E) for the Solano Rail Hub Project Pedestrian Crossing and Station Area Improvements Project**

In  
Solano County



# CONTACT INFORMATION

Jasper Alve

STA Project Manager

[jalve@sta.ca.gov](mailto:jalve@sta.ca.gov)

(707) 399-3204

***THANK YOU!***

