



SOLANO TRANSPORTATION AUTHORITY

Member Agencies:

Benicia ♦ Dixon ♦ Fairfield ♦ Rio Vista ♦ Suisun City ♦ Vacaville ♦ Vallejo ♦ Solano County

Solano Transportation Authority

423 Main Street, Suisun City, CA 94585-2473 ♦ Phone (707) 424-6075 / Fax (707) 424-6074
Email: info@sta.ca.gov ♦ Website: sta.ca.gov

ARTERIALS, HIGHWAYS, AND FREEWAYS COMMITTEE (AHFC)

4:00-5:30 p.m., Wednesday, March 12, 2025

STA Office – Board Room

423 Main Street, Suisun City, CA

The AHFC conducts their meetings **in person**.

The Zoom link below is available only for participants joining the meeting remotely.

Join Zoom Meeting

<https://us02web.zoom.us/j/81857310157?pwd=t14yyUarDqLkEawsIZVvbnAIlNo7yJ.1>

Meeting ID: 818 5731 0157

Passcode: 795385

MEETING AGENDA

<u>ITEM</u>	<u>STAFF PERSON</u>
1. CALL TO ORDER/INTRODUCTIONS (4:00 – 4:05 p.m.)	John Carli, Chair
2. APPROVAL OF AGENDA (4:05 – 4:10 p.m.)	John Carli, Chair
3. OPPORTUNITY FOR PUBLIC COMMENT (4:10 – 4:15 p.m.)	John Carli, Chair
4. STA PRESENTATIONS	
A. Comprehensive Transportation Plan Schedule and Meeting Objectives (4:15– 4:20 p.m.)	Robert Guerrero, STA
5. CONSENT CALENDAR	
A. Approval of the Arterials, Highways, and Freeways Committee Meeting Minutes of December 13, 2023 – Pg. 5 <u>Recommendation:</u> Approve AHFC Meeting Minutes of December 13, 2023	Dulce Jimenez, STA

2025 Arterials, Highways, and Freeways Committee (AHFC) Members

<u>Terry Scott</u> City of Benicia	<u>Steve Bird</u> City of Dixon	<u>Catherine Moy</u> City of Fairfield	<u>Edwin Okamura</u> City of Rio Vista	<u>Alma Hernandez</u> City of Suisun City	<u>John Carli (Chair)</u> City of Vacaville	<u>Andrea Sorce</u> City of Vallejo	<u>Mitch Mashburn</u> County of Solano
<u>Captain Mike Lehman</u> California Highway Patrol (CHP)	<u>Cameron Oakes</u> California Department of Transportation (Caltrans)	<u>Lisa Klein</u> Metropolitan Transportation Commission (MTC)	<u>Jacob Francisco</u> Bicycle Advisory Committee (BAC) Representative	<u>Teri Booth</u> Pedestrian Advisory Committee (PAC) Representative	<u>Matt Tuggle</u> Technical Advisory Committee (TAC) Representative		

The Arterials, Highways, and Freeways Committee meeting packet is also available on STA’s website:

www.sta.ca.gov

6. ACTION NON-FINANCIAL

A. Arterials, Highways, and Freeways Element Draft Goals and Objectives

(4:20 – 4:35 p.m.) - **Pg. 9**

Recommendation:

Forward a recommendation to the STA Board to approve the Arterials, Highways, and Freeways Element Draft Goals and Objectives.

Alice Chen, DKS
Leslie Gould, STA

7. INFORMATIONAL – DISCUSSION ITEMS

A. Completed Arterials, Highways, and Freeways Projects from the 2020 Comprehensive Transportation Plan (4:35 – 4:40 p.m.)

Leslie Gould, STA

B. Member Agency Draft Priority Arterials, Highways, and Freeways Projects (4:40 – 5:00 p.m.)

Leslie Gould, STA
Member Agencies

C. Comprehensive Transportation Plan Update - Draft Project Prioritization Criteria (5:00 – 5:10 p.m.)

Kathrina Gregana, STA

D. Routes of Regional Significance (RORS) (5:10 – 5:15 p.m.) - Pg. 19

Alice Chen, DKS
Leslie Gould, STA

E. Public Outreach Schedule for the Comprehensive Transportation Plan Update Effort (5:15 – 5:20 p.m.)

Dulce Jimenez, STA

8. INFORMATIONAL ITEMS – NO DISCUSSION

A. None.

9. ROUND TABLE DISCUSSION

(5:20 – 5:30 p.m.)

AHFC Members

10. FUTURE AGENDA TOPICS

- Routes of Regional Significance (RORS) Update
- Future Project Initiation Document (PIDS) – Dixon/Mare Island
- Corridor Studies/Plans
- 2026 State Highway Operation and Protection Program (SHOPP) Funding Priorities
- Regional Transportation Impact Fee (RTIF)

11. ADJOURNMENT/NEXT MEETING

The next Active Transportation Committee meeting is scheduled to meet at **4:00 p.m., Wednesday, June 11, 2025**, at the STA Board Room, 423 Main Street in Suisun City.

Future Meeting Dates

4:00 pm, Wednesday, June 11, 2025

4:00 pm, Wednesday, September 10, 2025

A		F	
AADT	Average Annual Daily Traffic	FAST	Fairfield and Suisun Transit
ABAG	Association of Bay Area Governments	FAST Act	Fixing America’s Surface Transportation Act
ACTC	Alameda County Transportation Commission	FASTER	Freedom. Affordability. Speed. Transparency. Equity. Reliability.
ADA	American Disabilities Act	FASTLANE	Fostering Advancements in Shipping and Transportation for the Long-term Achievement of National Efficiencies
ADT	Average Daily Traffic	FEIR	Final Environmental Impact Report
APDE	Advanced Project Development Element (STIP)	FHWA	Federal Highway Administration
AQMD	Air Quality Management District	FPI	Freeway Performance Initiative
ARRA	American Recovery and Reinvestment Act	FTA	Federal Transit Administration
ATP	Active Transportation Program	G	
ATWG	Active Transportation Working Group	GARVEE	Grant Anticipating Revenue Vehicle
AVA	Abandoned Vehicle Abatement	GHG	Greenhouse Gas
B		GIS	Geographic Information System
BAAQMD	Bay Area Air Quality Management District	H	
BAC	Bicycle Advisory Committee	HIP	Housing Incentive Program
BACTA	Bay Area Counties Transportation Agencies	HOT	High Occupancy Toll
BAIFA	Bay Area Infrastructure Financing Authority	HOV	High Occupancy Vehicle
BARC	Bay Area Regional Collaborative	HPMS	Highway Performance Monitoring System
BART	Bay Area Rapid Transit	HSIP	Highway Safety Improvement Plan
BATA	Bay Area Toll Authority	I	
BCDC	Bay Conservation & Development Commission	INFRA	Infrastructure for Rebuilding America
BUILD	Better Utilizing Investments to Leverage Development	ISTEA	Intermodal Surface Transportation Efficiency Act
C		ITIP	Interregional Transportation Improvement Program
CAF	Clean Air Funds	ITS	Intelligent Transportation System
CalSTA	California State Transportation Agency	J	
CALTRANS	California Department of Transportation	JARC	Jobs Access Reverse Commute Program
CAPTI	California State Transportation: Climate Action Plan for Transportation	JPA	Joint Powers Agreement
CARB	California Air Resources Board	L	
CCAG	City-County Association of Governments (San Mateo)	LATIP	Local Area Transportation Improvement Program
CCCC (4’Cs)	City County Coordinating Council	LCTOP	Low Carbon Transit Operations Program (LCTOP)
CCCTA (3CTA)	Central Contra Costa Transit Authority	LEV	Low Emission Vehicle
CCJPA	Capitol Corridor Joint Powers Authority	LIFT	Low Income Flexible Transportation Program
CCTA	Contra Costa Transportation Authority	LOS	Level of Service
CEC	California Energy Commission	LS&R	Local Streets & Roads
CEQA	California Environmental Quality Act	LTR	Local Transportation Funds
CHP	California Highway Patrol	M	
CIP	Capital Improvement Program	MAP-21	Moving Ahead for Progress in the 21 st Century
CMA	Congestion Management Agency	MAZ	Micro Analysis Zone
CMIA	Corridor Mobility Improvement Account	MIS	Major Investment Study
CMAQ	Congestion Mitigation & Air Quality Program	MLIP	Managed Lanes Implementation Plan
CMGC	Construction Manager/General Contractor	MOU	Memorandum of Understanding
CMP	Congestion Management Plan	MPO	Metropolitan Planning Organization
CNG	Compressed Natural Gas	MTAC	Model Technical Advisory Committee
CPI	Consumer Price Index	MTC	Metropolitan Transportation Commission
CRRSAA	Coronavirus Response and Relief Supplemental Appropriation Act of 2021	MTS	Metropolitan Transportation System
D		N	
CTA	California Transit Agency	NCTPA	Napa County Transportation & Planning Agency
CTC	California Transportation Commission	NEPA	National Environmental Policy Act
CTP	Comprehensive Transportation Plan	NHS	National Highway System
CTSA	Consolidated Transportation Services Agency	NOP	Notice of Preparation
E		NVTA	Napa Valley Transportation Authority
DBE	Disadvantaged Business Enterprise	O	
DOT	Department of Transportation	OBAG	One Bay Area Grant
E		OPR	Office of Planning and Research
ECMAQ	Eastern Solano Congestion Mitigation Air Quality Program	OTS	Office of Traffic Safety
EIR	Environmental Impact Report	P	
EIS	Environmental Impact Statement	PAC	Pedestrian Advisory Committee
EPA	Environmental Protection Agency	PCA	Priority Conservation Area
EV	Electric Vehicle	PCC	Paratransit Coordinating Council
		PCI	Pavement Condition Index

PCRP	Planning & Congestion Relief Program	S RTP	Short Range Transit Plan
PDS	Project Development Support	SSARP	Systemic Safety Analysis Report Program
PDA	Priority Development Area	SSPWD TAC	Solano Seniors & People with Disabilities Transportation Advisory Committee
PDT	Project Delivery Team	STAF	State Transit Assistance Fund
PDWG	Project Delivery Working Group	STA	Solano Transportation Authority
PMP	Pavement Management Program	STBG	Federal Surface Transportation Block Grant Program
PMS	Pavement Management System	STIA	Solano Transportation Improvement Authority
PNR	Park & Ride	STIP	State Transportation Improvement Program
POP	Program of Projects	STP	Federal Surface Transportation Program
PPA	Priority Production Area	SubHIP	Suburban Housing Incentive Pool
PPM	Planning, Programming & Monitoring	T	
PPP (P3)	Public Private Partnership	TAC	Technical Advisory Committee
PS&E	Plans, Specifications & Estimate	TAM	Transportation Authority of Marin
PSR	Project Study Report	TANF	Temporary Assistance for Needy Families
PTA	Public Transportation Account	TAZ	Transportation Analysis Zone
PTAC	Partnership Technical Advisory Committee (MTC)	TCEP	Trade Corridor Enhancement Program
R		TCI	Transportation Capital Improvement
RABA	Revenue Alignment Budget Authority	TCIF	Trade Corridor Improvement Fund
REPEG	Regional Environmental Public Education Group	TCM	Transportation Control Measure
RFP	Request for Proposal	TCRP	Transportation Congestion Relief Program
RFQ	Request for Qualification	TDA	Transportation Development Act
RM 1/2/3	Regional Measure 1/2/3 (Bridge Toll)	TDM	Transportation Demand Management
RMRP	Road Maintenance and Rehabilitation Program	TE	Transportation Enhancement
RORS	Routes of Regional Significance	TEA	Transportation Enhancement Activity
RPC	Regional Pedestrian Committee	TEA-21	Transportation Efficiency Act for the 21 st Century
RRP	Regional Rideshare Program	TFCA	Transportation Funds for Clean Air
RTEP	Regional Transit Expansion Policy	TIF	Transportation Investment Fund
RTIF	Regional Transportation Impact Fee	TIGER	Transportation Investment Generating Economic Recovery
RTP	Regional Transportation Plan	TIP	Transportation Improvement Program
RTP/SCS	Regional Transportation Plan/Sustainable Communities Strategies	TIRCP	Transit and Intercity Rail Capital Program
RTIP	Regional Transportation Improvement Program	TLC	Transportation for Livable Communities
RTMC	Regional Transit Marketing Committee	TMA	Transportation Management Association
RTPA	Regional Transportation Planning Agency	TMP	Transportation Management Plan
S		TMS	Transportation Management System
SACOG	Sacramento Area Council of Governments	TMTAC	Transportation Management Technical Advisory Committee
SAFETEA-LU	Safe, Accountable, Flexible, Efficient Transportation Equality Act-a Legacy for Users	TNC	Transportation Network Company
SATP	Solano Active Transportation Plan	TOD	Transportation Operations Systems
SCS	Sustainable Community Strategy	TOD	Transit Oriented Development
SCTA	Sonoma County Transportation Authority	TOS	Traffic Operation System
SFCTA	San Francisco County Transportation Authority	T-Plus	Transportation Planning and Land Use Solutions
SGC	Strategic Growth Council	TRAC	Trails Advisory Committee
SJCOG	San Joaquin Council of Governments	TSMO	Transportation System Management and Operations
SHOPP	State Highway Operations & Protection Program	U, V, W	
SMAQMD	Sacramento Metropolitan Air Quality Management District	UZA	Urbanized Area
SMART	Sonoma Marin Area Rapid Transit	USDOT	United States Department of Transportation
SMART	Safety, Mobility and Automated Real-time	VHD	Vehicle Hours of Delay
SMCCAG	San Mateo City-County Association of Governments	VMT	Vehicle Miles Traveled
SNABM	Solano-Napa Activity-Based Model	VTA	Valley Transportation Authority (Santa Clara)
SNCI	Solano Napa Commuter Information	W2W	Welfare to Work
SoHip	Solano Highway Partnership	WCCCTAC	West Contra Costa County Transportation Advisory Committee
SoHIP	Solano Housing Improvement Program	WETA	Water Emergency Transportation Authority
SoTrans	Solano County Transit	Y, Z	
SOV	Single Occupant Vehicle	YCTD	Yolo County Transit District
SPOT	Solano Projects Online Tracking	YSAQMD	Yolo/Solano Air Quality Management District
SP&R	State Planning & Research	ZEV	Zero Emission Vehicle
SPUR	San Francisco Bay Area Planning and Urban Research		
SR	State Route		
SR2S	Safe Routes to School		
SR2T	Safe Routes to Transit		



ARTERIALS, HIGHWAYS, AND FREEWAYS COMMITTEE
Minutes for Meeting of December 13, 2023

1. CALL TO ORDER

Chair Carli called the regular meeting to order at 4:00 p.m.

COMMITTEE MEMBERS PRESENT:

(Listed in Alphabetical Order by Last Name)

Steve Bird	Mayor, City of Dixon
John Carli, Chair	Mayor, City of Vacaville
Ron Kott	Mayor, City of Rio Vista
Mitch Mashburn	Board of Supervisor, County of Solano
Princess Washington (Zoom)	Mayor pro Tem, City of Suisun City

COMMITTEE MEMBERS ABSENT:

Peter Bregenzer	Councilmember, City of Vallejo
Cat Moy	Mayor, City of Fairfield
Steve Young	Mayor, City of Benicia

STAFF AND OTHERS PRESENT:

Dave Belef	BAC Representative, City of Vallejo
Teri Booth (Zoom)	PAC Representative, City of Vallejo
Nick Burton	STA
Arthur Chen (Zoom)	TJKM
Leslie Gould	STA
Dennis Elliott	BAC Member, City of Rio Vista
Robert Guerrero	STA
Kathrina Gregana	STA
Joseph Green-Heffern	PAC Representative, City of Fairfield
Daryl Halls	STA
Cpt Mike Lehman (Zoom)	California Highway Patrol Representative
Johanna Masiclat	STA
John McKenzie (Zoom)	Caltrans
Sean Person	STA
Josh Pilachowski (Zoom)	DKS, Project Consultant
Matt Tuggle	TAC Representative, County of Solano
Erin Vaca (Zoom)	DKS

2. APPROVAL OF AGENDA

By consensus, the Arterials, Highways and Freeways Committee approved the agenda.

3. OPPORTUNITY FOR PUBLIC COMMENT

None.

4. CONSENT CALENDAR

A. Minutes of the AHF Committee of June 14, 2023

5. INFORMATIONAL – DISCUSSION ITEMS

A. Comprehensive Transportation Plan Schedule and Meeting Objectives

Presented by Robert Guerrero, STA.

Summary of Committee Member Comments:

None.

B. AHF Element Draft Goals and Objectives

1. Group Discussion

Presented by Erin Vaca, DKS.

Summary of Committee Member Comments:

Mobility Goal:

Committee members requested clarification on how equity will be factored in the distribution of funds for projects. In response, STA staff discussed that as part of the greater Comprehensive Transportation Plan (CTP) Update effort, a Solano Equity Indicator will be developed to identify additional equity priority communities in Solano County not captured by MTC's definition for Equity Priority Communities. The Solano Equity Indicator will be incorporated as part of the Draft Project Prioritization criteria that will be utilized to score projects across all three elements.

State of Good Repair Goal:

Committee members requested clarification on what the Pavement Condition Index (PCI) was in Solano County. In response, STA staff clarified that the PCI was a numerical index used to indicate the general condition of a pavement section, with PCI of 70 as "Fair" and 80-100 as "Good" and that it varied across Solano jurisdictions. For example, in older jurisdictions such as Benicia and Suisun City, which are almost fully built out, may have lower PCI compared to the City of Fairfield or Vacaville, which have space to continue growing before being fully built out.

Economic Vitality Goal:

Committee members concurred with supporting the third objective, "Support equitable access to economic opportunities throughout Solano County." Committee members even expanded discussion to include how arterials/highways/freeways projects may be barriers to walking/biking access across communities. The committee further discussed the need for bike/pedestrian access to cross over from Pittman Road to Suisun Valley Road.

Sustainability and Resiliency Goal:

Committee members requested clarification on what "green infrastructure" entailed in the objective. STA staff responded that green infrastructure included, but was not limited to, stormwater retention, permeable pavements, and landscaping that promotes carbon sequestration such as trees and other features that provide a positive environmental impact.

C. Solano Routes of Regional Significance Plan Update

Presented by Leslie Gould, STA.

Summary of Committee Member Comments:

None.

D. Solano Napa Activity Based Traffic Model

Presented by Robert Guerrero, STA.

Summary of Committee Member Comments:

None.

E. 2023 Congestion Management Program (CMP)

Presented by Dulce Jimenez, STA.

Summary of Committee Member Comments:

Committee members requested clarification on the difference between the Congestion Management Program (CMP) Network and the Routes of Regional Significance (RoRS). In response, STA staff informed the committee that the CMP Network was composed of 48 highway segments in Solano, which includes all state-owned roadways and 5 intersections. In comparison, the definition for RoRS encompasses the CMP Network, but also additional roadways that provide access to Transit Facilities of Regional Significance, roadways that provide intercity freeway/highway connections, access to major employment centers and roads critical for emergency response.

F. Solano Regional Transportation Impact Fee Annual Report

Presented by Jasper Alve, STA.

Summary of Committee Member Comments:

In response to committee members' request to clarify the RTIF programming process, STA staff informed the committee that member agencies can request funding for projects identified in the RTIF Nexus study, with the latest update conducted in 2023. The funding requests submitted by member agencies are then brought to the STA Technical Advisory Committee (TAC) for their review and recommendation to the STA Board.

6. ACTION ITEMS

A. None.

7. ROUND TABLE DISCUSSION

None.

8. ADJOURNMENT

The meeting was adjourned at 5:30 p.m.

THIS PAGE INTENTIONALLY LEFT BLANK.

ARTERIALS, HIGHWAYS, AND FREEWAYS COMMITTEE – MEETING #3

ELEMENT GOALS AND OBJECTIVES/ROUTES OF REGIONAL
SIGNIFICANCE



1

CTP ARTERIALS, HIGHWAYS, AND FREEWAYS ELEMENT - GOALS AND OBJECTIVES

DEFINITIONS

Goal – milestones that reflect achievement of Statement of Purpose

Improve system safety



Strategy/Policy/Objective – specific actions to achieve goal

Fund improvements to locations with above average collision rates



Performance metric – how do we measure progress towards the goal?

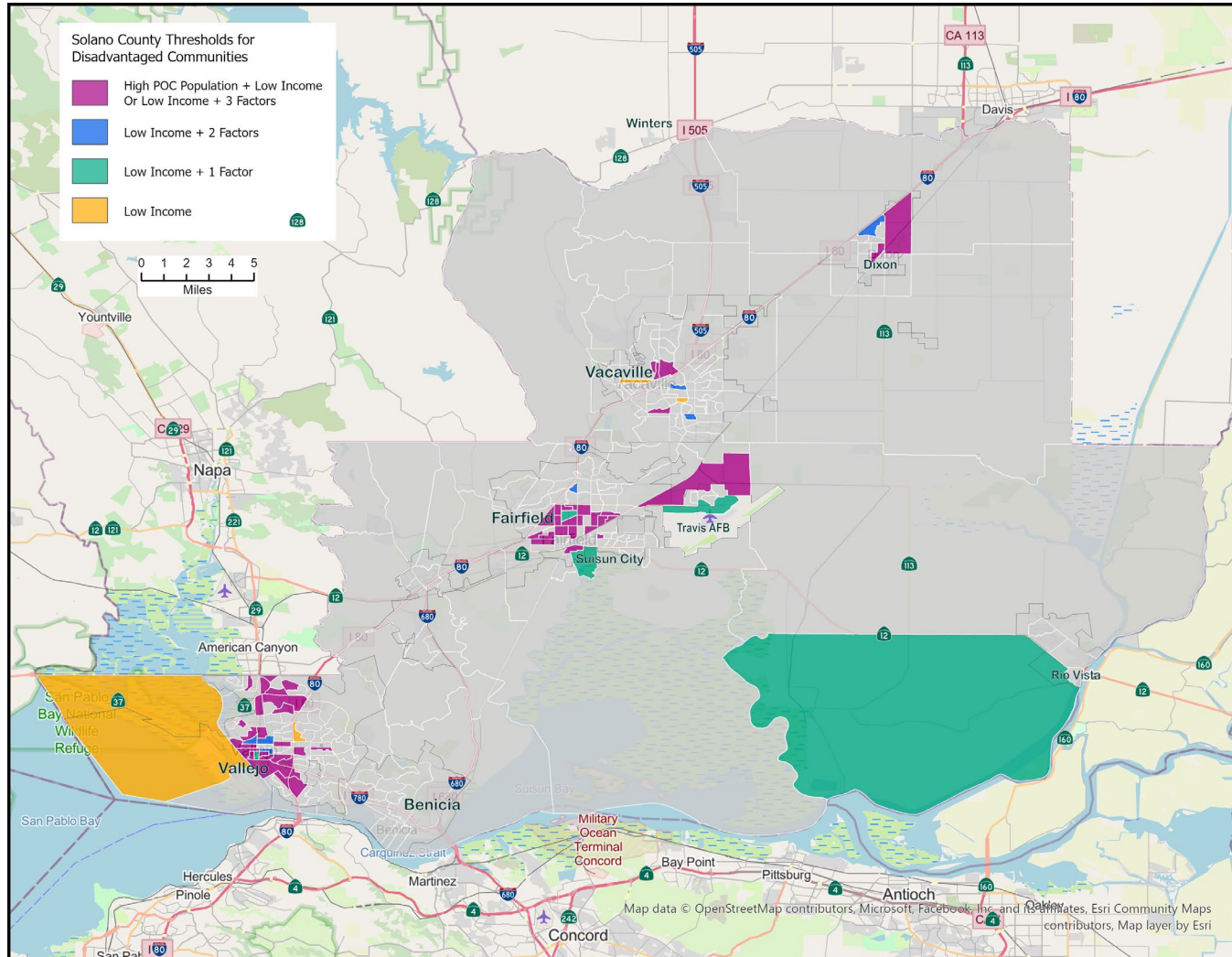
Fatality or serious injury collision rate

2020 COMPREHENSIVE TRANSPORTATION PLAN

1. Create an Arterials, Highways and Freeways System that improves mobility for all modes of travel (Mobility)
2. Improve system safety (Safety)
3. Maintain the system at an appropriate level (State of Good Repair)
4. Support the creation of Solano County jobs and other locally decided land uses (Economic Vitality)
5. Anticipate and mitigate system construction and operation impacts (Sustainability & Resilience)



NEW GOAL - EQUITY FRAMEWORK (UNDER DEVELOPMENT)



- Disadvantaged/underserved Communities
- Thresholds align with MTC definitions but with local refinements
- Equity considerations will underlie all goals, objectives and performance metrics, as well as project prioritization

MOBILITY

Proposed revisions for discussion (new text in bold):

Goal	Objective
<p>Create an Arterials, Highways and Freeways System that improves mobility for all modes of travel.</p>	<p>Prioritize funds for projects that improve Routes of Regional Significance in an equitable manner.</p>
	<p>Seek consistent width to avoid congestion caused by reduction in number of lanes. Develop and fund projects that eliminate bottlenecks.</p>
	<p>Implement Complete Streets appropriate to the context of the roadway. Implement Complete Streets projects that serve all roadway users, including transit vehicles.</p>
	<p>Implement active transportation facilities that serve all ages and abilities.</p>
	<p>Improve system efficiency through technology prior to adding lanes. Prioritize projects that improve efficiency (e.g., through technology) versus increased capacity.</p>
	<p>Identify and preserve needed rights of way for future transportation projects.</p>
	<p>Develop and implement corridor plans.</p>

SAFETY

Proposed revisions for discussion (new text in bold):

Goal	Objective
Improve system safety	Identify locations on local arterial streets with above-average number or rates of collisions, and fund improvements to reduce collisions to average.
	Implement Complete Streets projects that reduce conflicts between vehicles and vulnerable roadway users.
	Fund projects identified through systemic safety analysis to equitably and proactively identify safety enhancing projects.

STATE OF GOOD REPAIR

Proposed revisions for discussion (new text in bold):

Goal	Objective
Maintain the system at an appropriate level	Equitably invest funds to maintain a minimum Pavement Conditions Index (PCI) of Fair and an average rating of Good on the RORS network. Work with Caltrans to ensure that a similar standard is maintained on the State system.

ECONOMIC VITALITY

Goal	Objective
<p>Support the creation of Solano County jobs and other locally decided land uses</p>	<p>Identify roadway improvements that improve goods movement or reduce the impact of goods movement in Solano County.</p>
	<p>Identify roadway improvements that support retention or expansion of regionally important employment centers, retail centers and civic facilities.</p>
	<p>Prioritize available funds to support Priority Development Areas (PDAs), and Priority Conservation Areas (PCAs), and Priority Production Areas (PPAs) with special emphasis being given to support for Transit Facilities of Regional Significance.</p>
	<p>Support equitable access to economic opportunities throughout Solano County.</p>

SUSTAINABILITY AND RESILIENCY

Goal	Objective
<p>Anticipate and mitigate system construction and operation impacts</p> <p>Create a sustainable and resilient transportation network.</p>	<p>Special emphasis should be given to Emphasize projects and designs that reduce emissions of criteria pollutants and greenhouse gases.</p>
	<p>Where possible, use the avoidance and mitigation standards from the Solano Habitat Conservation Plan for STA transportation projects.</p>
	<p>Incorporate green infrastructure wherever possible.</p>
	<p>Explore the feasibility of establishing a countywide VMT mitigation program or exchange bank. Reduce or mitigate VMT within Solano County.</p>
	<p>Plan for climate adaptation and resiliency, including analysis of evacuation routes.</p>
	<p>Ensure that environmental impacts of the transportation network are not disproportionately concentrated within Solano County underserved/disadvantaged communities.</p>



ROUTES OF REGIONAL SIGNIFICANCE

CRITERIA FOR ROUTES OF REGIONAL SIGNIFICANCE

The Solano Routes of Regional Significance identifies the roadway network on which STA focuses investments.

All roadways in the
Congestion
Management
Program network

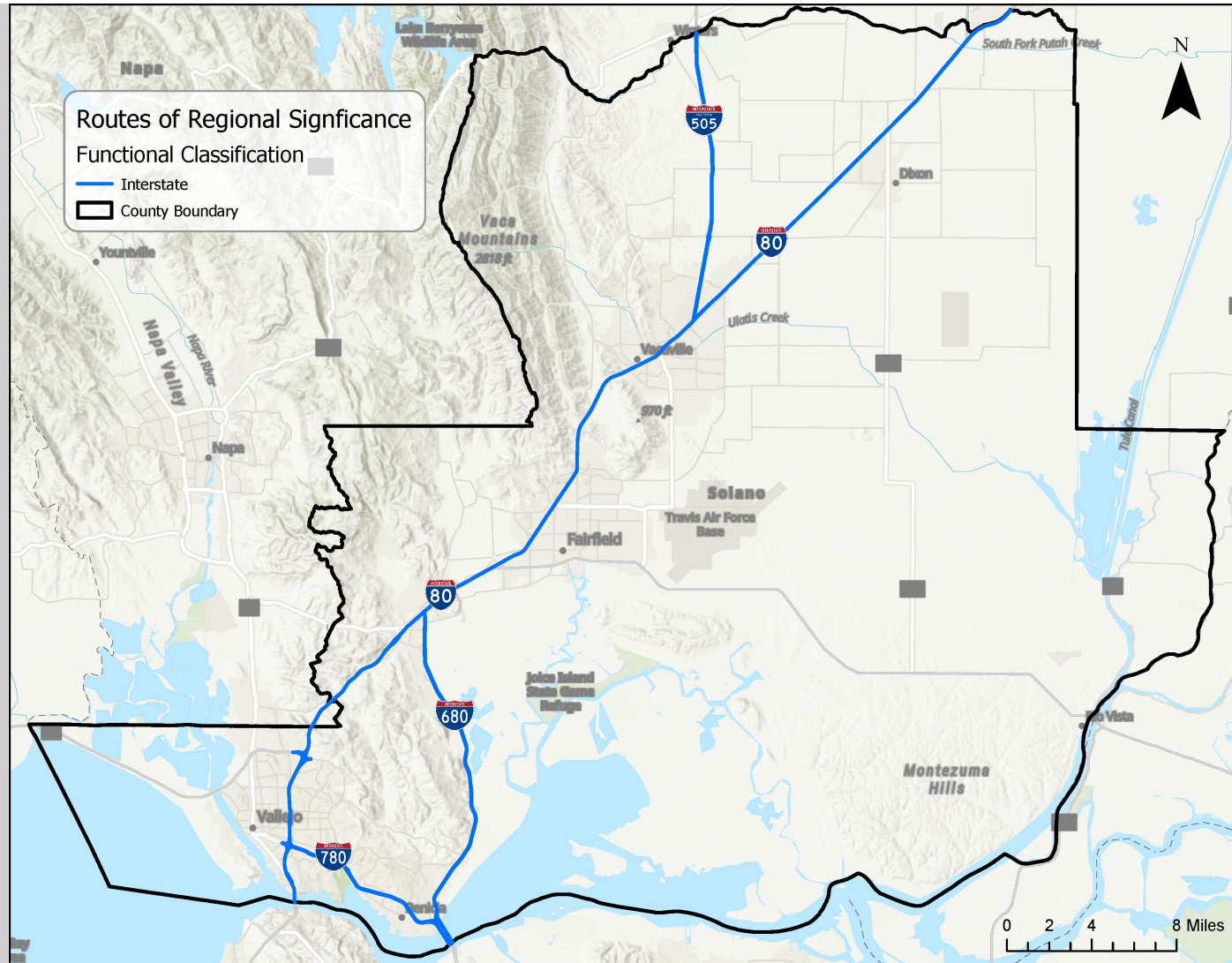
Roadways providing
access to Transit
Facilities of Regional
Significance

Higher volume
roadways providing
access to major
employment centers

Roads providing
intercity and
freeway/highway
connections

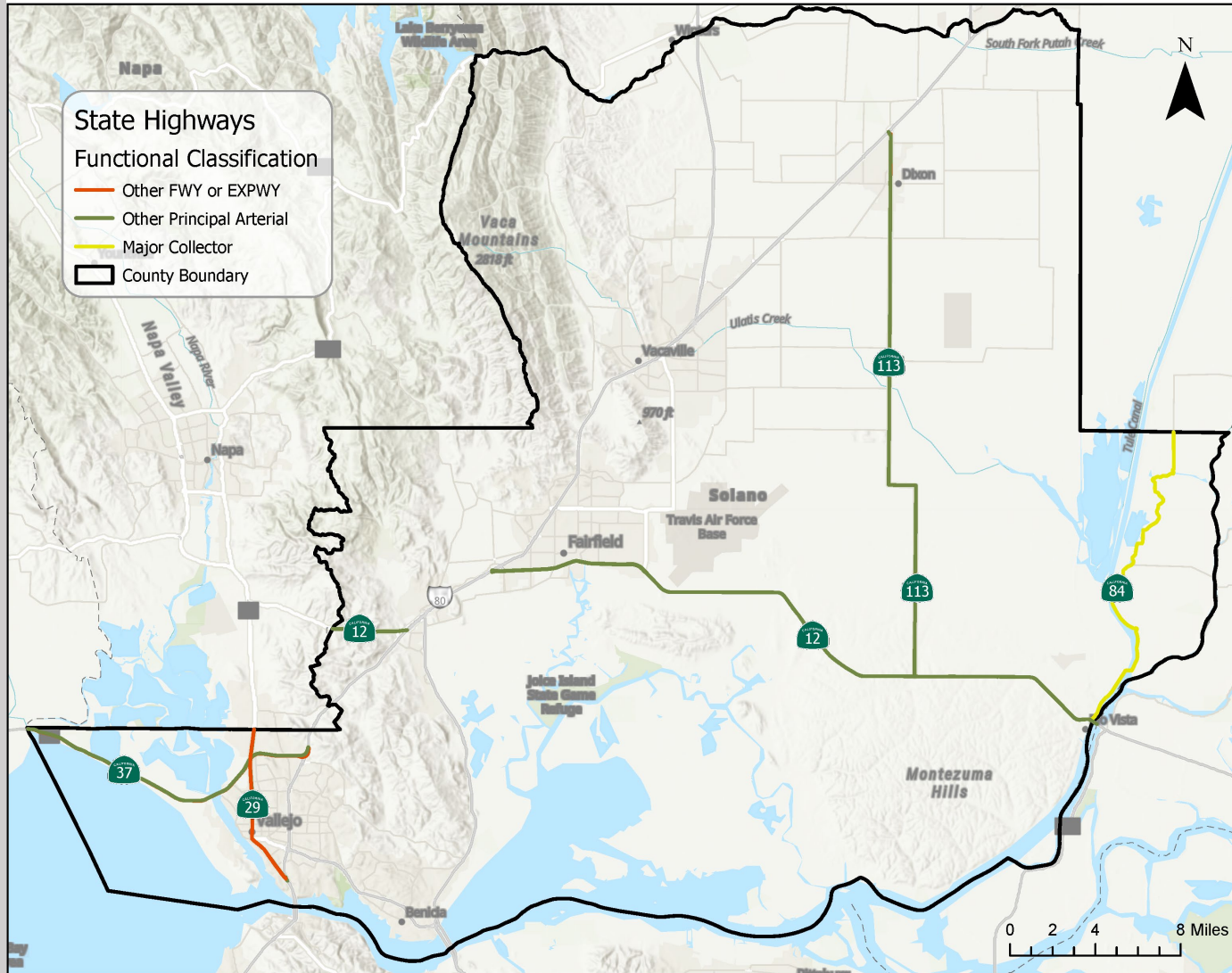
Other roads critical
to countywide
emergency response

CURRENT ROUTES OF REGIONAL SIGNIFICANCE - FREEWAYS



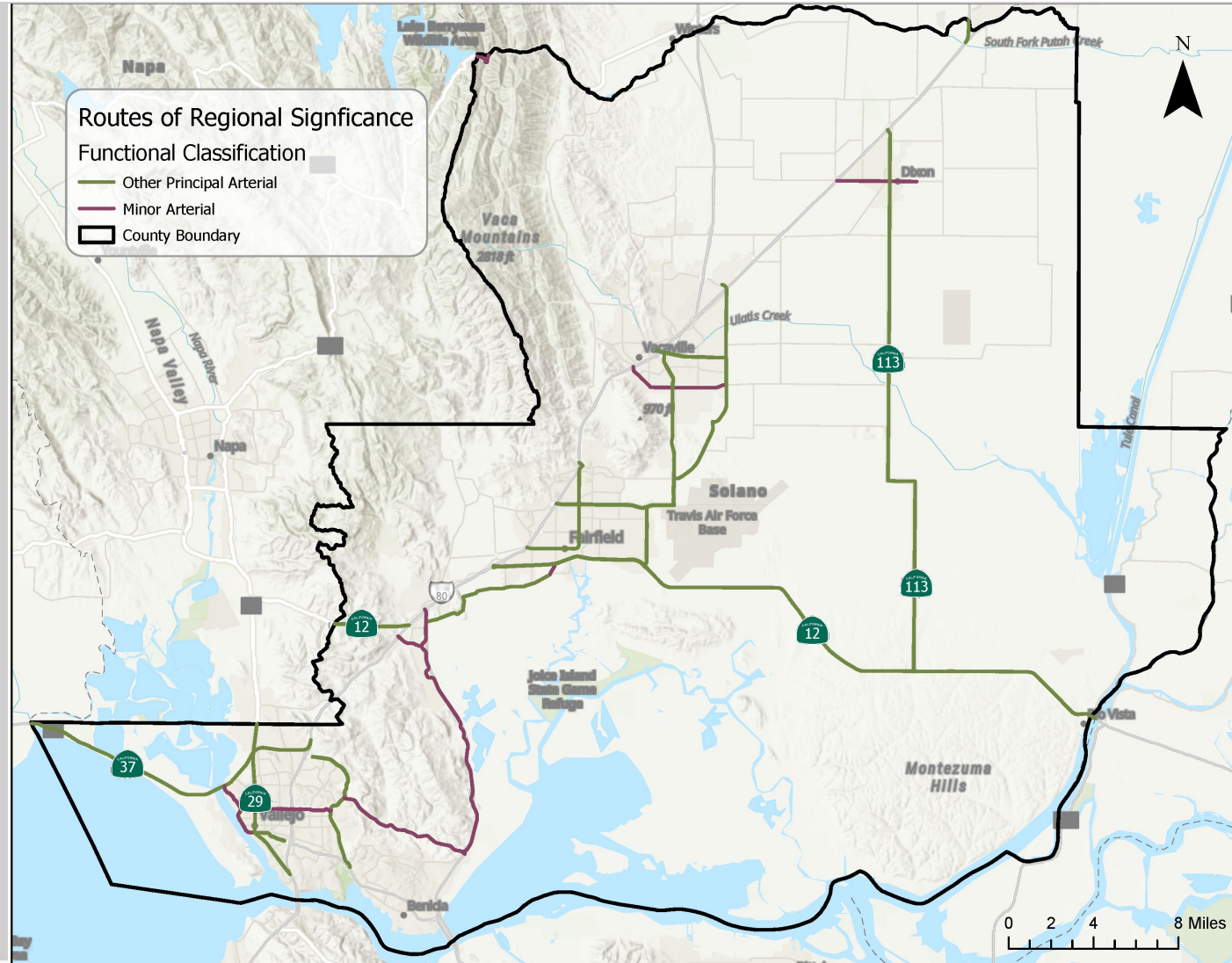
SOURCE: DKS ASSOCIATES

CURRENT ROUTES OF REGIONAL SIGNIFICANCE - HIGHWAYS



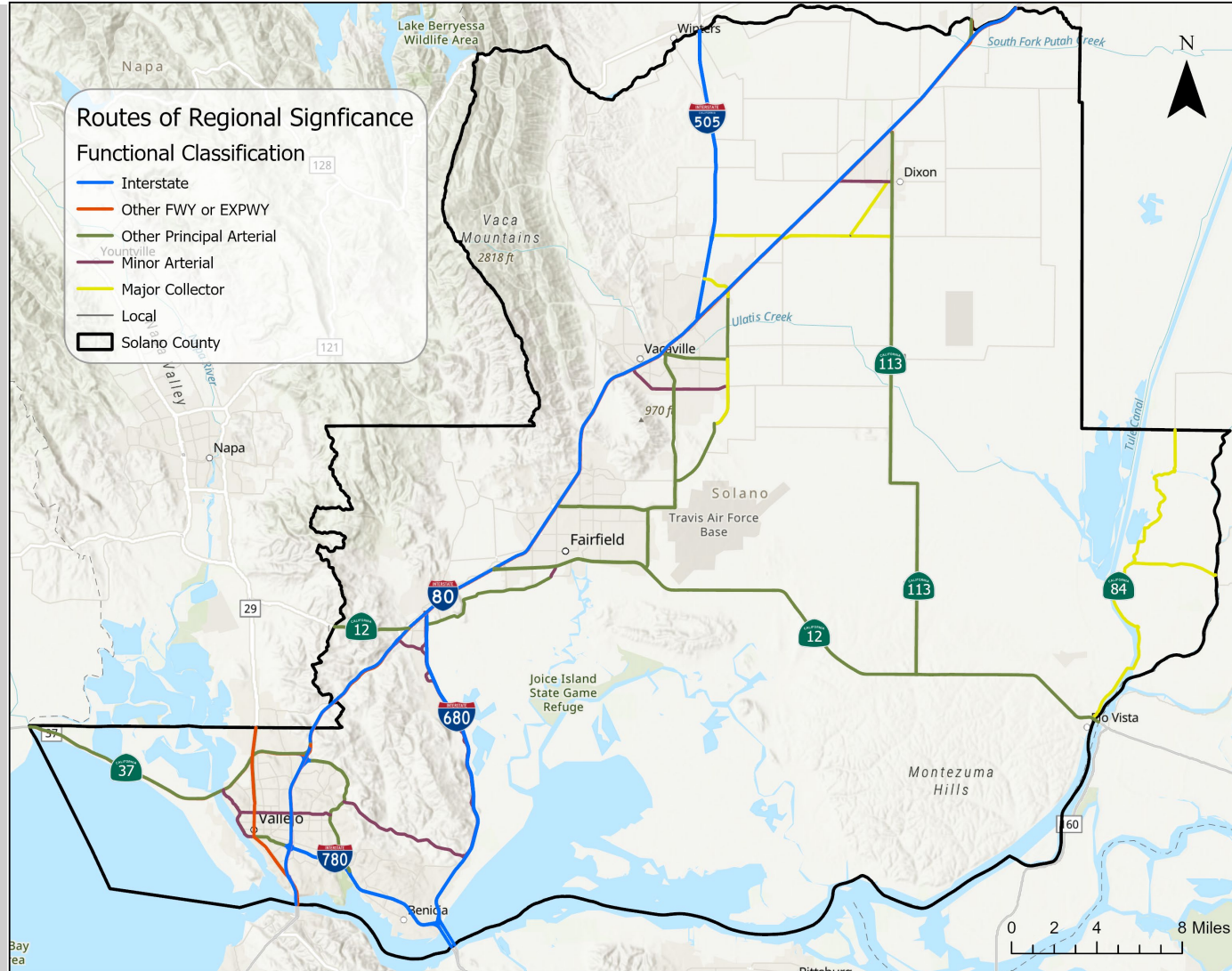
SOURCE: DKS ASSOCIATES

CURRENT ROUTES OF REGIONAL SIGNIFICANCE - ARTERIALS



SOURCE: DKS ASSOCIATES

CURRENT ROUTES OF REGIONAL SIGNIFICANCE



SOURCE: DKS ASSOCIATES

THANK YOU

DKS CORE VALUES

MEANINGFUL DIFFERENCE

OPPORTUNITY

EXPERTISE

TRUSTWORTHY

CLIENT SATISFACTION

TEAMWORK

SHAPING A SMARTER
TRANSPORTATION EXPERIENCE™
DKSASSOCIATES.COM



AN EMPLOYEE-OWNED COMPANY

THIS PAGE IS INTENTIONALLY LEFT BLANK.



DRAFT PRIORITIZATION METHODOLOGY MEMO

DATE: December 3, 2024

TO: Kathrina Gregana | Solano Transportation Authority
Robert Guerrero | Solano Transportation Authority

FROM: Josh Pilachowski | DKS Associates
Erin Vaca | DKS Associates

SUBJECT: STA Countywide Comprehensive Transportation Plan

Project #23x02-025

INTRODUCTION

The purpose of this memorandum is to present an approach for prioritizing the list of projects that were identified as part of the Comprehensive Transportation Plan process. The plan will include projects that have previously been identified as well as newly identified projects, and each project will fall under one or more of the modal elements, including:

- Active Transportation
- Arterials, Freeways, and Highways
- Transit and Rideshare

This approach includes a summary of the prioritization process, identification of prioritization categories, and review of the criteria used for scoring. While the prioritization methodology will be made as universally applicable as possible, it recognizes that there are project and mode specific factors that do not apply to all projects and include a mode specific category that can be customized for each project as relevant. For example, different modes have different average trip lengths, and so their effect on travel patterns will be scored differently.

PRIORITIZATION CATEGORIES

Prioritization categories have been selected to align with the goal and objective statements identified for the plan and for each element. Additionally, there will be two additional categories (Local Needs and Priorities; Mode-Specific Factors) that will allow for some level of customized scoring across projects. The proposed prioritization categories are as follows:

- Mobility and Connectivity – Improving mobility and connectivity for all users of the regional transportation system

- Accessibility – Closing gaps and improving access to key destinations
- Safety – Improving Safety and reducing existing crash rates and severity
- Sustainability and Resiliency – Creating a sustainable and resilient transportation system
- Equity – Investing in an equitable and inclusive transportation system
- System Maintenance – Maintaining existing infrastructure
- Funding – Availability of funds or funding source(s)
- Local Needs and Priorities – Aligning with local transportation needs and priorities
- Mode-Specific Factors – Varies by mode

PRIORITIZATION SCORING CRITERIA

Each prioritization category has been given a recommended scoring criterion based on various factors related to each category. **Table 1** provides scoring criteria that can be applied across all projects regardless of mode. The Regional Transportation Network is a proxy term that refers to a combination of the Routes of Regional Significance, the Active Transportation Backbone Network, and Regional Transit hubs and routes (see attached **map series**).

In addition to the scoring criteria that can be applied to projects regardless of mode, there are scoring criteria that are only relevant to one or more specific modes (see **Table 2**).

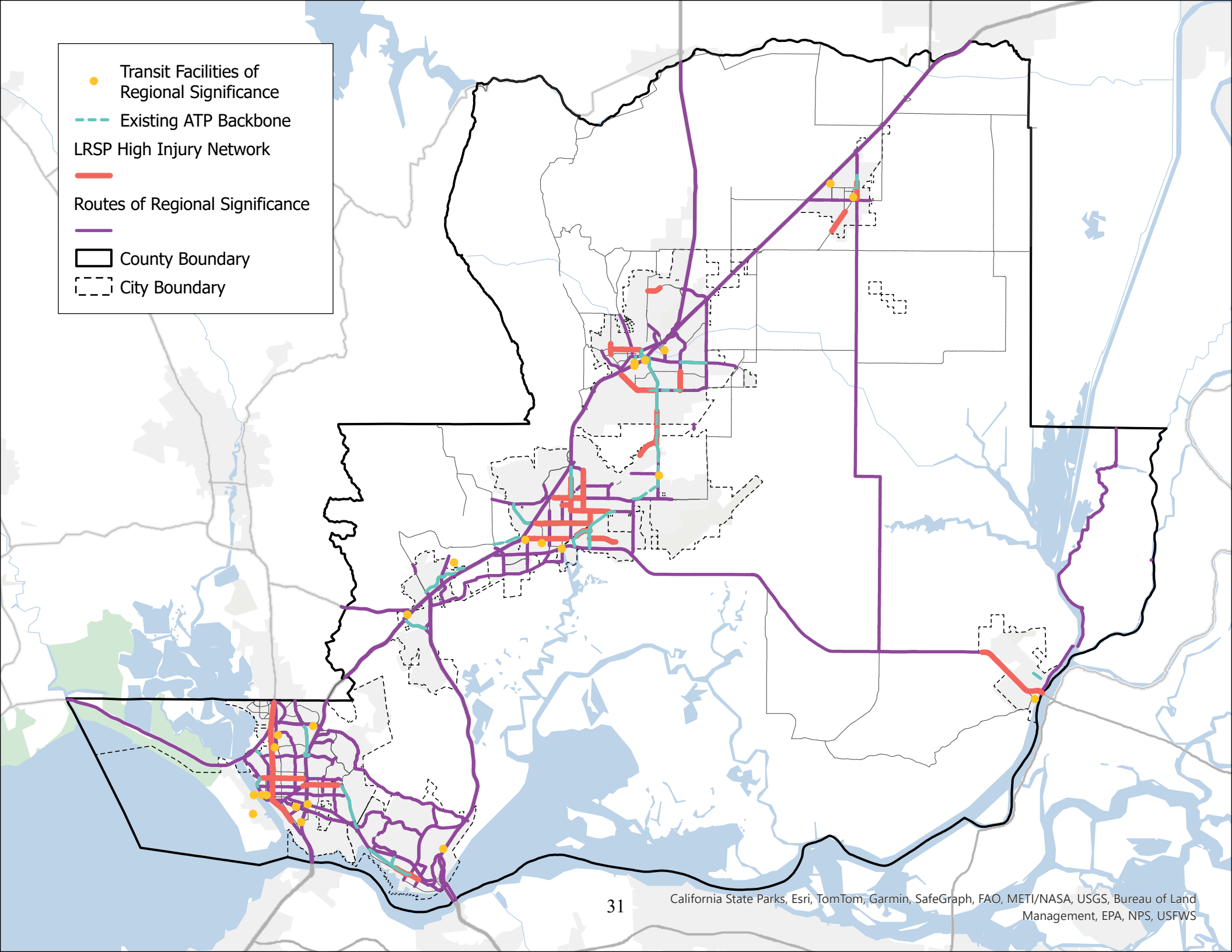
Table 1 - Prioritization Scoring (All Modes)

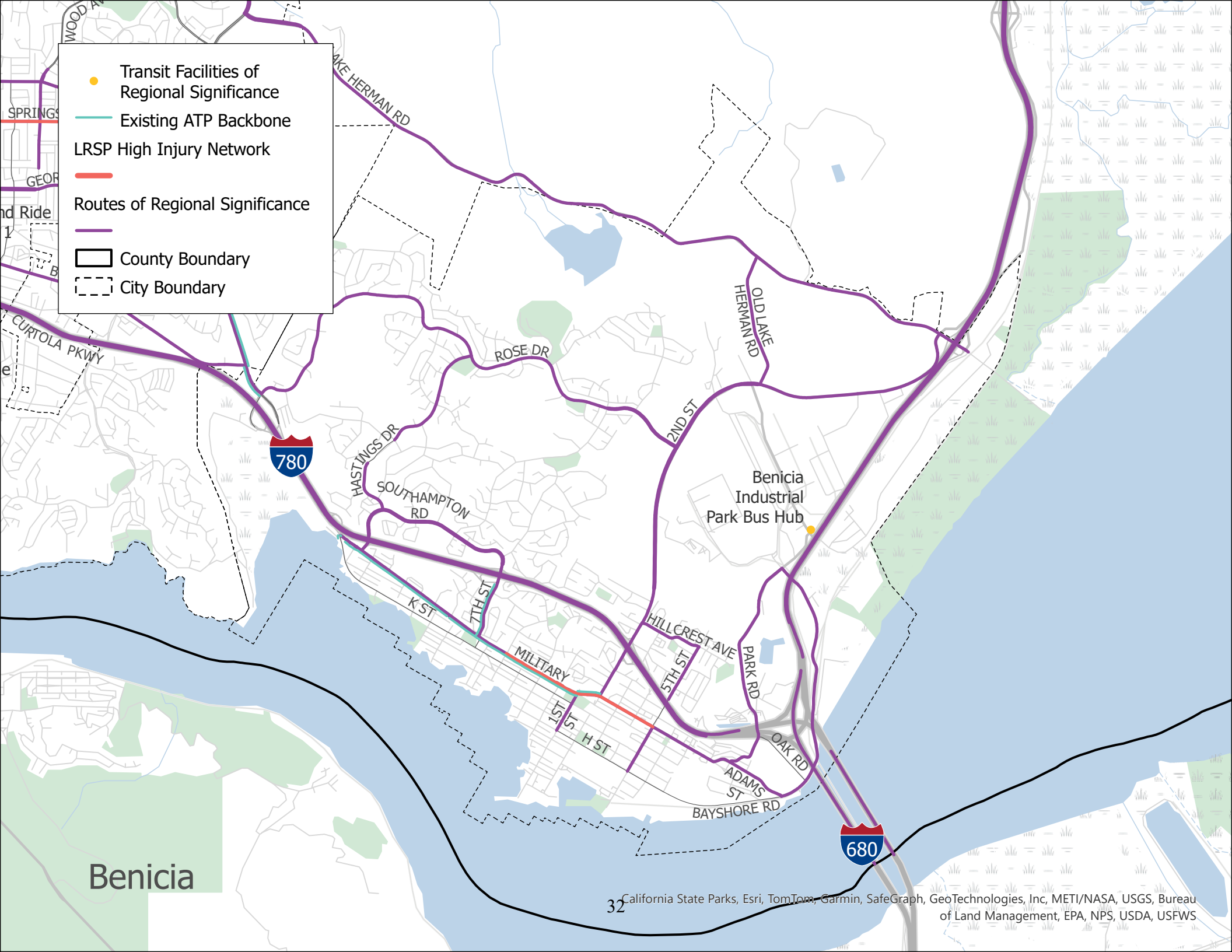
Category	Subcategory	Criteria	Points	Max
Mobility and Connectivity	<i>Multimodal</i>	Adds a multimodal hub to the Regional Transportation Network		12
		Complete Streets project on the Regional Transportation Network		
	<i>Mobility</i>	Eliminates a bottleneck on the Regional Transportation Network		
		Project improves efficiency/throughput without increasing vehicular capacity		
<i>Connectivity</i>	Connects to the Regional Transportation Network			
	Closes a gap in the Regional Transportation Network			
Accessibility	Provides access to key destination (employment, school, transit, essential services, community center) – Gap Closure			5
	Provides access to key destination (employment, school, transit, essential services, community center) – First/Last Mile			
	Improves universal accessibility of existing infrastructure			
	No improvement to accessibility			
Safety	Project located on the High Injury Network and identified in an adopted Local Road Safety Plan, Vision Zero Action Plan safety plan, or other equivalent safety plan			5
	Project located on the High Injury Network but not identified in a safety plan			
	Project is not located on in closer proximity the High Injury Network but is a proven safety countermeasure			
	Project is not safety related			
Sustainability and Resiliency	<i>Alternative Fuel Vehicles</i>	Implements Alternative Fuel Infrastructure		12
		Includes/encourages fleet conversion consistent with Advanced Clean Fleets (ACF) legislation		
		Improve Alternative Fuel Infrastructure		
		No Alternative Fuel Vehicle Involvement		
	<i>VMT Goals</i>	Project supports VMT/GHG reduction		
		Project does not induce VMT or VMT increase is mitigated		
		Project induces VMT		
<i>Resiliency</i>	Improves resiliency of key transportation infrastructure to climate change impacts			
	Identifies resiliency concerns from climate change impacts			
	No relevance to climate change impacts			
Equity	Project serves/benefits a Census block group meeting the Solano Low Income Threshold and 3 or more equity factors			5
	Project serves/benefits a Census block group meeting the Solano Low Income Threshold and at least 2 more equity factors			
	Project serves/benefits a Census block group meeting the Solano Low Income Threshold and at least 1 more equity factor			
	Project serves/benefits a Census block group meeting only the Solano Low Income Threshold			
	Project is not located within or serves/benefits an STA Equity Priority Community			
System Maintenance	Repair/Replace infrastructure			5
	Update infrastructure to meet current requirements/guidance			
	Planning effort to inventory or identify maintenance needs			
	No maintenance activities involved			
Funding and Project Readiness	<i>Project Stage</i>	Shovel Ready		9
		PS&E		
		PAED/Alternatives Analysis		
		Conceptual		
	<i>Project Funding</i>	Fully funded with Federal or State sources (plus local match)		
		Fully funded with local funds (RTIF, etc.) Not fully funded		
<i>Environmental Clearance</i>	Project environmentally cleared or exempt			
	Project not environmentally cleared and not exempt			
Local Needs and Priorities	Identified in a local plan			5
	Identified through community support/public outreach			
	Not identified through a local planning process			

Table 2 - Prioritization Scoring (Mode Specific)

Category	Subcategory	Criteria	Points	Max
Arterials, Hwys, & Fwys		Project implements improvement identified in a local or countywide evacuation study or the Solano County Safety Element		5
		Project benefits the movement of goods/freight		
		Project addresses a need identified in a corridor plan		
		No impact on car/truck/freight movement		
Bicycle	<i>Separation between Travel Modes</i>	Class I and IV – Greatest Separation		10
		Class II (Buffered bike lanes)		
		Class III (Bicycle Boulevard, not sharrows only)		
		Class II (Bike lanes)		
	No Separation			
	<i>Level of Traffic Stress</i>	Achieves LTS 1 or LTS 2 (low stress)		
New Facility				
		Achieves LTS 3 or LTS 4		
Pedestrian	<i>Level of Traffic Stress</i>	Achieves LTS 1 or LTS 2 (low stress)		10
		New Facility		
		Project is LTS 3 or LTS 4		
	<i>Crossing Visibility</i>	Pedestrian Signal		
		Beaconed crossing/RRFB		
		High-visibility crosswalk		
		No visibility improvements		
Transit	<i>Transit Access</i>	Regional or Countywide Transit Center		10
		Construction of new, facility improvement, or access improvement to Local Transit Center		
		Construction of new, facility improvement, or access improvement to Local Transit Stop		
	<i>Transit Utilization</i>	Transit capital investment		
		Transit service hour increase /frequency improvement		
		Transit user assistance		
		Transit user information		
		Transit service marketing		
		No contribution to improving utilization		

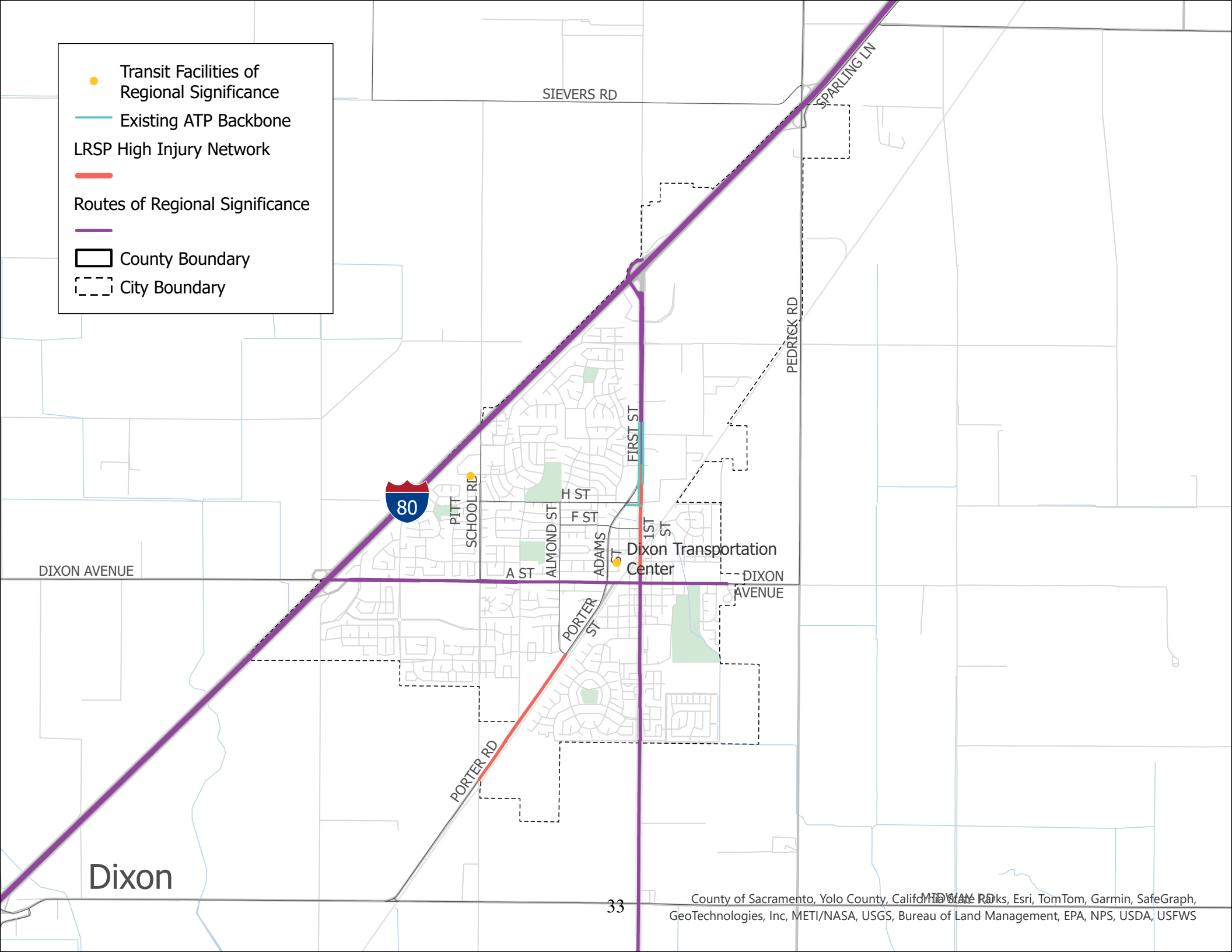
- Transit Facilities of Regional Significance
- - - Existing ATP Backbone
- LRSP High Injury Network
- Routes of Regional Significance
- Routes of Regional Significance
- County Boundary
- City Boundary





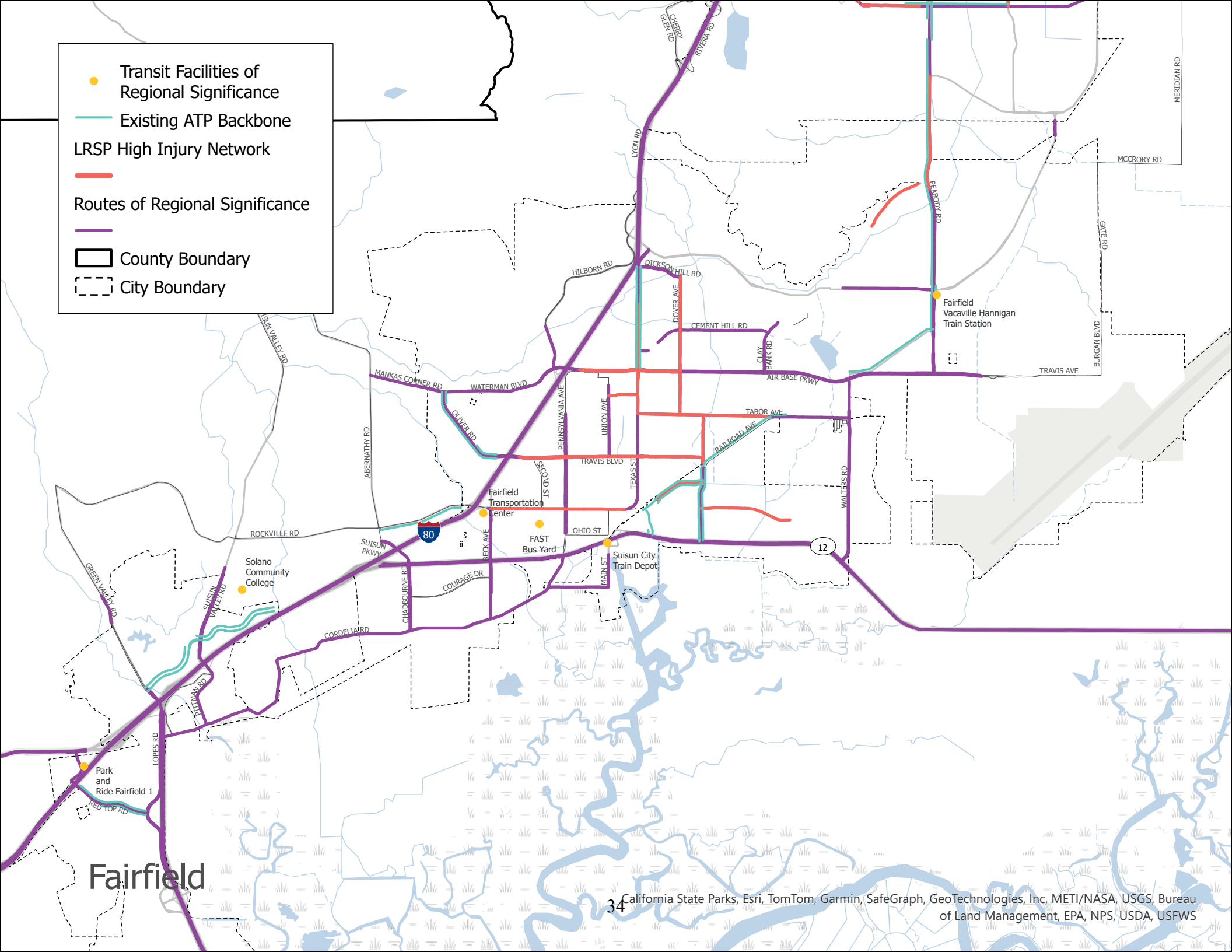
Benicia

- Transit Facilities of Regional Significance
- Existing ATP Backbone
- LRSP High Injury Network
- Routes of Regional Significance
- County Boundary
- City Boundary



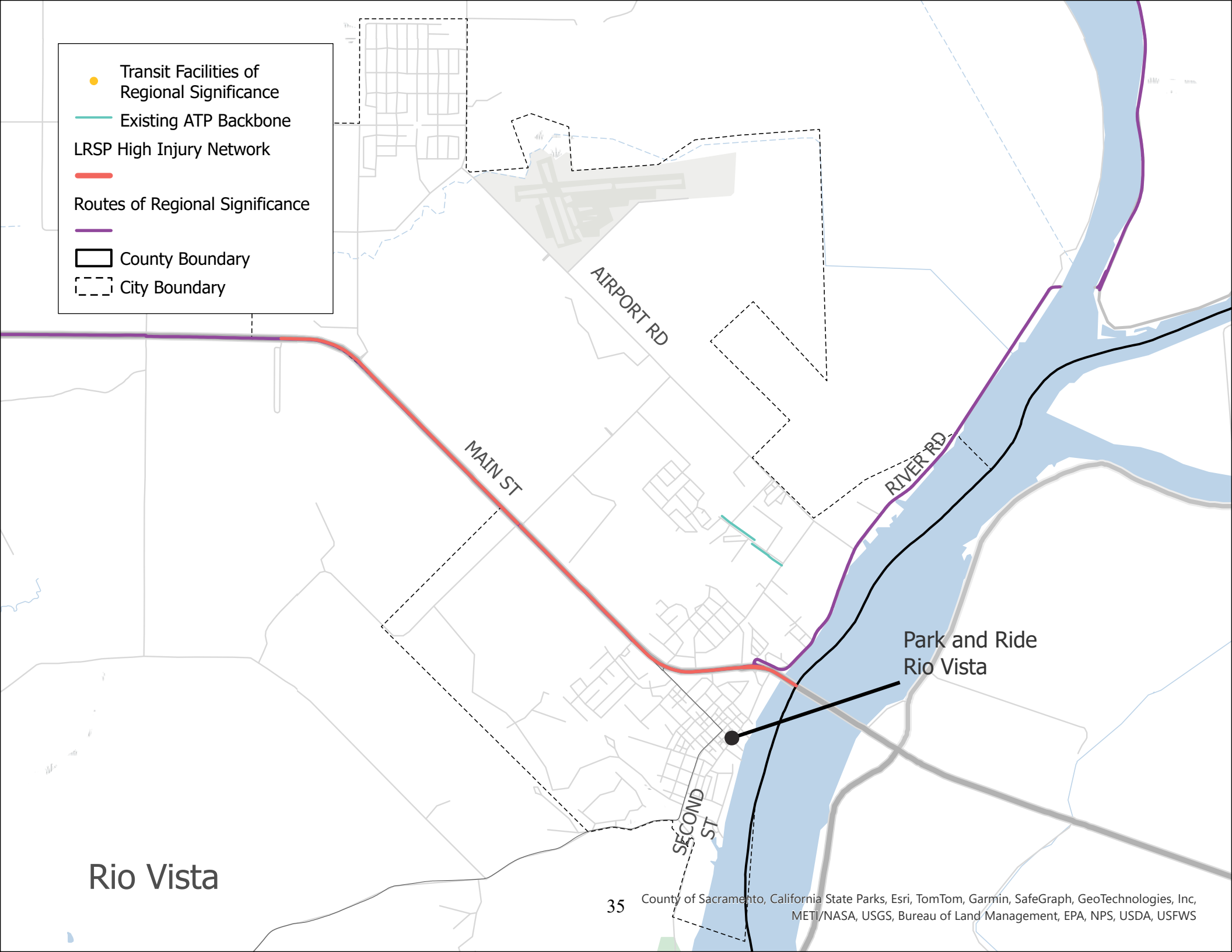
Dixon

- Transit Facilities of Regional Significance
- Existing ATP Backbone
- LRSP High Injury Network
- Routes of Regional Significance
- Routes of Regional Significance
- County Boundary
- City Boundary



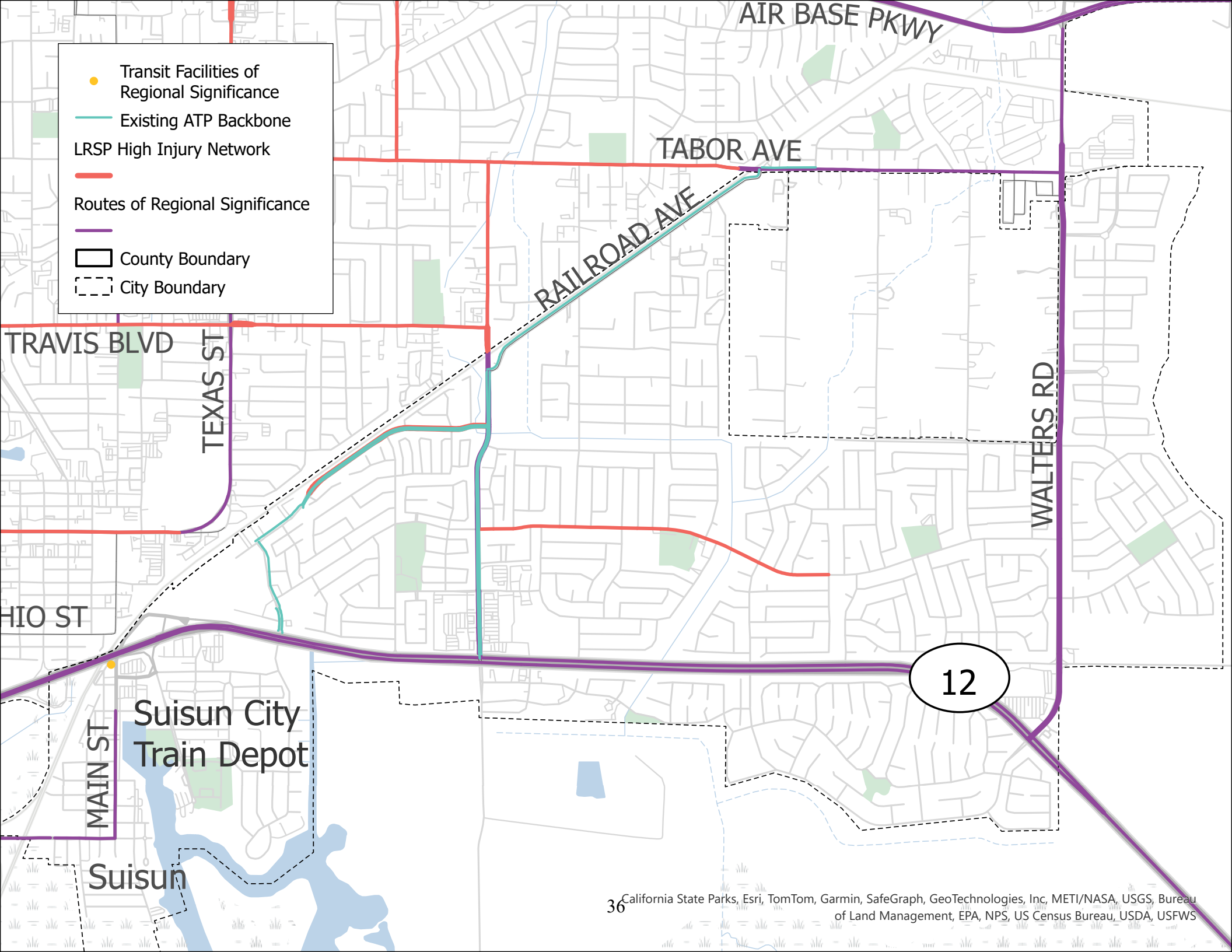
Fairfield

- Transit Facilities of Regional Significance
- Existing ATP Backbone
- LRSP High Injury Network
-
- Routes of Regional Significance
-
- County Boundary
- City Boundary



Rio Vista

Park and Ride
Rio Vista



- Transit Facilities of Regional Significance
- Existing ATP Backbone
- LRSP High Injury Network
- Routes of Regional Significance
- County Boundary
- City Boundary

AIR BASE PKWY

TABOR AVE

RAILROAD AVE

TRAVIS BLVD

TEXAS ST

WALTERS RD

OHIO ST

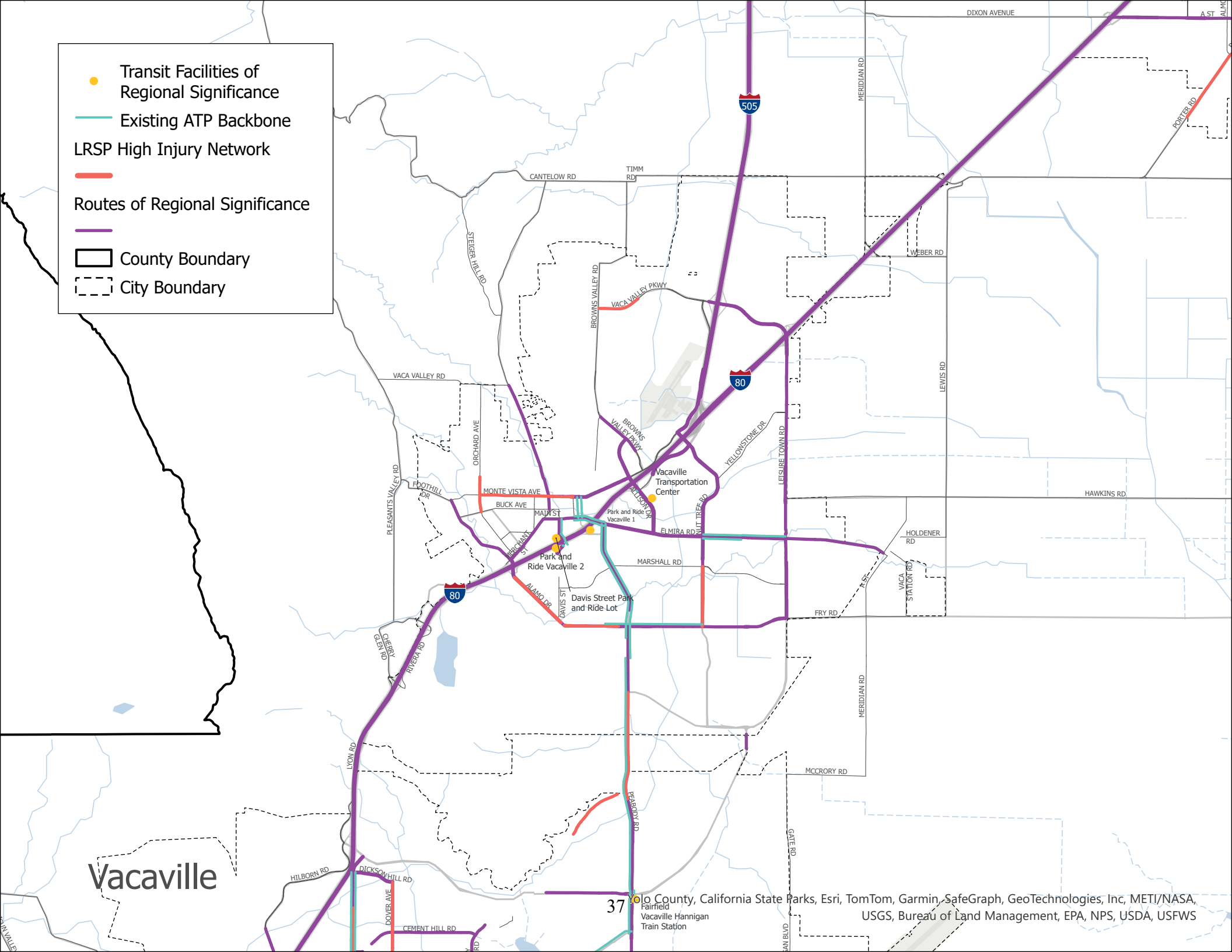
12

MAIN ST

Suisun City Train Depot

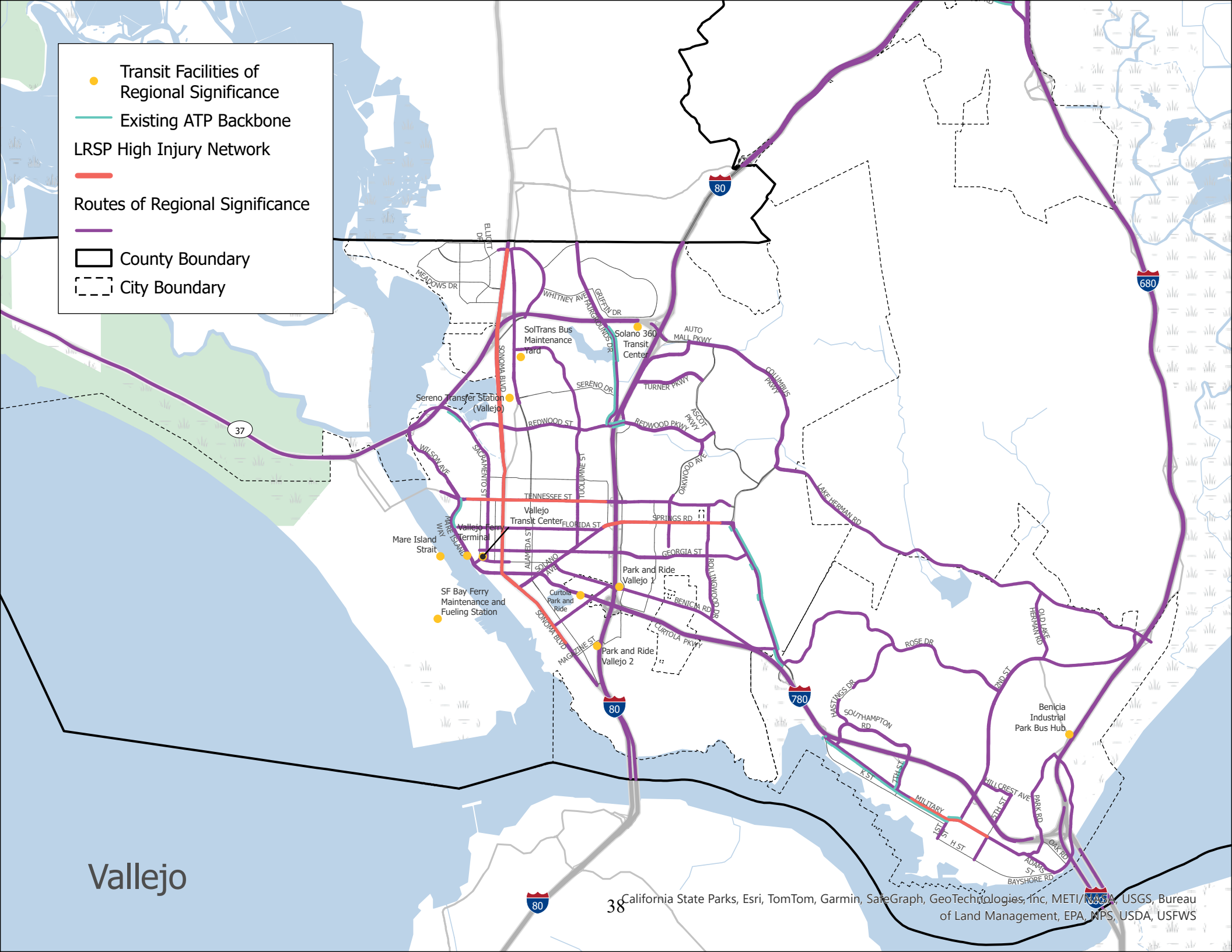
Suisun

- Transit Facilities of Regional Significance
- Existing ATP Backbone
- LRSP High Injury Network
-
- Routes of Regional Significance
-
- County Boundary
- City Boundary

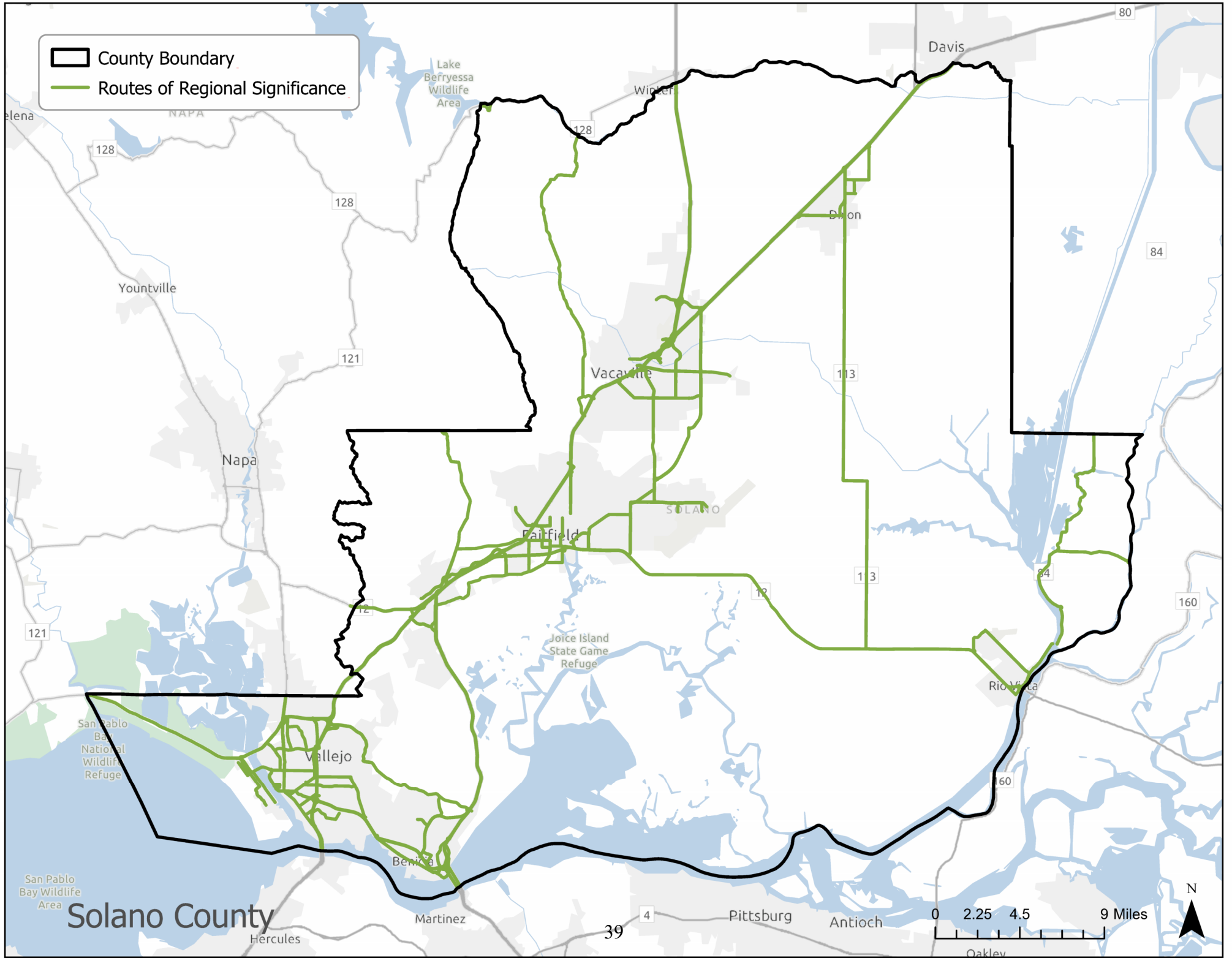


Vacaville

- Transit Facilities of Regional Significance
- Existing ATP Backbone
- LRSP High Injury Network
- Routes of Regional Significance
- County Boundary
- City Boundary



Vallejo



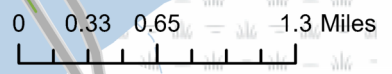
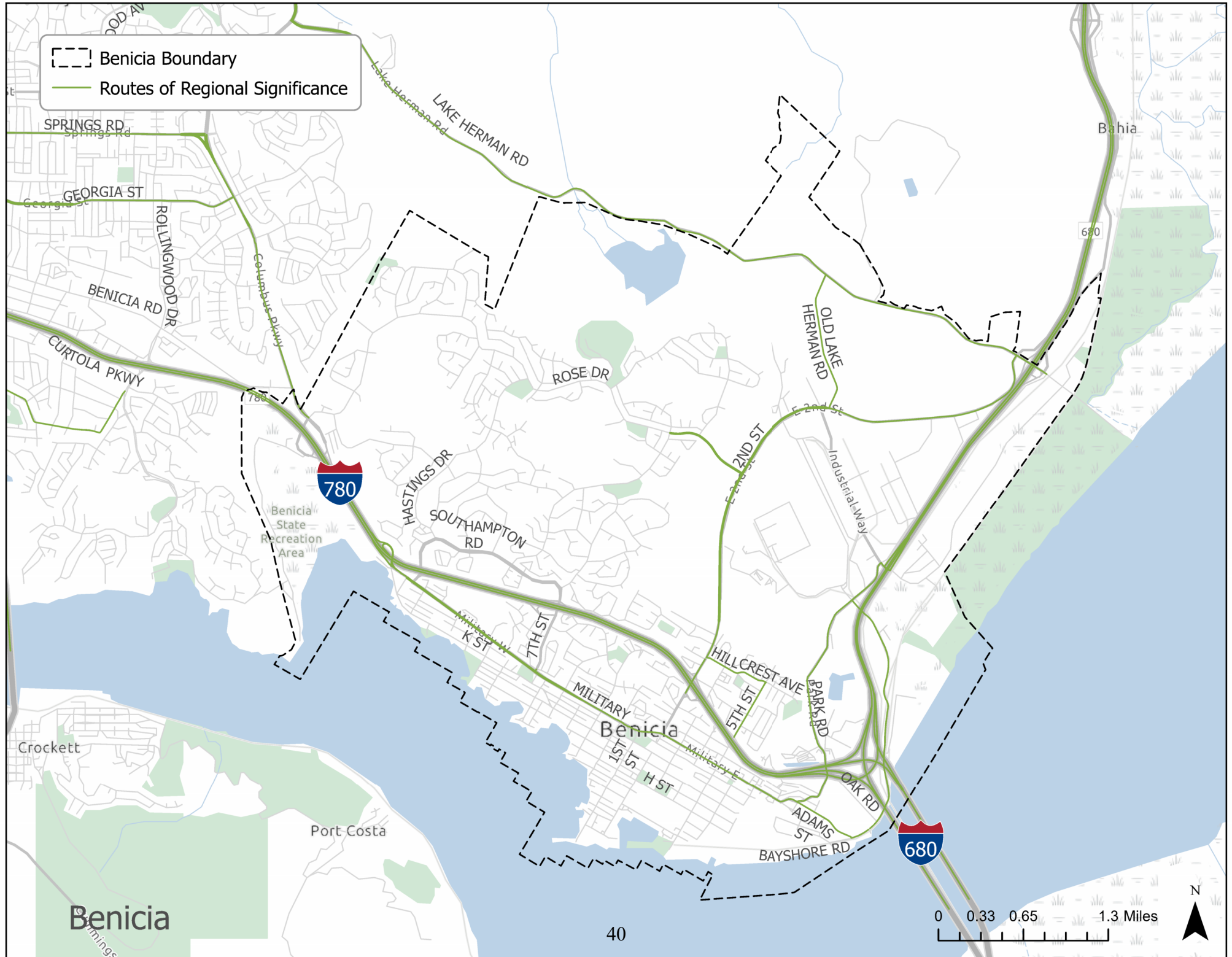
County Boundary
Routes of Regional Significance

Solano County

0 2.25 4.5 9 Miles

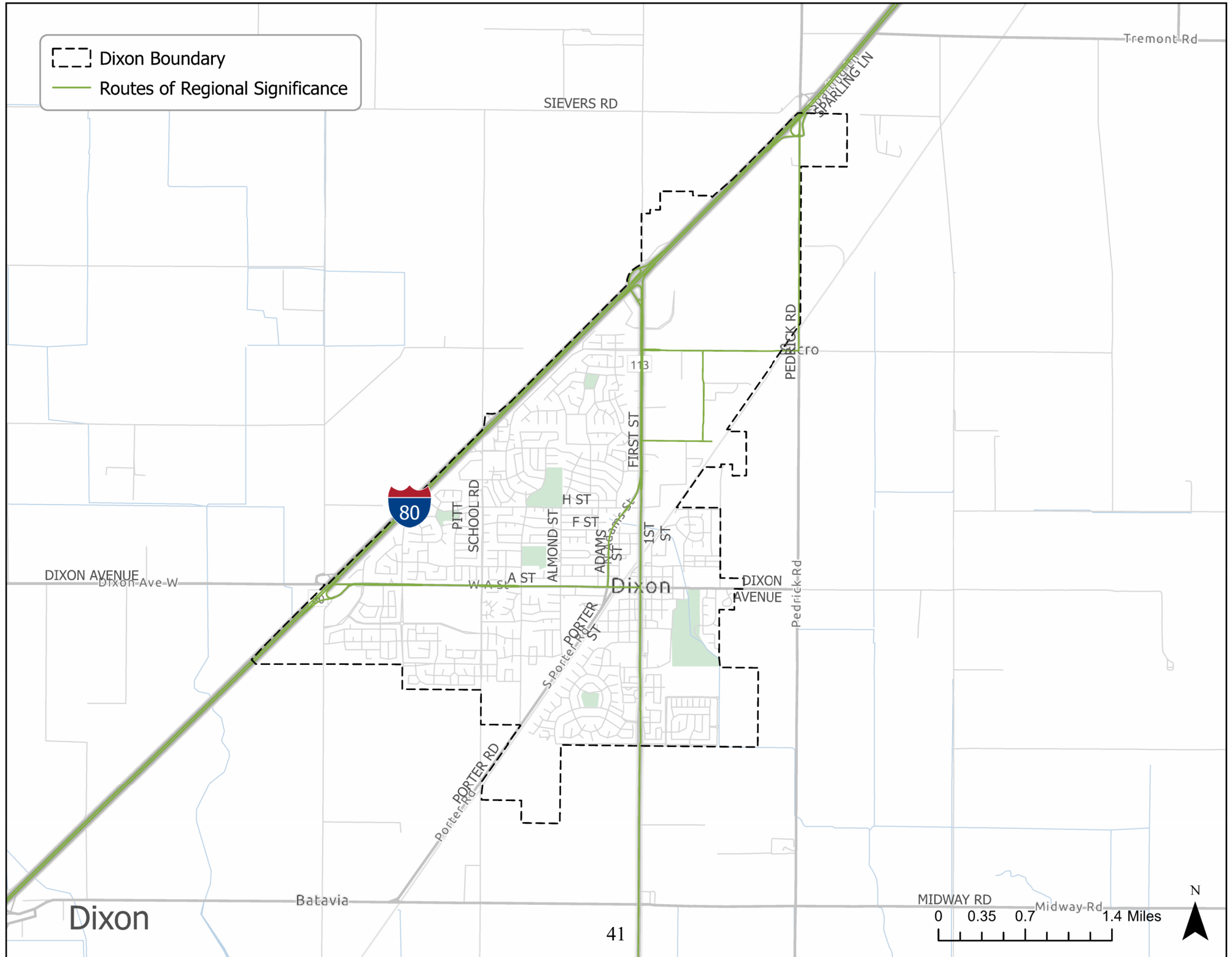


Benicia Boundary
 Routes of Regional Significance



Benicia

Dixon Boundary
 Routes of Regional Significance

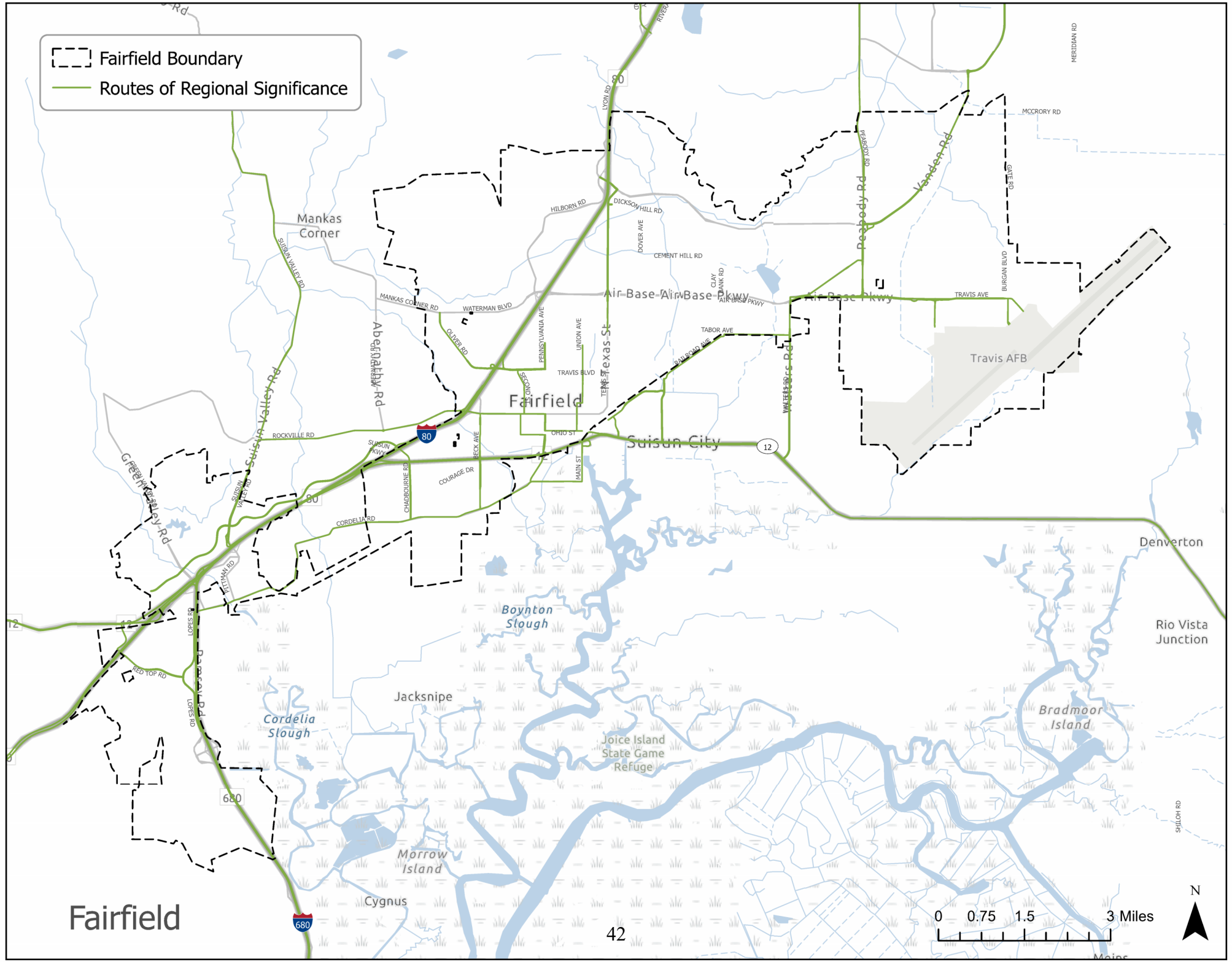


Dixon

41



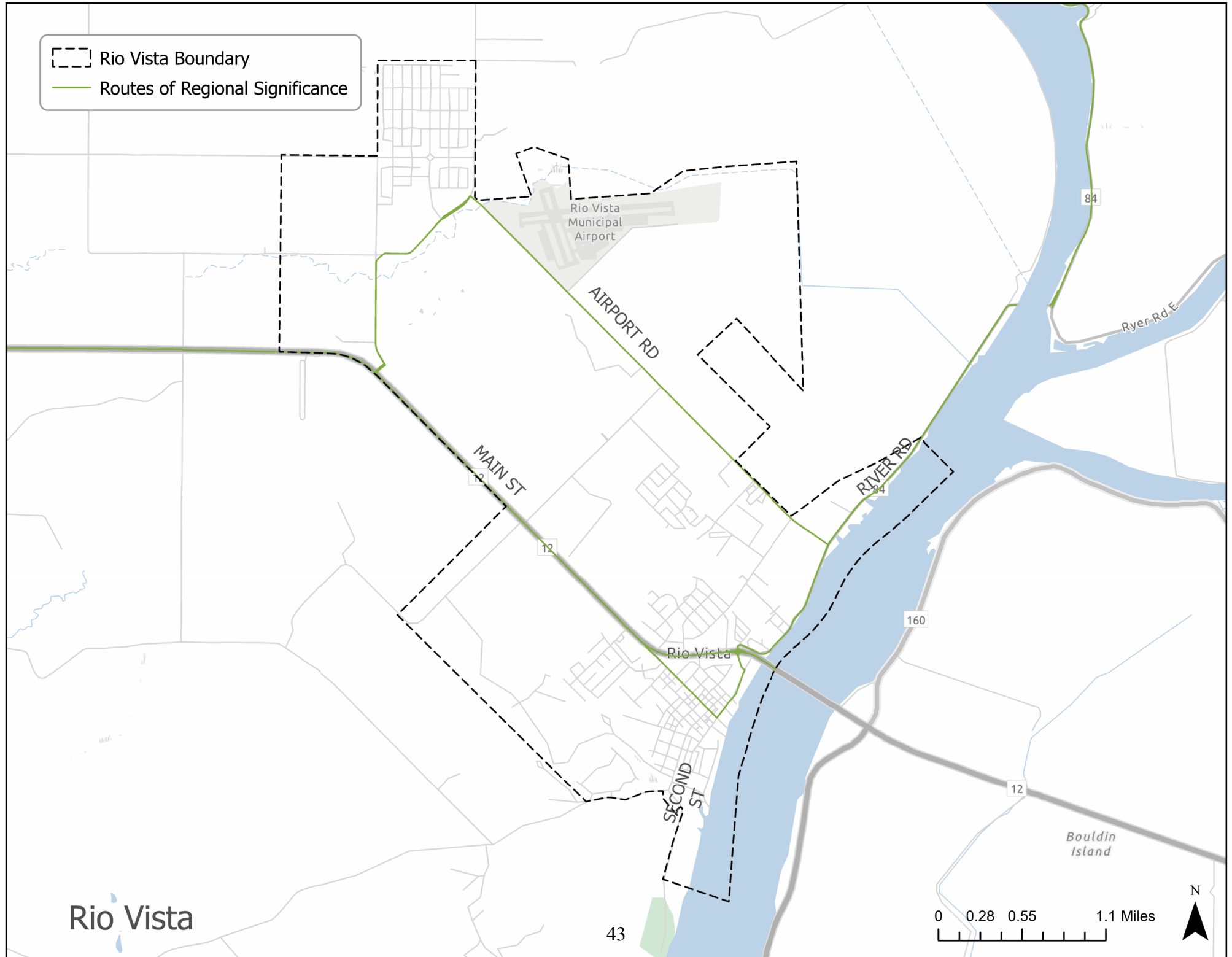
Fairfield Boundary
 Routes of Regional Significance



Fairfield



--- Rio Vista Boundary
— Routes of Regional Significance



Rio Vista Municipal Airport

AIRPORT RD

MAIN ST

RIVER RD

Rio Vista

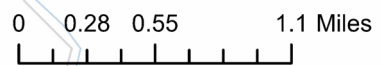
SECOND ST

Ryer Rd E

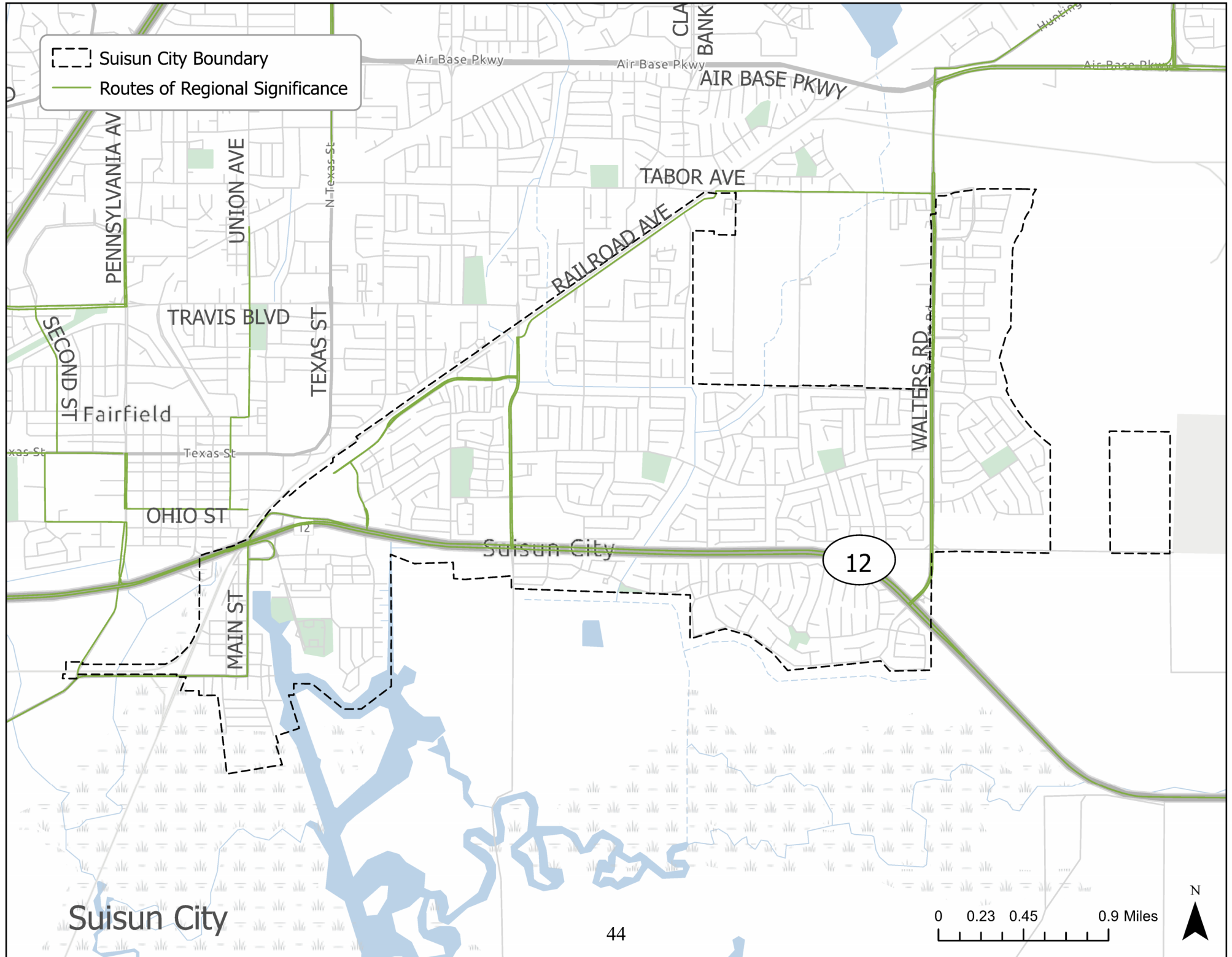
Bouldin Island

Rio Vista

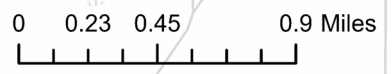
43



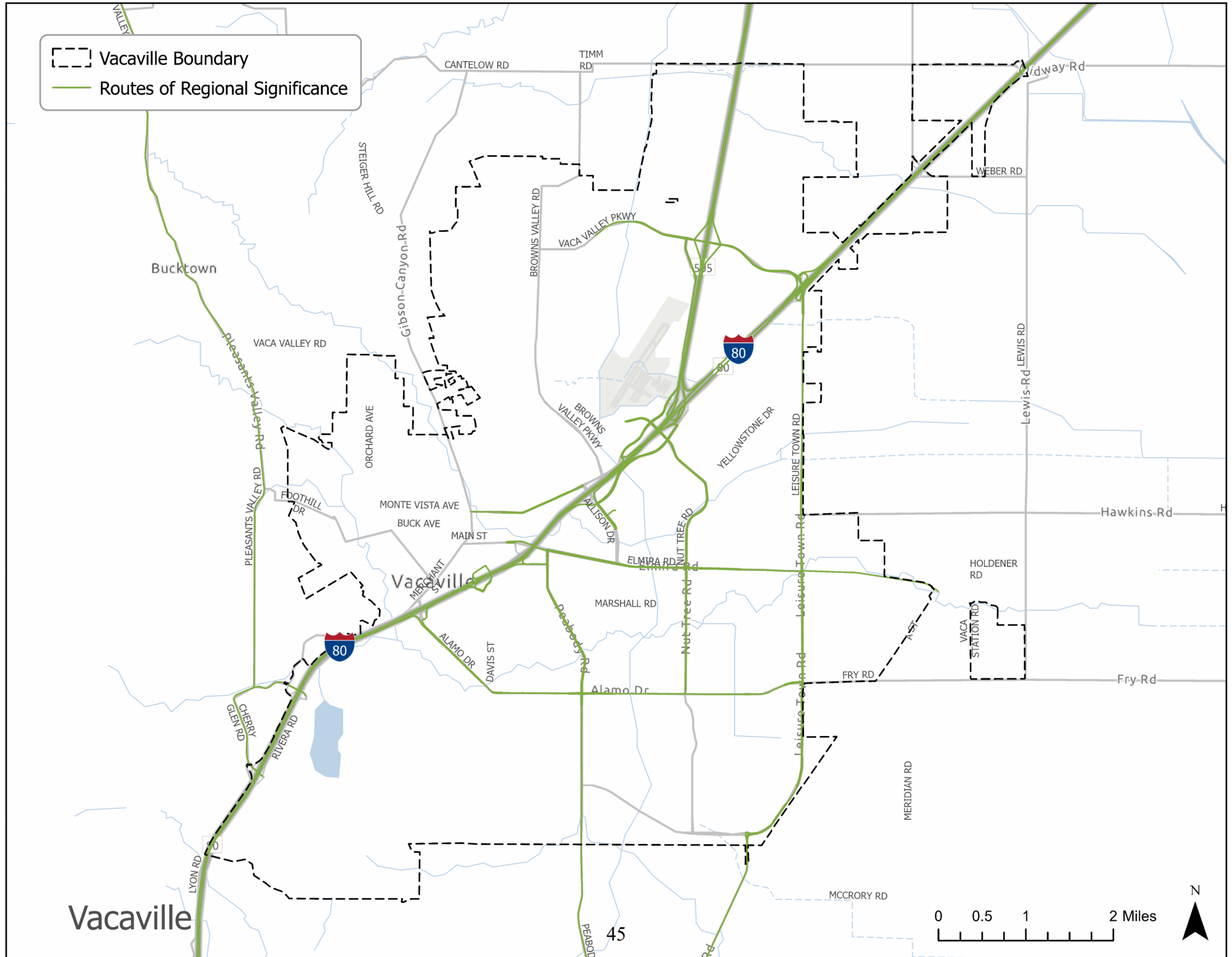
Suisun City Boundary
 Routes of Regional Significance



Suisun City



Vacaville Boundary
 Routes of Regional Significance

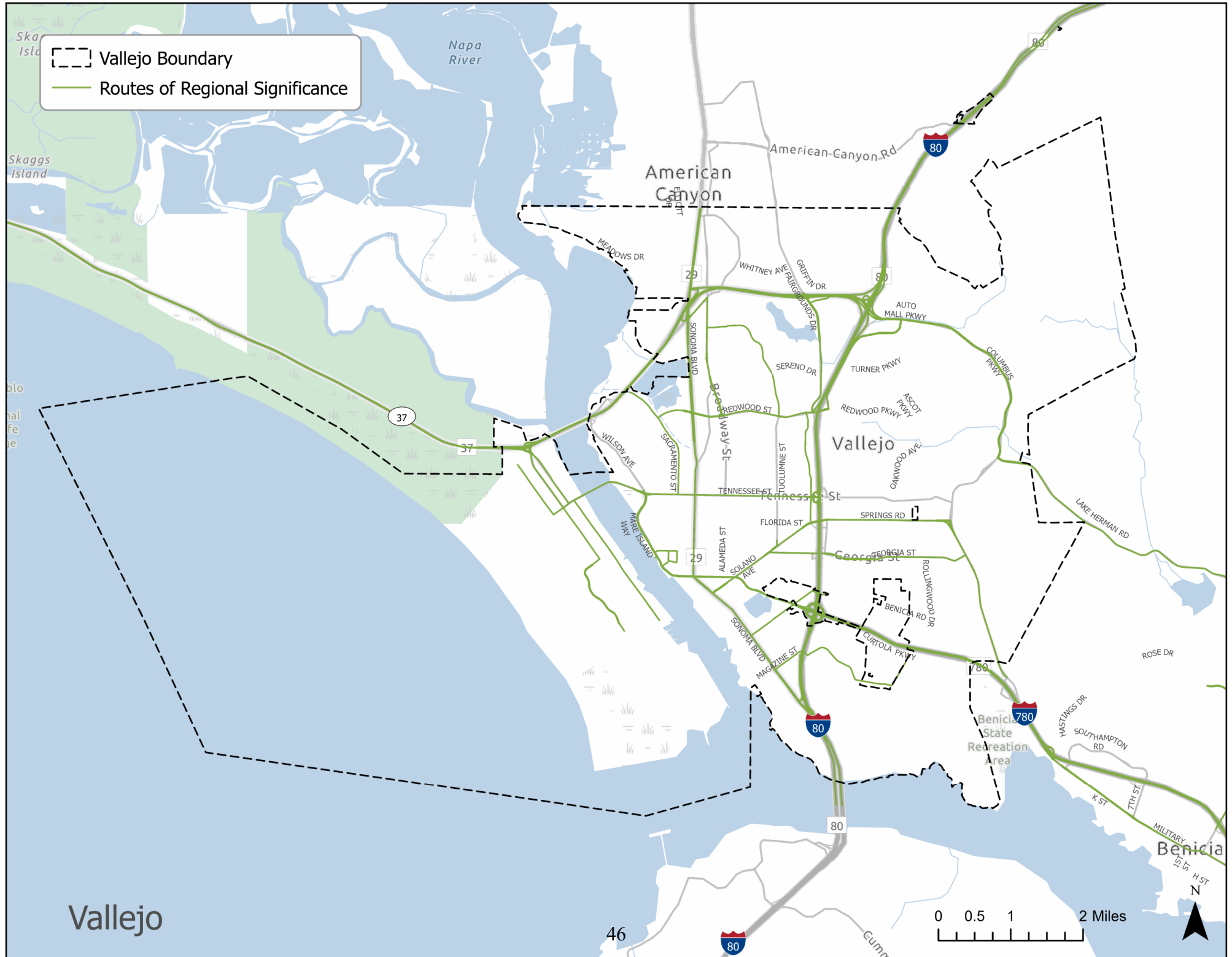


Vacaville



45

Vallejo Boundary
 Routes of Regional Significance



Vallejo

46



Benicia