



**PEDESTRIAN ADVISORY COMMITTEE (PAC)
MEETING AGENDA**

6:00 p.m.- 7:30 p.m., Thursday October 3, 2024

Meeting is being provided both in-person at: 423 Main St., Suisun City, CA 94585

STA Zoom Link

<https://us02web.zoom.us/j/83742782449?pwd=T1BHWTv1UHI0OXgrdW92Vm5LKzJIUT09&from=addon>

Join by Phone: 1(408) 638-0968

Meeting ID: 837 4278 2449, **Passcode:** 493044

MEETING AGENDA

ITEM

STAFF PERSON

- | | |
|--|---|
| <p>1. CALL TO ORDER/INTRODUCTIONS/CONFIRM QUORUM
(6:00 – 6:05 p.m.)</p> <p>2. APPROVAL OF AGENDA
(6:05 – 6:10 p.m.)</p> <p>3. OPPORTUNITY FOR PUBLIC & STAFF COMMENTS
(6:10 – 6:15 p.m.)</p> <ul style="list-style-type: none"> • 27th Annual STA Awards – November 13th at the Rio Vista Airport Hanger <p>4. CONSENT CALENDAR
Approve the following consent item in one motion.
(6:15 – 6:20 p.m.)</p> <p>A. PAC MEETING MINUTES
<u>Recommendation:</u>
Approve STA PAC Meeting Minutes of August 1, 2024.
Pg. 3</p> <p>5. PRESENTATIONS</p> <p>A. Patwino Worrntla Kodoi Dihi Open Space Park Presentation
(6:20 – 6:40 p.m.)</p> | <p>Diane Dooley, Chair</p> <p>Diane Dooley, Chair</p> <p>Diane Dooley, Chair</p> <p>Dulce Jimenez, STA</p> <p>Diane Dooley, Chair</p> <p>Natalie Quezada, STA</p> <p>Nicole Braddock,
Solano Land Trust</p> |
|--|---|

2024 PAC Members

<u>Diane Dooley</u> City of Benicia Chair	<u>Joseph Green-Heffern</u> City of Fairfield Vice-Chair	<u>Bob Berman</u> Bay Area Ridge Trail (Member at Large)	<u>David George</u> City of Suisun City	<u>Miranda Barber</u> City of Dixon	<u>Teresa Booth</u> City of Vallejo	<u>Cookie Clark</u> City of Vacaville
	<u>VACANT</u> City of Rio Vista	<u>Virginia Hernandez- Chavez</u> County of Solano	<u>Avery Livengood</u> Member at Large	<u>VACANT</u> Solano Community College		

6. ACTION NON-FINANCIAL

(6:40 – 7:10 p.m.)

- A. Regional Measure (RM) 3 Safe Routes to Transit and Bay Trail (SR2TBT) Program Complete Streets Checklists and Letters of Support**
(6:40 – 6:55 p.m.)

Dulce Jimenez, STA

Pg. 7

Recommendation:

Forward a recommendation to the STA Board to issue letters of support for the following member agency projects, which are also captured in the STA Active Transportation Plan:

- A. City of Benicia – Military East Sidewalk Gap Closure **Pg. 8**
- B. City of Suisun City – McCoy Creek Phase III **Pg. 15**
- C. City of Vallejo – Vallejo Bluff Trail **Pg. 24**
- D. Unincorporated County of Solano – Benicia Road Complete Streets Project Phase II **Pg. 31**

- B. Draft List of Recommended Walks for the Volume II of the Walking Brochure** (6:55 – 7:10 p.m.)

Dulce Jimenez, STA
Teri Booth, PAC
Cookie Clark, PAC
Michael Hayes, PAC
Joseph Green-Heffern, PAC

Recommendation:

Approve the Draft List of Recommended Walks as identified in Attachment A, with the caveat walks may be slightly modified by the PAC Ad Hoc and STA on an as needed basis.

Pg. 39

7. INFORMATIONAL ITEMS – DISCUSSION

(7:10 – 7:15 p.m.)

- A. Comprehensive Transportation Plan (CTP) and Upcoming Subcommittee Meetings**

Dulce Jimenez, STA

8. INFORMATIONAL ITEMS – NO DISCUSSION

- A. Week Without Driving Challenge - September 30th - October 4th 2024**

Dulce Jimenez, STA

9. PAC MEMBER UPDATES

(7:15 – 7:30 p.m.)

PAC Committee

10. ADJOURNMENT

The next meeting of the STA PAC is on **Thursday, December 3, 2024**, at STA.

Questions? Please contact STA Assistant Planner, Dulce Jimenez, at (707) 399-3214 or djimenez@sta.ca.gov

PAC 2025 Meeting Dates:

(The PAC meets every First Thursday on even months, unless otherwise rescheduled)

Please mark your calendars for these dates

- 6:00 pm, Thursday, Febuary 6, 2025**
- 6:00 pm, Thursday, April 3, 2025**
- 6:00 pm, Thursday, June 5, 2025**
- 6:00 pm, Thursday, August 7, 2025**
- 6:00 pm, Thursday, October 2, 2025**
- 6:00 pm, Thursday, December 4, 2025**

Translation Services: For document translation please email: Para traducción de documentos mande correo electrónico: Para sa mga dokumento tawag sa pagsasalin:Đổi với tài liệu gọi dịch: 對於文檔翻譯電話 iec@ie-center.org



Solano Transportation Authority

PEDESTRIAN ADVISORY COMMITTEE (PAC)

Minutes for the Meeting of

August 1, 2024

1. CALL TO ORDER/CONFIRM QUORUM

The meeting of the STA's Pedestrian Advisory Committee (PAC) was called to order by Vice-Chair Joseph Green-Heffern at approximately 6:00 p.m. Quorum was confirmed.

PAC Members Present (In Alphabetical Order by Last Name):

Miranda Barber	City of Dixon
Bob Berman	Member-At Large
Teresa Booth	City of Vallejo
Beatryce "Cookie" Clark	City of Vacaville
Michael Hayes	City of Rio Vista
Joseph Green-Heffern – Vice Chair	City of Fairfield
Virgina Hernandez-Chavez	County of Solano
Avery Livengood	Member-At Large

Absent PAC Members

Dr. Diane Dooley – Chair	City of Benicia
David George	City of Suisun City
VACANT	Member-At Large (Solano Community College)

Others Present:

Frances Neade	Solano County
Dulce Jimenez	STA
Natalie Quezada	STA
Andrea Solis	STA

2. APPROVAL OF AGENDA

On a motion by Cookie Clark and a second by Miranda Barber, the STA PAC approved the agenda. (6 Ayes)

3. OPPORTUNITY FOR PUBLIC & STAFF COMMENTS

Dulce Jimenez provided an update on the Safe Routes to School (SR2S) Plan which is scheduled to be completed by October 2024.

4. CONSENT CALENDAR

A. PAC MEETING MINUTES

Recommendation:

Approve STA PAC Meeting Minutes of February 1, 2024.

B. Joint BAC/PAC Meeting Minutes

Recommendation:

Approve Joint BAC/PAC Meeting Minutes of June 13, 2024.

On a motion by Michael Hayes, and a second by Miranda Barber the STA PAC approved the Consent Calendar Item 4.A. (7 Ayes).

5. PRESENTATIONS

A. None.

6. ACTION ITEM – NON-FINANCIAL

A. PAC Representative for the STA Safe Routes to School Advisory Committee (SR2S-AC)

Chair Dooley has been the SR2S-AC PAC representative for the last couple of years and has decided to step down from this position and therefore the committee were tasked in nominating and appointing a new representative to serve in the SR2S-AC.

Bob Berman nominated Virginia Hernandez-Chavez and Cookie Clark as PAC’s representatives for the SR2S-AC. Both Virginia Hernandez-Chavez and Cookie Clark indicated interest and would attend meetings before accepting the position.

Recommendation:

Nominate and appoint STA PAC representative for the SR2S-AC

On a motion by Bob Berman, and a second by Cookie Clark the STA PAC appointed Virginia Hernandez-Chavez to be STA PAC’s representative for the SR2S-AC and Cookie Clark as her alternate. (7 Ayes).

7. INFORMATIONAL ITEMS - DISCUSSION

A. Ad Hoc Committee Update on the Top 10 Walks Volume II Brochure

An outline of the work deliverables and summary of methodology of selecting the walking routes were provided to the committee. The PAC Ad Hoc members supported STA staff in identifying various walking routes throughout Solano communities, which were walked and scored by the committee members. The proposed walks were scored on a variety of categories which included connectivity to key destinations, amenities, safety, and accessibility. As part of the discussion, each walk and their respective scores were shared with the group along with high-level summaries of the reviewer comments.

Summary of Committee Members and Public Comments:

PAC members discussed the following brochure elements that should be considered when highlighting the walking routes:

- Each community should have at least one walk included in the new brochure.
- Photos of the walks should be included in the brochure.
- Consider including detailed features of each trail such as pavement accessibility, amenities for shade, water, restrooms, and parking, with potential fees, location of nearby transit
- Additional features that should be considered highlighting in the brochure – if the walks provided scenic/historical value, bird watching, pet friendly, and if they connect to nearby and/or future active transportation projects.

B. Comprehensive Transportation Plan (CTP) Subcommittee Meeting and Schedule Update

Ms. Jimenez provided an update to the changes to the CTP schedule and the next steps for each of the elements and opened the floor for PAC member’s feedback and questions.

i. Active Transportation Element Approved Goals and Objectives

The ATC, at the meeting held on July 20, 2024, approved to recommend the Draft Goals and Objectives to the Technical Advisory Committee (TAC) and then to the STA Board, tentative for December 2024.

ii. Upcoming CTP Subcommittee Meetings for Transit and Arterials/Highways/and Freeways

The Transit and Arterials, Highways and Freeways subcommittee meetings will include member agency presentations on their priority projects for these elements.

iii. Update on the Solano Equity Indicators.

She provided high-level summary of the Solano Equity Framework, which was shaped and informed by the Equity Working Group. The framework utilizes Solano County averages that allow for the additional identification of equity communities that are not currently captured by MTC’s Equity Priority Communities.

Summary of Committee Members and Public Comments:

PAC committee member inquired if there was any overlap with the walking routes identified in the second volume of the walking brochure with the equity communities identified by the Solano Equity Framework. STA staff took note of this comment.

8. INFORMATIONAL ITEMS – NO DISCUSSION

A. None.

9. COMMITTEE ROUNDTABLE

None.

10. FUTURE AGENDA TOPICS

11. ADJOURNMENT

The Solano PAC meeting adjourned at approximately 7:30 p.m. The next meeting of the STA PAC is on **Thursday, October 3, 2024**, via Zoom and in person.

DRAFT

THIS PAGE INTENTIONALLY LEFT BLANK



DATE: September 27, 2024
TO: STA PAC
FROM: Dulce Jimenez, Assistant Planner
RE: Regional Measure (RM) 3 Safe Routes to Transit/ Bay Trail – Complete Streets Checklists and Letters of Support

Discussion:

The first cycle of the Regional Measure (RM3) Safe Routes to Transit/Bay Trail (SR2TBT) covers four fiscal years (FY24-25 to FY27-28) with a base funding amount of \$50 million available for programming in each cycle, with \$25 million reserved for a transformative active transportation project. The [grant application](#) is due October 14, 2024.

As part of the application, project sponsors must submit a [Complete Streets Checklist](#), to be reviewed by the countywide Pedestrian Advisory Committee. As part of this grant cycle, the following member agencies will be submitting projects to be considered for SR2TBT grant funding – all the projects listed below are also captured in the STA Active Transportation Plan:

- City of Benicia – Military East Sidewalk Gap Closure
- City of Suisun City – McCoy Creek Phase III
- City of Vallejo – Vallejo Bluff Trail
- Unincorporated County of Solano – Benicia Road Complete Streets Project Phase IPAC

The PAC’s Role:

- 1.) Review the attached complete streets checklists, any comments/suggestions on the complete streets checklist may be submitted in writing by **noon Monday, October 7th, 2024** to djimenez@sta.ca.gov. Any comments/questions submitted by the PAC will be shared with the respective project sponsor.
- 2.) Due to the competitive nature of the grant, STA staff recommends the PAC committee take action at the October 3rd meeting to forward a recommendation to the STA Board to issue letters of support for the Solano projects listed above.

Recommendation

Forward a recommendation to the STA Board to issue letters of support for the following member agency projects, which are also captured in the STA Active Transportation Plan:

1. City of Benicia – Military East Sidewalk Gap Closure
2. City of Suisun City – McCoy Creek Phase III
3. City of Vallejo – Vallejo Bluff Trail
4. Unincorporated County of Solano – Benicia Road Complete Streets Project Phase II

Attachments – Complete Streets Checklists:

- A. City of Benicia – Military East Sidewalk Gap Closure
- B. City of Suisun City – McCoy Creek Phase III
- C. City of Vallejo – Vallejo Bluff Trail
- D. Unincorporated County of Solano – Benicia Road Complete Streets Project Phase II

Contact Name	Derek Linsley
Email Address	dlinsley@ci.benicia.ca.us
Contact Phone Number	707-7464237
City/Jurisdiction/Agency (If your option is not listed, select "Other")	Benicia
County	Solano
Is your project seeking regional discretionary funds or an endorsement?	Regional discretionary funding
Please include the name of the regional discretionary funding program that this project is seeking.	RM3 SR2TBT Program
Project Name/Title	Military East Sidewalk Gap Closure
Project Area/ Location	Military East in Benicia
Project Area Map (Attach if applicable) Please save the file with the project name and the jurisdiction submitting checklist. Add the name of the file being uploaded below. Then Click Here to upload your file.	city of benicia - military east sidewalk gap closure - map.pdf
Project Description (2000 character limit). You may also attach additional project documents, cross sections, plan views or other supporting materials.	Military East is a principal artery within the City of Benicia connecting the Downtown area with the east side of town. Consequently, multiple transit routes use Military East including three SolTrans bus routes, and many schools and community gathering places are located around the street. Military East forms part of both the Bay Trail and the Bay Area Ridge Trail. Despite this street's position as an important transportation corridor within the City, the street is not welcoming to alternative modes of transportation, specifically walking. Within the 4,375 feet between East 2nd Street and Adams Street there are 36 non-compliant or non-existent curb ramps, 14 missing crosswalks, 1,420 feet of degraded asphalt concrete sidewalks, 250 feet of missing sidewalks, and 19 utility poles that are impassable for somebody in a wheelchair or mobility

scooter. This project improves pedestrian access to better serve the mobility needs of children, older adults, and people with disabilities. This will be accomplished by removing and replacing non-compliant curbs and curb ramps with ramps that follow ADA guidelines, encouraging safe street crossings by installing new crosswalks, relocating utility poles to maintain acceptable clearance along the sidewalks for all pedestrians, replacing degraded asphalt concrete sidewalks with portland cement concrete sidewalks, and installing new sidewalks where none presently exist. This project is anticipated to encourage active transportation along this important corridor, allowing more people to connect to the Bay Trail, transportation networks, and community gathering places.

Please choose the project phase(s). PE

Do you think your project qualifies for a Statement of Exception? No

Topic: Bicycle, Pedestrian and Transit Planning

Does the project implement relevant plans, or other locally adopted recommendations? Yes

Please provide details on plan recommendations affecting the project area, if any, with Plan adoption date. If the project is inconsistent with adopted plans, please provide explanation.

The project is consistent with the goals in the Solano Countywide Active Transportation Plan (adopted 2020), specifically Goals 1 (Access), 3 (Health and Safety), 4 (Quality of Life), and 5 (Environmental Stewardship). Furthermore, the most recent City of Benicia Capital Improvement Program (adopted May 28, 2019) emphasizes City-wide removal and replacement of non-compliant ADA curb ramps throughout the City. The City of Benicia General Plan (adopted Jun 15, 1999), highlights pedestrian enhancements and safety as priority in all development. The project is not inconsistent with any adopted plans.

Does the project area contain segments of the regional Active Transportation (AT) Network? [See MTC's AT Network map here] Yes

If yes, describe the how project adheres to the National Association of City Transportation Official's (NATCO's) "Designing for All Ages & Abilities Contextual

The project follows the guidelines for pedestrian facilities in the public right-of-way as described in the the Architectural and Transportation Barriers Compliance Board.

Guidance for High-Comfort Bicycle Facilities" and/or the Architectural and Transportation Barriers Compliance Board's "Accessibility Guidelines for Pedestrian Facilities in the Public Right-of-Way."

Is the the project on a known High Injury Network (HIN) or has a local traffic safety analysis found a high incidence of bicyclist/pedestrian-involved crashes within the project area?

No

Please summarize the traffic safety conditions and describe the project's traffic safety measures. The Bay Area Vision Zero System may be a helpful resource.

The project is anticipated to improve pedestrian safety along Military East. Presently, there are 14 locations at crossing points along this street that do not have a crosswalk. Notably, a 2,300 foot long street between East 5th Street and Adams Street has no crosswalks across Military East. Thus, pedestrians either need to make an unreasonable detour or risk crossing one of Benicia's busiest streets without a crosswalk. Since 2012, Military east has 36 recorded traffic accidents. Of the 36 accidents, 8 involved pedestrians

Does the the project seek to improve conditions for people biking, walking and/or rolling? If the project includes a bikeway, was a Level of Traffic Stress (LTS), or similar user experience analysis conducted?

Yes

Describe how project seeks to provide low-stress transportation facilities or reduce a facility's LTS.

The purpose of this project is to improve conditions for people walking or rolling on Military East. This will be accomplished by removing and replacing non-compliant curbs and curb ramps with ramps that follow ADA guidelines, encouraging safe street crossings by installing new crosswalks, relocating utility poles to maintain acceptable clearance along the sidewalks for all pedestrians, replacing degraded asphalt concrete sidewalks with portland cement concrete sidewalks, and installing new sidewalks where none presently exist. This project is anticipated to encourage active transportation along this important corridor, allowing more people to connect to the Bay Trail, transportation networks, and community gathering places.

A. Are there existing public transit facilities (stop or station) in the project area?

Yes

If yes, list transit facilities (stop, station, or route) and all affected agencies.

SolTrans bus routes Y, 15, and 17 all use Military East (see project map). Although no official stops are located on Military East, Routes 15 and 17 will stop at any safe intersection along the routes to drop off and pick up customers who are clearly visible to the driver.

B. Have all potentially affected transit agencies had the opportunity to review this project? If yes, please save the email from transit operator(s) below.

No

C: Is there a MTC Mobility Hub (map) within the project area?

No

If applicable, please describe the pedestrian focused improvements and cite the design standards used (links to standards are not needed).

The Military East Sidewalk Gap Closure Project is strictly a pedestrian improvement project. Improvements include replacing sidewalks in disrepair with new PCC sidewalks, relocating utility poles to achieve ADA-compliant clearance, installing 250' of new sidewalk so pedestrians do not need to walk in the street, and curb ramp upgrades. Design will follow ADA accessibility standards, CalTrans accessible curb ramp details, and CA MUTCD for any in-street upgrades such as crosswalk installation.

Will the project improve active transportation in an Equity Priority Community (EPC)?

No

Has a local (city is preferred and county is an option) Bicycle and Pedestrian Advisory Commission (BPAC) reviewed this Checklist? The Checklist will begin MTC review once the BPAC meeting has occurred.

The submission of this checklist will be reviewed by the BPAC. This option exists to use this CS Checklist submission (pdf emailed to you) for the BPAC review.

Please provide the meeting date(s). BPAC meeting date should occur before the grant funding request

9/30/2024

application or endorsement is submitted.

Compliance and Exemption

Please check below if Yes. If no, complete the Statement of Exception. If Yes, this Checklist is complete and the rest of the form can be skipped. If No, please fill out the Statement of Exception section.

Yes

Has a local (city or county) Bicycle and Pedestrian Advisory Commission (BPAC) reviewed this Checklist? The CS Checklist will begin review once the BPAC meeting notes are included in this form.

The Checklist is being submitted to send to the BPAC for review.

Please provide the meeting date(s).

9/30/2024

1. The affected roadway is legally prohibited for use by bicyclists and/or pedestrians. Yes/No?

No

2. The costs of providing Complete Streets improvements are excessively disproportionate to the need or probable use (defined as more than 20 percent for Complete Streets elements of the total project cost). Yes/No?

No

3. There is a documented Alternative Plan to implement Complete Streets and/or on a nearby parallel route. Yes/No?

No

4. Conditions exist in which policy

No

**requirements may not
be able to be met, such
as fire and safety
specifications, spatial
conflicts on the roadway
with transit or
environmental
concerns, defined as
abutting conservation
land or severe
topological constraints.
Yes/No?**

This PDF is generated with the [Google Forms Notification](#) add-on.

To generate customized PDFs from Google Forms, download [Document Studio](#) ([video demo](#)).

These messages are not added in the [premium version](#).



DATE: 5/13/2024

DRAWN BY: DPL

Military East Sidewalk Gap Closure Project Project No. 24-13



MTC Complete Streets Checklist

Regional Measure (RM3) Safe Routes to Transit/Bay Trail
City of Suisun City – McCoy Creek Trail Phase 3 Project

Q: Is your project seeking regional discretionary funds or an endorsement?

A: Regional discretionary funding.

Project Information: The City aims to provide a safe, beautiful, and equitable transportation option that benefits all community members. The McCoy Creek Trail is a multi-phase Class I bikeway project designed to offer a scenic, accessible alternative to motor vehicle travel. Phase 1, completed successfully in 2008, is located at the southern end of the project. Recently, Phase 2 was constructed to the north and west of Phase 1. The requested RM3 funds will facilitate the proposed Phase 3, extending Phase 2 further to the west and north. This extension will connect to the Central County bikeway, enhancing regional connectivity. Phase 3 will also link to existing bicycle lanes along the busy Sunset Avenue and Railroad Avenue.

The project will include the construction of 2,800 linear feet of 10-foot wide concrete trail, curb ramps, streetlights, three fitness stations, two interpretive signs, one shade sail, 700 linear feet of metal fencing, and a prefabricated bridge.

Choose project phases: PE, CON and O&M. See attached cost estimate.

Project Supporting Material: Location Map, School Zone Maps, and Equity Priority Map

Project Area/Location: Along the north side of Laurel Creek from Blossom Avenue to Sunset Avenue (east-west alignment), and along the east side of Laurel Creek to Railroad Avenue (north-south alignment). See attached location map.

Q: Do you think your project qualifies for a Statement of Exception?

A: Yes.

Statement of Exception

1. The affected roadway is legally prohibited for use by bicyclists and/or pedestrians. Yes/No?
A: Yes. Currently, the project location is undeveloped and is utilized only as a maintenance road for use solely by City maintenance crew. The public is currently prohibited from entering the project location.
2. If yes, please cite language and agency citing prohibited use.
A: Existing posted signs have the following message: NO TRESPASSING – NO CAMPING – NO DUMPING – VIOLATORS WILL BE PROSECUTED.
3. The costs of providing Complete Streets improvements are excessively disproportionate to the need or probable use (defined as more than 20 percent for Complete Streets elements of the total project cost). Yes/No?
A: Yes.

4. If claimed, the agency must include proportionate alternatives and still provide safe accommodation of people biking, walking and rolling. Please share how that will be executed here.

A: The alternative is to utilize surrounding streets that have bike lanes and sidewalks.

5. There is a documented Alternative Plan to implement Complete Streets and/or on a nearby parallel route. Yes/No?

A: The only streets parallel to the Laurel Creek are residential streets that do not have the adequate width to accommodate a Class I bikeway. Furthermore, the residential street segments are short and are not continuous.

6. Conditions exist in which policy requirements may not be able to be met, such as fire and safety specifications, spatial conflicts on the roadway with transit or environmental concerns, defined as abutting conservation land or severe topological constraints. Yes/No?

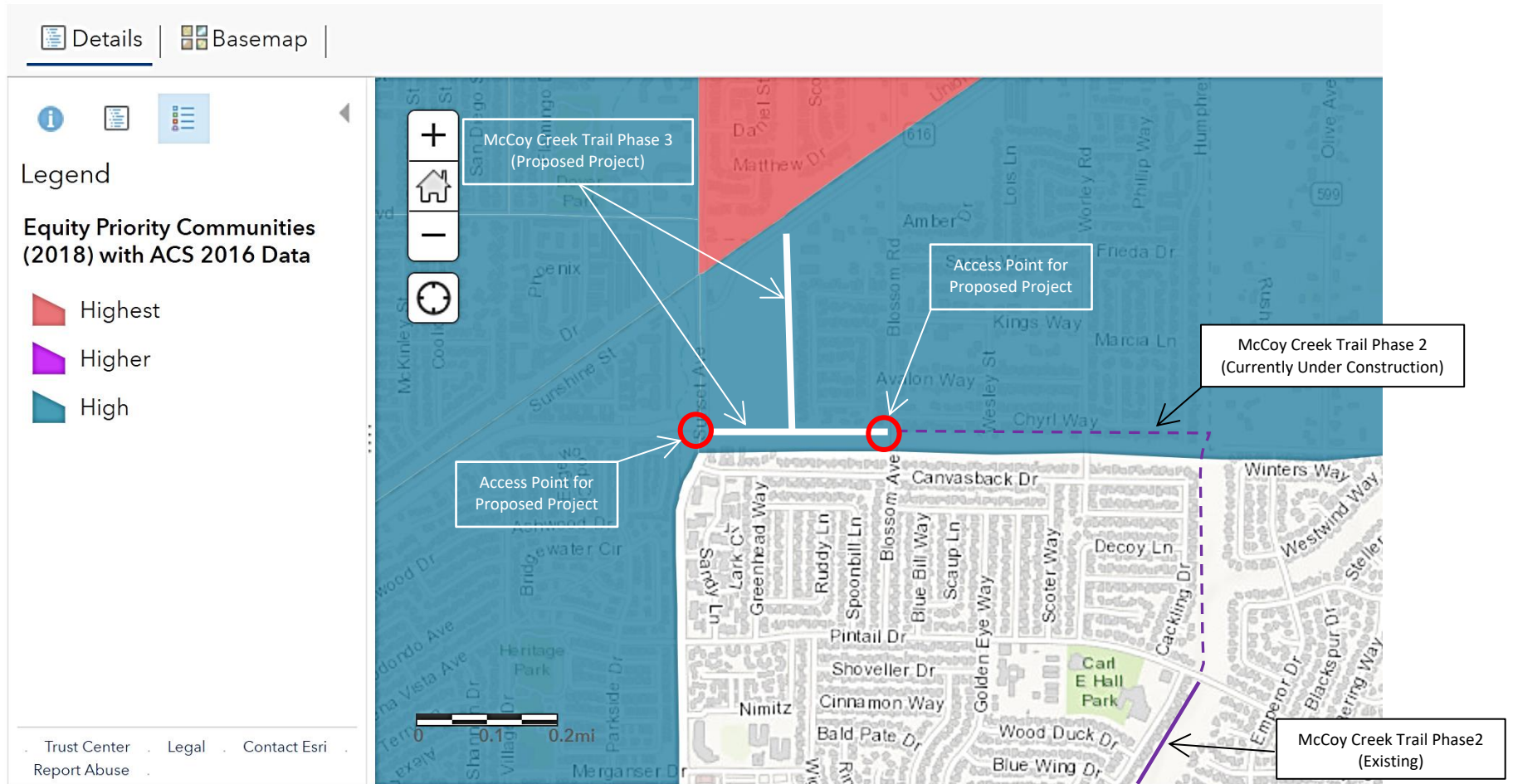
A: Yes, there is an existing field condition that prevents compliance with policy requirements. This location is situated along a creek, making it unsuitable for motor vehicle access due to inadequate right-of-way and environmental concerns.

LOCATION MAP
McCoy Creek Trail Phase 3 Improvements Project



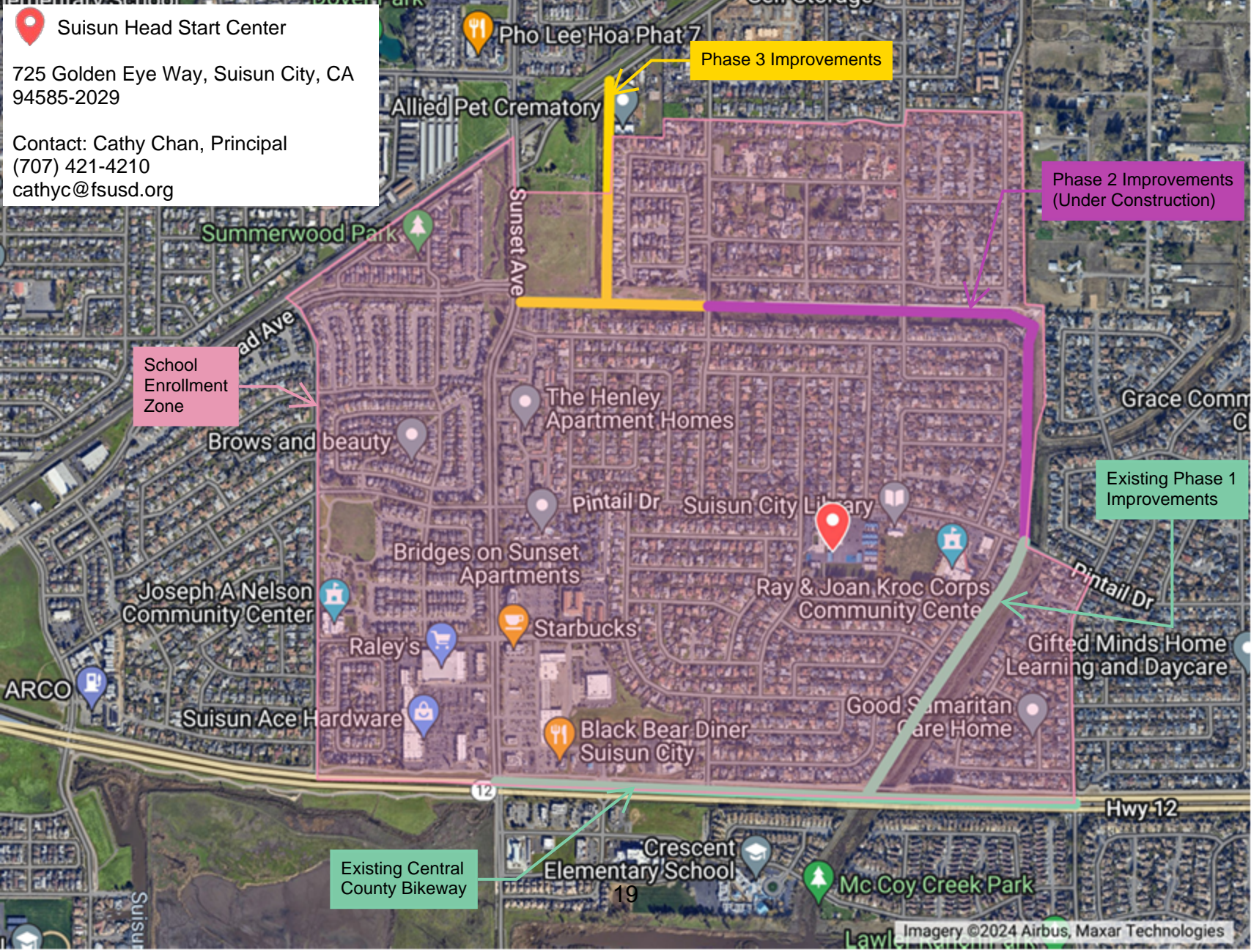
McCoy Creek Trail Phase 3 Improvements Project MTC Equity Priority Communities Map

ArcGIS ▾ MTC Equity Priority Communities in 2018 (ACS 2012 - 2016)



Suisun Head Start Center
725 Golden Eye Way, Suisun City, CA
94585-2029

Contact: Cathy Chan, Principal
(707) 421-4210
cathyc@fsusd.org



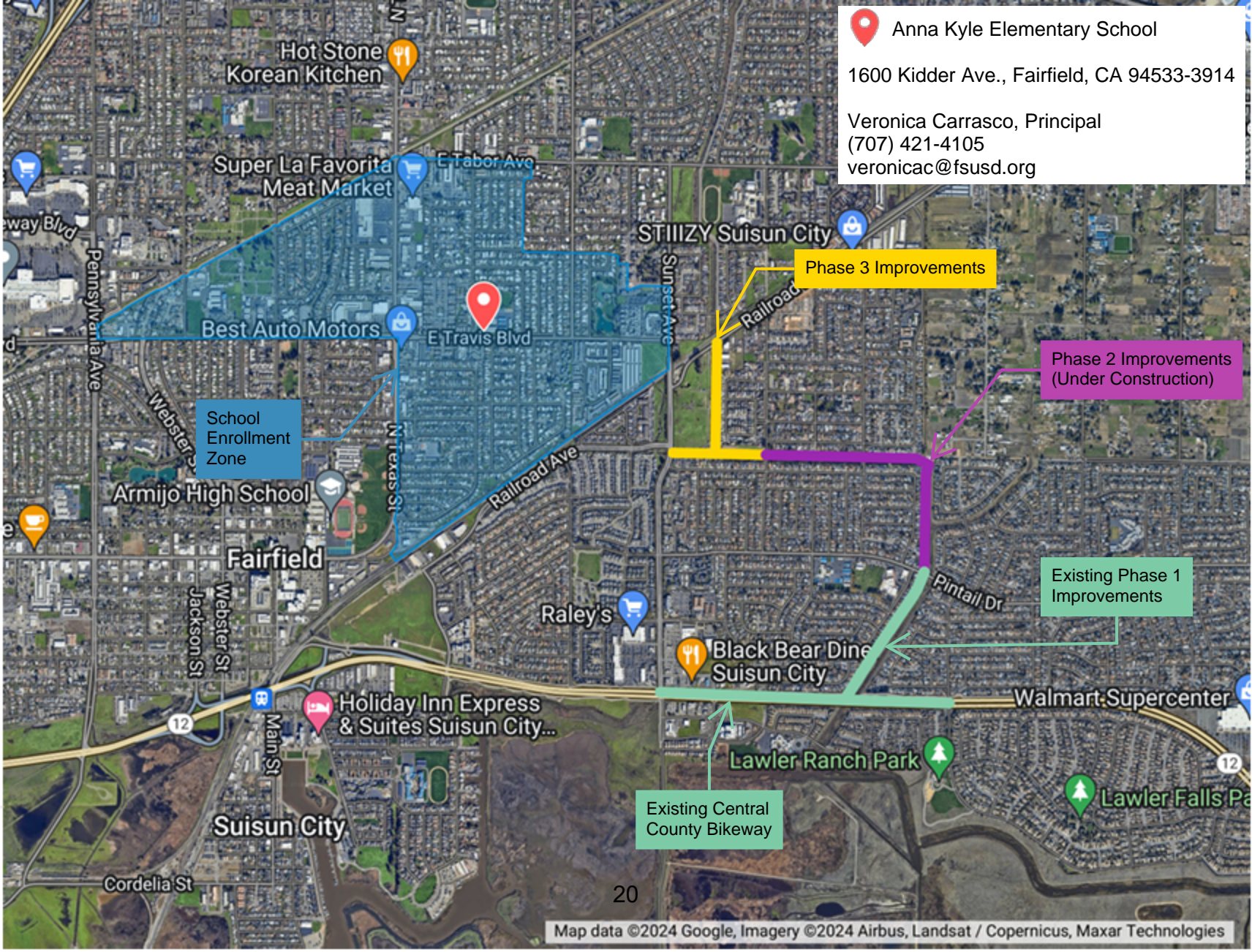
Phase 3 Improvements


Phase 2 Improvements
(Under Construction)

School Enrollment
Zone

Existing Phase 1
Improvements

Existing Central
County Bikeway



 Anna Kyle Elementary School
1600 Kidder Ave., Fairfield, CA 94533-3914
Veronica Carrasco, Principal
(707) 421-4105
veronicac@fsusd.org


School Enrollment Zone

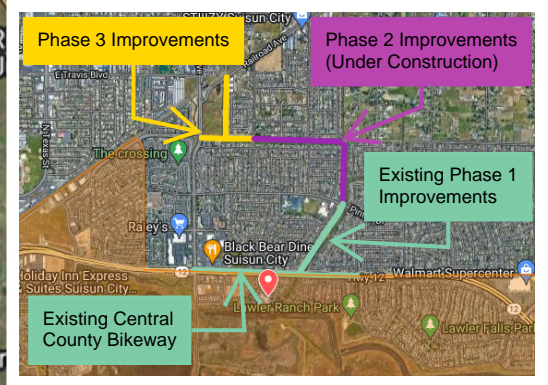
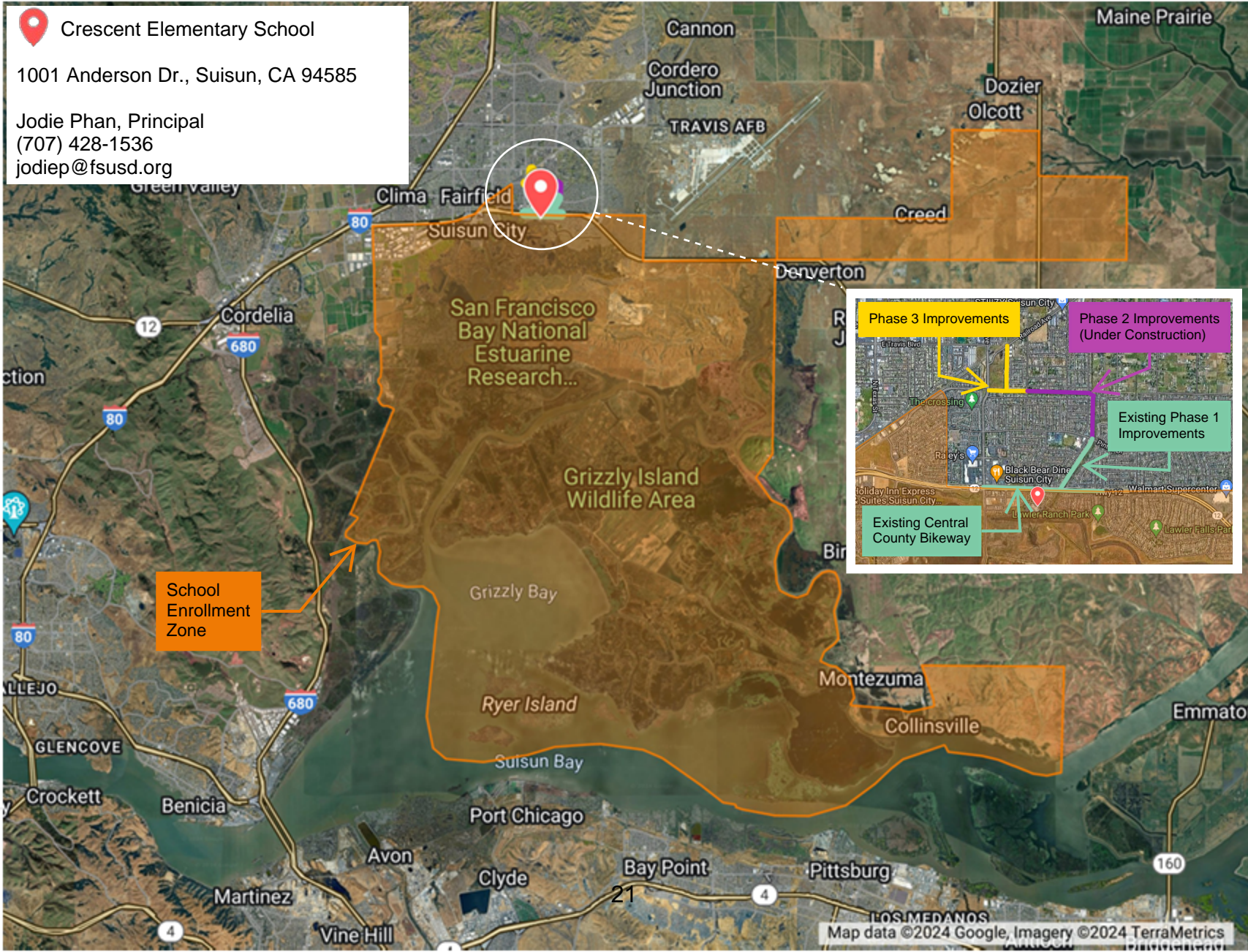
Phase 3 Improvements

Phase 2 Improvements (Under Construction)


Existing Phase 1 Improvements

Existing Central County Bikeway

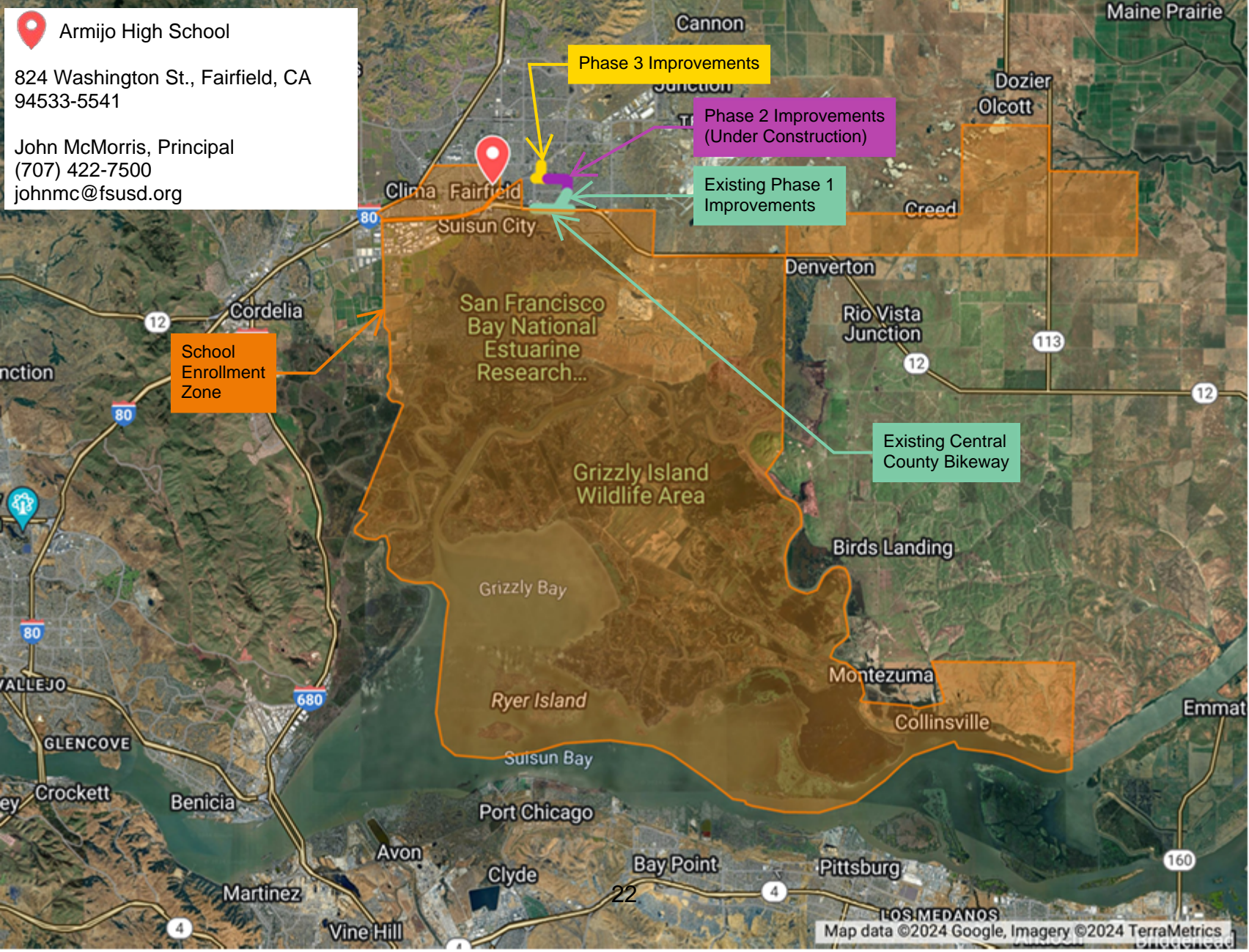
 **Crescent Elementary School**
1001 Anderson Dr., Suisun, CA 94585
Jodie Phan, Principal
(707) 428-1536
jodiep@fsusd.org



School Enrollment Zone

 Armijo High School
824 Washington St., Fairfield, CA
94533-5541

John McMorris, Principal
(707) 422-7500
johnmc@fsusd.org




Phase 3 Improvements

Phase 2 Improvements
(Under Construction)

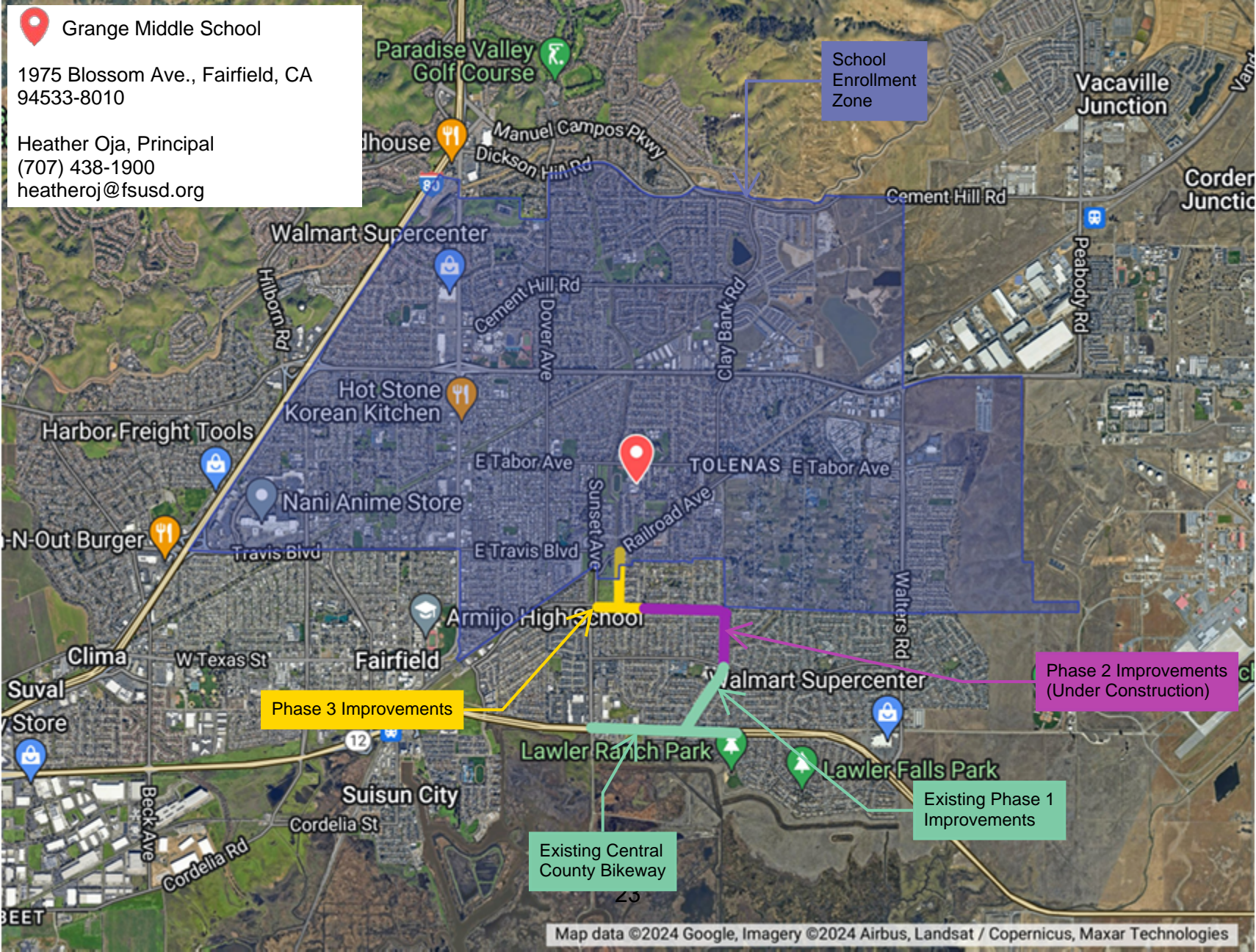
Existing Phase 1
Improvements

School
Enrollment
Zone

Existing Central
County Bikeway

 Grange Middle School
1975 Blossom Ave., Fairfield, CA
94533-8010

Heather Oja, Principal
(707) 438-1900
heatheroj@fsusd.org



Existing Central
County Bikeway

Contact Name	Mark Helmbrecht
Email Address	mark.helmbrecht@cityofvallejo.net
Contact Phone Number	707-645-2601
City/Jurisdiction/Agency (If your option is not listed, select "Other")	Vallejo
County	Solano
Is your project seeking regional discretionary funds or an endorsement?	Regional discretionary funding
Please include the name of the regional discretionary funding program that this project is seeking.	SR2TBT
Project Name/Title	Vallejo Bluff Trail
Project Area/ Location	South Vallejo along Caltrans SR29, under I80 and along the bluff above the Carquinez Bridge and Straight.
Project Area Map (Attach if applicable) Please save the file with the project name and the jurisdiction submitting checklist. Add the name of the file being uploaded below. Then Click Here to upload your file.	CityofVallejo Bluff Trail Location Map
Project Description (2000 character limit). You may also attach additional project documents, cross sections, plan views or other supporting materials.	<p>Complete the engineering, obtain Caltrans Encroachment permit, and construct 1.97 mile Class I, paved Vallejo Bluff Trail. The Bluff Trail is built along the edge of Caltrans SR29 starting at the intersection of SR29/Sequoia Ave./Cal Maritime Drive west of I80 and extends under I80 going east up to the intersection of Sequoia Ave. and the I80 EB off-ramp near Lincoln Road East. A second leg of the trail will extend up the bluff slope above I80 and the Carquinez Bridge connecting into Vallejo's Glen Cove neighborhood at Clearview Drive.</p> <p>The Vallejo Bluff Trail has been an important objective of the City, STA, and regional trail organizations for many years. The project will close a gap in the Bay Trail, Ridge Trail, CA Delta Trail, and Carquinez Strait Loop Trail. The City has engaged</p>

Caltrans on this effort for many year as the bulk of the trail will be constructed in Caltrans ROW. The City recently obtained PID approval from Caltrans and is starting the PA&ED approval phase as we pursue an Encroachment permit to construct the project. This project was coordinated with Caltrans recent replacement of the I80 bridge over SR29 and Caltrans has benched a section under the bridge to accommodate the trail alignment for future construction.

To date, funding for development of the public engagement process, preliminary engineering (~30% design), environmental document (IS/MND completed and filed with Solano County), and PSR/PDS submittal to Caltrans for PID approval have been funded by City budget and a series of three grants from ABAG Bay Trail and the Coastal Conservancy (~\$550k).

Please choose the project phase(s).
PE
ROW
CON
O&M

Project Supporting Material (Upload if applicable) Please save the file with the project name and the jurisdiction submitting checklist. Add the name of the file being uploaded below. Then Click Here to upload your file.

Vallejo Bluff Trail PSR/PDS

Do you think your project qualifies for a Statement of Exception?
No

Topic: Bicycle, Pedestrian and Transit Planning

Does the project implement relevant plans, or other locally adopted recommendations?
Yes

Please provide details on plan recommendations affecting the project area, if any, with Plan adoption date. If the project is inconsistent with adopted plans, please provide explanation.

The Vallejo Bluff Trail is a high priority project in the Solano Active Transportation Plan (May 2020) and also Vallejo's Propel Vallejo General Plan 2040 (adopted 8/29/17)

Does the project area contain segments of the regional Active Transportation (AT) Network? [See MTC's AT Network map here]

Yes

If yes, describe the how project adheres to the National Association of City Transportation Official's (NATCO's) "Designing for All Ages & Abilities Contextual Guidance for High-Comfort Bicycle Facilities" and/or the Architectural and Transportation Barriers Compliance Board's "Accessibility Guidelines for Pedestrian Facilities in the Public Right-of-Way."

The Vallejo Bluff Trail is being designed to meet Class I multi-use trail standards providing a fully accessible off-street bike/ped facility for all ages and abilities.

Is the the project on a known High Injury Network (HIN) or has a local traffic safety analysis found a high incidence of bicyclist/ pedestrian-involved crashes within the project area?

No

Please summarize the traffic safety conditions and describe the project's traffic safety measures. The Bay Area Vision Zero System may be a helpful resource.

The Vallejo Bluff Trail will be a Class I multi-use trail fully separated from adjacent roadway. The trail connects through Caltrans ROW which is currently undeveloped across the Interstate 80 corridor which is current a full barrier to bike and pedestrian travel between south Vallejo and the Vallejo's Glen Cove Neighborhood or continuing east along the Carquinez Street to Benicia. Current bike/pedestrian access between these areas of Vallejo involves using a completely alternative route through other parts of Vallejo such as Sonoma Blvd./SR29, Magazine Street including the overpass of I80, old Glen Cove Road, and then the Glen Cove Parkway. Most of these streets do not have any cycling facilities and incomplete pedestrian facilities. This detour is up to 3.5 miles longer (5.5 miles v 2 miles on the Bluff Trail) and would be all on-street adjacent to traffic.

Does the the project seek to improve conditions for people

No

biking, walking and/or rolling? If the project includes a bikeway, was a Level of Traffic Stress (LTS), or similar user experience analysis conducted?

Describe how project seeks to provide low-stress transportation facilities or reduce a facility's LTS.

The project will deliver an off-street Class I multi-use trail through an area that doesn't contain a road and isn't currently accessible. As there is no adjacent roadway, a LTS analysis isn't possible. If an LTS was conducted of the alternative 5.5 mile route that a pedestrian or cyclist would have to take today to get between South Vallejo and Glen Cove neighborhoods, the result would be that the current option is high stress.

A. Are there existing public transit facilities (stop or station) in the project area?

No

If yes, list transit facilities (stop, station, or route) and all affected agencies.

Soltrans has bus routes and stops 1 - 1.5 blocks away from each end of the Vallejo Bluff Trail, but the project doesn't directly serve these stops and the construction of this project doesn't impact any existing transit services.

B. Have all potentially affected transit agencies had the opportunity to review this project? If yes, please save the email from transit operator(s) below.

No

C: Is there a MTC Mobility Hub (map) within the project area?

No

If applicable, please describe the pedestrian focused improvements and cite the design standards used (links to standards are not needed).

This project will construct a MUTCD Class I Multi-use trail that is fully accessible for pedestrians and separated from any adjacent roadway.

If applicable, please provide the class designation for bikeways included in the project and cite the design standards used.

This project will construct a MUTCD Class I Multi-use trail that is fully accessible for pedestrians and separated from any adjacent roadway.

Will the project improve active transportation in an Equity Priority Community (EPC)?

Yes

Please list census tracts that are designated as EPCs and affected by this project.

250601 and 250701 directly with several others adjacent and beyond these having new active transportation access.

Has a local (city is preferred and county is an option) Bicycle and Pedestrian Advisory Commission (BPAC) reviewed this Checklist? The Checklist will begin MTC review once the BPAC meeting has occurred.

The submission of this checklist will be reviewed by the BPAC. This option exists to use this CS Checklist submission (pdf emailed to you) for the BPAC review.

Please provide the meeting date(s). BPAC meeting date should occur before the grant funding request application or endorsement is submitted.

STA has committed to routing the form to BPAC members for review independent of a scheduled meeting.

Please provide a summary of meeting comments. If meeting date hasn't occurred yet, please share BPAC meeting comments here.

To be provided, likely by STA

Compliance and Exemption

Please check below if Yes. If no, complete the Statement of Exception. If Yes, this Checklist is complete and the rest of the form can be skipped. If No, please fill out the Statement of Exception section.

Yes

Has a local (city or county) Bicycle and Pedestrian Advisory Commission (BPAC) reviewed this Checklist?

The Checklist is being submitted to send to the BPAC for review.

The CS Checklist will begin review once the BPAC meeting notes are included in this form.

Please provide the meeting date(s).

STA to route to committee members independently of a scheduled meeting.

Please provide a summary of comments/discussion.

Will do

1. The affected roadway is legally prohibited for use by bicyclists and/or pedestrians. Yes/No?

No

2. The costs of providing Complete Streets improvements are excessively disproportionate to the need or probable use (defined as more than 20 percent for Complete Streets elements of the total project cost). Yes/No?

No

3. There is a documented Alternative Plan to implement Complete Streets and/or on a nearby parallel route. Yes/No?

No

4. Conditions exist in which policy requirements may not be able to be met, such as fire and safety specifications, spatial conflicts on the roadway with transit or environmental concerns, defined as abutting conservation land or severe topological constraints. Yes/No?

No

This PDF is generated with the [Google Forms Notification](#) add-on.

To generate customized PDFs from Google Forms, download [Document Studio](#) ([video demo](#)).

These messages are not added in the [premium version](#).

Contact Name	Matt Tuggle
Email Address	mrtuggle@solanocounty.com
Contact Phone Number	7077846072
City/Jurisdiction/Agency (If your option is not listed, select "Other")	Solano County
County	Solano
Is your project seeking regional discretionary funds or an endorsement?	Regional discretionary funding
Please include the name of the regional discretionary funding program that this project is seeking.	Regional Measure 3
Project Name/Title	Benicia Road Complete Streets Project Phase 2
Project Area/ Location	On Benicia Road, in the City of Vallejo between 9th Street and Starr Ave.
Project Area Map (Attach if applicable) Please save the file with the project name and the jurisdiction submitting checklist. Add the name of the file being uploaded below. Then Click Here to upload your file.	Benicia Rd Complete Streets Project_Solano County_Project Map
Project Description (2000 character limit). You may also attach additional project documents, cross sections, plan views or other supporting materials.	<p>The Benicia Road Complete Streets Project provides a critical link that integrates future improvements in the bicycle network, pedestrian network, and access to public transit. The project is in a disadvantaged, equity priority community and needs upgrading for connectivity and safety.</p> <p>Benicia Road is a four-lane roadway in a mixed-use community of residents and businesses. The current sidewalks are dilapidated, utility poles and signage block passage, curb cuts are too steep, and pathways do not have truncated domes for the visually impaired. The aged bus stops are unprotected from weather having just a pole with attached seat for a single person to wait for the bus.</p> <p>Solano County is proposing a road diet for Benicia Road.</p>

Reducing the number of travel lanes will provide enough room to widen the sidewalks, stripe for street parking and Class II Bike Lanes, install bulb-outs at the intersections to shorten crossing distances, median islands, newly striped crosswalks, bus stop shelters with benches and native landscaping. Phase 2 is currently in the design phase and has completed CEQA (CE). Solano County has partnered with the City of Vallejo to complete intersection improvements at 9th Street as requested by area residents through the community outreach process. Using local and regional funding, Phase 1 was completed which was overwhelmingly supported by the residents and businesses that surround Benicia Road. Solano County needs regional, State, and Federal funding to construct the second phase of this corridor and complete the corridor project for the disadvantaged, equity priority community.

Please choose the project phase(s).

PE
ENV
ROW
CON

Project Supporting Material (Upload if applicable) Please save the file with the project name and the jurisdiction submitting checklist. Add the name of the file being uploaded below. Then [Click Here](#) to upload your file.

Benicia Rd Complete Streets Project_Solano County_Plans

Do you think your project qualifies for a Statement of Exception?

No

Topic: Bicycle, Pedestrian and Transit Planning

Does the project implement relevant plans, or other locally adopted recommendations?

Yes

Please provide details on plan recommendations affecting the project area, if any, with Plan adoption date. If the project is inconsistent with adopted plans, please provide explanation.

Solano County Active Transportation Plan Projects List Amendment 2022. Adopted May 11, 2022. Project is consistent with the adopted plan to install class II bike lanes and sidewalk improvements.

Does the project area contain segments of the regional Active Transportation (AT) Network? [See MTC's AT Network map here]

Yes

If yes, describe the how project adheres to the National Association of City Transportation Official's (NATCO's) "Designing for All Ages & Abilities Contextual Guidance for High-Comfort Bicycle Facilities" and/or the Architectural and Transportation Barriers Compliance Board's "Accessibility Guidelines for Pedestrian Facilities in the Public Right-of-Way."

Upon project completion Benicia Roads speed limit will be reduced to 25 mph per the CAMUTCD and the California Vehicle Code. There will only be a single lane of travel in each direction for motor vehicles and class II bike lanes will be striped with a buffer along portions of Benicia Road.

Is the the project on a known High Injury Network (HIN) or has a local traffic safety analysis found a high incidence of bicyclist/ pedestrian-involved crashes within the project area?

Yes

Please summarize the traffic safety conditions and describe the project's traffic safety measures. The Bay Area Vision Zero System may be a helpful resource.

Benicia Road at Ream St. is a high injury intersection. Benicia Road is currently a 61.5' wide 4 lane street, with on-street parking. Crossing this road on foot is hazardous. We will institute a road diet, reduce the traveled lanes to 2 with dedicated bike lanes. Pedestrian crosswalks will have bulb-outs to shorten the crossing distance. The bulb-outs will have planter areas discouraging illegal crossing at Ream St. Pedestrians will be dedicated to cross at either Starr or Lemon Streets. The lengthy crossing at 9th street will get a median refuge island for pedestrians. Crosswalks at intersections will have thermoplastic striping to increase visibility making it safer for pedestrians to cross Benicia Road.

Does the the project seek to improve conditions for people biking, walking and/or rolling? If the project

Yes

includes a bikeway, was a Level of Traffic Stress (LTS), or similar user experience analysis conducted?

Describe how project seeks to provide low-stress transportation facilities or reduce a facility's LTS.

Benicia Road will receive a road diet providing room for designated bike lanes. The speed limit will also be reduced to 25 mph as this area warrants a residential/business district per the California Vehicle Code.

A. Are there existing public transit facilities (stop or station) in the project area?

Yes

If yes, list transit facilities (stop, station, or route) and all affected agencies.

Route 8, SolTrans has 4 stops on Benicia Road. Contact has been made, they are in support of the project and provided a letter.

B. Have all potentially affected transit agencies had the opportunity to review this project? If yes, please save the email from transit operator(s) below.

Yes

Please save the file with the project name and the jurisdiction submitting checklist. Add the name of the file being uploaded below. Then Click Here to upload your file.

Benicia Rd Complete Streets Project_Solano County_SolTrans Support

C: Is there a MTC Mobility Hub (map) within the project area?

Yes

If yes, please describe outreach to mobility providers, and the project's Hub-supportive elements. Please view the Mobility Hubs Playbook Play 1.

The project area is adjacent to the Curtola Parkway Transit Center and regional carpool lot. Outreach and discussions were coordinated with SolTrans who provides the local route transit service as well as the regional service at the adjacent MTC mobility hub. SolTrans supports the project because it upgrades the existing transit stops with shelters and facilitates active transportation use to the transit stops and local mobility hub.

If applicable, please describe the pedestrian

Road Diet, we used FHWA low-cost proven safety countermeasure road diet guide for design.

focused improvements and cite the design standards used (links to standards are not needed).

If applicable, please provide the class designation for bikeways included in the project and cite the design standards used.

Class II Bike Lane, we used the proven safety countermeasures bikeway selection guide by FHWA for design.

Will the project improve active transportation in an Equity Priority Community (EPC)?

Yes

Please list census tracts that are designated as EPCs and affected by this project.

Census Tract 2511

Has a local (city is preferred and county is an option) Bicycle and Pedestrian Advisory Commission (BPAC) reviewed this Checklist? The Checklist will begin MTC review once the BPAC meeting has occurred.

Yes

Please provide the meeting date(s). BPAC meeting date should occur before the grant funding request application or endorsement is submitted.

We provided a presentation at the joint BAC & PAC on July 3rd, 2021. Upon submission of this updated checklist Solano County will provide a copy to the STA for circulation and review by the BAC & PAC as an update.

Please provide a summary of meeting comments. If meeting date hasn't occurred yet, please share BPAC meeting comments here.

Bob Berman from PAC made motion to support STA's recommendation of dividing funds to the 4 projects in ATP. Motion was second by Teresa Booth, motion passes with one opposed by Joseph Green-Heffern. Mike Segala from BAC made motion to fund all 5 projects, 125k for City of Benicia, 50k for City of Dixon, 100k for Solano County, 31k for Suisun City, and 100k for City of Vallejo. Jodie Stueve second motion, and passed unanimously. Mr. Guerrero noted the difference of opinions from both committees and will bring to

TAC and the Board next month.
We were awarded TDA-3 funding for Phase 1, which is complete.

Compliance and Exemption

Please check below if Yes. If no, complete the Statement of Exception. If Yes, this Checklist is complete and the rest of the form can be skipped. If No, please fill out the Statement of Exception section.

Yes

Has a local (city or county) Bicycle and Pedestrian Advisory Commission (BPAC) reviewed this Checklist? The CS Checklist will begin review once the BPAC meeting notes are included in this form.

Yes

Please provide the meeting date(s).

We provided a presentation at the joint BAC & PAC on July 3rd, 2021. Upon submission of this updated checklist Solano County will provide a copy to the STA for circulation and review by the BAC & PAC as an update.

Please provide a summary of comments/discussion.

Bob Berman from PAC made motion to support STA's recommendation of dividing funds to the 4 projects in ATP. Motion was second by Teresa Booth, motion passes with one opposed by Joseph Green-Heffern. Mike Segala from BAC made motion to fund all 5 projects, 125k for City of Benicia, 50k for City of Dixon, 100k for Solano County, 31k for Suisun City, and 100k for City of Vallejo. Jodie Stueve second motion, and passed unanimously. Mr. Guerrero noted the difference of opinions from both committees and will bring to TAC and the Board next month. We were awarded TDA-3 funding for Phase 1, which is complete.

This PDF is generated with the [Google Forms Notification](#) add-on.

To generate customized PDFs from Google Forms, download [Document Studio](#) ([video demo](#)).

These messages are not added in the [premium version](#).

THIS PAGE INTENTIONALLY LEFT BLANK



DATE: September 27, 2024
TO: STA PAC
FROM: Dulce Jimenez, Assistant Planner
RE: Draft List of Recommended Walks for the Volume II of the Walking Brochure

Background:

The current Top Ten Hikes and Walks Brochure, first developed back in 2017, focused on highlighting recreational walking trails throughout Solano. As part of the 2024 Work Plan, a priority of the PAC is to develop a second volume to the Top Ten Walks and Hikes that focuses on highlighting local neighborhood walks. To support the effort, a PAC Ad Hoc Committee was formed to spearhead the development of a second volume, membership includes Cookie Clark, Joseph Green-Heffern, Teresa Booth, and Michael Hayes.

Since the last PAC meeting in April, the PAC Ad Hoc Committee has identified 16 potential walking routes that should be considered for the second volume. To support the scoring and prioritization of the 16 walking routes, a Walking Score Sheet was developed based on the Theme, Objectives, and Guidelines approved at the PAC meeting held on February 1st.

After the identification of the walking routes, during the months of May – July 2024 the PAC Ad Hoc Committee vetted and scored their assigned walking routes. The PAC Ad Hoc Committee then convened a meeting on July 11th to discuss the scores and develop a recommended list of walking routes for the PAC to review and consider. The score sheets and walking routes being proposed for Volume II are shown in Attachment A.

Discussion:

At the August 1st PAC meeting, members were given a detailed presentation of the process and methodology in the development of a recommended list of walking routes. The PAC committee then were given two months to review and provided comments on the proposed walks, which at this point no additional comments were submitted to STA staff and/or PAC Ad Hoc Committee members.

At the October 3rd PAC meeting, committee members will be taking action on this item, and therefore it is highly recommended for committee members to review the proposed walks and score sheets as shown in Attachment A.

Recommendation:

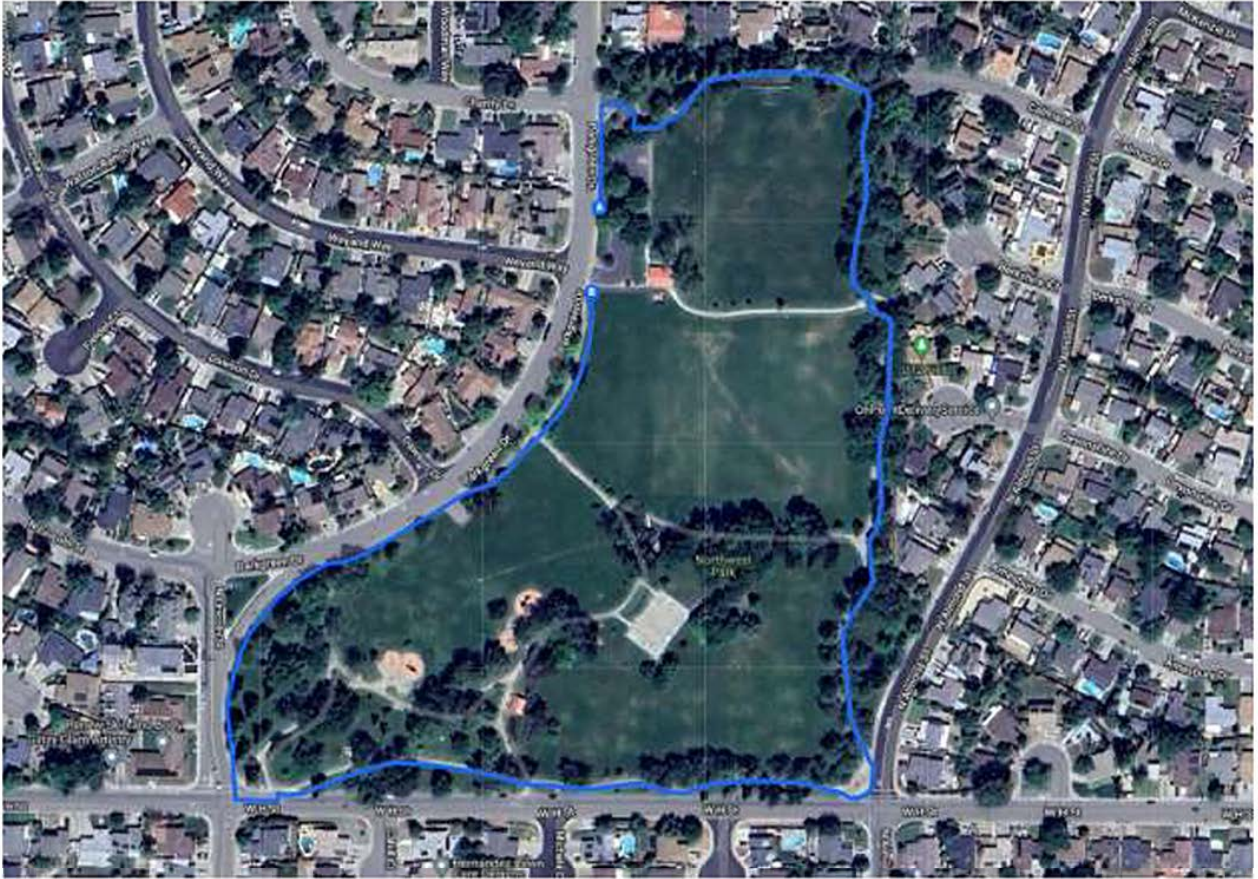
Approve the Draft List of Recommended Walks as identified in Attachment A, with the cava ought walks may be slightly modified by the PAC Ad Hoc and STA on an as needed basis.

Attachment A:

- A. Draft List of Recommended Walks and Walking Score Sheets

DRAFT LIST OF RECOMMENDED WALKS TO BE CONSIDERED FOR THE VOLUME II WALKING BROCHURE

	Name of the Walk	Approximate Starting Address	Lat and Long	Average time to complete walk (minutes)	# of Reviewers	Average Scores (Max 10pts each category)					Should the walk be considered in the Top Ten?	Notes
						Overall Walking Score (40 pts Max)	Key Destinations	Safety and Comfort	Accessibility	Amenities		
DW1	Northwest Park	1023 Park Green Drive, Dixon CA	38.455885, -121.833350	20.5	4	35.3	6.5	9	9.75	10	Y	Popular!
SCW2	McCoy Creek Walk	Start at the Suisun City Library 601 Pintail Dr, Suisun City, CA 94585	38.249153, -122.009979	64	3	35	8	8.6	9.6	8.6	Y	Amenities and access to community resources
DW2	Hall Memorial Park	Hall Memorial Park, 285 East Chestnut St, Dixon, CA 95620	38.441606, -121.817963	16	4	35	7.75	8.75	9	9.5	Y	Access to City Hall
FW1	Cordelia Hills Walk	Cordelia Community Park, 1300 Gold Hill Rd, Fairfield, CA 94534	38.18033, -122.1417	61	3	33	7.6	8.5	8.3	8.3	Y	Include alternative path, for shorter distance
SCW1	Suisun City Waterfront	Start at the Suisun- Fairfield Train Station Park and Ride Lot and/or near by parking closer to the waterfront	38.243322, -122.040902	46.5	2	33	9.5	6.5	8.5	8.5	Y	Walking route will be modified - may focus on waterfront access
VW2	Southside Bikeway	You can either start at the Davis St Parking lot (807-831 Davis St, Vacaville, CA 95687) and/or at Padan Park (by Marshall Road, 38.342373, -121.983399)	38.349005, -121.985393	60	1	33	9	8	7	9	Y	Proposing to start at the Winco Park Lot
VW1	Centennial Park Open Space Preserve	Start at the Centennial Park 505-523 Browns Valley Pkwy, Vacaville, CA 95688	38.372551, -121.974559	60	3	32	8.6	9	6.6	7.6	Y	Nature Access
FW5	Green Valley Loop	Start at the Fairfield Cordelia Library 5050 Business Center Dr, Fairfield, CA 94534	38.217836, -122.144419	120	2	31.5	8	8.5	8	7	Y	The walk has various scenic changes which includes access to vineyards
BW1	Benicia State Recreation Area - Ridge Trail to Glen Cove	At the intersection of Dillon Point Road and Substation Road approaching the Forrest Deaner Native Plant Garden	38.066598, -122.194929	120	1	30	7	9	6	8	Y	The walk was long, great views of the Bay
VallejoW1	Mare Island Historic Loop	Start at the Mare Island Brewing and Co. Coal Shed Brewery Parking Lot (850 Nimitz Ave, Vallejo, CA 94592)	38.103996, -122.273094	60	1	30	7	8	8	7	Y	The starting point is being proposed to be closer to the walk, and minimize walking in areas that are not ADA
FW3	Laurel Creek Park	1050 Cement Hill Road, Fairfield CA, 94533	38.280196, -122.015123	77.5	4	24.5	5.25	6.5	6.25	6.5	Y	Walk will be slightly modified, it will no longer go into the golf course
BW2	Benicia Community Park to Lake Herman	540 Rose Drive, Benicia CA 94510	38.086695, -122.159867	60	1	19.75	6	7	5	7	Y	Access to Lake Herman, short walk
VallejoW2	Mare Island San Pablo Bay Hiking Trail	Start at the Mare Island San Pablo Bay Hiking Trail	38.100961, -122.285234	80	1	12	3	3	2	4	Maybe/Yes	Bird Watching, recreational trail
FW4	Rancho Solano	Parking lot of B. Gale Wilson and/or The Village at Rancho Solano located at 3350 Cherry Hills Ct, Fairfield, CA 94534	38.271278, -122.079804	120	1	25	5	7	7	6	N	Just a residential walk
DW3	Veteran's Park	1300 Valley Glen Drive	38.434648, -121.828369	46	4	23.5	3.75	7.5	7	5.25	N	Just a residential walk
FW2	Linear Park Trail	Solano Community College, adjacent to the soccer field	38.233436, -122.119166	81	3	22.33	5	5.6	6	5.6	N	Walk was very long, better suited as a biking path



PAC AD HOC WALK AUDITS ON

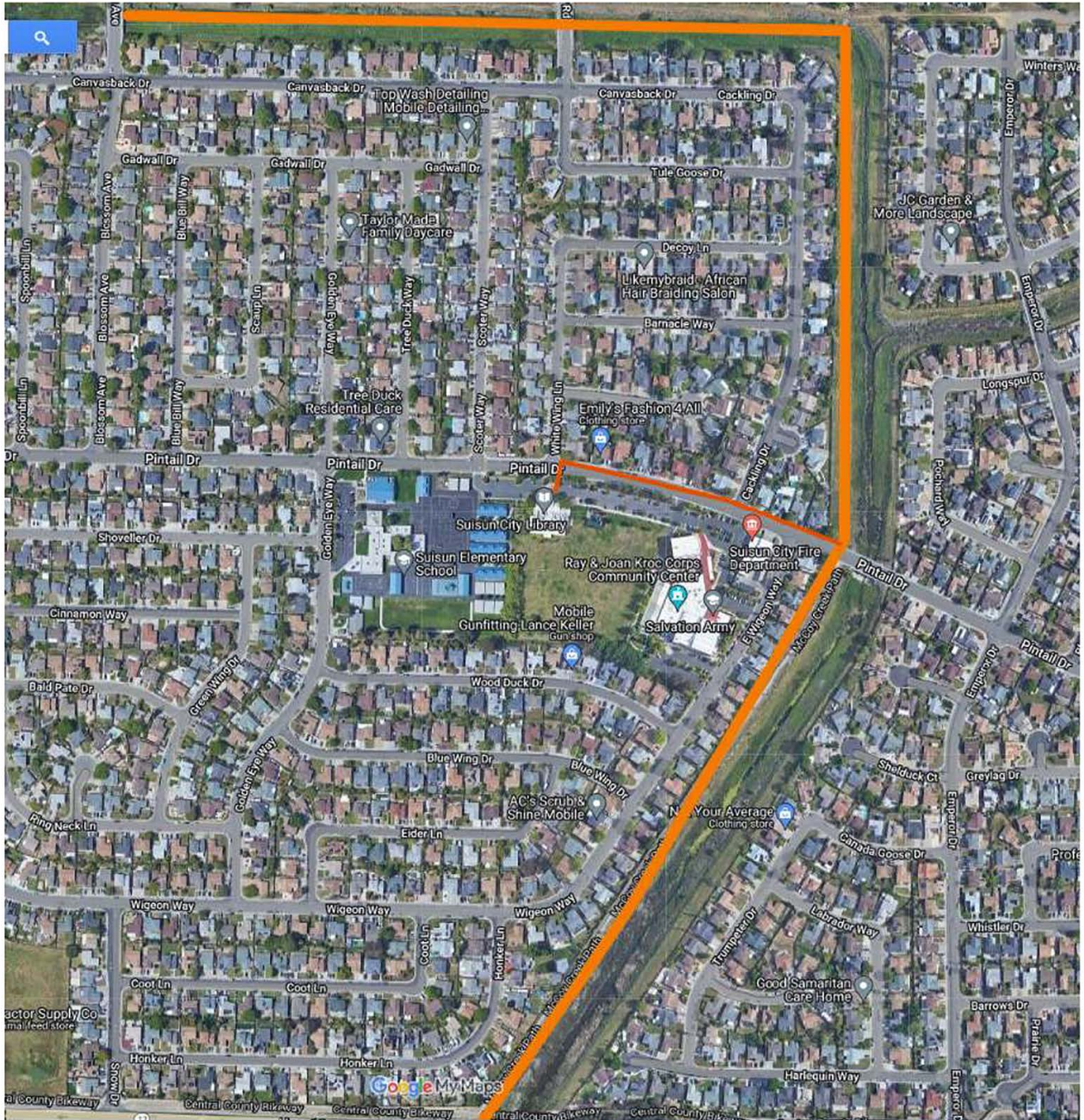
NAME OF REVIEWER	JOE	Michael	Francesca	Andrea
NAME OF THE PROPOSED WALK	Northwest Park	Northwest Park	Northwest Park	North West Park
TOTAL SCORE (Max 40 pts)	36	37	32	36
How did you travel to the location?	Car	Car	Car	Car
If you travel by car, was there a fee to park?	No	No	No	No fee, no time limit
If so how much?				
Was there designated parking?	Yes	Yes	Yes	Yes
Was there ADA parking available?	Yes	Yes	Yes	Yes and 2 ramp
How long did it take to complete the walk?	20 min; 1 mi loop	20 Minute Perimeter	21 minutes perimeter	21 minutes
KEY ITEMS TO ASSESS DURING				
PROXIMITY TO DESTINATIONS				
Is there scenic value to the walk?	No scenic vista, but nicely landscaped, well cared for city park.	Very pleasant	Somewhat. Multiple structures	Some view is artificial
Does the walk pass by/connect to parks? Is so how many?	Walk goes around the perimeter of Northwest Park	It is the park only	Only Northwest park 1	No, only connects to neighborhoods
Is there access to historical sites or city landmarks?	No	Not evident	No	No historical landmarks nearby
Is there access to downtown?	Via city streets/sidewalks about 1 mile away	By car about a mile	Not really	No
Reviewer notes on this section	Lovely stroll around well-appointed city park.	Very easy and pleasant walk, short, good for families. wheel chair accessible	There is recreational elements inside the park, but have to drive to downtown.	Must live in close neighborhood to walk here
How would you rate this walk? (Max 10pts)	6	7, Nice comfortable, pleasant, easy, but not spectacular	5	8
SAFETY AND COMFORT (Max				
Did you feel safe and/or comfortable walking the route?	Yes	Yes	Yes	Yes
Are there posted hours of use?	5am-11pm	5am-11pm	5am-11pm	Yes
Is this a walk you would recommend during daylight and/or night time?	Anytime; in well-lit, apparently safe neighborhood	Yes adequate lights	Both, there are lights surrounding the perimeter walkway.	Early morning is good. There is a lot of trees and places to hide from the sun. Anytime is good
Are there light fixtures available throughout the walk? Do you think the walk will be well light during the night?	Yes - lights throughout, would likely be well-lit after dark as long as the lights are on.	Yes	Yes, mostly on the perimeter. Few lights inside the actual park	Yes. It is hard to tell whether light is bright enough at night. There's light poles throughout the side walk and communal areas.
Is there an adequate buffer between the pedestrian and single passenger vehicles?	Yes - sidewalks separated from streets and parking.	Yes	For most of the walk yes. Other parts along Parkgreen Dr, there is no sidewalk buffer and a thin sidewalk	Not along the road, the sidewalks are very narrow (Parkgreen Dr and W H St)
What is the pavement condition of the walk? Are there areas of concern?	Generally smooth sidewalks; no areas of concern.	Good	Good condition. Few areas of concern	Good, no areas of concern
What is the condition of pedestrian infrastructure? e.g. are the crosswalks in need of restriping, are there bulb-outs at intersections, are there Rectangular Rapid Flashing Beacons and do they work?	No street crossings; parking areas not likely very busy.	N/A	Few bikelanes, one flashing beacon on the corner	Good. Sidewalks are narrow along the roads. Plenty of trash cans throughout. Crosswalks are a little hard to spot. Unable to spot flashing beacons. There's signage along the perimeter (Stop sign, speed limit, etc.)

PAC HOC WALK AUDIT SCORES

Number of Reviewers	4
Time taken to complete walk?	20.5min
Overall Averaged Score	35.3
Proximity to Key Destinations Averaged Score	6.5
Safety and Comfort Averaged Score	9
Accessibility Averaged Score	9.75
Amenities Averaged Score	10

Reviewer Notes on this section	Perfect for families with young children; no homeless observed.	Very well maintained	It is pretty good inside the park, but should include buffers from traffic	Sidewalks are very narrow and only give enough space for 2 people to walk side by side.
Score for this section (Max 10pts)	10	10	8	8
ACCESSIBILITY (Max 10 pts)				
Is the walking route paved?	Yes	Yes	Yes	Yes
Are there areas where the walking route is not paved?	No	No	No	No
Is the walking route ADA accessible?	Yes	Yes	Yes	Yes
Is there wayfinding signage to locate the walk? How about throughout the walk?	No, but not needed; Perimeter path is obvious	No. Probably because it is simply a park with sidewalks	It is just the perimeter so it is very intuitive. There are some signs showing major entrances/exits, but that is it	No way finding on Marners, Walk is very small and is only a simple route around the perimeter.
Is the walk family-friendly and/or dog friendly?	Yes - both; but presume dogs should be on leash.	Yes	Yes. I saw lots of people with dogs and strollers	Yes
Reviewer Notes on this section	Good for short walk with kids or less mobile	Easy all around, large parking lot	I saw a lot of people walking dogs and with strollers going to the playground. Inside park very accessible, outside is less	There are many picnic tables and 2 playground areas and a designated soccer field.
Score for this section (Max 10pts)	10	10	9	10
AMENITIES (Max 10 pts)				
Is there access to restrooms? <i>e.g. Where are the bathrooms located? At the beginning, middle, end of the walk?</i>	Yes - two sets of restrooms; on different ends of park.	Yes, there are 2 sets one by parking area	Yes, multiple bathrooms at separate ends of the park.	Yes
Is there access to drinking water?	Multiple Locations	Yes multiple	Yes, about 3 at separate ends of the park	Yes
Are there benches through out the walk? <i>e.g. At the beginning, middle, end of the walk?</i>	Yes multiple locations	Yes multiple	Yes. I counted 20+ around the perimeter.	Throughout the path and in other areas near the gazebo, restrooms, and soccer fields
Does the walk have tree cover and/or areas with shade?	Yes - extensive tree cover	Some	Most walkway has trees providing shade.	Yes
Reviewer Notes on this section	Well- appointed neighborhood park with playground, picnic area, basketball court, and soccer field	Full court paved basketball court, soccer field with goals, playground	Good amenities. Soccer goals, flat field, baseball court, 2 playgrounds, informational deesk, etc.	NA
Score for this section (Max 10pts)	10	10	10	10
Additional Reviewer Notes				
Why should this walk be considered a Top Ten? <i>e.g. What stood out about this walk? Was it pleasant? Would you recommend others to try out this walk?</i>	Yes - lovely, short/accessible 1-mile loop around scenic park. Well-maintained park facilities; excellent for families or evening strolls; or before/after a picnic in the park.	The walk around and through the beautiful park would be ideal for families with young children and for casual walks. Two laps around = 2 Miles	This park is very clean. When I came around 9am there were groundskeepers maintaining. There are multiple amenities inside the park. Lots of shade and peaceful neighborhoods. Lots of dog walkers and people with strollers. It would be nice if more connected, but overall very pleasurable and peaceful walk.	It is an easy flat and short walk. It is not busy or crowded. It is quiet but also has good amenities for everyone. Restrooms are in good condition and are clean.

SCW2_McCoy Creek Trail



PAC AD HOC WALK AUDITS ON

NAME OF REVIEWER	Joe
NAME OF THE PROPOSED WALK	Southside Bikeway
TOTAL SCORE (Max 40 pts)	33 (probably 35-36 if limited walk to that north of California Dr.)
How did you travel to the location?	Car
If you travel by car, was there a fee to park?	Parked at the north end of the shopping lot of WINCO Foods, not at the Park-n-Ride or businesses near Hume Way
If so how much?	
Was there designated parking?	Yes
Was there ADA parking available?	Yes
How long did it take to complete the walk?	1 Hour round trip - approx 2 3/4miles

KEY ITEMS TO ASSESS DURING

PROXIMITY TO DESTINATIONS	
Is there scenic value to the walk?	Good scenic value along tree-lined bikeway, but no vistas; route is straight with backyards on either side
Does the walk pass by/connect to parks? If so how many?	Goes by small Southwood Park at crossing of Alamo Creek bike trail, and ends near Al Patch Park where bikeway ends at California Dr. Padan Park is approximetely 1/8 mile off Southside Bikeway at Marshall Rd.
Is there access to historical sites or city land marks?	Southside Bikeway is along route of old Sacramento Northern Railway; also crosses scenic Alamo Creek Bikeway
Is there access to downtown?	Downtown Vacaville approx 1 mile north of WINCO via Davis Street via congested undercrossing of I-80
Reviewer notes on this section	Nice tree-lined bikeways/walking path with several adjacent neighborhood parks
How would you rate this walk? (Max 10pts)	9
SAFETY AND COMFORT (Max	
Did you feel safe and/or comfortable walking the route?	Yes

PAC HOC WALK AUDIT SCORES

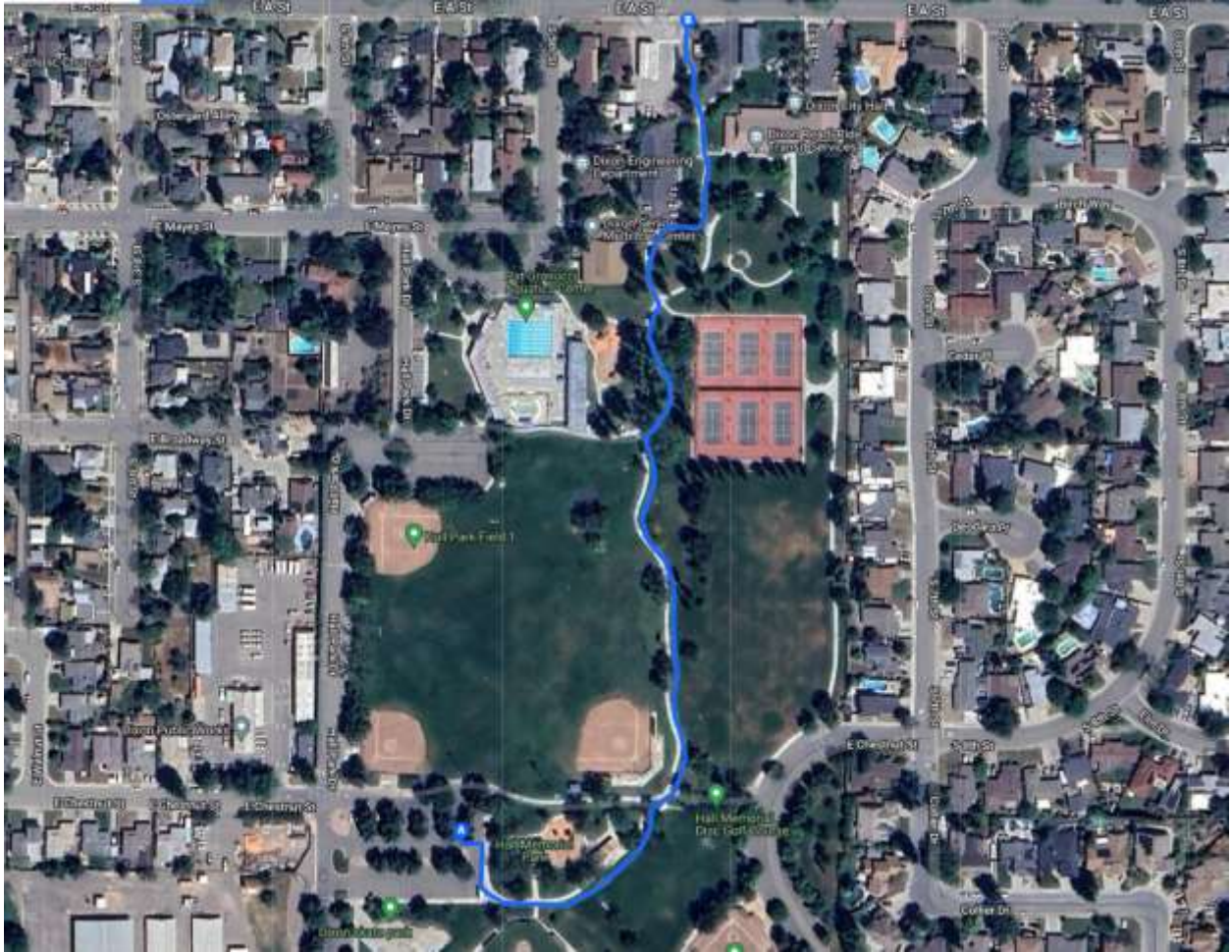
Number of Reviewers	1
Time taken to complete walk?	60 min
Overall Averaged Score	33
Proximety to Key Destinations Averaged Score	9
Safety and Comfort Averaged Score	8
Accessibility Averaged Score	7
Amenities Averaged Score	9

Are there posted hours of use?	No
Is this a walk you would recommend during daylight and/or night time?	Daylight Only
Are there light fixtures available throughout the walk? Do you think the walk will be well light during the night?	None; would be relatively dark with no lights and tree cover
Is there an adequate buffer between the pedestrian and single passenger vehicles?	Yes - north of California Dr; isolated trail with 2 crossings with signals or flashing beacons (Marshall Rd, & Alamo Dr. California Dr at south end bikeway has no crosswalks or signals - unsafe
What is the pavement condition of the walk? Are there areas of concern?	OK condition for asphalt bikeway; some cracks have been sealed.
What is the condition of pedestrian infrastructure? <i>e.g. are the crosswalks in need of restriping, are there bulb-outs at intersections, are there Rectangular Rapid Flashing Beacons and do they work?</i>	Crossing at Marshall and Alamo have updated ADA ramps, with signals / beacons, but no bulb-outs. No pedestrian infrastructure across California Dr. from end of bikeway to Al Patch Park.
Reviewer Notes on this section	Safe bikeway from Hume Rd to California Dr; no designated or safe crossing of California Dr. to Al Patch Park. No homeless camps observed.
Score for this section (Max 10pts)	8
ACCESSIBILITY (Max 10 pts)	
Is the walking route paved?	Yes
Are there areas where the walking route is not paved?	No
Is the walking route ADA accessible?	Yes - north of California Dr. Not from end of bikeway across California Dr. to Al Patch Park
Is there wayfinding signage to locate the walk? How about throughout the walk?	No
Is the walk family-friendly and/or dog friendly?	Yes - north of California Dr.
Reviewer Notes on this section	Only accessible north of California Dr. ; accessible connection to Al Patch Park would require approx 0.1 mi widened sidewalk, and new ADA ramps and flashing beacon crossing of California Dr.
Score for this section (Max 10pts)	7 overall - (10 north of California Dr.)
AMENITIES (Max 10 pts)	
Is there access to restrooms?	

<i>e.g. Where are the bathrooms located? At the beginning, middle, end of the walk?</i>	Public restrooms at Al Patch Park, also at WINCO Foods none at Southwood Park
Is there access to drinking water?	Water fountain at Al Patch Park, also at WINCO Foods, none at Southwood Park
Are there benches through out the walk? <i>e.g. At the beginning, middle, end of the walk?</i>	Two observed along bikeway
Does the walk have tree cover and/or areas with shade?	Yes - nice tree cover along bikeway
Reviewer Notes on this section	Adjacent Southwood Park at Alamo Creek has a playground. Al Patch Park has ballfields and track.
Score for this section (Max 10pts)	9

Additional Reviewer Notes	
Why should this walk be considered a Top Ten? <i>e.g. What stood out about this walk? Was it pleasant? Would you recommend others to try out this walk?</i>	Yes - nice 2+ mile out-back walk on safe, tree-lined path, from grocery store with parks adjacent. Recommend starting at WINCO with turnaround at California Dr. COuld start at Al Patch Park and do in reverse for total of about 2.5 miles, however this requires crossing California Dr. at unmarked crossing. Recommend Vacaville/STA add an improved crossing of California Dr., and trail extension to Al Patch Park to their active transportation plan to improve this trail.

DW2_Hall Memorial Park



PAC AD HOC WALK AUDITS

NAME OF REVIEWER	Joe	Michael	Francesca	Andrea
NAME OF THE PROPOSED WALK	Hall Memorial Park	Hall Memorial Park	Memorial Park	Memorial Park
TOTAL SCORE (Max 40 pts)	33	30	38	39
How did you travel to the location?	Car	Car	Car	Car
If you travel by car, was there a fee to park?	No	No Fee	No	No fee
If so how much?				
Was there designated parking?	Yes	Yes	Yes	Yes
Was there ADA parking available?	Yes	Yes	Yes	Yes
How long did it take to complete the walk?	20 Minutes, 1 mi out/back, or loop around east-side of park	20 Minutes	12 minutes one way	12 minutes
KEY ITEMS TO ASSESS DURING				
PROXIMITY TO DESTINATIONS				
Is there scenic value to the walk?	No scenic vistas, but walk thorough city park with pool and ballfields	Minimal	More scenic than other parks. Lots of trees and vegetation.	Yes
Does the walk pass by/connect to parks?	Walk across/around Hall Memorial Park	Is in the park borders city hall to north and dixon mayfair to south	Yes. Connects to football fields, public pools. About 3+ different places	Connects to city hall and football stadium.
Is there access to historical sites or city land marks?	Goes by Dixon City Hall and adjacent to Dixon Mayfair grounds and adjacent to Dixon MayFair grounds	Not evident	Yes. Connects to city hall, senior center	Connects to city hall
Is there access to downtown?	Short 1/4 mi walk on sidewalk from City Hall to Downtown	Close about 5 blocks	Yes, 9 minute walk	Yes, 9 minute walk to downtown
Reviewer notes on this section	At city park with amenities, close to downtown, Dixon MayFair when active	Accent on sports - the walk is nothing special		Senior center and snack bar within park
How would you rate this walk? (Max 10pts)	7	4	10	10
SAFETY AND COMFORT (Max				
Did you feel safe and/or comfortable walking the route?	Yes	Yes	Yes.	Yes
Are there posted hours of use?	None observed	Not evident	Park is 5am-11pm	Did not see signage
Is this a walk you would recommend during daylight and/or night time?	Either day or night when lights are on	Could Do	Both, but better during the day	Both
Are there light fixtures available throughout the walk? Do you think the walk will be well light during the night?	Light along most of route. Walk should be reasonably well lit when lights are on.	Yes	There are lights, but lots of tree cover so it may not be very bright during the night.	Yes, there are hard to spot because of trees
Is there an adequate buffer between the pedestrian and single passenger vehicles?	Yes - trails not along streets; some adjacent/across parking lots	N/A	Yes. Not next to main roads	Yes, theres an intentional park away from streets
What is the pavement condition of the walk? Are there areas of concern?	Mixed, some good, but other areas heavily cracked	Good	Concrete - in good condition	Good
What is the condition of pedestrian infrastructure? e.g. are the crosswalks in need of restriping, are there bulb-outs at intersections, are there Rectangular Rapid Flashing Beacons and do they work?	N/A as no street crossings	Good	N/A	No crosswalks in park, has stop signs and signage and designated crosswalks

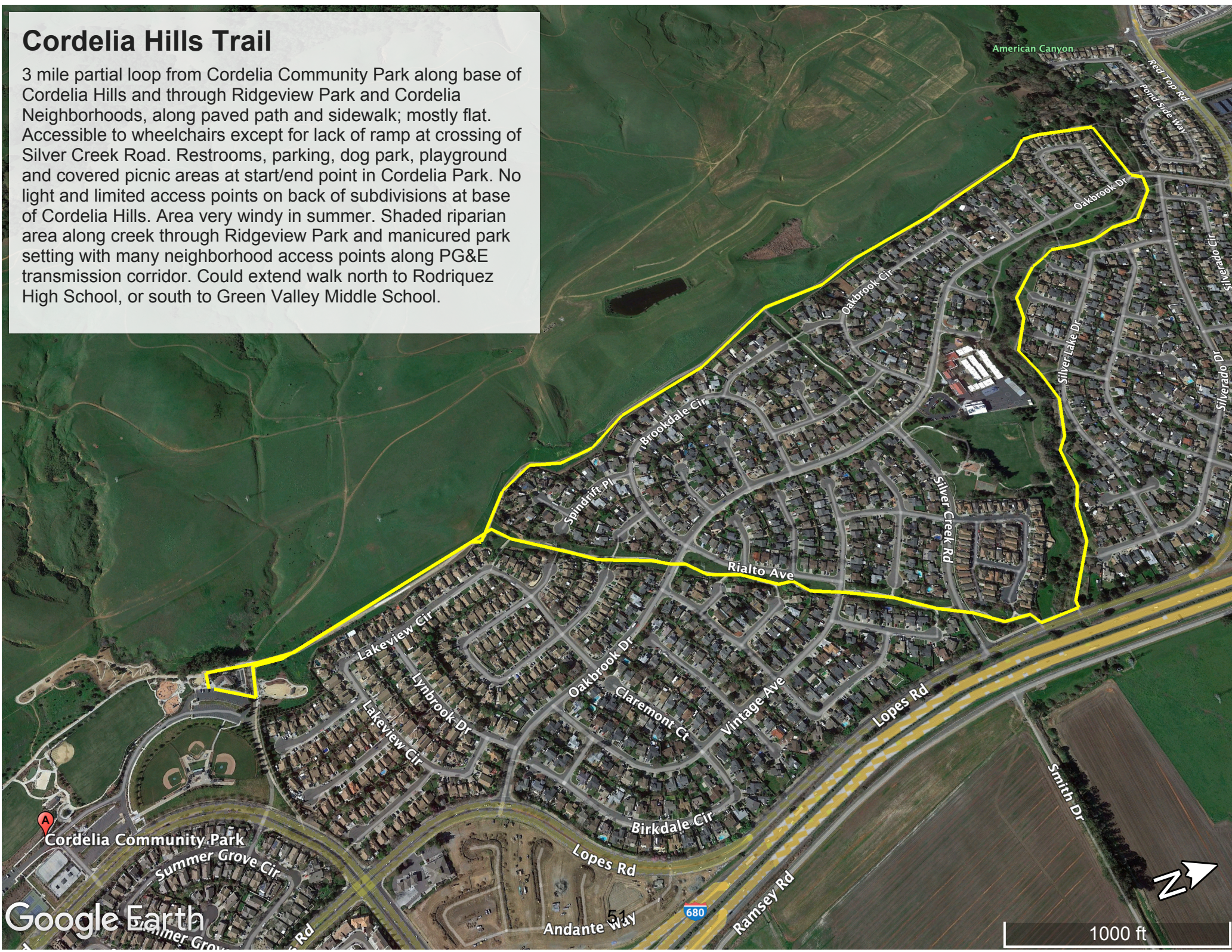
PAC HOC WALK AUDIT SCORES

Number of Reviewers	4
Time taken to complete walk?	16min
Overall Averaged Score	35
Proximity to Key Destinations Averaged Score	7.75
Safety and Comfort Averaged Score	8.75
Accessibility Averaged Score	9
Amenities Averaged Score	9.5

Reviewer Notes on this section	Park seems well used due to pool and fields, and proximity to City Hall.		Seems safe. Many people spotted in separate amenities	
Score for this section (Max 10pts)	8	9	9	9
ACCESSIBILITY (Max 10 pts)				
Is the walking route paved?	Yes - trails not along streets; some adjacent/across parking lots	Yes	Yes	Yes
Are there areas where the walking route is not paved?	No	No	No	No
Is the walking route ADA accessible?	Yes, but need to look for ramps and use care in choosing route and navigating cracked pavement	Yes	Yes	Yes
Is there wayfinding signage to locate the walk? How about throughout the walk?	No	No signage for walk	Not good signage. I found the walk a little confusing in the beginning	Near the senior center only
Is the walk family-friendly and/or dog friendly?	Yes	Yes	Yes	Yes, there poop bag stations, but no poop bags available.
Reviewer Notes on this section	Narrow, cracked sidewalk in some places; route not always obvious with lack of signage.	Infrastructure fine, but no emphasis on walkway		More ADA parking close to the senior center and parking
Score for this section (Max 10pts)	8	9	9	10
AMENITIES (Max 10 pts)				
Is there access to restrooms? <i>e.g. Where are the bathrooms located? At the beginning, middle, end of the walk?</i>	Yes, at south end of park; bathrooms also likely at City Hall during open hours	Yes	Yes	Yes
Is there access to drinking water?	Yes, at multiple locations	Yes	Yes	Yes
Are there benches through out the walk? <i>e.g. At the beginning, middle, end of the walk?</i>	Yes	Yes	There is not a ton, but a decent amount through the walk	Yes, near amenities and sports areas
Does the walk have tree cover and/or areas with shade?	Some trees and shade shelters	Some	Good amount of tree cover	Plenty of shade
Reviewer Notes on this section	Public park has skate park, pool, baseball fields, tennis courts, and picnic area	Very sports oriented - soccer, tennis, skateboard, 3 baseball fields, walking is secondary pool	There is a public pool, senior center, basketball court, tennis court, and baseball diamonds.	There's 4 baseball courts, tennis courts, ultimate fribee and a skate park
Score for this section (Max 10pts)	10	8	10	10
Additional Reviewer Notes				
Why should this walk be considered a Top Ten? <i>e.g. What stood out about this walk? Was it pleasant? Would you recommend others to try out this walk?</i>	Yes - short/generally accessible 1-mile walk across/around city park with extensive facilities. Good for morning/evening/family stroll or while attending picnic or sporting activities	Good for sports, not so interesting for walking	This was a great scenic walk. There is a lot to do in it and it is very clean and aesthetic. The variety of amenities stood out to me.	Theres amenities for everyone to enjoy: picnic, pool, skate, tennis, fribee. It is close to downtown, very walkable and accessible. It has limited parking.

Cordelia Hills Trail

3 mile partial loop from Cordelia Community Park along base of Cordelia Hills and through Ridgeview Park and Cordelia Neighborhoods, along paved path and sidewalk; mostly flat. Accessible to wheelchairs except for lack of ramp at crossing of Silver Creek Road. Restrooms, parking, dog park, playground and covered picnic areas at start/end point in Cordelia Park. No light and limited access points on back of subdivisions at base of Cordelia Hills. Area very windy in summer. Shaded riparian area along creek through Ridgeview Park and manicured park setting with many neighborhood access points along PG&E transmission corridor. Could extend walk north to Rodriguez High School, or south to Green Valley Middle School.



PAC AD HOC WALK AUDITS

NAME OF REVIEWER	Michael	Les	Dulce
NAME OF THE PROPOSED WALK	Cordelia Hills Trail	Cordelia Hill Trail	Cordelia Hill Trail
TOTAL SCORE (Max 40 pts)	38	31	30
How did you travel to the location?	Car	Car	Car
If you travel by car, was there a fee to park?	No Fee	No fee	No fee
If so how much?			
Was there designated parking?	Yes	Parking within Cordelia Community Park	Yes
Was there ADA parking available?	Yes + 8 EV	Yes	Plenty of parking space, though it would depend if there is a baseball game. There are also EV chargers.
How long did it take to complete the walk?	35 min Bike/ 1.5 Hr Walk	60 mins	1.5 hrs
KEY ITEMS TO ASSESS DURING			
PROXIMITY TO DESTINATIONS			
Is there scenic value to the walk?	Yes, not spectacular but pleasant	Yes	Yes, certain areas but not all
Does the walk pass by/connect to parks? Is so how many?	Yes, connects through Ridgeview	Connects to a community park and baseball fields	Yes, Ridgeview Park (Baseball/Dog Park/ Tennis Courts)
Is there access to historical sites or city landmarks?	Not obvious	No	No
Is there access to downtown?	Not sure	No	No
Reviewer notes on this section	The park has so many features		Neighborhood Park
How would you rate this walk? (Max 10pts)	9	7	7
SAFETY AND COMFORT (Max 10pts)			
Did you feel safe and/or comfortable walking the route?	Yes, except for high winds in some sections	Yes - some tree lined section throughout	Yes for the most part, there are sections closer to the Hills that is more closed off may not be as safe if people walk on it after sunset.
Are there posted hours of use?	Dawn to Dusk	No posted hours	The park has posted hours, the walk route does not
Is this a walk you would recommend during daylight and/or night time?	Daytime is better	Preferable during daylight hours	During daylight
Are there light fixtures available throughout the walk? Do you think the walk will be well light during the night?	Lights are not present everywhere	There are light fixtures during most of the walk. There are none along the hillside portion. Part of the path has a lot of trees	There are lights through Rialto Avenue
Is there an adequate buffer between the pedestrian and single passenger vehicles?	Yes	Yes	yes
What is the pavement condition of the walk? Are there areas of concern?	Good 81+ walks about 50%	All portions are paved. There are some irregularities along the hillside portion.	Paved, some sections are a bit more cracked.
What is the condition of pedestrian infrastructure? <i>e.g. are the crosswalks in need of restriping, are there bulb-outs at intersections, are there Rectangular Rapid Flashing Beacons and do they work?</i>	N/A	Overall condition is very good. There are no beacons or striping in the residential portion.	Overall is good, there are sections where the pedestrian would need to cross over, and there are no ADA ramps and/or crosswalks
Reviewer Notes on this section	Safe for sure, easy walk. Probably not ideal at night time		Safe, would help if people walked it with a partner, especially closer to Oakbrook Drive/ Closer to Cordelia Hills
Score for this section (Max 10pts)	9	8	8
ACCESSIBILITY (Max 10 pts)			
Is the walking route paved?	Yes	All sections are paved and in good condition. There are some irregularities in the hillside portion.	Yes, all are paved,
Are there areas where the walking route is not paved?	No	No	No

PAC HOC WALK AUDIT SCORES

Number of Reviewers	3
Time taken to complete walk?	61.66666667
Overall Averaged Score	33
Proximity to Key Destinations Averaged Score	7.66666667
Safety and Comfort Averaged Score	8.5
Accessibility Averaged Score	8.33333333
Amenities Averaged Score	8.33333333

Is the walking route ADA accessible?	Not completely, as noted in P1	The curbs at the residential portion are not ADA compliant. Thi is most likely to prevent vehicles. Walkers can go a very short distance to teh corner of the block which is ADA compliant.	There are sections by Oakbook Drive there are no ADA ramps. Also along the Rialto Ave multiple intersections that are not ADA and no crosswalks.
Is there wayfinding signage to locate the walk? How about throughout the walk?	There is wayfinding in the park, but not throughout the loop is fairly obvious and residents are nice and will guide you	No way finding signs. No having navigation directional signs along path.	Signs at the park but not trail
Is the walk family-friendly and/or dog friendly?	Yes	Yes to both	Yes for both
Reviewer Notes on this section	Nice mix of park, residential, and open space	The hillside has industing slopes up to 3.5%. It may be a bit tiring for someone in a wheelchair. The residential portion is smooth and level.	The path can be used by wheelchair, just that there are areas that do not have ramps
Score for this section (Max 10pts)	9	8	7
AMENITIES (Max 10 pts)			
Is there access to restrooms? <i>e.g. Where are the bathrooms located? At the beginning, middle, end of the walk?</i>	Yes, both parks	There are restrooms at the community park.	Yes - at the entrance
Is there access to drinking water?	Yes	At the community park.	Not sure
Are there benches through out the walk? <i>e.g. At the beginning, middle, end of the walk?</i>	Not where the trail goes through the residential area	There are only benches at the community park and the front of the residential area (near hopes Rd)	There are benches but a specific areas (just like Les mentioned)
Does the walk have tree cover and/or areas with shade?	Plenty of shade	There is a tree cover during the middle portion of the walk.	Yes, there is plenty of tree cover and shaded areas throughout the walk
Reviewer Notes on this section	The parks make this a nice destination for walks		
Score for this section (Max 10pts)	9	8	8

Additional Reviewer Notes			
Why should this walk be considered a Top Ten? <i>e.g. What stood out about this walk? Was it pleasant? Would you recommend others to try out this walk?</i>	I recommend other try this walk heading south from Cordelia Park, it is a nice walk with open space on your right. However, it is very windy.	The walk offers scenic views of hte hillside and a tree lined wooded section, The residential area is nice.	The path parallel to Silver Lake Drive is a creek, so the pedestrian is able to hear it and have access to it (there were some small bridges across the creek) the neighborhood is peaceful. If recommended for Top Ten, I would recommend a shorter route through the Park (Oakbrook Drive) and then merging back into Silver Creek Class and into the Cordelia Hills walk.

Suisun City Waterfront

2-Mile loop of the Suisun City Waterfront from the Fairfield/Suisun Amtrak Station. Parking at the adjacent Park-n-Ride lot or take the train or bus from further afield. Goes by City Hall, waterfront park that hosts summer concerts and Christmas boat parade, Marina and many restaurants, with a final stop by the It's It Outlet Store for an ice cream sandwich adjacent to the train/bus station.



PAC AD HOC WALK AUDITS ON

NAME OF REVIEWER	Michael	Les
NAME OF THE PROPOSED WALK	Suisun City Waterfront	Suisun City Waterfront
TOTAL SCORE (Max 40 pts)	28	38
How did you travel to the location?	Car	Car
If you travel by car, was there a fee to park?	No	No fee
If so how much?		
Was there designated parking?	Yes	There is parking at the park and ride along the waterfront and at Mike Day Park
Was there ADA parking available?	Yes	Yes
How long did it take to complete the walk?	55 Minutes	38 minutes

KEY ITEMS TO ASSESS DURING

PROXIMITY TO DESTINATIONS

Is there scenic value to the walk?	Yes, the waterfront	Yes. The waterfront is always beautiful. It's nice to see it from all sides.
Does the walk pass by/connect to parks? Is so how many?	Yes, 2 parks	Yes Mike Day Park
Is there access to historical sites or city landmarks?	Yes, the city hall and marina.	Suisun City Train Depot. The Suisun City lighthouse is also noteworthy.
Is there access to downtown?	It is in downtown.	It is right in the center of downtown with access to many forms of transportation.
Reviewer notes on this section	It gives you a good look at the marina in downtown.	Picturesque views and multiple transportation options.
How would you rate this walk? (Max 10pts)	9	10

SAFETY AND COMFORT (Max

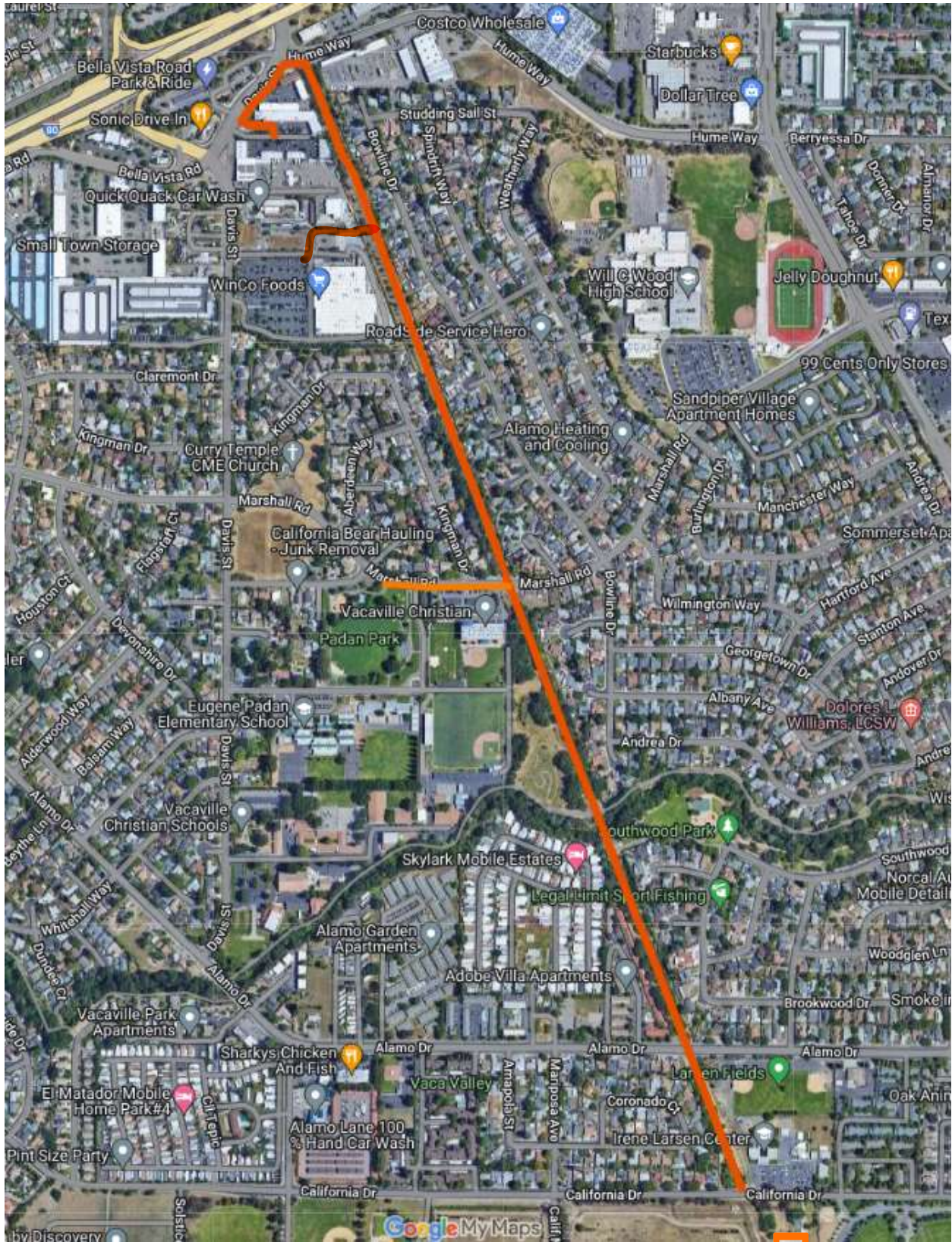
Did you feel safe and/or comfortable walking the route?	Not completely	Yes. It is an open area with lots of people around and sufficient lighting.
Are there posted hours of use?	Did not notice	No
Is this a walk you would recommend during daylight and/or night time?	Daylight, not during night time	Day or night, but day is preferable.
Are there light fixtures available throughout the walk? Do you think the walk will be well light during the night?	Yes, Yes	Yes. Abundant lighting.
Is there an adequate buffer between the pedestrian and single passenger vehicles?	Yes	The buffer is adequate, but some sidewalks are along the street.
What is the pavement condition of the walk? Are there areas of concern?	Good condition	Pavement on some of the sidewalks is cracked and uneven. Overall, it is sufficient even for a wheelchair. The waterfront area is perfectly smooth.
What is the condition of pedestrian infrastructure?		

PAC HOC WALK AUDIT SCORES

Number of Reviewers	2
Time taken to complete walk?	46.5 min
Overall Averaged Score	33
Proximity to Key Destinations Averaged Score	9.5
Safety and Comfort Averaged Score	6.5
Accessibility Averaged Score	8.5
Amenities Averaged Score	8.5

<i>e.g. are the crosswalks in need of restriping, are there bulb-outs at intersections, are there Rectangular Rapid Flashing Beacons and do they work?</i>	A few streets in Kellogg Street Area did not have sidewalks on both sides.	Crosswalks are marked with striping.
Reviewer Notes on this section	Loud groups in park caused some concern.	
Score for this section (Max 10pts)	4	9
ACCESSIBILITY (Max 10 pts)		
Is the walking route paved?	Yes	All areas are paved, but some sidewalks are uneven
Are there areas where the walking route is not paved?	No	No
Is the walking route ADA accessible?	I think so	Yes
Is there wayfinding signage to locate the walk? How about throughout the walk?	No, but some signage for landmarks is good, "Marina", "City Hall", etc.	There are signs for downtown, but not for the walking path.
Is the walk family-friendly and/or dog friendly?	Yes	Yes to both
Reviewer Notes on this section		East access for all
Score for this section (Max 10pts)	8	9
AMENITIES (Max 10 pts)		
Is there access to restrooms? <i>e.g. Where are the bathrooms located? At the beginning, middle, end of the walk?</i>	Not so much, porta potties in park	There is one restroom near the waterfront
Is there access to drinking water?	Not obvious	There is one fountain near the waterfront
Are there benches through out the walk? <i>e.g. At the beginning, middle, end of the walk?</i>	Along the marina	There are plenty of benches everywhere.
Does the walk have tree cover and/or areas with shade?	Yes, not bad	There is limited tree cover in some areas
Reviewer Notes on this section		Ideal route for walk/rest
Score for this section (Max 10pts)	7	10
Additional Reviewer Notes		
Why should this walk be considered a Top Ten? <i>e.g. What stood out about this walk? Was it pleasant? Would you recommend others to try out this walk?</i>	In principle it is a nice walk, just felt uncomfortable in a few spots - the park and along kellogg street.	This is an ideal walk for everyone. You can find all amenities (restrooms, water, lighting, recreation, park). The view of the waterfront is nice.

VW2_Southside Bikeway



PAC AD HOC WALK AUDITS ON

NAME OF REVIEWER	Joe
NAME OF THE PROPOSED WALK	Southside Bikeway
TOTAL SCORE (Max 40 pts)	33 (probably 35-36 if limited walk to that north of California Dr.)
How did you travel to the location?	Car
If you travel by car, was there a fee to park?	Parked at the north end of the shopping lot of WINCO Foods, not at the Park-n-Ride or businesses near Hume Way
If so how much?	
Was there designated parking?	Yes
Was there ADA parking available?	Yes
How long did it take to complete the walk?	1 Hour round trip - approx 2 3/4miles

KEY ITEMS TO ASSESS DURING

PROXIMITY TO DESTINATIONS	
Is there scenic value to the walk?	Good scenic value along tree-lined bikeway, but no vistas; route is straight with backyards on either side
Does the walk pass by/connect to parks? If so how many?	Goes by small Southwood Park at crossing of Alamo Creek bike trail, and ends near Al Patch Park where bikeway ends at California Dr. Padan Park is approximetely 1/8 mile off Southside Bikeway at Marshall Rd.
Is there access to historical sites or city land marks?	Southside Bikeway is along route of old Sacramento Northern Railway; also crosses scenic Alamo Creek Bikeway
Is there access to downtown?	Downtown Vacaville approx 1 mile north of WINCO via Davis Street via congested undercrossing of I-80
Reviewer notes on this section	Nice tree-lined bikeways/walking path with several adjacent neighborhood parks
How would you rate this walk? (Max 10pts)	9
SAFETY AND COMFORT (Max	
Did you feel safe and/or comfortable walking the route?	Yes

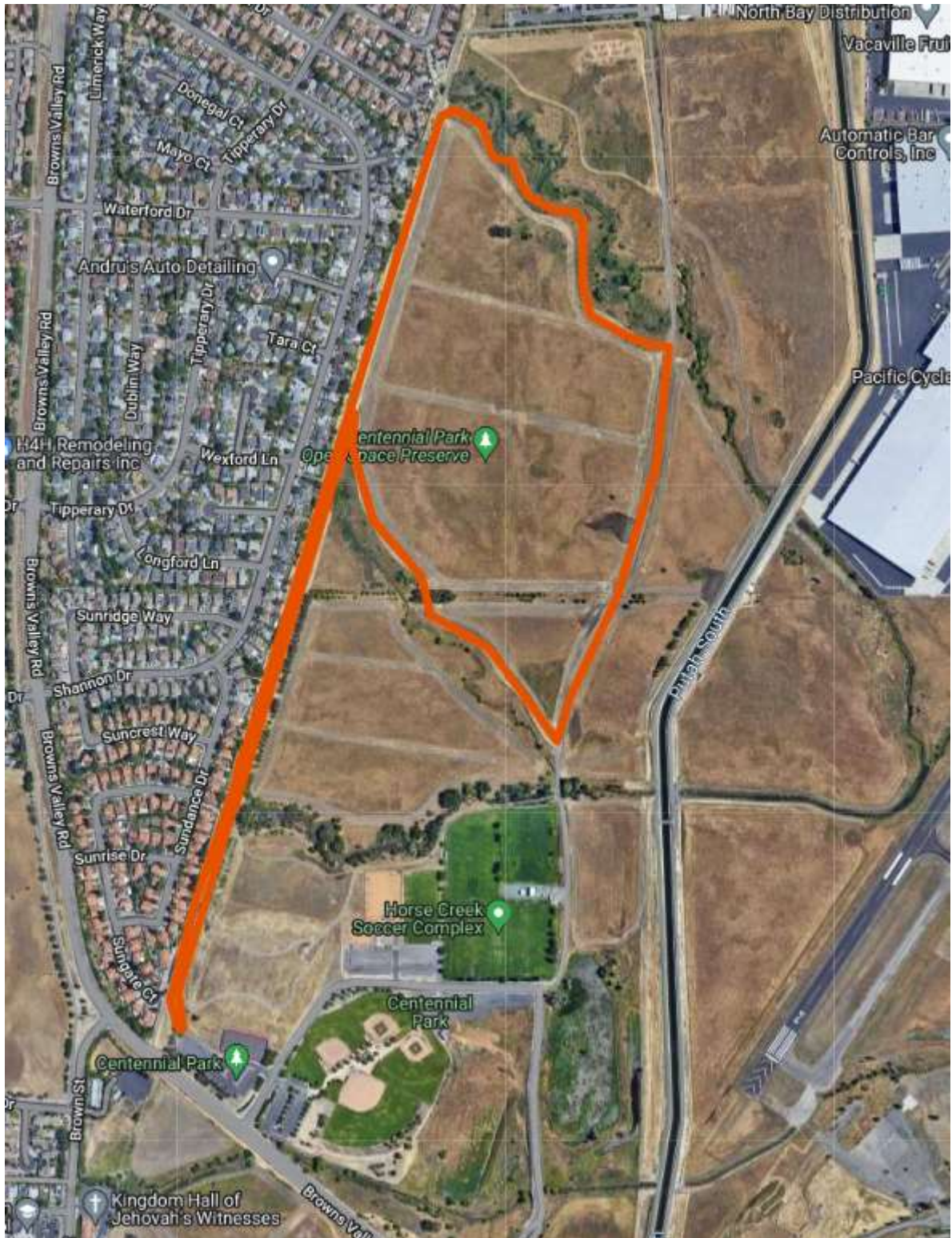
PAC HOC WALK AUDIT SCORES

Number of Reviewers	1
Time taken to complete walk?	60 min
Overall Averaged Score	33
Proximety to Key Destinations Averaged Score	9
Safety and Comfort Averaged Score	8
Accessibility Averaged Score	7
Amenities Averaged Score	9

Are there posted hours of use?	No
Is this a walk you would recommend during daylight and/or night time?	Daylight Only
Are there light fixtures available throughout the walk? Do you think the walk will be well light during the night?	None; would be relatively dark with no lights and tree cover
Is there an adequate buffer between the pedestrian and single passenger vehicles?	Yes - north of California Dr; isolated trail with 2 crossings with signals or flashing beacons (Marshall Rd, & Alamo Dr. California Dr at south end bikeway has no crosswalks or signals - unsafe
What is the pavement condition of the walk? Are there areas of concern?	OK condition for asphalt bikeway; some cracks have been sealed.
What is the condition of pedestrian infrastructure? <i>e.g. are the crosswalks in need of restriping, are there bulb-outs at intersections, are there Rectangular Rapid Flashing Beacons and do they work?</i>	Crossing at Marshall and Alamo have updated ADA ramps, with signals / beacons, but no bulb-outs. No pedestrian infrastructure across California Dr. from end of bikeway to Al Patch Park.
Reviewer Notes on this section	Safe bikeway from Hume Rd to California Dr; no designated or safe crossing of California Dr. to Al Patch Park. No homeless camps observed.
Score for this section (Max 10pts)	8
ACCESSIBILITY (Max 10 pts)	
Is the walking route paved?	Yes
Are there areas where the walking route is not paved?	No
Is the walking route ADA accessible?	Yes - north of California Dr. Not from end of bikeway across California Dr. to Al Patch Park
Is there wayfinding signage to locate the walk? How about throughout the walk?	No
Is the walk family-friendly and/or dog friendly?	Yes - north of California Dr.
Reviewer Notes on this section	Only accessible north of California Dr. ; accessible connection to Al Patch Park would require approx 0.1 mi widened sidewalk, and new ADA ramps and flashing beacon crossing of California Dr.
Score for this section (Max 10pts)	7 overall - (10 north of California Dr.)
AMENITIES (Max 10 pts)	
Is there access to restrooms?	

<i>e.g. Where are the bathrooms located? At the beginning, middle, end of the walk?</i>	Public restrooms at Al Patch Park, also at WINCO Foods none at Southwood Park
Is there access to drinking water?	Water fountain at Al Patch Park, also at WINCO Foods, none at Southwood Park
Are there benches through out the walk? <i>e.g. At the beginning, middle, end of the walk?</i>	Two observed along bikeway
Does the walk have tree cover and/or areas with shade?	Yes - nice tree cover along bikeway
Reviewer Notes on this section	Adjacent Southwood Park at Alamo Creek has a playground. Al Patch Park has ballfields and track.
Score for this section (Max 10pts)	9

Additional Reviewer Notes	
Why should this walk be considered a Top Ten? <i>e.g. What stood out about this walk? Was it pleasant? Would you recommend others to try out this walk?</i>	Yes - nice 2+ mile out-back walk on safe, tree-lined path, from grocery store with parks adjacent. Recommend starting at WINCO with turnaround at California Dr. COuld start at Al Patch Park and do in reverse for total of about 2.5 miles, however this requires crossing California Dr. at unmarked crossing. Recommend Vacaville/STA add an improved crossing of California Dr., and trail extension to Al Patch Park to their active transportation plan to improve this trail.



PAC AD HOC WALK AUDITS ON

NAME OF REVIEWER	Joe	Kathrina	Dulce
NAME OF THE PROPOSED WALK	Interperative Walk Centennial Park	Interperative Walk Centennial Park	Interpretive Walk At Centennial Park
TOTAL SCORE (Max 40 pts)	34	31	31
How did you travel to the location?	Car	Car	Car
If you travel by car, was there a fee to park?	No	No	No
If so how much?			
Was there designated parking?	Yes	Yes	Yes
Was there ADA parking available?	Yes	Yes	Yes
How long did it take to complete the walk?	50 minutes, Estimated Length 2.5 mile parial loop	Did a partial walk	60 minutes (I did speed run certain areas)
KEY ITEMS TO ASSESS DURING			
PROXIMITY TO DESTINATIONS			
Is there scenic value to the walk?	Yes - open space of fallow fields, riparian corridors with views of English Hills/Vaca Mtns; adjacent to public park	Yes, walking on open fields and next to Putah Creek	Yes, there are interpretive panels by the
Does the walk pass by/connect to parks? If so how many?	Yes - walk starts and finishes at Centennial Park, 1	Yes, centennial park, baseball field and dogpark, 1	Yes the park has Tennis, baseball, dog park)
Is there access to historical sites or city land marks?	No historical sites; but nearby Nut Tree airport and Plaza	No	No, but the Nuggest is down the street, and residential houses
Is there access to downtown?	About 2 miles away on surface streets	No	No
Reviewer notes on this section	Accessible open space walk from public park	It was a nice walk, but pretty hot when I went. Mostly trail and gravel paths.	Mostly trail and Centennial Open Space Park
How would you rate this walk? (Max 10pts)	8	10	8
SAFETY AND COMFORT (Max			
Did you feel safe and/or comfortable walking the route?	Yes	Yes, there is a baseball field and dog park nearby with lots of people around.	Yes
Are there posted hours of use?	No signs observed	Did not see	Did not see
Is this a walk you would recommend during daylight and/or night time?	Daylight only	Daytime, no visable lampposts to light the walk.	Daylight
Are there light fixtures available throughout the walk? Do you think the walk will be well light during the night?	None along walk; lights at park ball fields Not well lit at night	No	No light posts, at least on the walk, maybe by the park
Is there an adequate buffer between the pedestrian and single passenger vehicles?	No cars along most of trail; exercise care crossing parking lots, in particular if busy with baseball/soccer tournaments	Yes, loop trail is not near a road. The linear trail is a Class IV.	Yes, separate, there is no car access
What is the pavement condition of the walk? Are there areas of concern?	Pavement good where present (70% of walk); 30% on eastern leg is gravel	Good. Mostly trail and gravel for the loop.	Mostly paved, there is a section at the beginning and in the middle that is dirt/gravel
What is the condition of pedestrian infrastructure? <i>e.g. are the crosswalks in need of restriping, are there bulb-outs at intersections, are there Rectangular Rapid Flashing Beacons and do they work?</i>	N/A - no street crossings requiring PED infrastructure	Good condition	Good, there is no intersections that the pedestrian would need to cross
Reviewer Notes on this section	No homeless encampments; one homeless RV in parking lot	I felt safe. Lots of people, hikers, and jogging around. Good pedestrian infrastructure.	There were multiple walkers and when I wen there was a game in the park

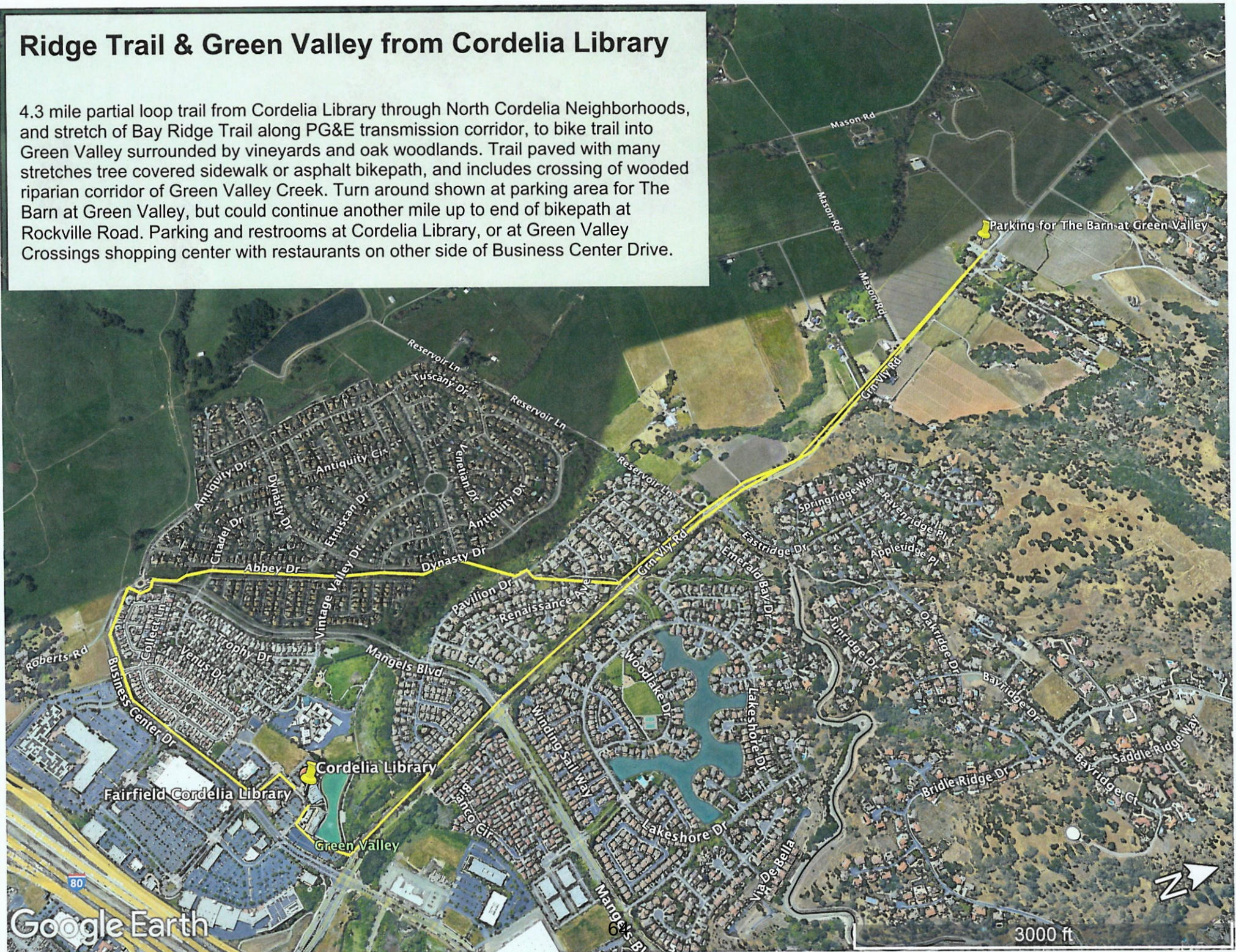
PAC HOC WALK AUDIT SCORES

Number of Reviewers	3
Time taken to complete walk?	60 min
Overall Averaged Score	32
Proximety to Key Destinations Averaged Score	8.66666667
Safety and Comfort Averaged Score	9
Accessibility Averaged Score	6.66666667
Amenities Averaged Score	7.66666667

Score for this section (Max 10pts)	9	10	8
ACCESSIBILITY (Max 10 pts)			
Is the walking route paved?	70% paved (westside and interpretive portions along riparian corridors), 30% gravel (east side across field)	Not the entire thing	Not entirely
Are there areas where the walking route is not paved?	Yes	Yes	Yes
Is the walking route ADA accessible?	Paved portion is ADA accessible	No	Not all the sections are ADA accessible
Is there wayfinding signage to locate the walk? How about throughout the walk?	None observed	No	No
Is the walk family-friendly and/or dog friendly?	Yes	Yes	Yes for both
Reviewer Notes on this section	Interpretive nature signage along trail alongside riparian corridors. Could extend walk on trail along both sides of northernmost riparian corridor	Definitely not ADA compliant due to the path being trail and gravel in some areas.	The gravel section loops the walk, and would not be accessible by wheelchairs, and this would cut the walk short for them.
Score for this section (Max 10pts)	8	5	7
AMENITIES (Max 10 pts)			
Is there access to restrooms? <i>e.g. Where are the bathrooms located? At the beginning, middle, end of the walk?</i>	Yes - full restrooms at ball fields; port-o-lets near soccer fields	Yes	Yes, by the park
Is there access to drinking water?	Yes - one fountain observed on building at ball fields	Not sure	No sure
Are there benches throughout the walk? eg. At the beginning, middle, end of the walk?	Occasional (approx 6) benches notes spread along west side and interpretive trails alongside riparian corridors; none on east side	No	Yes, I spotted about 5 of them.
Does the walk have tree cover and/or areas with shade?	Limited tree cover on west side and in park adjacent to ball fields; otherwise walk lacks shade trees or shelter	No - most of the walk is out in the open. This would not be a good walk for the middle of the summer	Limited three cover.
Reviewer Notes on this section	Adjacent Centennial Park has extensive baseball and soccer fields, tennis courts and dog park; west-side trail overlaps paved bike path with neighborhood connections		Park has dog park, baseball, tennis, though it may not be closer to destinations the area does have amenities
Score for this section (Max 10pts)	9	6	8
Additional Reviewer Notes			
Why should this walk be considered a Top Ten? <i>e.g. What stood out about this walk? Was it pleasant? Would you recommend others to try out this walk?</i>	Yes - Good open-space walk convenient to neighborhoods and town; and accessible from public park with amenities. Best done winter/spring/fall, or cool summer mornings/evenings. Too exposed/hot to enjoy in summer mid-day. Good bird-watching along riparian corridors of Interpretive Trail.	Yes - This is a nice walk through up Browns Valley which is a well-known area in Vacaville. It is nice that its near Centennial Park. Lots of people around the area or walk through the trail re-perception for safety it is good. Putah creek is also pretty popular walk. I saw some birds there as well. - expert- why is this called interpretive walk?	Access to the Open space preserve, the park does feel more trail like. Walking in the evening or early morning. I do like that there as a section of tree coverage, it made it seem like you were in the woods.

Ridge Trail & Green Valley from Cordelia Library

4.3 mile partial loop trail from Cordelia Library through North Cordelia Neighborhoods, and stretch of Bay Ridge Trail along PG&E transmission corridor, to bike trail into Green Valley surrounded by vineyards and oak woodlands. Trail paved with many stretches tree covered sidewalk or asphalt bikepath, and includes crossing of wooded riparian corridor of Green Valley Creek. Turn around shown at parking area for The Barn at Green Valley, but could continue another mile up to end of bikepath at Rockville Road. Parking and restrooms at Cordelia Library, or at Green Valley Crossings shopping center with restaurants on other side of Business Center Drive.



PAC AD HOC WALK AUDITS ON

NAME OF REVIEWER	Michael	Dulce
NAME OF THE PROPOSED WALK	Ridge Trail and Green Valley	Ridge Trail/Green Valley
TOTAL SCORE (Max 40 pts)	30	33
How did you travel to the location?	Car	Car
If you travel by car, was there a fee to park?	No	No
If so how much?		
Was there designated parking?	Yes	Yes
Was there ADA parking available?	Yes	Yes
How long did it take to complete the walk?	50 minute bicycle - 2 hour walk?	2 hrs (And I did speed walk certain areas)

KEY ITEMS TO ASSESS DURING

PROXIMITY TO DESTINATIONS

Is there scenic value to the walk?	Yes	Yes, the walk goes into open space, you get to see vineyards and farm animals, then coming back, you walk through the electrical cables through the neighborhood, the space was well maintained. Then it rounds out and goes into Costco and back to the library. Also at the library there is a lake walk, which I think is a bonus.
Does the walk pass by/connect to parks? Is so how many?	Not parks, but green belt part way	No parks
Is there access to historical sites or city land marks?	No	No
Is there access to downtown?	No	No, but it is by the library, and shopping and grocery center.
Reviewer notes on this section	Sweet walk - Lots of Variety when in doubt in every section, follow the overhead pole lines	There is a lot of variety of what the pedestrian gets to view while walking.
How would you rate this walk? (Max 10pts)	7	9

SAFETY AND COMFORT (Max

Did you feel safe and/or comfortable walking the route?	Yes	Yes, only place I did not feel comfortable was the walk that cuts through the neighborhood - by Abbey/Dynasty Drive, the cables were making electrical noise.
Are there posted hours of use?	No	No, only place R are not posted was of hour that cuts through of neighborhood - by Abbey/Dynasty Drive, of cable were making electrical noise.
Is this a walk you would recommend during daylight and/or night time?	No	Daylight
Are there light fixtures available throughout the walk? Do you think the walk will be well light during the night?	No	Yes, through Green Valley Road and in the Abbey Drive Road, though I am not sure how lit the walk would be during the night.
Is there an adequate buffer between the pedestrian and single passenger vehicles?	Yes	Yes
What is the pavement condition of the walk? Are there areas of concern?	Good	Yes, however in the north section of Green Valley Road the cement path turned more into a black top/trail and was more cracked.
What is the condition of pedestrian infrastructure?		

PAC HOC WALK AUDIT SCORES

Number of Reviewers	2
Time taken to complete walk?	120 min
Overall Averaged Score	31.5
Proximity to Key Destinations Averaged Score	8
Safety and Comfort Averaged Score	8.5
Accessibility Averaged Score	8
Amenities Averaged Score	7

<i>e.g. are the crosswalks in need of restriping, are there bulb-outs at intersections, are there Rectangular Rapid Flashing Beacons and do they work?</i>	Not an issue all good	Good, the walk does go through at least two intersections that have signals (they had ADA ramps) and smaller intersections by Abbey Drive and the intersection you had to cross to get over the roundabout
Reviewer Notes on this section	This is a nice walk - Lots of variety - Level - Some tree coverage	Very nice walk, I even walked it three times (one by myself, the other two with my mom and she even enjoyed it and was not even aware of this walk)
Score for this section (Max 10pts)	8	9
ACCESSIBILITY (Max 10 pts)		
Is the walking route paved?	Yes	Yes
Are there areas where the walking route is not paved?	No	No
Is the walking route ADA accessible?	Yes	Yes, though the open space section may be more bumpy for wheelchair user
Is there wayfinding signage to locate the walk? How about throughout the walk?	No	Yes, Regional Trails signs when you turn into Abbey Drive trail (where the cables were)
Is the walk family-friendly and/or dog friendly?	Yes	Yes for both
Reviewer Notes on this section	A bit tricky finding the start of the walk. I asked a librarian - but the first segment is a challenge	
Score for this section (Max 10pts)	8	8
AMENITIES (Max 10 pts)		
Is there access to restrooms? <i>e.g. Where are the bathrooms located? At the beginning, middle, end of the walk?</i>	At library only	Library would have bathrooms, however they would only be accessible if you go during the hours it is open.
Is there access to drinking water?	No	Inside the library
Are there benches through out the walk? <i>e.g. At the beginning, middle, end of the walk?</i>	No - except library at start	By the library, not much throughout the walk
Does the walk have tree cover and/or areas with shade?	Yes	Yes, there is pretty decent amount of tree coverage
Reviewer Notes on this section	Needs to be resourceful	
Score for this section (Max 10pts)	7	7

Additional Reviewer Notes		
Why should this walk be considered a Top Ten? <i>e.g. What stood out about this walk? Was it pleasant? Would you recommend others to try out this walk?</i>	Overall a pretty nice walk. I liked the variety - As the description, neighborhoods + green belt + shaded path along Green Valley Road - which is a major road, but not so busy. This walk goes through 3 or 4 zones easy and pleasant. Though, not many amenities.	I saw many people walking the trail and enjoyed the variety. There were not as many benches/rest stops and the walk was long, however, I did not feel as exhausted (unlike the Linear Trail Walk). I would recommend this in the Top Ten.

Bay Ridge Trail at Benicia State Recreation Area

3.3 mile partial loop trail from the Benicia State Recreation area to Glen Cove Waterfront Park in Vallejo. Parking, restrooms and picnic area at the Forest Deaner Native Plant Botanic Garden in Benicia SRA. \$6 entry fee per car (\$5 for seniors) to enter Benicia SRA. Trail is dirt and hilly and traverses portions of the Benicia Bay and Ridge Trails with fantastic views of the Carquinez Strait from the high bluffs in Benicia SRA or along the Glen Cove Waterfront Park. Offer see ships passing through the straits or the Capitol Corridor/Amtrak train along the opposite shore.



PAC AD HOC WALK AUDITS ON

NAME OF REVIEWER	Dulce
NAME OF THE PROPOSED WALK	Bay Ridge Trail at Benicia State Recreation Area
TOTAL SCORE (Max 40 pts)	30
How did you travel to the location?	Car
If you travel by car, was there a fee to park?	Yes - 6 dollars at the entrance of Benicia State Parks
If so how much?	
Was there designated parking?	Yes
Was there ADA parking available?	I am not sure
How long did it take to complete the walk?	120

KEY ITEMS TO ASSESS DURING

PROXIMITY TO DESTINATIONS

Is there scenic value to the walk?	Yes, access to the bay and nature.
Does the walk pass by/connect to parks? Is so how many?	Yes, Benicia State Park and the Glen Cove Waterfront, various regional trails
Is there access to historical sites or city land marks?	Benicia State Park
Is there access to downtown?	
Reviewer notes on this section	Very recreational trail vs the other walks I have been, it is a bit ways away, however there is a section by Glen Cove where they can park for free, and if you access through this section
How would you rate this walk? (Max 10pts)	7

SAFETY AND COMFORT (Max

Did you feel safe and/or comfortable walking the route?	I did feel safe,
Are there posted hours of use?	Moring to sunset (I need to double check
Is this a walk you would recommend during daylight and/or night time?	Daylight
Are there light fixtures available throughout the walk? Do you think the walk will be well light during the night?	No light fixtures

PAC HOC WALK AUDIT SCORES

Number of Reviewers	None
Time taken to complete walk?	120
Overall Averaged Score	30
Proximety to Key Destinations Averaged Score	7
Safety and Comfort Averaged Score	9
Accessibility Averaged Score	6
Amenities Averaged Score	8

Is there an adequate buffer between the pedestrian and single passenger vehicles?	Yes, the area is Class I trail and is far removed from the cars
What is the pavement condition of the walk? Are there areas of concern?	Trail, sections in the middle is paved however it would be bumpy there were cracks.
What is the condition of pedestrian infrastructure? <i>e.g. are the crosswalks in need of restriping, are there bulb-outs at intersections, are there Rectangular Rapid Flashing Beacons and do they work?</i>	No crosswalks the trail is continous, the pedestrian does not need to cross intersections
Reviewer Notes on this section	I enjoyed the scenic view and the access to the park and even the Bay, each section had a different point of view, there were times were you only saw hills, and others you could hear the waves in the ocean.
Score for this section (Max 10pts)	9
ACCESSIBILITY (Max 10 pts)	
Is the walking route paved?	No, not all the sections are paved, and would be hard for someone with ADA to navigate it, also there are areas that are very narrow - only for walking
Are there areas where the walking route is not paved?	Yes about 90% of the walk is trail and/ gravel
Is the walking route ADA accessible?	No
Is there wayfinding signage to locate the walk? How about throughout the walk?	Yes, Regional trail signs
Is the walk family-friendly and/or dog friendly?	Yes - family and dog friendly
Reviewer Notes on this section	
Score for this section (Max 10pts)	6
AMENITIES (Max 10 pts)	8
Is there access to restrooms? <i>e.g. Where are the bathrooms located? At the beginning, middle, end of the walk?</i>	Yes, at the parking lot, there were bathrooms, there is a starbucks near by.
Is there access to drinking water?	Not sure
Are there benches through out the walk? <i>e.g. At the beginning, middle, end of the walk?</i>	Yes, there are benches through out the walk, and also at glen cove waterfront parkk
Does the walk have tree cover and/or areas with shade?	Tree shade at the start and by Glen cove, but not much throughout the trail

Reviewer Notes on this section	
Score for this section (Max 10pts)	8

Additional Reviewer Notes	
<p>Why should this walk be considered a Top Ten? <i>e.g. What stood out about this walk? Was it pleasant? Would you recommend others to try out this walk?</i></p>	<p>Access to the bay, hills, and also places to rest at glen cove to recover before heading back.</p>



Mare Island Historic Loop

2.2 mile loop through Historic Mare Island Naval Shipyard from Coal Sheds to St. Peters Chapel. Paved walk on sidewalks, streets and parking lots; by ferry terminal, historic drydocks, tree lined streets with historic mansions and new housing. Parking and restrooms at Coal Shed, largest collection of Tiffany Stained Glass Windows at St. Peters Chapel. Mare Island Brewing Company, Savage & Cooke Distillery and The Quarters Coffee House along the route.

PAC AD HOC WALK AUDITS ON

NAME OF REVIEWER	Dulce
NAME OF THE PROPOSED WALK	Mare Island Historic Walk
TOTAL SCORE (Max 40 pts)	30
How did you travel to the location?	Car
If you travel by car, was there a fee to park?	No fee
If so how much?	
Was there designated parking?	Yes
Was there ADA parking available?	Yes
How long did it take to complete the walk?	60

KEY ITEMS TO ASSESS DURING

PROXIMITY TO DESTINATIONS	
Is there scenic value to the walk?	Not as much as some of the other walks - mostly get to look at historical buildings/monuments in a nearby park
Does the walk pass by/connect to parks? Is so how many?	Yes - One park, which is also has like old tanks
Is there access to historical sites or city land marks?	Yes, access to historical sites. Downtown is across the water
Is there access to downtown?	
Reviewer notes on this section	The walk is a bit removed from other connections, it is by a ferry connection and there is a small coffee shop.
How would you rate this walk? (Max 10pts)	7
SAFETY AND COMFORT (Max	
Did you feel safe and/or comfortable walking the route?	Yes, I did feel safe walking the route.
Are there posted hours of use?	Was not able to find any posted hours of use
Is this a walk you would recommend during daylight and/or night time?	Daylight

PAC HOC WALK AUDIT SCORES

Number of Reviewers	1
Time taken to complete walk?	60
Overall Score	30
Proximity to Key Destinations Averaged Score	7
Safety and Comfort Averaged Score	8
Accessibility Averaged Score	8
Amenities Averaged Score	7

Are there light fixtures available throughout the walk? Do you think the walk will be well light during the night?	I can not remember if there were light fixtures, and if so I wouldn't be so sure how well they worked
Is there an adequate buffer between the pedestrian and single passenger vehicles?	Yes, most of the route had sidewalks
What is the pavement condition of the walk? Are there areas of concern?	Getting to the walking route there was no sidewalk and pavement could have been bumpy, however the walk itself was paved
What is the condition of pedestrian infrastructure? <i>e.g. are the crosswalks in need of restriping, are there bulb-outs at intersections, are there Rectangular Rapid Flashing Beacons and do they work?</i>	The infrastructure is there, there are crosswalks in the more urban area of the walks.
Reviewer Notes on this section	The walk was short, I went on a Monday morning and there were people walking/running around the area
Score for this section (Max 10pts)	8
ACCESSIBILITY (Max 10 pts)	
Is the walking route paved?	Yes
Are there areas where the walking route is not paved?	Yes, the walk from the parking lot to the actual walking route
Is the walking route ADA accessible?	Yes
Is there wayfinding signage to locate the walk? How about throughout the walk?	There is signage, not not so much around the walking route
Is the walk family-friendly and/or dog friendly?	Yes, there were people running and walking their dogs
Reviewer Notes on this section	The walk was shorter, and it was enjoyable.
Score for this section (Max 10pts)	8
AMENITIES (Max 10 pts)	
Is there access to restrooms? <i>e.g. Where are the bathrooms located? At the beginning, middle, end of the walk?</i>	I do not think so, there was a coffee shop that was open - there may have been restrooms there.
Is there access to drinking water?	No
Are there benches through out the walk?	There are some benches by the Park

<i>e.g. At the beginning, middle, end of the walk?</i>	there are some benches by the park.
Does the walk have tree cover and/or areas with shade?	Yes, there is tree cover/shade
Reviewer Notes on this section	Access to the bathroom may be limited, also the user would need to bring water
Score for this section (Max 10pts)	7

Additional Reviewer Notes	
Why should this walk be considered a Top Ten? <i>e.g. What stood out about this walk? Was it pleasant? Would you recommend others to try out this walk?</i>	The walk was enjoyable, there is shade and it would be great if others were aware of this part of Mare Island. What stood out was the historical significance to the place.

Laurel Creek Park to Paradise Valley Golf Course

3.3 mile out&back roundtrip from Laurel Creek Park to Paradise Valley Golf Course, with part along riparian corridor of McCoy Creek and the remainder along sidewalk along Dickson Hill Road and Dover Avenue to the Golf Course. Parking, restrooms and playground at Laurel Creek Park; parking and restaurant at the golf course. Could shorten walk to 2 miles by turning around at Dickson Hill Road.



PAC AD HOC WALK AUDITS

NAME OF REVIEWER	Michael	Dulce	Francesca	Andrea
NAME OF THE PROPOSED WALK	Laurel Creek to Paradise Valley	Laurel Creek	Laurel Creek	Laurel Creek
TOTAL SCORE (Max 40 pts)	8	30	28	32
How did you travel to the location?	Car	Car, though there is a FAST bus stop and a Class II bike lane on Cement Hill Road	Car	Transit
If you travel by car, was there a fee to park?	No	No	No	No fee to park
If so how much?				
Was there designated parking?	Yes	Yes	Yes at the park	Yes, designated parking
Was there ADA parking available?	Yes	Yes	Yes	Yes, at least 5 spots
How long did it take to complete the walk?	35 minute bike, 1hr 15min walk?	1 and 15 minutes (though I did speed walk some sections)	1 hour 20 minutes	1 hr20 min

KEY ITEMS TO ASSESS DURING

PROXIMITY TO DESTINATIONS

Is there scenic value to the walk?	Only McCoy Creek	middle section of the walk parallels the creek	Yes	Some of the segments have scenic value. It's okay after the walk starts to merge into the residential areas around Dickinson and Dover Ave
Does the walk pass by/connect to parks? Is so how many?	Starts in park	Yes, starts at the park	Yes, it goes from Laurel Creek park to McCoy Creek to a private gold course. It goes through 2 parks.	
Is there access to historical sites or city land marks?	Not evident	No	No	No
Is there access to downtown?	No	No	No	No
Reviewer notes on this section	Not very interesting	Not ver close to destinations, the walk is more urban (not a trail)		There's no commercial facilities in proximity
How would you rate this walk? (Max 10pts)	1	7	6	7

SAFETY AND COMFORT (Max

Did you feel safe and/or comfortable walking the route?	Yes	Yes	Yes	Yes
Are there posted hours of use?	In park 6am	The park has posted hours - Sunrise to Sunset	The park and goldf course have posted hours of use, but they vary.	No posted hours at main entrance, but there are schedules posted. There was a board at the northern entry oint with scheduled hours.
Is this a walk you would recommend during daylight and/or night time?	Not sure	Daylight	Recommended in the daylight, but during time when it is not very hot/during mid day. There is not shade in all spots.	I do not recommend the walk during daylight since there's sparse tree coverage. There's plenty of shade in common areas, but not throughout the trail.
Are there light fixtures available throughout the walk? Do you think the walk will be well light during the night?	No except for busy streets	Yes, though I am not sure how much light it would provide during the night, also the the trail by the creek was dark even with the daylight, there was tree growth.	There are light fixtures throughout the walk. However, some are broken or high up and not very bright.	There are some light fixtures on the west side of the trail end, east side has not as many light fixtures , but the trail is adjacent to the houses with have some light.
Is there an adequate buffer between the pedestrian and single passenger vehicles?	Adequate buffer but goes along busy streets	Yes Class I	In most parts of the walk there is a buffer, but some parts near the park do not have any.	Someparts of the walk have no buffer; Dickson Avenue has very narrow sidewalks and no buffer.
What is the pavement condition of the walk? Are there areas of concern?		It was average, there are sections were the pavement is more degraded/cracked	Pavement on the East side of Laurel creek is well paved and wide. On the West side however the paving stops halfway through. There is no walkway to go from one part to another. At this side, the West side walkway is skinny and unpaved.	Pavement is good and no areas of concern.

PAC HOC WALK AUDIT SCORES

Number of Reviewers	4
Time taken to complete walk?	77.5
Overall Averaged Score	24.5
Proximity to Key Destinations Averaged Score	5.25
Safety and Comfort Averaged Score	6.5
Accessibility Averaged Score	6.25
Amenities Averaged Score	6.5

What is the condition of pedestrian infrastructure? <i>e.g. are the crosswalks in need of restriping, are there bulb-outs at intersections, are there Rectangular Rapid Flashing Beacons and do they work?</i>	ok- not great	The pedestrian would need to cross at least three streets to continue the walk. The Intersections have cross walks and ADA ramps.	There are missing crosswalks in several locations and missing ADA compliant crossings. We would have to sometimes walk out of designated path to follow trail.	The crosswalks are not painted throughout the walk and some don't connect all four corners, just 2 (L Shaped)
Reviewer Notes on this section	Safe, but not interesting	I felt safe, there were many people on the trail, mostly walkers, also there was a small section between Linden Aveu and Dickson Avenue that was not paved and felt more like a trail + tree growth behind the neighborhood. The walk afterwards to the golf course was not too bad, just that it was not too interesting.		
Score for this section (Max 10pts)	3	8	7	8
ACCESSIBILITY (Max 10 pts)				
Is the walking route paved?	Not all- stay on teh east side of the McCoy Creek. West side is not paved.	About 90% of the walk is paved	Most areas of the path are paved, but some are not as stated above. This would make it difficult for someone in a wheelchair to get around.	Walking route is paved, alternate route along the creek is not.
Are there areas where the walking route is not paved?	About half of McCoy path is paved	Yes	Yes.	West side of teh creek is not paved
Is the walking route ADA accessible?	Yes	Not all part, such as the area that is not paved.	Not at all parts.	Walking route is ADA accessible
Is there wayfinding signage to locate the walk? How about throughout the walk?	No	No	There is little signage, but easy to get from one side of Laurel Creek to the other because it is a straight shot and only has one trail.	There is signage mostly for traffic and pedestrians, but no map or way finding throughout eh walk or within the park
Is the walk family-friendly and/or dog friendly?	Yes	Yes for both	Yes. I saw several families and people walking their dog while I was at the park.	The walk is family and dog friendly
Reviewer Notes on this section		A shorter version of the walk is accessible, alternative is to cut the walk short and loop back at Dickson Hill.		
Score for this section (Max 10pts)	2	8	6	9
AMENITIES (Max 10 pts)				
Is there access to restrooms? <i>e.g. Where are the bathrooms located? At the beginning, middle, end of the walk?</i>	In Laurel Creek park and at golf course	Laurel Creek Park, baseball section.	Yes. At the first park and finishing golfcourse there are restrooms. However, the park is the only restrooms that are available to the public without having a membership or having to pay.	Amenities available only at park.
Is there access to drinking water?	Not evident along the way	Not sure	Yes, but only at the park in the beginning.	There's a faucet near the picnic area under the gazebo, no drinking fountain at the playground or ot other areas of the park.
Are there benches throughout the walk? <i>e.g. At the beginning, middle, end of the walk?</i>	In park but not after	By the park, and at the start of the walk.	There are a few benches, but none by the golf course or the homes near there.	There are some benches throughout eht walk, but they are not under the shade.
Does the walk have tree cover and/or areas with shade?	Some along McCoy Creek	There is shaded, more along the creek.	There is tree cover in the park and the creek. It was missing in the other spots. Good tree cover near the creek.	Some shade, not a lot.
Reviewer Notes on this section			It was a nice walk and connected a park, school, creek, and golf course.	There should be more drinking fountains throughout the park, only ones are near the common area/picnic.
Score for this section (Max 10pts)	2	7	9	8
Additional Reviewer Notes				
Why should this walk be considered a Top Ten?				

<p><i>e.g. What stood out about this walk? Was it pleasant? Would you recommend others to try out this walk?</i></p>	<p>McCoy Creek segment is OKAY but beyond that Dickson Hill Rd and Dover Ave are busy streets and not interesting walking. I would not recommend this walk</p>	<p>If the trail is recommended for Top Ten, I would recommend shortening the walk to just the Creek Trail and not extending it to the Golf Course</p>	<p>I think that the walk did a good job connecting multiple amenities. I do not think thay it had to go all teh way to the golf course. Especially since it is private and not open to people without paying/ a membership. It would be better if it stopped at the end of the creek. I do with the West side of the creek was paved. It may not be ADA accessible. Other than that it is a very pretty walk.</p>	<p>I would recommend, this seems like a good walk that connects the neighborhoods in the area and offers amenities for different groups. The park seems to be well maintained, it is clean, and the playground has safety buffers so that kids don't go near the parking lot or the street.</p>
--	--	---	---	---

Benecia Community Park to Lake Herman

2.3 mile out & back roundtrip from Benecia Community Park to Lake Herman. Paved but steep descent down and climb back. Parking and restrooms at Park; also at Lake Herman. Scenic, dog friendly, good bird watching, popular walking trail.



PAC AD HOC WALK AUDITS ON

NAME OF REVIEWER	Dulce
NAME OF THE PROPOSED WALK	Benicia Community Park to Lake Herman
TOTAL SCORE (Max 40 pts)	19.75
How did you travel to the location?	Car
If you travel by car, was there a fee to park?	No fee
If so how much?	
Was there designated parking?	Yes
Was there ADA parking available?	Yes
How long did it take to complete the walk?	60 minutes

KEY ITEMS TO ASSESS DURING

PROXIMITY TO DESTINATIONS	
Is there scenic value to the walk?	You can see hills and the Lake throughout your walk. Also as you walk through, you are able to get closer to the lake and see different angles of it, at the mid point you are even able to get super close to the lake.
Does the walk pass by/connect to parks? Is so how many?	At the starting point there is a big park, it has play ground and various baseball fields.
Is there access to historical sites or city land marks?	Lake Herman, though the walk is removed from downtown
Is there access to downtown?	
Reviewer notes on this section	The walk is by a neighborhood, I did not spot any transit stops. The walk is not closer to other destinations other than the park.
How would you rate this walk? (Max 10pts)	6
SAFETY AND COMFORT (Max	
Did you feel safe and/or comfortable walking the route?	I had no issues with this walk. There were certain spots that had a major incline and I needed to support my mom because she did not want to fall/slip.
Are there posted hours of use?	The park has posted hours

PAC HOC WALK AUDIT SCORES

Number of Reviewers	1
Time taken to complete walk?	60
Overall Averaged Score	19.75
Proximity to Key Destinations Averaged Score	6
Safety and Comfort Averaged Score	7
Accessibility Averaged Score	5
Amenities Averaged Score	7

<i>Is this a walk you would recommend during daylight and/or night time?</i>	I would recommend in the daylight, this walk in the dark can be uncomfortable especially since its is removed and more isolated with no light fixtures, so I can only imagine how dark it could get. Though I went in the afternoon, I would recommend the walk in the early morning or during a 70 degree temperature since there is limited shade.
<i>Are there light fixtures available throughout the walk? Do you think the walk will be well light during the night?</i>	No light fixtures, only at the start of the walk where the play ground is.
<i>Is there an adequate buffer between the pedestrian and single passenger vehicles?</i>	Yes, there is no vehicle access.
<i>What is the pavement condition of the walk? Are there areas of concern?</i>	Most of the walk is paved, however there are sections were it is more gravel and people may be prone to slipping.
<i>What is the condition of pedestrian infrastructure?</i> <i>e.g. are the crosswalks in need of restriping, are there bulb-outs at intersections, are there Rectangular Rapid Flashing Beacons and do they work?</i>	No pedestrian infrastructure since the walk did not cross any streets
<i>Reviewer Notes on this section</i>	There were various families fishing and walking the route, and many more at the park. I would say the walk is fairly safe and comfortable if you are able bodied, it is not ADA compliant
<i>Score for this section (Max 10pts)</i>	7
ACCESSIBILITY (Max 10 pts)	
<i>Is the walking route paved?</i>	Yes, but not all the sections, some of them are gravel
<i>Are there areas where the walking route is not paved?</i>	Yes, as we got closer to the lake, the path was gravel
<i>Is the walking route ADA accessible?</i>	No
<i>Is there wayfinding signage to locate the walk? How about throughout the walk?</i>	At the park, but not so much throughout the walk
<i>Is the walk family-friendly and/or dog friendly?</i>	Yes
<i>Reviewer Notes on this section</i>	This walk is not ADA accessible
<i>Score for this section (Max 10pts)</i>	5
AMENITIES (Max 10 pts)	
<i>Is there access to restrooms?</i>	

<i>e.g. Where are the bathrooms located? At the beginning, middle, end of the walk?</i>	Yes, bathrooms at the park
Is there access to drinking water?	Not sure
Are there benches through out the walk? <i>e.g. At the beginning, middle, end of the walk?</i>	Yes, there were benches throughout the walk
Does the walk have tree cover and/or areas with shade?	Only tree cover by the beginning of the walk, and by the end of the Northern section
Reviewer Notes on this section	The walk has benches and bathroom access, there were also solar powered covered parking lots.
Score for this section (Max 10pts)	7

Additional Reviewer Notes	
Why should this walk be considered a Top Ten? <i>e.g. What stood out about this walk? Was it pleasant? Would you recommend others to try out this walk?</i>	Access to nature (hills and Lake Herman) is a calm relaxing time, the walk was not hard nor long and you do not need to worry about vehicles since they are not allowed there. The park is also looks fun with space for benches, and bathroom access. The walk is not ADA accessible however it is worth cosidering, it is a hidden gem not many may know of.



PAC AD HOC WALK AUDITS ON

NAME OF REVIEWER	Nat
NAME OF THE PROPOSED WALK	Mare Island San Pablo Bay Hiking Trail
TOTAL SCORE (Max 40 pts)	12
How did you travel to the location?	Car
If you travel by car, was there a fee to park?	No
If so how much?	
Was there designated parking?	Yes
Was there ADA parking available?	Yes
How long did it take to complete the walk?	80
KEY ITEMS TO ASSESS DURING	
PROXIMITY TO DESTINATIONS	
Is there scenic value to the walk?	Yes
Does the walk pass by/connect to parks? Is so how many?	No
Is there access to historical sites or city land marks?	Yes, old military base and history information along the route
Is there access to downtown?	
Reviewer notes on this section	There is no access to downtown
How would you rate this walk? <i>(Max 10pts)</i>	3
SAFETY AND COMFORT (Max 10)	
Did you feel safe and/or comfortable walking the route?	Yes, only during the day
Are there posted hours of use?	No posted hours
Is this a walk you would recommend during daylight and/or night time?	Would recommend during the day
Are there light fixtures available throughout the walk? Do you think the walk will be well light during the night?	No light fixtures

PAC HOC WALK AUDIT SCORES

Number of Reviewers	1
Time taken to complete walk?	80
Overall Averaged Score	12
Proximety to Key Destinations	3
Safety and Comfort Averaged Score	3
Accessibility Averaged Score	2
Amenities Averaged Score	4

<i>Is there an adequate buffer between the pedestrian and single passenger vehicles?</i>	No car access
<i>What is the pavement condition of the walk? Are there areas of concern?</i>	Arrows painted on trail can be repainted
<i>What is the condition of pedestrian infrastructure?</i> <i>e.g. are the crosswalks in need of restriping, are there bulb-outs at intersections, are there Rectangular Rapid Flashing Beacons and do they work?</i>	Walk is more trail - path is gravel.
<i>Reviewer Notes on this section</i>	Adequet buffer between trail and wildlife
<i>Score for this section (Max 10pts)</i>	3
ACCESSIBILITY (Max 10 pts)	
<i>Is the walking route paved?</i>	All gravel
<i>Are there areas where the walking route is not paved?</i>	Yes, most of the walk
<i>Is the walking route ADA accessible?</i>	No
<i>Is there wayfinding signage to locate the walk? How about throughout the walk?</i>	No wayfinding signs
<i>Is the walk family-friendly and/or dog friendly?</i>	Family friendly, no dogs allowed
<i>Reviewer Notes on this section</i>	
<i>Score for this section (Max 10pts)</i>	2
AMENITIES (Max 10 pts)	
<i>Is there access to restrooms?</i> <i>e.g. Where are the bathrooms located? At the beginning, middle, end of the walk?</i>	Portapotty by the entrance
<i>Is there access to drinking water?</i>	No
<i>Are there benches through out the walk?</i> <i>e.g. At the beginning, middle, end of the walk?</i>	About 4 benches throughout the walk
<i>Does the walk have tree cover and/or areas with shade?</i>	No

Reviewer Notes on this section	Would need to bring hat, water. This walk would need to be completed in times with little to no heat.
Score for this section (Max 10pts)	4

Additional Reviewer Notes	
<p>Why should this walk be considered a Top Ten? <i>e.g. What stood out about this walk? Was it pleasant? Would you recommend others to try out this walk?</i></p>	<p>The trail was scenic, there were interpretive panel along the walk. There were also multiple people walking the route.</p>

Rancho Solano

3.7-mile out&back roundtrip from B. Gale Wilson Middle School to Rancho Solano Golf Course. Parking at school parking lot, or if done in reverse, at golf course. Trail paved and hilly, following Rancho Solano Parkway through scenic hills and oak woodlands, homes and golf course. Restaurant at golf course, athletic club adjacent.



PAC AD HOC WALK AUDITS ON

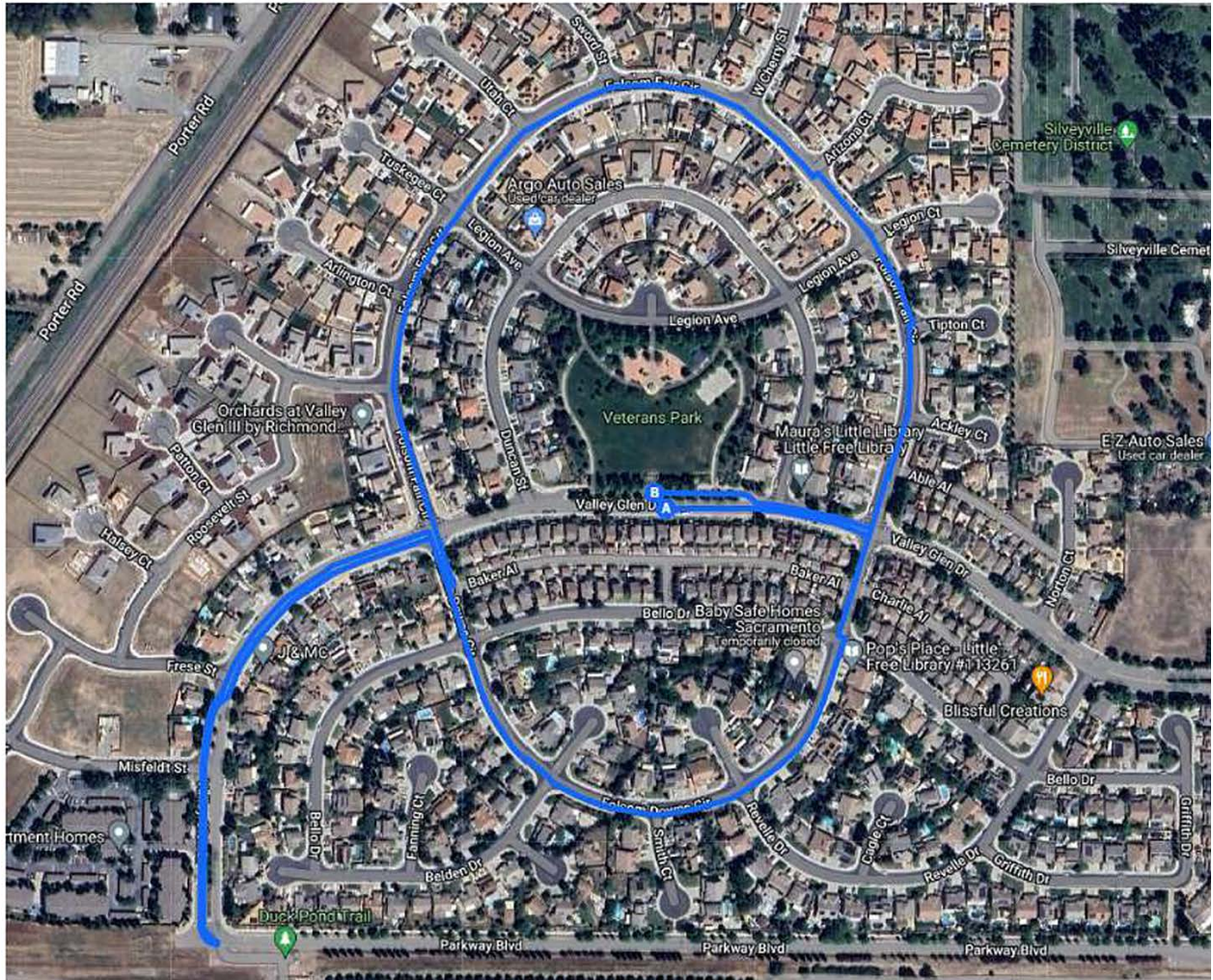
NAME OF REVIEWER	Michael
NAME OF THE PROPOSED WALK	Rancho Solano FW4
TOTAL SCORE (Max 40 pts)	25
How did you travel to the location?	Car
If you travel by car, was there a fee to park? If so how much?	No parked at B. Gale Wilson Middle School
Was there designated parking?	Yes
Was there ADA parking available?	Yes
How long did it take to complete the walk?	50 minutes by bicycle - maybe 2 hours walking
KEY ITEMS TO ASSESS DURING	
PROXIMITY TO DESTINATIONS	
Is there scenic value to the walk?	Medium
Does the walk pass by/connect to parks? Is so how many?	No , but golf course at end is a nice destination - beautiful course
Is there access to historical sites or city land marks?	No
Is there access to downtown?	No
Reviewer notes on this section	Follows Rancho Solano Parkway
How would you rate this walk? <i>(Max 10pts)</i>	5
SAFETY AND COMFORT (Max	
Did you feel safe and/or comfortable walking the route?	Yes
Are there posted hours of use?	No
Is this a walk you would recommend during daylight and/or night time?	Yes

PAC HOC WALK AUDIT SCORES

Number of Reviewers	1
Time taken to complete walk?	120 min
Overall Averaged Score	25
Proximety to Key Destinations Averaged Score	5
Safety and Comfort Averaged Score	7
Accessibility Averaged Score	7
Amenities Averaged Score	6

Are there light fixtures available throughout the walk? Do you think the walk will be well light during the night?	Yes
Is there an adequate buffer between the pedestrian and single passenger vehicles?	8 Ft sidewalk alongside Parkway
What is the pavement condition of the walk? Are there areas of concern?	Good
What is the condition of pedestrian infrastructure? <i>e.g. are the crosswalks in need of restriping, are there bulb-outs at intersections, are there Rectangular Rapid Flashing Beacons and do they work?</i>	Good, but no flashing lights crosswalk striping good
Reviewer Notes on this section	You are walking next to a parkway the entire walk. Safe, but not peaceful.
Score for this section (Max 10pts)	7
ACCESSIBILITY (Max 10 pts)	
Is the walking route paved?	Yes
Are there areas where the walking route is not paved?	No
Is the walking route ADA accessible?	Yes
Is there wayfinding signage to locate the walk? How about throughout the walk?	No - I asked security guard at kiask by entrance to middle school
Is the walk family-friendly and/or dog friendly?	Yes I saw several dogs
Reviewer Notes on this section	Easy walk, gradual slopes
Score for this section (Max 10pts)	7
AMENITIES (Max 10 pts)	
Is there access to restrooms? <i>e.g. Where are the bathrooms located? At the beginning, middle, end of the walk?</i>	At golf course

Is there access to drinking water?	At golf course
Are there benches through out the walk? <i>e.g. At the beginning, middle, end of the walk?</i>	2 or 3 max
Does the walk have tree cover and/or areas with shade?	Not much
Reviewer Notes on this section	Pleasant - Not exciting
Score for this section (Max 10pts)	6
Additional Reviewer Notes	
Why should this walk be considered a Top Ten? <i>e.g. What stood out about this walk? Was it pleasant? Would you recommend others to try out this walk?</i>	If you lived here, fine, but I would not travel any distance to take this walk. You are walking alongside a 2+ sometimes 4 lane parkway. 50% of the walk has open space on both sides. I spoke with a local resident who walks frequently - he and his wife walks it everyday. I saw 6-8 walkers between 11am-noon on a Tuesday.



PAC AD HOC WALK AUDITS ON

NAME OF REVIEWER	Joe	Michael	Francesca	Andrea
NAME OF THE PROPOSED WALK	Veterns Park	Veterns Park	Vetran's Park	Veteran's Park
TOTAL SCORE (Max 40 pts)	24	28	18	24
How did you travel to the location?	Car	Car	Car	Car
If you travel by car, was there a fee to park?	No, but limited parking in on-street seperated lane on Valley Glenn Dr.	No	No	No fee
If so how much?				
Was there designated parking?	Yes	Yes	Yes	Yes
Was there ADA parking available?	No	Yes	Yes	
How long did it take to complete the walk?	20 minutes for 1/3 of full walk; total estimated at 1 hour for full 3 mi	Only walked part way through neighborhood park itself was small	40 minutes	40 minutes
KEY ITEMS TO ASSESS DURING				
PROXIMITY TO DESTINATIONS				
Is there scenic value to the walk?	Little - on street sidewalk thru suburban neighborhood, with only short stretch through attractive but small neighborhood park	Not really	No. Just houses	No
Does the walk pass by/connect to parks? Is so how many?	Adjacent to Veteran's Park	Start at park loop through the neighborhoods. So many streets not much park to walk.	Just Veterans park, 1	No, 0
Is there access to historical sites or city land marks?	No	Not really	No	No
Is there access to downtown?	Approx 1 mi on City streets to Downtown	Not close	No	No direct access, 20 minute walk through neighborhoods
Reviewer notes on this section	On sidewalks through fairly new suburban neighborhood; small neighborhood park adjacent, but few amenities	Pleasant small park, the walk itself goes through neighborhoods.	Nothing nearby. Connects to multiple neighborhoods, but just the park	There's 4 little book sharing librarues at different location through the walks in the neighborhood.
How would you rate this walk? (Max 10pts)	3	4	3	5
SAFETY AND COMFORT (Max				
Did you feel safe and/or comfortable walking the route?	Yes	Yes	Somewhat. I went during the day, but very little people were out. Many neighbors looking at me.	Somewhat. I felt out of place walking in a neighborhood that is not mine.
Are there posted hours of use?	5am-11pm	5am-11pm	5am-11pm for the park	Only on the perimeter of the park 5am-11pm
Is this a walk you would recommend during daylight and/or night time?	Either day or night	Daylight ok, night not so interesting	During the daytime. Few streetlights and most are high up (not pedestrian friendly)	Night time or when it is cooler due to sun exposure. No trees and little sun cover.
Are there light fixtures available throughout the walk? Do you think the walk will be well light during the night?	Yes - street lights and on park path. Likely well lit at night	Not sure	Not super well lit on streets	Yes, probably well lit
Is there an adequate buffer between the pedestrian and single passenger vehicles?	Park path seperate from street; sidewalks adjacent to street and parked cars with frequent street crossings.	Yes	No, just walked on sidewalks next to wide neighborhood roads with fast cars.	Yes, sidewalks are fairly wide
What is the pavement condition of the walk? Are there areas of concern?	Ok- relatively new sidewalks	Good	Concrete - generally well-paved sidewalks	Good condition
What is the condition of pedestrian infrastructure? <i>e.g. are the crosswalks in need of restriping, are there bulb-outs at intersections, are there Rectangular Rapid Flashing Beacons and do they work?</i>	ADA curb ramps and striping at street crossings, but no bulb-outs or flashing beacons	Low traffic residential neighborhoods	Some sidewalks are striped, but many crosswalks are not present. Good ADA sidewalk connectors.	Very good, consistant throughout the walk. Crosswalks are not painted throughout and are only present at 4 way stops.

PAC HOC WALK AUDIT SCORES

Number of Reviewers	4
Time taken to complete walk?	46 min
Overall Averaged Score	23.5
Proximety to Key Destinations Averaged Score	3.75
Safety and Comfort Averaged Score	7.5
Accessibility Averaged Score	7
Amenities Averaged Score	5.25

Reviewer Notes on this section	Likely low traffic on streets, but possibility driving fast, no homeless in evidence		Just a walk in a neighborhood. Safer for cars, not really for pedestrians	Many political flags, "no soliciting signs", "beware of dog"
Score for this section (Max 10pts)	7	9	6	8, felt hostile
ACCESSIBILITY (Max 10 pts)				
Is the walking route paved?	Yes	Yes	Yes	Yes
Are there areas where the walking route is not paved?	No	Yes at duck pond	No	No
Is the walking route ADA accessible?	Yes	Yes	Yes, not all crosswalks are present, but paved and wide sidewalks.	Only one spot at the park
Is there wayfinding signage to locate the walk? How about throughout the walk?	No - just street signs; no obvious route unless have map or know the area.	No	No, just street signs/park signs	No
Is the walk family-friendly and/or dog friendly?	Yes	Yes	I saw one family and a few people walking dogs, yes	Yes
Reviewer Notes on this section	Sidewalks and paved path (in par) with curb ramps at crossings, but no obvious route or signage.	All accessible park and residential streets.		There are signs about dog poop, but no places to dispose of trash. Very clean and dense.
Score for this section (Max 10pts)	7	8	6	7
AMENITIES (Max 10 pts)				
Is there access to restrooms? <i>e.g. Where are the bathrooms located? At the beginning, middle, end of the walk?</i>	No	Yes, in the park	Yes. There is a porta potty at the park.	No
Is there access to drinking water?	Yes - fountain in Veterans Park	Yes, in the park	Yes, only at the park.	Only at park
Are there benches through out the walk? <i>e.g. At the beginning, middle, end of the walk?</i>	Yes, but only in park	Yes, in the park	No there are no places to stop in the neighborhood streets, just at the park	No, only at park
Does the walk have tree cover and/or areas with shade?	Shade trees and picnic shelter only in park; little to no on-street shade trees.	Yes, in the park	Very little tree cover in the neighborhood, some in the park.	No
Reviewer Notes on this section	Small park is pleasant, but limited facilities (play structure, picnic area, basketball court) no amenities on walks away from park.	Small park with limited amenities. The walk really is in the neighborhood loops.	Only the park has amenities and it is a small part of the walk. The neighborhood streets, which are the majority of the walk do not.	Not welcoming to visitors
Score for this section (Max 10pts)	7	7	3	4
Additional Reviewer Notes				
Why should this walk be considered a Top Ten? <i>e.g. What stood out about this walk? Was it pleasant? Would you recommend others to try out this walk?</i>	No - walk and small park might be good for people in the neighborhood, but it is not attractive to others.	One could park at the park and do loop through neighborhoods then continue Southwest or Valley Glen to end where there is a chain link fence an enclosed duck pond with an extensive unpaved loop around it. Level, unshaded, not especially scenic, but adequate for long walk or dog exercise. But overall this walk is not as pleasant as #1 DW1 Northwest Park.	I would not recommend this walk. It is simply a neighborhood sidewalks. Few amenities far from destinations and does not connect. There is little shade, no places to stop, and no aesthetic elements to the neighborhood part of the walk.	This should not be a top walk. It is a very quiet neighborhood. Not a lot of people walking or using park amenities. There are no restrooms, some people may feel uncomfortable on traveling distances just to come. Very limited on street parking.

THIS PAGE INTENTIONALLY LEFT BLANK



DATE: September 27, 2024
TO: STA PAC
FROM: Dulce Jimenez, Assistant Planner
RE: Comprehensive Transportation Plan (CTP) and Upcoming Subcommittee Meetings

Background:

The Solano Transportation Authority's (STA) Comprehensive Transportation Plan (CTP) serves as the primary long-range planning document that guides and prioritizes the STA's investments in transportation. It also serves as the foundational document from which transportation projects and programs are considered for the Metropolitan Transportation Commission's (MTC) Regional Transportation Plan (RTP) called Plan Bay Area (PBA).

Discussion:

The STA kicked off an update to the current CTP in January 2023 by forming committees for each of the CTP Elements: 1) Active Transportation Element, 2) Arterials, Highways and Freeways Element and 3) Transit and Rideshare Element. The CTP update was anticipated to be completed by December 2024; however, the schedule for completion is expected to be extended to 2025 due to additional tasks requested by the STA Board related to the CTP Transit Element. The latest Active Transportation Committee was held on July 17, 2024, subcommittee members approved recommending the Final Draft of the Active Transportation Element Goals and Objectives (Attachment B) to the STA TAC and for STA Board approval by the end of this year.

Due to the extended timeframe to complete the CTP update, schedule changes had to be made to the upcoming subcommittee meetings (Attachment A) with the next anticipated Active Transportation Committee scheduled for February 12, 2025, from 4:00-5:30 p.m.

Recommendation:

Informational.

Attachment:

- A. Comprehensive Transportation Plan Schedule and Committee Roster



Salerno Transportation Authority

COMPREHENSIVE TRANSPORTATION PLAN (CTP) MASTER ROSTER

Last Update: July 22, 2024

CTP SUB COMMITTEE & PURPOSE OF COMMITTEE	COMMITTEE MEMBERS & INVITED PARTICIPANTS	MEETING SCHEDULE / STA SUPPORTING STAFF
<p>ACTIVE TRANSPORTATION COMMITTEE</p> <p>Purpose: This policy committee makes recommendations to the STA Board for changes and updates to the Active Transportation Element of the Comprehensive Transportation Plan. It also recommends funding for Alternative Fuel and Capital Grants as well as other alternative modes funds.</p>	<p>Voting Members:</p> <ol style="list-style-type: none"> Alma Hernandez, City of Suisun City (<i>Chair</i>) Terry Scott, City of Benicia Jim Ernest, City of Dixon K. Patrice Williams, City of Fairfield Edwin Okamura, City of Rio Vista Greg Ritchie, City of Vacaville Peter Bregenzer, City of Vallejo Wanda Williams, County of Solano <p>Other Invited Participants:</p> <ol style="list-style-type: none"> Gretchen Bennett, YSAQMD Tyler Meirose, BAC Bob Berman, PAC Dave Belef, SR2S Advisory Committee Erin Morris, Planning Directors Rep Kara Oberg, MTC/ABAG Melissa Tigbao (Alternate:) TAC Representative Khatereh Afshar, Caltrans 	<p>In Person Meeting Schedule at STA: (*Confirmed / +To be Determined) *4:00p., Wed., March 20, 2024 *2:00p., Wed., July 17, 2024 *4:00p., Wed., February 12, 2025 *4:00p., Wed., May 14, 2025</p> <p>STA Lead Staff: <i>Robert Guerrero, Deputy Executive Director/Director of Planning</i> <i>Dulce Jimenez, Assistant Planner</i></p> <p>Meeting Clerks: <i>Johanna Masiclat</i> <i>Natalie Quezada</i></p>
<p>ARTERIALS, HIGHWAYS AND FREEWAYS COMMITTEE</p> <p>Purpose: This policy committee makes recommendations to the STA Board of Directors for changes and updates to the Arterials, Highways, and Freeways Element of the Comprehensive Transportation Plan as well as recommendations on corridor studies, such as the I-80/I-680/I-780 Major Investment & Corridor Study.</p>	<p>Voting Members:</p> <ol style="list-style-type: none"> John Carli, City of Vacaville (<i>Chair</i>) Steve Young, City of Benicia Steve Bird, City of Dixon Catherine Moy, City of Fairfield Ron Kott, City of Rio Vista Peter Bregenzer, City of Vallejo Princess Washington, City of Suisun City Mitch Mashburn, County of Solano <p>Other Invited Participants:</p> <ol style="list-style-type: none"> Dave Belef, BAC Teri Booth, PAC Matt Tuggle, TAC John McKenzie, Caltrans Captain Mike Lehman, CHP Rep. Lisa Klein, MTC 	<p>In Person Meeting Schedule at STA: (*Confirmed / +To be Determined) *4:00p., Wed., October 16, 2024 *4:00p., Wed., March 12, 2025 *4:00p., Wed., June 11, 2025</p> <p>STA Lead Staff: <i>Robert Guerrero, Deputy Executive Director/Director of Planning</i> <i>Nick Burton, Director of Projects</i> <i>Leslie Gould, Assistant Project Manager</i></p> <p>Meeting Clerks: <i>Johanna Masiclat</i> <i>Natalie Quezada</i></p>
<p>TRANSIT COMMITTEE</p> <p>Purpose: This policy committee makes recommendations to the STA Board of Directors for changes and updates to the Transit Element of the Comprehensive Transportation Plan as well as recommendations on corridor studies, such as the</p>	<p>Voting Members:</p> <ol style="list-style-type: none"> Robert McConnell, City of Vallejo (<i>Chair</i>) Terry Scott, City of Benicia Steve Bird, City of Dixon Catherine Moy, City of Fairfield Edwin Okamura, City of Rio Vista Alma Hernandez, City of Suisun City John Carli, City of Vacaville Mitch Mashburn, County of Solano <p>Other Invited Participants: 96</p> <ol style="list-style-type: none"> Jim Allison, CCJPA 	<p>In Person Meeting Schedule at STA: (*Confirmed / +To be Determined) *4:00p., Wed., September 18, 2024 *4:00p., Wed., April 9, 2025 *4:00p., Wed., July 9, 2025</p> <p>STA Lead Staff: <i>Robert Guerrero, Deputy Executive Director/Director of Planning</i> <i>Ron Grassi, Director of Programs</i> <i>Kathrina Gregana, Associate Planner</i></p>

CTP SUB COMMITTEE & PURPOSE OF COMMITTEE	COMMITTEE MEMBERS & INVITED PARTICIPANTS	MEETING SCHEDULE / STA SUPPORTING STAFF
I-80/I-680 Transit Corridor Study.	<ol style="list-style-type: none"> 2. Shruti Hari, MTC 3. Pippin Dew, WETA Board Member 4. Kevin Connolly, WETA 5. Diane Feinstein, Consortium Chair 6. Beth Kranda, SolTrans 7. Ruben Brunt, PCC 8. Susan Rotchy, CTSA 9. Lori DaMassa, Vacaville City Coach 10. Louren Kotow, Dixon Read-Ride 11. Brian Mclean, TAC Rep. 	<p><u>Meeting Clerks:</u> <i>Johanna Masiclat</i> <i>Natalie Quezada</i></p>

THIS PAGE INTENTIONALLY LEFT BLANK



DATE: September 27, 2024
TO: STA PAC
FROM: Dulce Jimenez, Assistant Planner
RE: Week Without Driving Challenge

Background:

As part of this challenge, participants are encouraged to get around however they like, as long as they do not drive themselves, which may include using transit, biking, walking and/or vanpooling – many of these alternative modes of transportation are provided by STA Solano Mobility Programs who serve our most vulnerable populations such as older adults, people with disabilities and veterans as well as students and commuters. The campaign aligns strongly with the mission of STA Solano Mobility programs that cater to the needs of older adults and people with disabilities/Veterans, and the Employer Commuter Programs. This also aligns with the focus of the Consolidated Transportation Services Agency (CTSA), Paratransit Coordinating Council (PCC) and the Equity Working Group by increasing awareness of the needs and challenges of priority populations and underserved communities. STA staff will be implementing the challenge to not only bring awareness of the mobility challenges of nondrivers but also to highlight the STA Solano Mobility Programs. While the event is for an entire week, we are asking individuals to take part in the challenge for at least one day to make participation easier.

Discussion:

STA staff are planning a series of events for Walk Month from September through October. This includes Solano Mobility holding activities to promote Transportation Demand Management (TDM) Week from September 16th - 20th and the Safe Routes to School Program organizing International Walk and Roll to School Day activities on Wednesday, October 9, 2024. STA Planning staff propose a partnership with the Solano Mobility Program and the Safe Routes to Schools Program to promote the first “**Week Without Driving Challenge**” campaign to complement the two other events as follows:

- TDM Week: September 16th – September 20th
- ***Week Without Driving Challenge: September 30th – 4th of October***
- International Walk and Roll to School Day: Wednesday, October 9, 2024

The Week Without Driving Challenge asks individuals to commit one day out of the week-long challenge to go completely car-free as they travel around their Solano community, as they put themselves in the shoes of individuals who don’t have driving as an option and who must rely on public transportation every day.

Recommendation:

Informational.

Attachment:

- A. Week Without Driving Challenge Flyer



WEEK WITHOUT DRIVING CHALLENGE



September 30th - October 4th, 2024

Celebrate California's Pedestrian Safety Walk Month in September by committing to go car-free for at least ONE day out of the week! Walk, bike, roll, carpool, or use public transportation to travel around your Solano community as you put yourself in the shoes of those who do not have driving as an option and who must rely on public transportation every day.



Microtransit Services



Solano County Intercity Taxi Card Program




Capitol Corridor



Walking/Biking

PARTICIPATION

Pledge to not drive for a day and tell us about your experience!



Participants will be entered to win a gift card.



San Francisco Bay Ferry



Travel Training



Not sure about your mobility options in Solano County?

Call STA's Solano Mobility Call Center:

(800) 535-6883

Solano Mobility Programs are available for all ages and abilities. For more information about STA Solano Mobility Programs, visit:

www.solanomobility.org



For document translation, please email:
 Para traducción de documentos, envíe un correo electrónico a:
 Para sa pagsasalin ng dokumento, mangyari lamang na magpadala ng email:
 Để có bản dịch của tài liệu, vui lòng gửi email về:
 如需文件翻譯, 請電郵:
iec@ie-center.org