

Active Transportation Committee Kick-Off Meeting

Robert Guerrero, Director of Planning

Dulce Jimenez, Planning Assistant

May 10, 2023



Meeting Agenda

1. Committee Member Introductions
2. Comprehensive Transportation Plan Schedule and Purpose
3. Overview of the Active Transportation Element
4. Safe Routes to School Program and Plan
5. Active Transportation and Land Use
6. Committee Member Round Table Discussion
7. Future Topics

Meeting Objectives



Introduce the Comprehensive Transportation Plan (CTP) Update Effort and Active Transportation (AT) Element Development Process



Provide an overview of Active Transportation-Related Plans and Programs



Set the stage for Transformative Active Transportation Projects

Active Transportation Committee Members

Policy Board Members:

1. Alma Hernandez, City of Suisun City (**Chair**)
2. Terry Scott, City of Benicia
3. Jim Ernest, City of Dixon
4. K. Patrice Williams, City of Fairfield
5. Edwin Okamura, City of Rio Vista
6. Jeanette Wylie, City of Vacaville
7. Peter Bregenzer, City of Vallejo
8. Wanda Williams, County of Solano

Representatives:

1. Gretchen Bennett, YSAQMD
2. Tyler Meirose, BAC
3. Bob Berman, PAC
4. Dave Belef, SR2S Advisory Committee
5. Erin Morris, Planning Directors Rep
6. Kara Oberg, MTC
7. Paul Kaushal, TAC Representative
8. Katera Afshar, Caltrans



STA's Advisory Committee Members

Bicycle Advisory Committee (BAC)

- Nancy Lund- Benicia
- Dave Belef- Vallejo
- Jodie Stueve- Dixon
- Dennis Elliott- Rio Vista
- **Tyler Meirose- Suisun City**
- Neal Iverson- Vacaville
- Mike Segala- Solano County
- Jason Gray- Member-At-Large

Safe Routes to School (SR2S) Advisory Committee

- Mitchell Romano- Vallejo School District
- Jeff Henderson- Suisun City Police Dept
- Karin Bloesch- YSAQMD
- **David Belef- BAC**
- Gwen Owens- Vacaville
- Tina Tran- Fairfield
- Diane Dooley- PAC
- Jennifer Leonard- Solano County Office of Education
- Dail Montañez- Solano County Public Health

Pedestrian Advisory Committee (PAC)

- **Bob Berman- Bay Area Ridge Trail**
- Dian Dooley- Benicia
- Joseph Green- Heffern- Fairfield
- Michael Hayes- Rio Vista
- Teresa Booth- Vallejo
- Joseph Joyce- Solano County
- Cookie Powell- Dixon



Date	CTP Subcommittees Schedule Line Up
May 10, 2023	Active Transportation Committee Kick-off <ul style="list-style-type: none"> • Informational Meeting- Background to the CTP and Active Transportation Element
June 14, 2023	Arterials/Highway/Freeway Committee Kick-off
July 12, 2023	Transit Committee Kick-off
October 11, 2023	Active Transportation Committee <ul style="list-style-type: none"> • Active Transportation Funding • Draft of project priorities
December 13, 2023	Arterials/Highway/Freeway Committee
January 10, 2023	Transit Committee
April 10, 2024	Active Transportation Committee <ul style="list-style-type: none"> • Final draft list of project priorities
May 8, 2024	Arterials/Highway/Freeway Committee
June 12, 2024	Transit Committee
Fall 2024	*Possible Fourth Committee* Wrap up the CTP Completion

Comprehensive Transportation Plan

- Foundational document for Transportation Projects and Programs to be eligible for STA's discretionary funding and support
- Includes the following elements and chapters:
 - 🚲 **Active Transportation Element**
 - 🛣️ Arterials, Highways and Freeways Element
 - 🚌 Transit and Rideshare Element
 - 🗺️ Land Use Chapter
 - ♿️ Equity Chapter
- Transportation Projects and Programs identified in the CTP are also eligible to be included in MTC's Regional Transportation Plan called Plan Bay Area 2050



Active Transportation Concepts in the Comprehensive Transportation Plan

- Complete Streets framework
- Sustainable transportation network
 - Integrating transportation and land use while planning to include the unique needs of Solano's residents and communities
- Reducing the Greenhouse Gas (GHG) emissions



Role of the Active Transportation Committee

- Assisting in guiding the development of the Element and Chapters that will contribute to the update of the Transportation Priority Projects and Programs for Solano County.
- Committee members are encouraged to engage with their respective city staff to understand their community's project priorities
- **Active Transportation Projects** will be the main focus of this committee



What is Active Transportation?

A means of getting around that is powered by non-motorized forms of travel, such as walking, biking, or rolling.



The Active Transportation Committee will focus on the bicycle and pedestrian infrastructure in Solano County.



STA's Role: Plan, fund, and deliver active transportation infrastructure for Solano County residents of all ages and abilities to feel comfortable walking and biking.

Why Focus on Active Transportation?

State's aggressive Greenhouse Gas Emissions Goals

- Target of cutting 48% of GHG below 1990 levels by 2030
- Sustainable Communities Strategy
- Switch from Level of Service (LOS) to Vehicle Miles Traveled (VMT)

Benefits to Solano County Residents

- Lower cost means of transportation for commuting and recreational activity
- Increases physical activity among Solano residents

Greater focus on Clean Air Projects for key Federal, State and Regional funding programs

Setting the Stage for Transformative Projects: Recent Policies and Areas of Focus

Developing a Active Transportation Network for All Ages and Abilities

- Complete Streets Policies

Bicycle and Pedestrian Safety

- Vision Zero Policies, Local Road Safety Plan, and Safe Streets for All Grant Program

First and Last Mile Connections

- Enhance connectivity to mobility hubs that link to local or regional centers by providing alternative modes of travel to the mobility hubs

Equity Focus

- Equity Designations such as Equity Priority Communities, Disadvantaged Communities, Areas of Persistent Poverty

Solano Rail Hub Project

1 mile

Downtown Fairfield

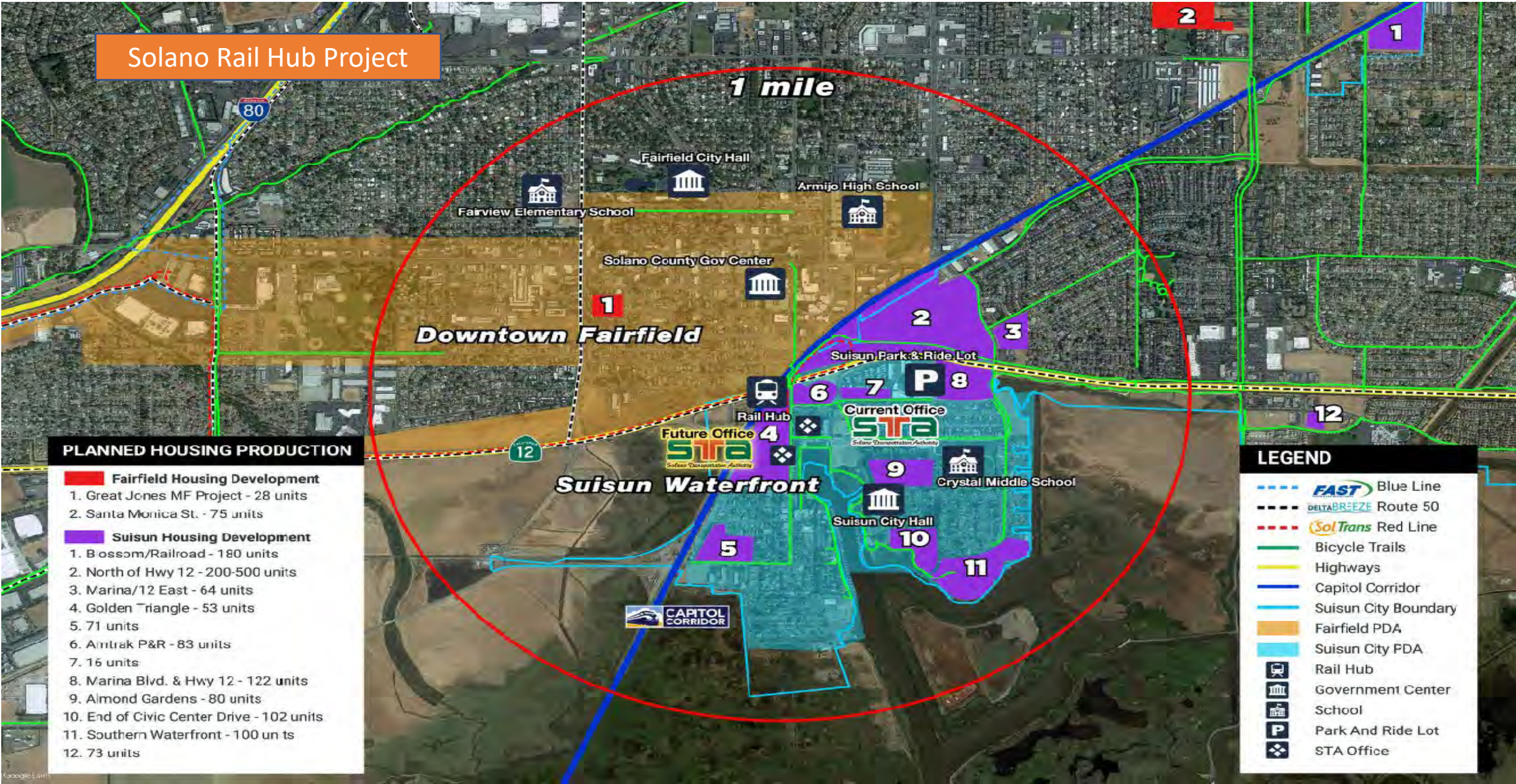
Suisun Waterfront

PLANNED HOUSING PRODUCTION

- Fairfield Housing Development**
- 1. Great Jones MF Project - 28 units
- 2. Santa Monica St. - 75 units
- Suisun Housing Development**
- 1. Bossom/Railroad - 180 units
- 2. North of Hwy 12 - 200-500 units
- 3. Marina/12 East - 64 units
- 4. Golden Triangle - 53 units
- 5. 71 units
- 6. Amtrak P&R - 83 units
- 7. 16 units
- 8. Marina Blvd. & Hwy 12 - 122 units
- 9. Almond Gardens - 80 units
- 10. End of Civic Center Drive - 102 units
- 11. Southern Waterfront - 100 units
- 12. 73 units

LEGEND






- FAST** Blue Line
- DELTA BREEZE** Route 50
- SolTrans** Red Line
- Bicycle Trails
- Highways
- Capitol Corridor
- Suisun City Boundary
- Fairfield PDA
- Suisun City PDA
- Rail Hub
- Government Center
- School
- Park And Ride Lot
- STA Office



Heart of Fairfield Plan Area



Legend

-  Plan Area
-  Major Highway and Roads
-  Rail
-  Fairfield Transportation Center
-  Suisun-Fairfield Amtrak Station



Travis Safe Routes to School
Planned Project

MD GRANT USAF
MEDICAL CENTER

GOLDEN WEST
MIDDLE SCHOOL

VANDEN
HIGH SCHOOL

DeRonde Dr.

Parker Rd.

Markeley Ln.

Markeley Ln.

CENTER
ELEMENTARY
SCHOOL

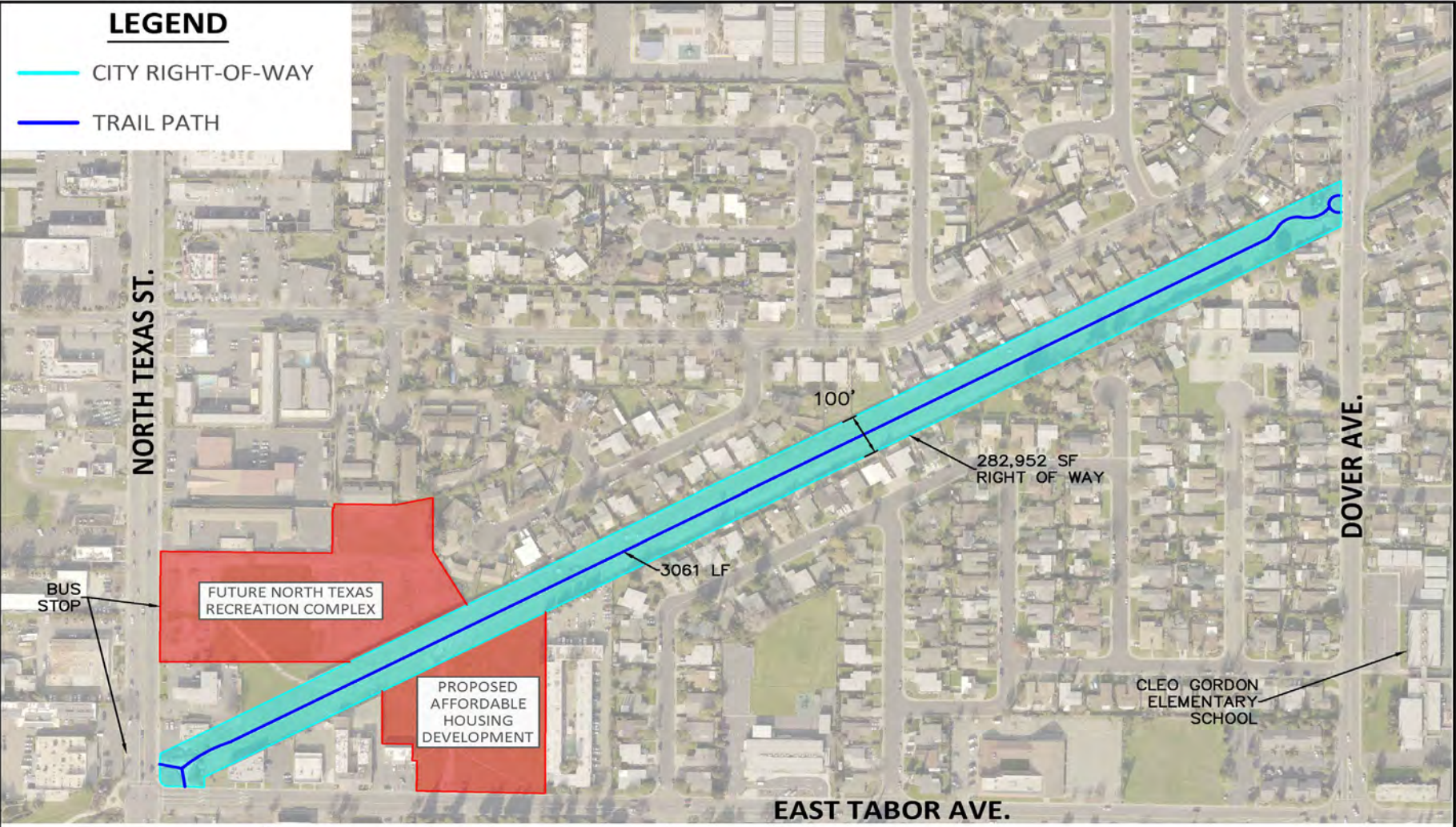
2
PROPOSED CLASS I
PEDESTRIAN

PROPOSED CLASS II
BIKE AND



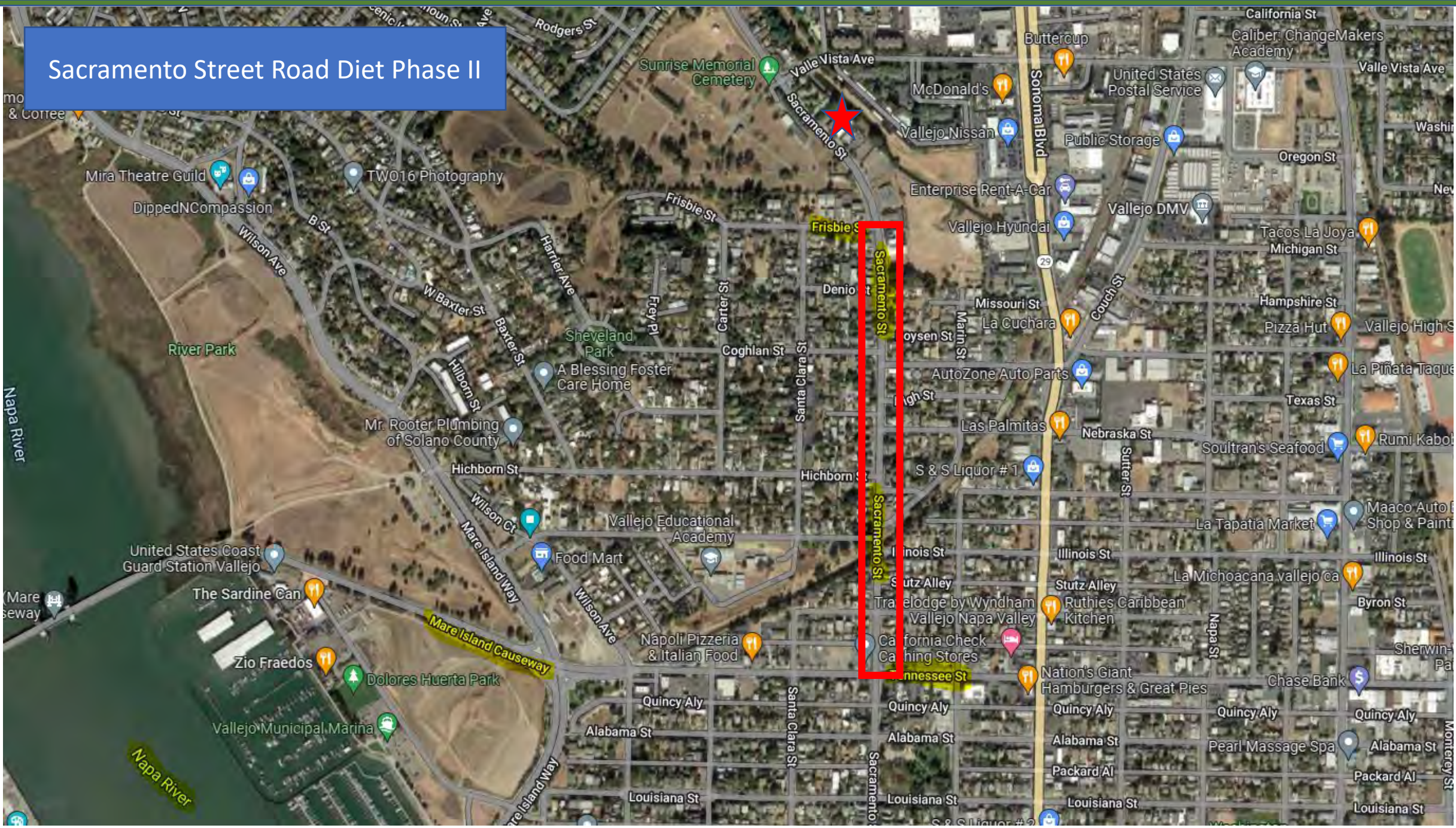
VACAVILLE
STATION

Linear Park Node Project Phase 4



<p>THIS LINE IS 1 INCH AT FULL SCALE</p>	<p>CITY OF FAIRFIELD PUBLIC WORKS ENGINEERING DIVISION 1000 WEBSTER ST, 3rd FLOOR, FAIRFIELD, CA 94533</p>		<p>LINEAR PARK TRAIL CONCEPTUAL EXHIBIT</p>	
<p>HORIZONTAL: _____ VERTICAL: _____</p>				

Sacramento Street Road Diet Phase II



State Route 37 Fairgrounds
Interchange



Completed Active Transportation Projects Since 2018

This is not the full list of completed projects

- Benicia- Rose Dr, from Columbus Pkwy to Palace Ct, Class II Bicycle Lane Fairfield- Travis Safe Routes to School and Transit Project
- Suisun Grizzly- Island Trail, complete class I multi-use path
- Solano County- Midway Road Bike Improvements, add Class II Bike
- Vaca-Dixon Bikeway Phase 6 Porter Road Bikeway Project
- Rio Vista Montezuma Hills Road Project
- Benicia Panorama Drive Safety Project
- Safe Routes to School Microgrant Cycle 1
- Suisun City Rail Road Avenue Bicycle Lanes Project (TDA)-Completed in Fall 2022
- Suisun City Crystal Middle School Traffic Calming- Completed in Fall 2022
- Solano Farm 2 Market and Solano County Road Preservation were completed in September 2022

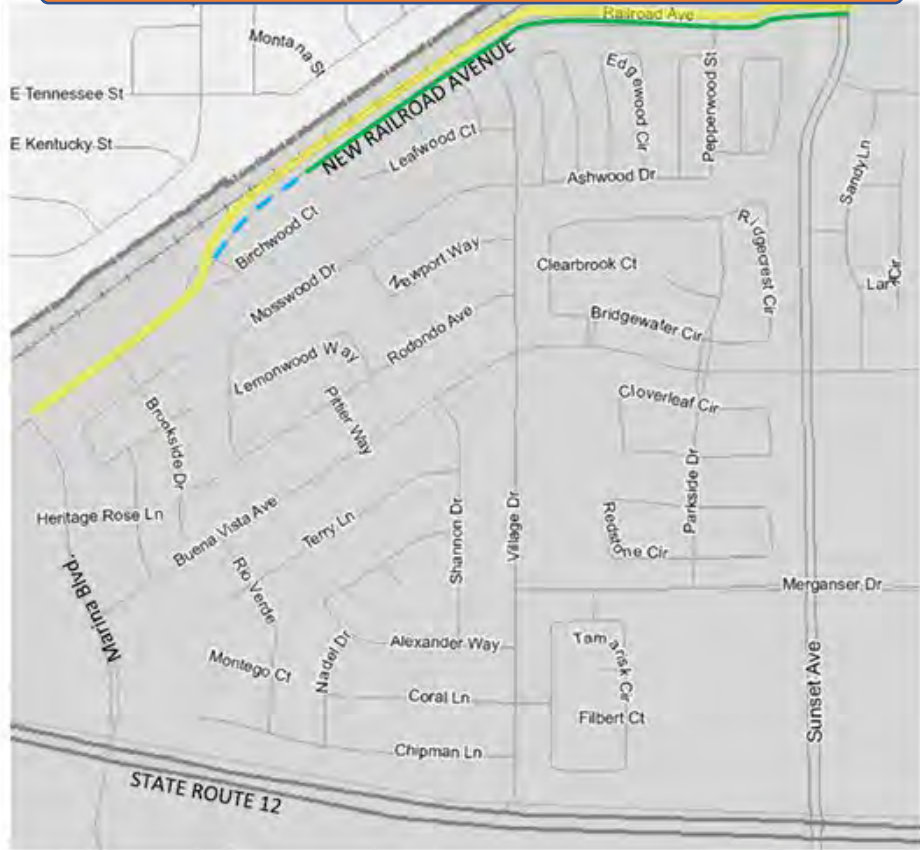
Heart of Fairfield Plan Area



Benicia-Military West Project



Suisun City Railroad Pavement Rehabilitation Project-Completed in Fall 2022



LEGEND:

ASPHALT CONCRETE OVERLAY AND DIGOUT REPAIRS, EASTBOUND LANES ONLY

DIGOUT REPAIRS, EASTBOUND LANES ONLY

5' WIDE BICYCLE LANE WITH 2' WIDE STRIPED BUFFER ZONES, BOTH SIDES OF STREET



Vacaville- Marshal Road RRFB



Benicia Joe Henderson RRFB SR25
Microgrant Cycle 2



Dixon Green Bike Lane Project



Benicia Panorama Drive Pedestrian Bulb
Out

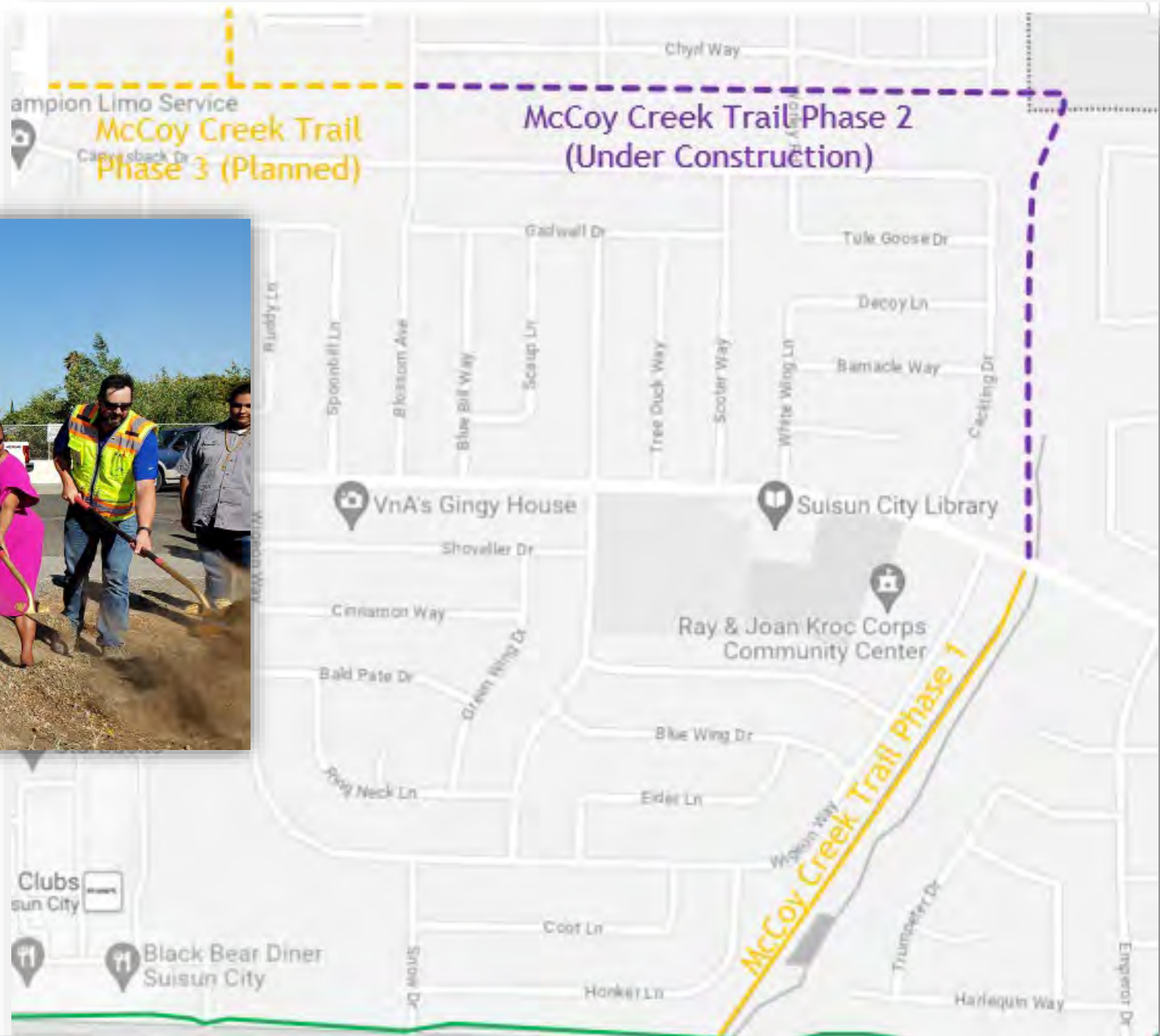


Suisun City Crystal Middle School Traffic
Calming Project





Suisun City McCoy Creek Ribbon Cutting- Fall 2022



Active Transportation Projects in Progress

This is not the full list of in-progress projects

- Vacaville- Kairos School Improvements, install RRFB, crosswalk striping, curb improvements (Initial phase complete)
- Vallejo- Bay Trail/Vine Trail Project
- Suisun City McCoy Creek Phase II
- Dixon- SR-113 Pedestrian Improvements at B Street, installing bulb-outs and pedestrian crossings
- Rio Vista Airport Road Bicycle and Pedestrian Promenade, sidewalk gap closure with class IV bike and pedestrian facility
- Vallejo Sacramento Street Road Diet Phase II
- Benicia Military East/East 5th Street Pedestrian and Bicycle Safety Improvements Project
- County of Solano Rockville Parks Crossing Project
- Vacaville Markham School Pedestrian Improvements Project
- Rio Vista Bike Lanes on Norman Richardson Drive and Airport Road
- Solano County Pedrick Road Bicycle Improvements

Questions?

Agenda Item 5.B

Overview of the Active Transportation Element

Dulce Jimenez, Planning Assistant

Components to the Active Transportation Element

The Active Transportation Element focuses on bicycle and walking infrastructure, Safe Routes to School, Safe Routes to Transit, as well as Alternative Fuels and Land Use Policies.

- Identifies Countywide Bicycle and Pedestrian Networks
- Overview on potential Alternative Fuels and EV Charging Stations
- Incorporates Sustainable Communities Development
- Assesses Bicycle and Pedestrian Projects and Priorities
- Identifies potential funding programs to match projects



State and Regional Related Plans to the Active Transportation Element

This is not a full list of Plans related to the Element



Plan Bay Area 2050

Long-range Plan developed and adopted by the Metropolitan Transportation Commission and the Association of Bay Area Governments (ABAG) that lays out a more equitable and resilient future for Bay Area Residents.



Plan Bay Area 2050- Four Main Elements

Housing

- Protect and Preserve Affordable Housing
- Spur Housing for Residents of all income levels
- Create Inclusive Communities

Economy

- Improve Economic Mobility
- Shift location of jobs

Transportation

- Maintain and optimize the existing system
- Create healthy and safe streets
- Build a Next generation transit network

Environment

- Reduce risks and hazards
- Expand access to parks and open spaces
- Reduce climate emissions

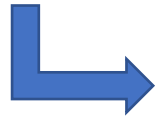
MTC's Regional Active Transportation Plan

In 2020 MTC initiated work on a regional Active Transportation Plan, intended to serve as a blueprint to strategically guide active transportation policy and investments



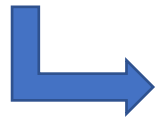
Developing an Active Transportation Network for All Ages and Abilities

- Complete Streets Network, including the construction of 10,000 miles of new bike lanes and multi-use paths



Bicycle and Pedestrian Safety

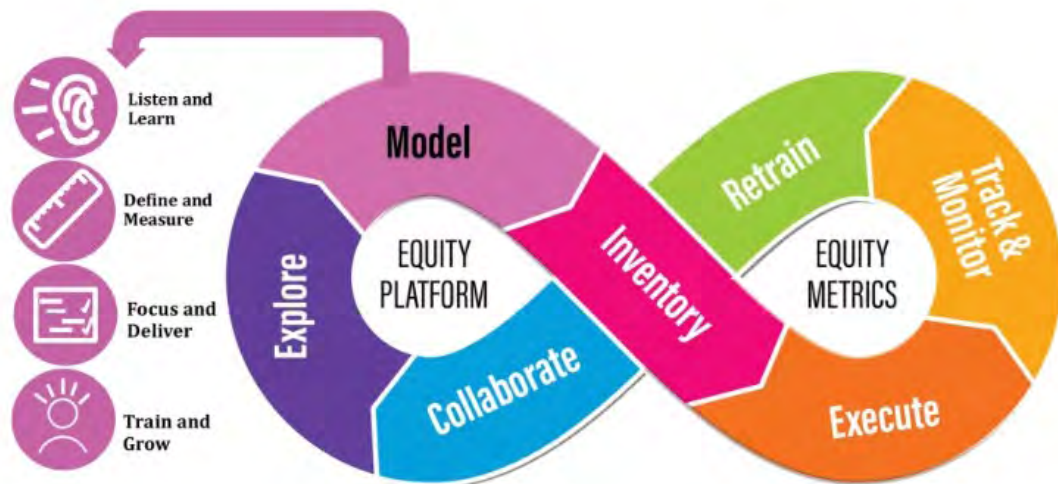
- Safety polices enacted at the local and regional levels in accordant to MTC's adopted Vision Zero Policy



Equity Focus

Plan Bay Area 2050- Equity Focus

The 35 identified strategies are centered advancing equity, through careful considerations of investments and policies that affect historically and systematically marginalized communities.



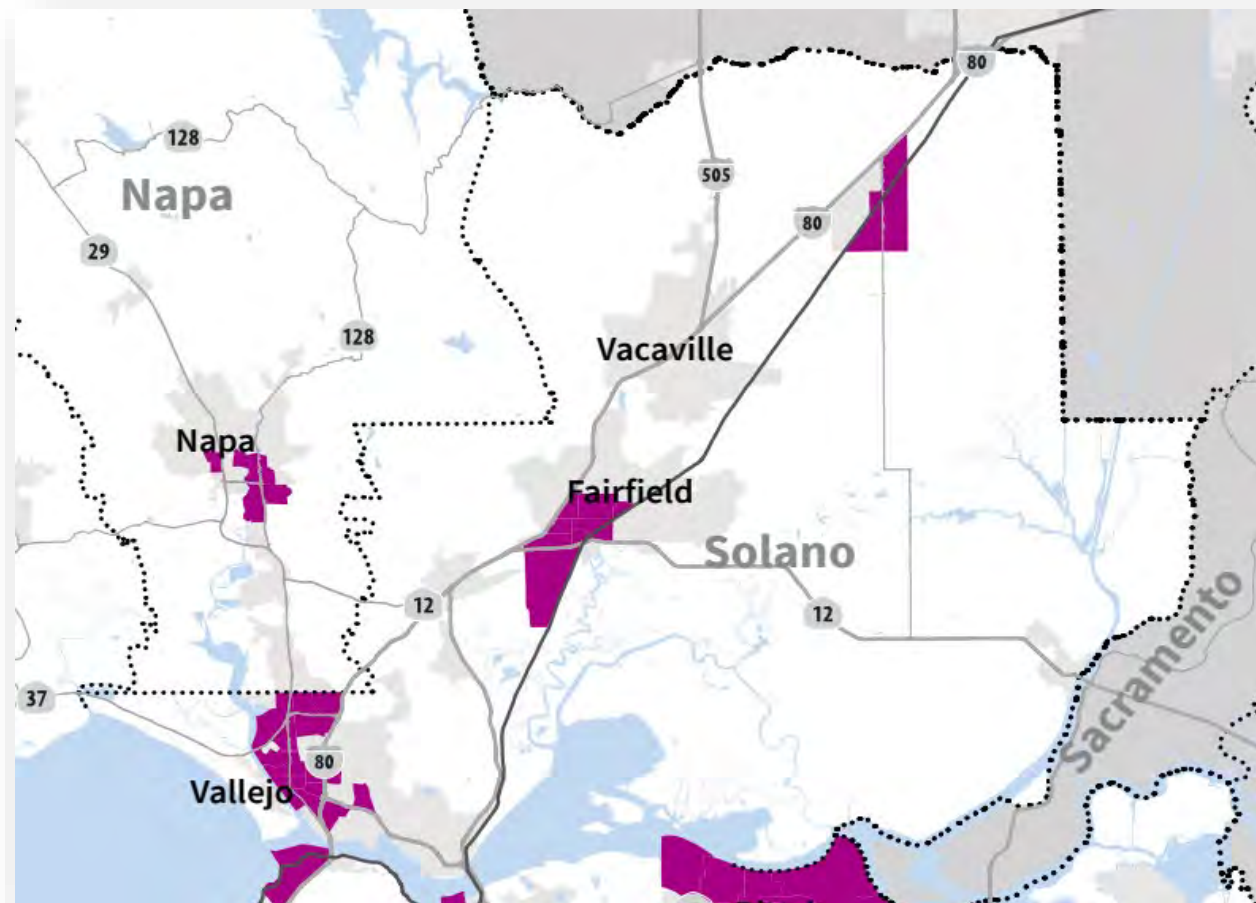
MTC Equity Definition:
Just inclusion in the Bay Area
where everyone can participate,
prosper and reach their full
potential



Plan Bay Area 2050

Equity Priority Communities:

Geographic areas that have a concentration on both residents of color and residents with low-income and other factors such as seniors or people with disabilities, areas with low proficiency in English.



Caltrans District 4 Bike Plan

The State highway system, is a multimodal network of Caltran's owned and operated State highways/Interstate Freeways, park ride lots and bridges.

Caltrans D4 Plan builds on the California State Bicycle and Pedestrian Plan known as Active California, which focus on the following four broad goals:

Safety: Reduce number, rate and severity of bike/ped collisions

Mobility: Increase walking and bicycling in CA

Preservation: Maintain a high-quality active transportation system

Social Equity: Invest resources in communities that are most dependent of active transportation



Caltrans District 4 Bike Plan- Role of Caltrans in Active Transportation

Role in connecting and expanding the regional bicycle network and removing barriers to bicycling

Identifies infrastructure improvements that can enhance bicycle safety and mobility throughout District 4

Prioritize safety and comfort while incorporating social equity when designing bicycle facilities

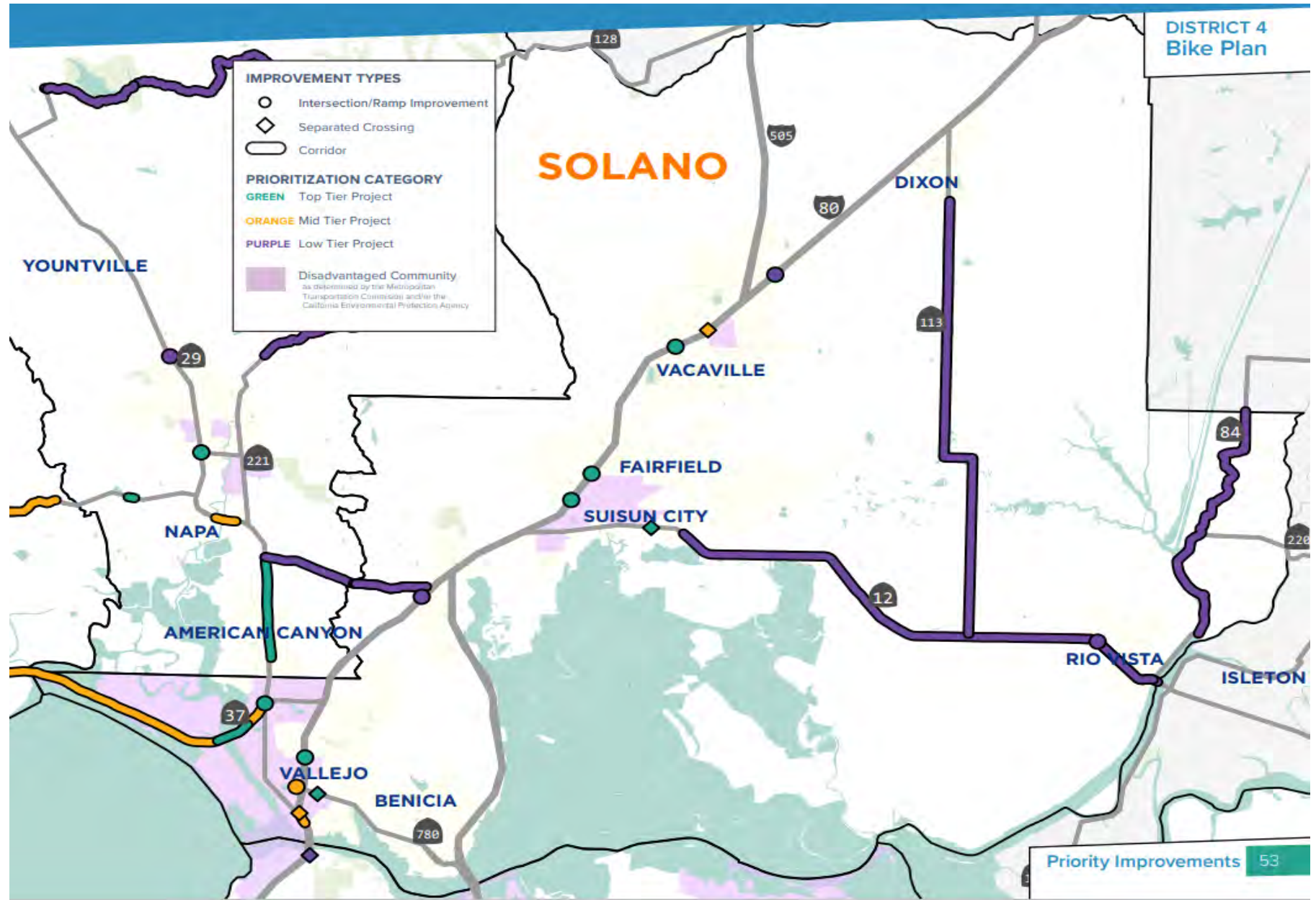
Plan informs future investments and identifies/prioritizes bicycle improvements on the State network that will be competitive for state/regional funds

Reduce Traffic Congestion

Improve Public Health

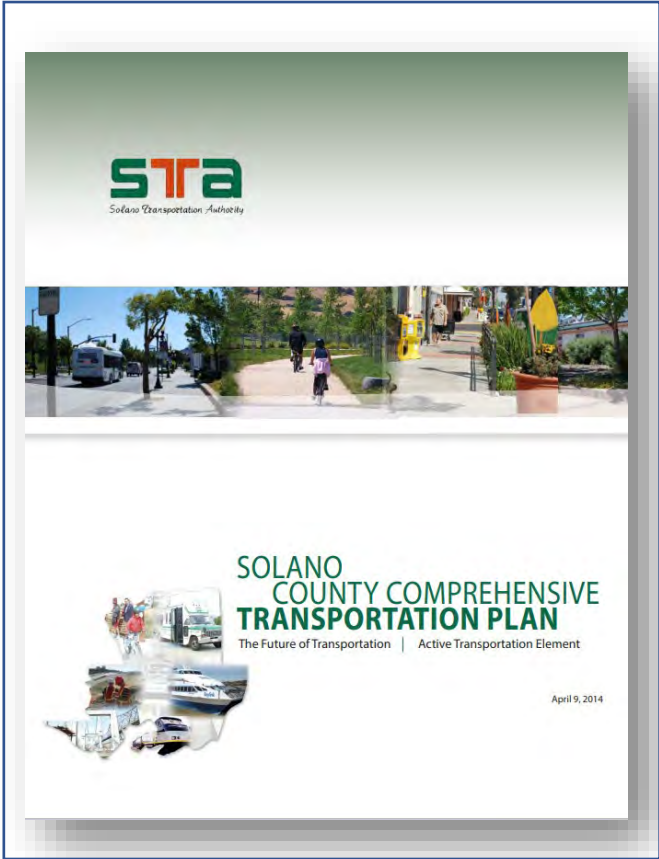
Create Connections to Key Destinations

2018 Caltrans D4 identified Top Tier Projects for Solano County



Local Related Plans to the Active Transportation Element

This is not a full list of Plans related to the Element



2013 STA
Alternative
Fuels Study

2013 Safe
Routes to
School Plan

2016 STA PCA
Plan: Access
to Parks and
Community
Hubs

2018 Solano
Electrical
Vehicle
Transition
Program

2020 SR 37
Public Access
Plan

2020 Active
Transportation
Plan

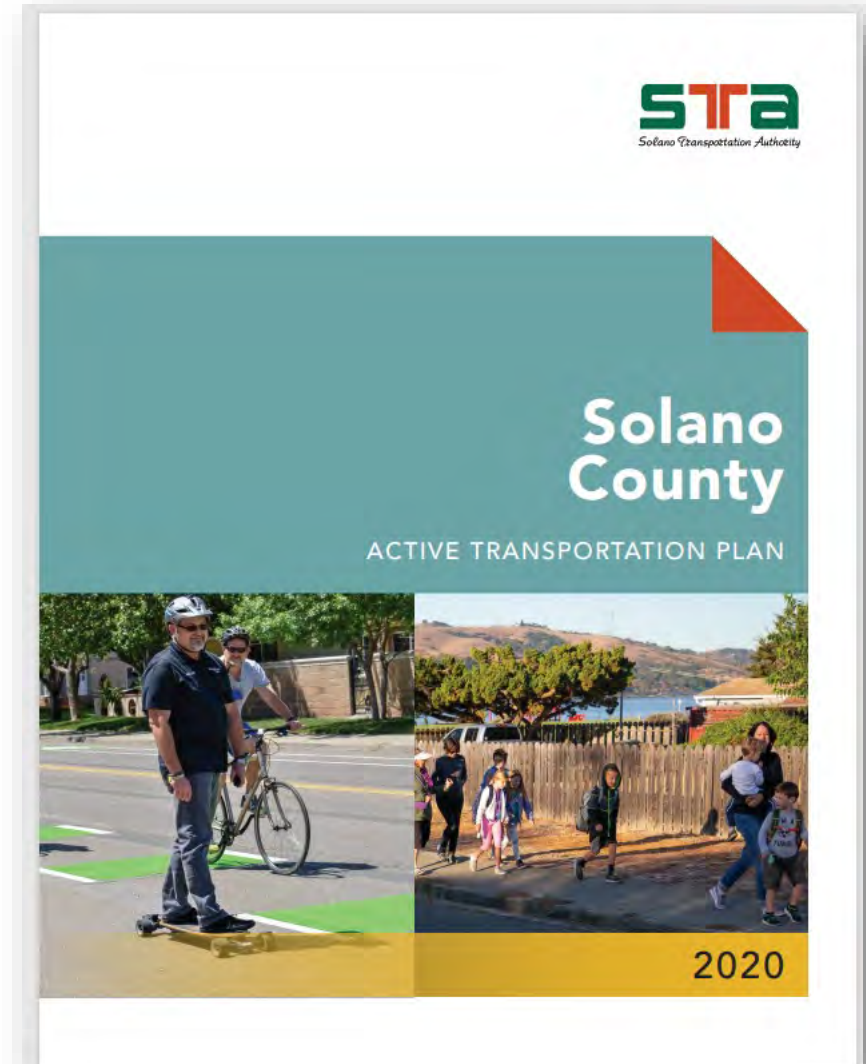
2023 Safe
Routes to School
Plan Update In
Progress

2020 Active Transportation Plan

The Active Transportation Plan (ATP) provides a framework to help STA improve Active Transportation conditions throughout Solano County, the plan also builds on previous plans:

- Countywide Bicycle and Pedestrian Plans
- Safe Routes to School (SR2S)
- Safe Routes to Transit (SR2T)

The development of the ATP plan was completed in 2020



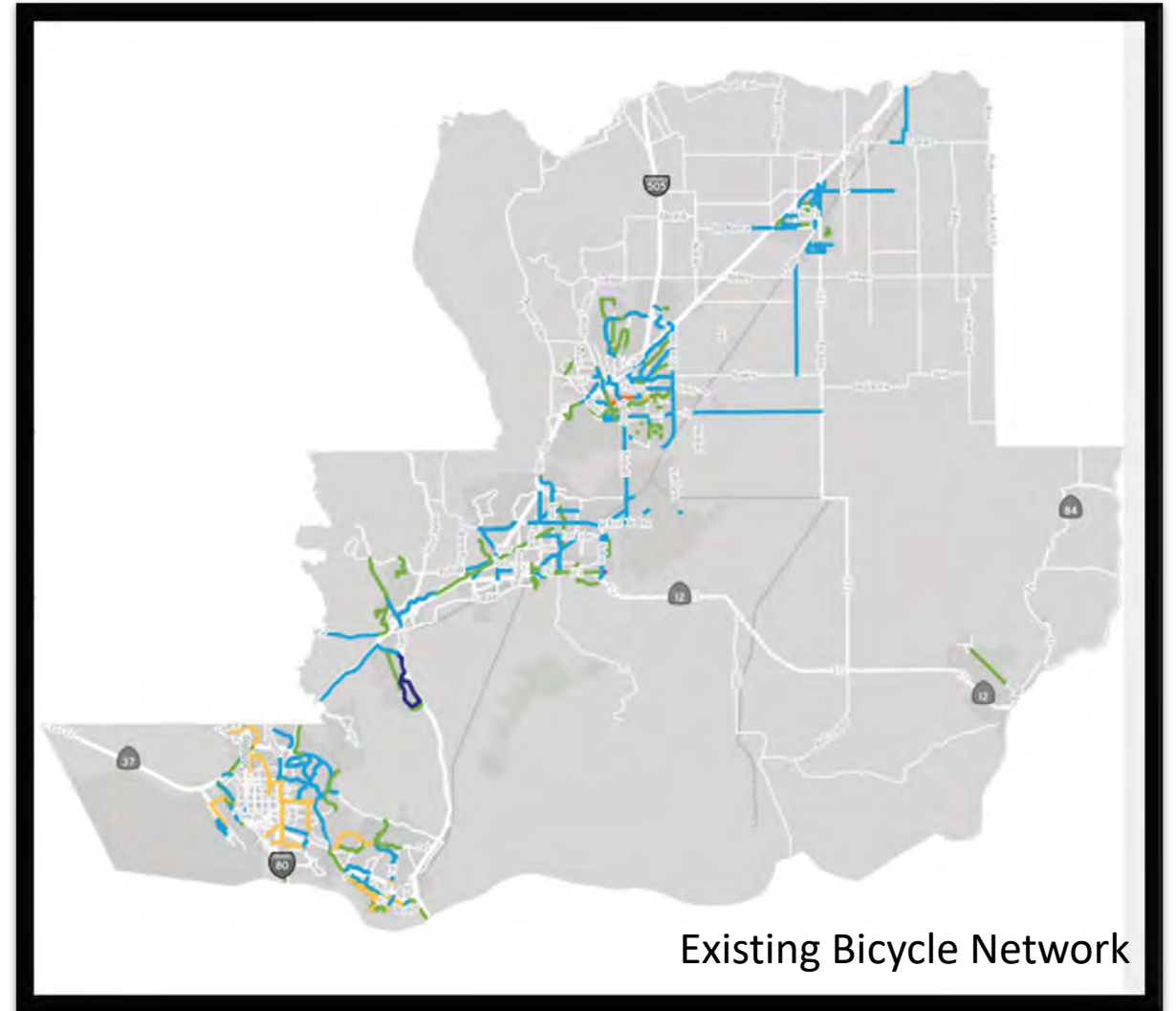
2020 Active Transportation Plan (ATP)

The ATP Plan establishes countywide priorities and provides project lists and program guidance that STA and local jurisdictions can use to help people of ages and abilities feel comfortable walking and bicycling.

The Solano ATP is used as a basis from which future bike and pedestrian projects are selected and prioritized by STA for grant funding sources

- 312 bikeway projects
- 148 pedestrian projects

In May 2022 and additional 39 projects were adopted to be included into the Active Transportation Plan.



2020 Active Transportation Plan- Types of Users



Comfort Typology of Bicyclists

Design User Profile	Non-Bicyclist	Interested but Concerned	Somewhat Confident	Highly Confident
Bicycling Preferences	Uncomfortable bicycling in any condition, have no interest in bicycling, or are physically unable to bicycle.	Often not comfortable with bike lanes, may bike on sidewalks even if bike lanes are provided; prefer off-street or separate bicycle facilities or quiet or traffic-calmed residential roads. May not bike at all if bicycle facilities do not meet needs for perceived comfort.	Generally prefer more separated facilities, but are comfortable riding in bicycle lanes or on paved shoulders if need be.	Comfortable riding with traffic, will use roads without bike lanes.
Percent of General Public	31-37%	51-56%	5-9%	4-7%

2020 Active Transportation Plan- Safe Speeds

A PEDESTRIAN HIT BY A
VEHICLE TRAVELING AT

25 MPH



HAS AN **89%** CHANCE OF
SURVIVAL

A PEDESTRIAN HIT BY A
VEHICLE TRAVELING AT

35 MPH



HAS A **68%** CHANCE OF
SURVIVAL

A PEDESTRIAN HIT BY A
VEHICLE TRAVELING AT

45 MPH



HAS A **35%** CHANCE OF
SURVIVAL

Tefft, B. C. Impact speed and a pedestrian's risk of severe injury or death. Accident Analysis & Prevention 50 (2013) 871-878.

Reducing vehicle speeds by as little as ten miles per hour has a significant impact on the risk of fatality for vulnerable road users like bicyclists and pedestrians.

Alternative Fuels and Infrastructure

Solano Electrical Vehicle (EV) Transition Program

By supporting cleaner transportation options, such as active transportation in combination with cleaner vehicles and fuels can improve air quality that all residents across Solano County can benefit from.

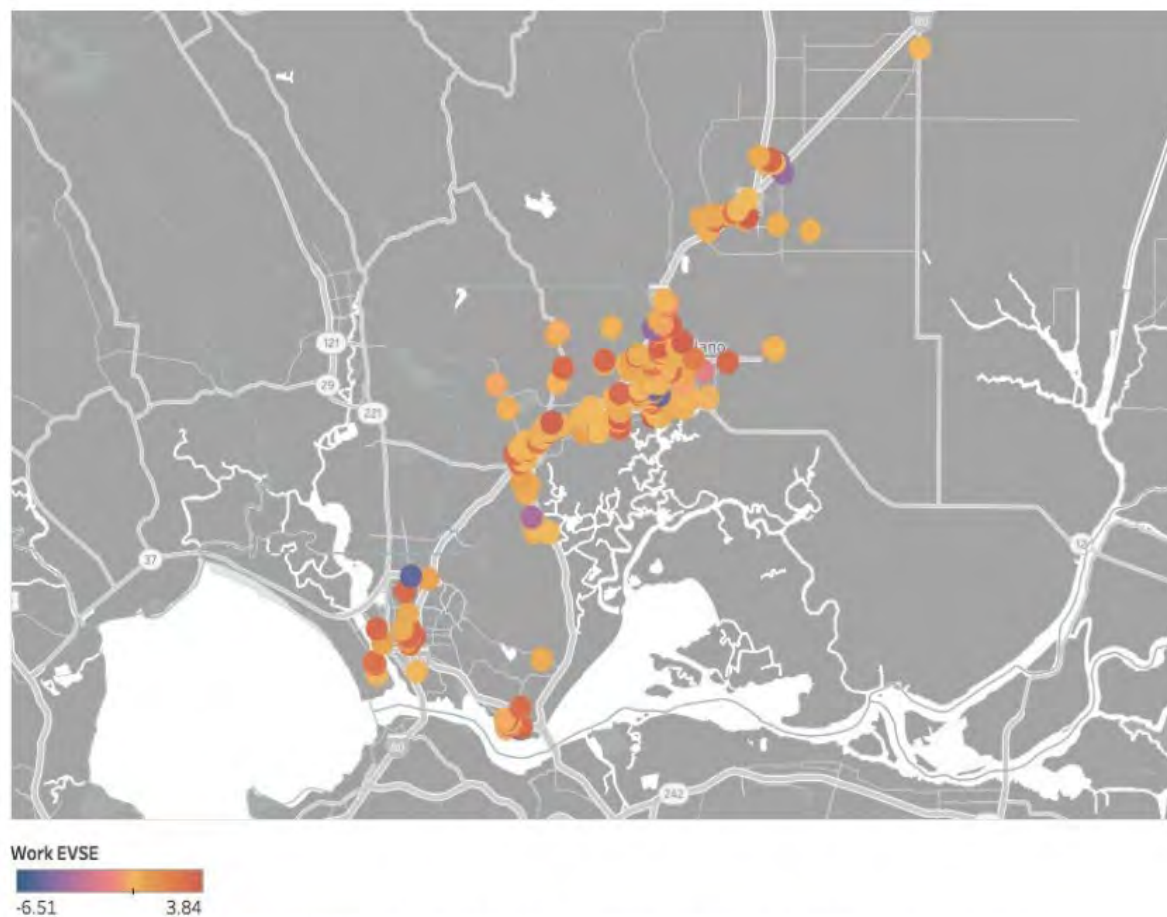
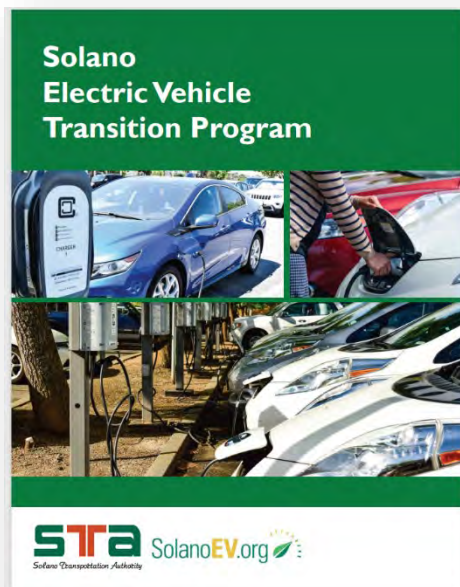
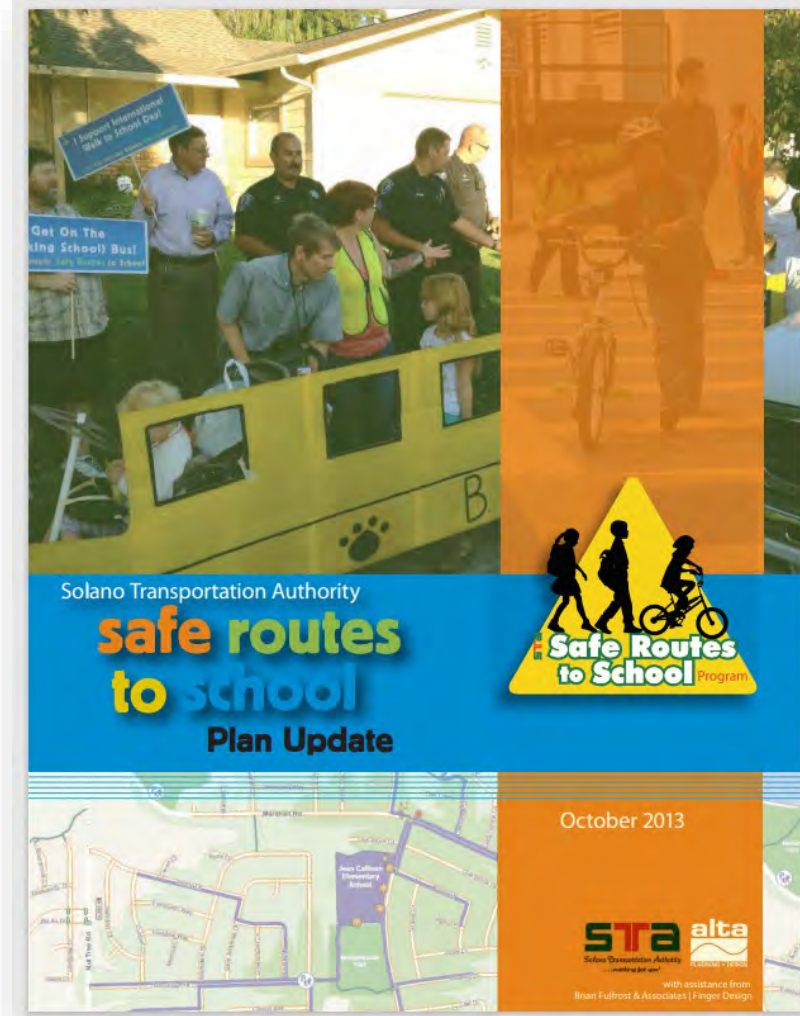


Figure 92. Estimated distribution of impact that EVSE installations may have on EV adoption by Solano commuters

Safe Routes to School Program and Plan

The Safe Routes to School (SR2S) Plan guides the Safe Routes to School (SR2S) Program. The SR2S Program is a multifaceted effort to increase the number of students who walk, bike, rideshare, or take transit to and from school.

The SR2S Program uses a comprehensive approach, the program includes the 6 “E’s” which are education, encouragement, enforcement, engineering, engagement, and evaluation.



Questions?

Solano Safe Routes to School Program



Amy Antunano
Assistant Program Manager- SR2S



What is Safe Routes to School?

Since 2008 Safe Routes to School, a program of the STA, has encouraged students to safely get to school by working with schools, police, public health staff, city traffic engineers and other community members to improve traffic safety and the health and well-being of youth in Solano County

The SR2S Program:

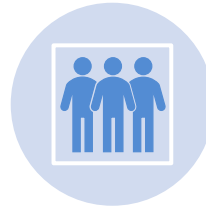
- Increases the number of students walking and biking to school safely
- Reduce traffic congestion and improve air quality around schools
- Increase daily physical activity levels and reduce obesity and other health risks



SR2S Program Challenges



COVID-19
Pandemic



Staff Turnover



School/Community
– Buy-in



Car-Centric Society



STA BOARD OF DIRECTORS – 7 SOLANO COUNTY MAYORS



SR2S Program offerings based on 6 E's

1. Education

Helmet Fitting, Bike Mobile, and Safety Assembly



2. Encouragement

Int'l Walk to School Day, Walk or Wheel (WOW) Programs, Bike to School Day

3. Enforcement

Enforcement Grants with Local Police Departments



4. Engagement

Outreach in the community

5. Evaluation

Hand Tally's and Walk Audits



6. Engineering

SR2S Micro Grant Program



What Can We Offer Your School?

Bike Mobile

- We contract with The Bay Area Bike Mobile to provide students with hands-on bike repair at your school.
- The Bike Mobile staff shows students how to perform easy maintenance on their bikes and fixes flat tires, adjusts bike seats and replaces worn brakes

Helmet Fitting

- Bike safety helmets are provided to students with an economic need.
- Groups of 4-6 students are fitted with new helmets. Students are taught the importance of wearing a helmet and other bike safety information. .



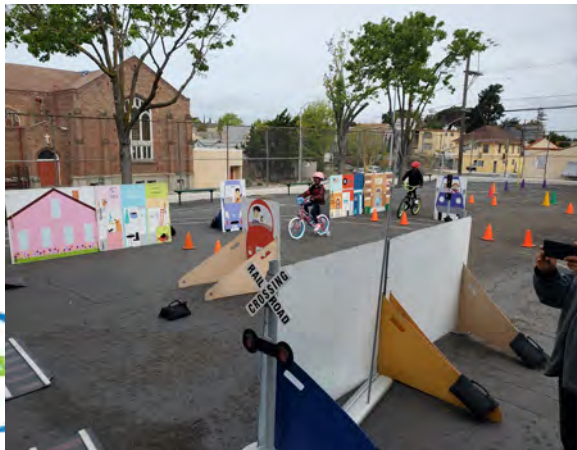
Walking School Bus (WOW Days)

- A Walking School Bus is an organized group of students who walk to and from school under the supervision of a trained adult volunteer
- A WSB can range from informal groups of families walking to school with an adult volunteer, to highly structured organizations with specified schedules and routes.
- It can be everyday or one day a week, you make it work for you!



Bike Rodeo's

- Educational event to teach youth how to be safer pedestrians, bicyclists, and scooter riders.
- Students walk, ride, and roll through a mock city with intersections, crosswalks, bike lanes, traffic signs & signals, & railroad tracks.



Solano SR2S Micro Grant Program

Overview

The SR2S Micro-Grant Program's goal is to support small-scale infrastructure projects or supplies that promote safe, active transportation to and from school, address safety around schools and/or encourage an increase in walking and biking to school.

Who is Eligible to Apply?

Solano County schools, school districts, cities and/or CBO's or nonprofit organizations

Types of Eligible Projects

Projects (could include but not limited to): Installing Bike Racks, Safety-related lights, signals and/or signage; restriping, creating green bike lane

Capital Purchases: Safety equipment such as helmets, vests, reflectors, stop paddles, education materials, etc.



Examples of Completed SR2S Micro Grant Projects



Joe Henderson Elementary, Benicia
Rapid Rectangular Flashing Beacon (RRFB)



Vaca Pena Middle School, Vacaville
Scooter/Skateboard Racks and Bicycle Air Pumps



Active Schools

Benicia:

- Joe Henderson Elementary
- Mary Farmar Elementary
- Matthew Turner Elementary
- Robert Semple Elementary
- St. Dominic School

Fairfield-Suisun:

- Cordelia Hills Elementary
- Dan O. Root Health & Wellness Academy
- K.I. Jones Elementary
- Nelda Mundy Elementary
- Suisun Elementary
- Fairfield High School
- Green Valley Middle School
- Crystal Middle School

Dixon:

- Anderson Elementary
- Dixon Montessori Charter
- Gretchen Higgins Elementary
- John Knight Middle School



Vacaville:

- Browns Valley Elementary
- Eugene Padan Elementary
- Fairmont Charter Elementary
- Hemlock Elementary
- Jean Callison Elementary
- Orchard Elementary

Vallejo:

- Cooper Elementary
- Dan Mini Elementary
- Lincoln Elementary
- Mare Island Health & Fitness Academy
- Pennycook Elementary
- Steffan Manor Elementary
- Highland Elementary School

Travis:

- Foxboro Elementary
- Cambridge Elementary
- Center Elementary

Rio Vista:

- DH White Elementary

2023/24 Strategic Goals

SR2S 2023 Plan Update

- Meeting with Community Task Forces
- Meeting with School Districts to update priorities

Program Implementation

- Expanding School Engagement
- Engaging key school/community stakeholders

Evaluation

- Using data to identify safety/perceived safety concerns around schools countywide
- Program elements: What works/What hasn't been working?





707-399-3222

www.solanosr2s.ca.gov



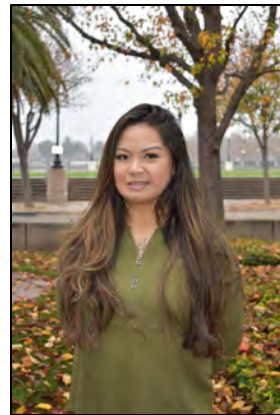
SolanoSR2S



Amy Antunano

Aantunano@sta.ca.gov

(707) 399-3210



Janelle Gregorio

JGregorio@sta.ca.gov



Suzanne Antone

santone@sta.ca.gov



Jennifer Hanley

Jhanley@sta.ca.gov

Active Transportation Trivia

What percentage of Solano County residents use walking/biking as a primary mode of transportation?



7%



10%



12%

Active Transportation Trivia

What percentage of Solano County residents use walking/biking as a primary mode of transportation?



7%



10%




12%





Active Transportation Trivia

What percentage of Solano County residents use walking/biking as a primary mode to get to work?



 4%

 5%

 6%

Active Transportation Trivia

What percentage of Solano County residents use walking/biking as a primary mode to get to work?



4%



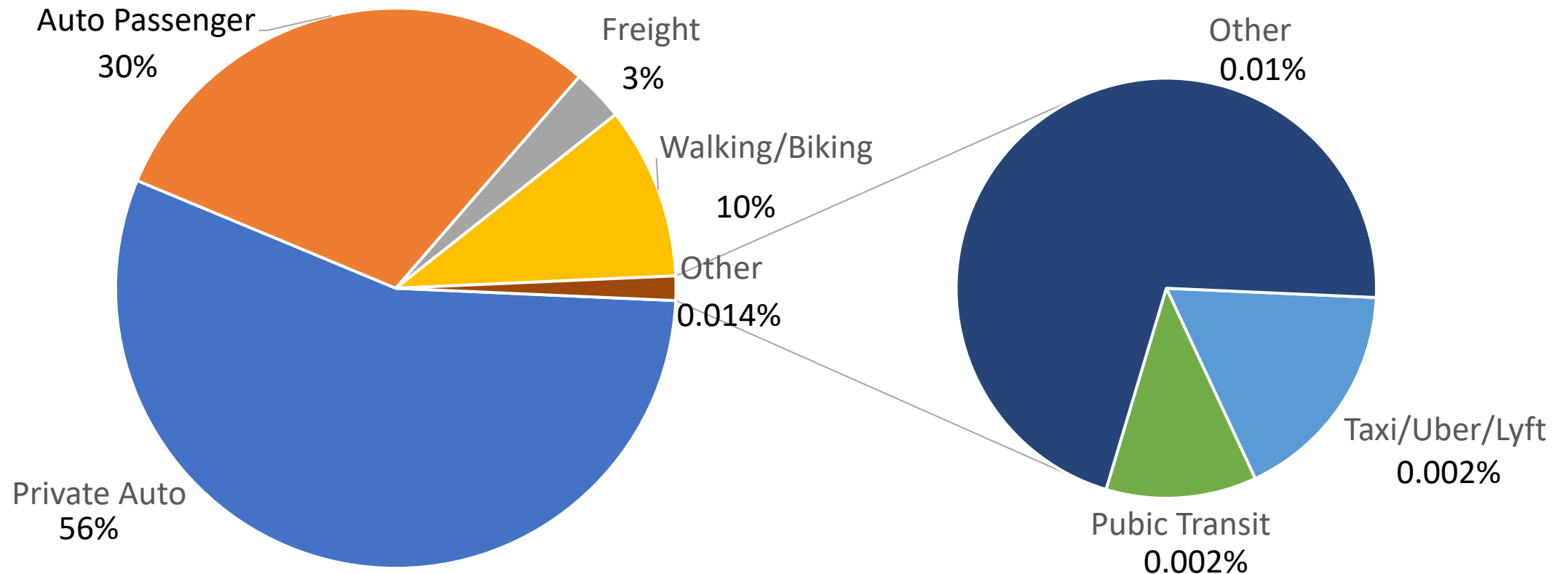
5%



6%



Primary Mode of Transportation for Solano County Residents during an Average Day in Fall 2022



Agenda Item 5.D

Active Transportation and Land Use

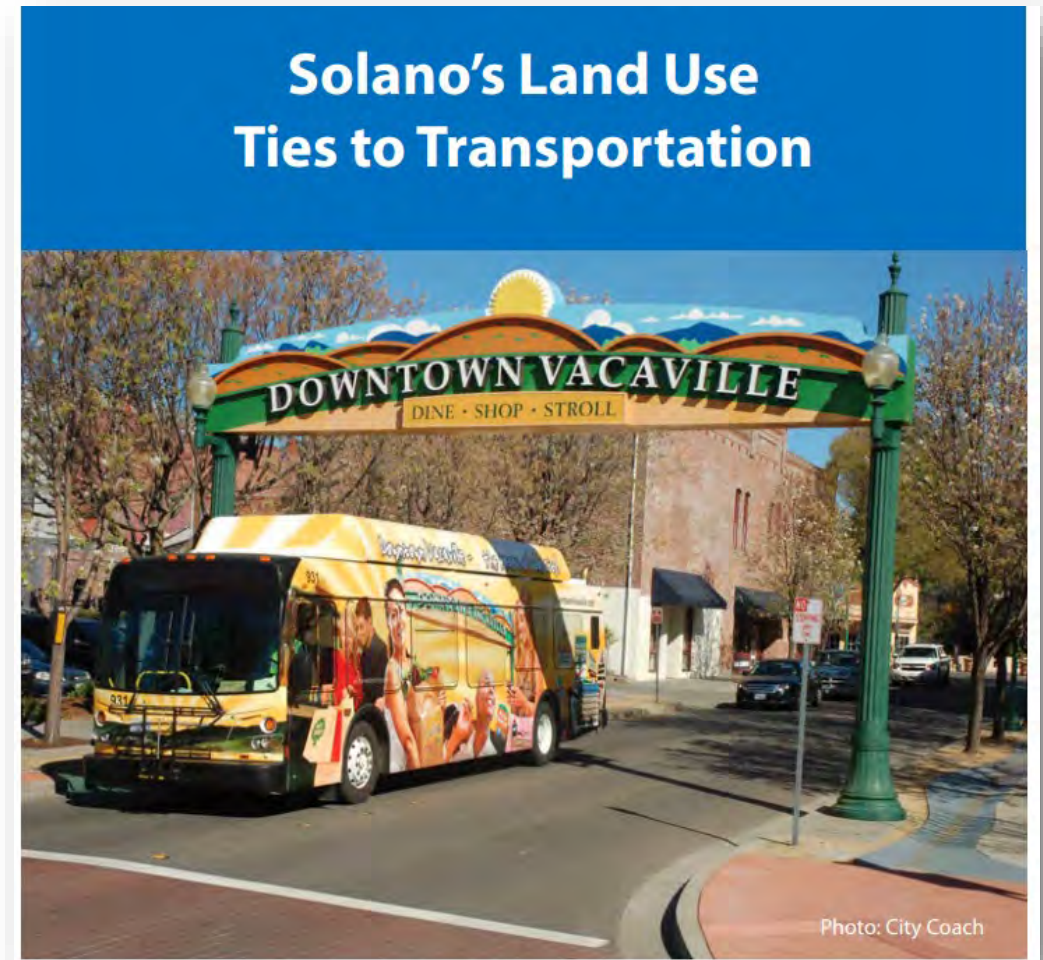
Robert Guerrero, Director of Planning

Active Transportation and Land Use

The Land Use Chapter provides information on the land use plans, policies and programs that will support the infrastructure and transportation investments in the Comprehensive Transportation Plan (CTP).

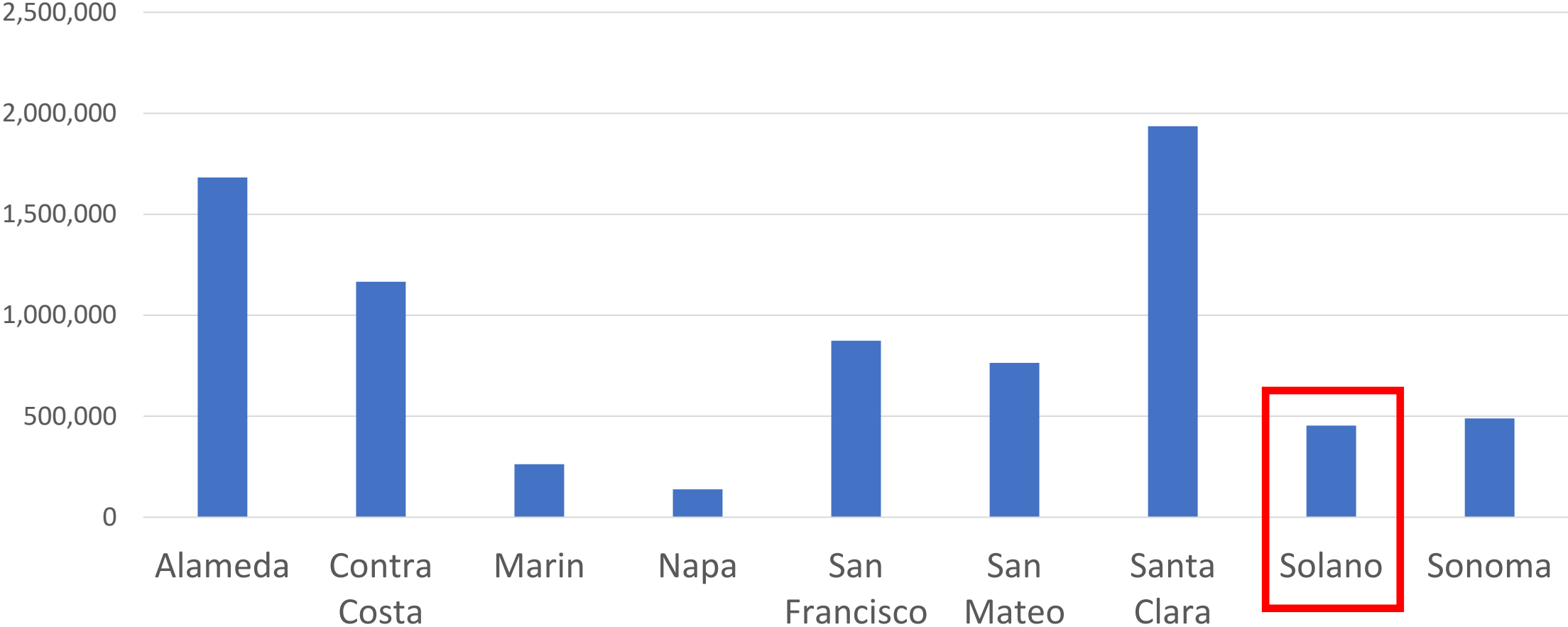
The chapter discusses housing and job production within Solano County and as well as summarizes the history and investments within the following land use designations:

- Priority Development Areas (PDA)
- Priority Conservation Areas (PCA)
- Priority Production Areas (PPA)

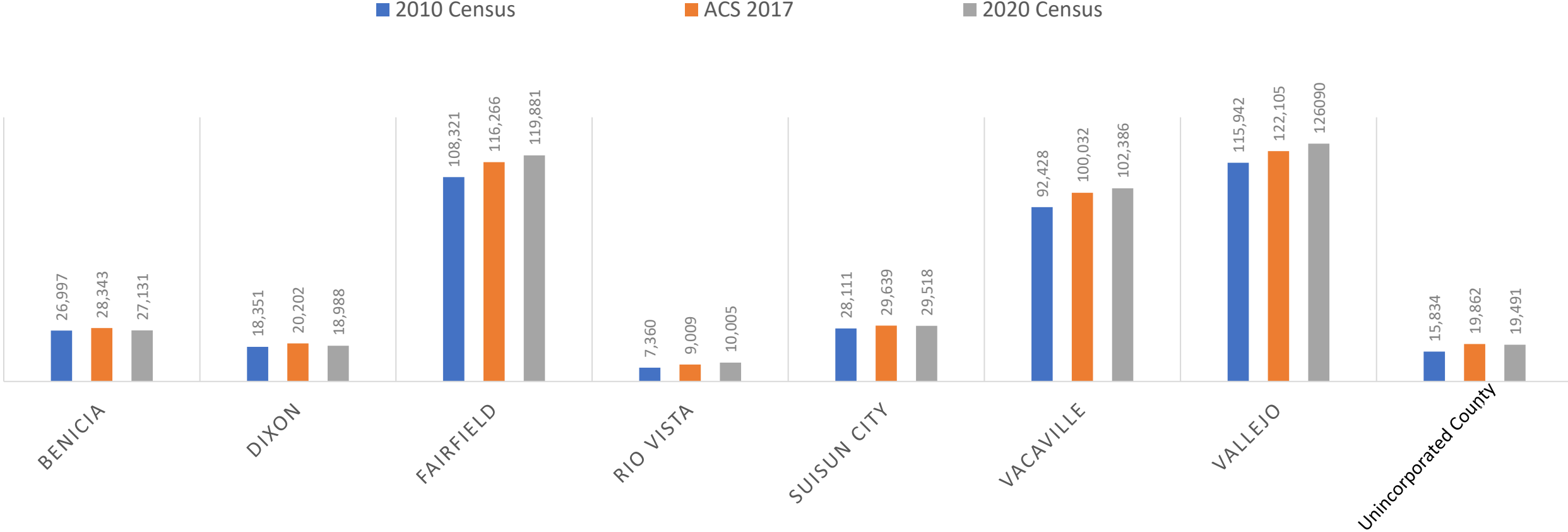


Active Transportation and Land Use- Population by County

Population Estimate for the Nine Bay Area County (July 2020 US Census)



Active Transportation and Land Use- Population by each City and unincorporated County



STA Designated as Solano County Collaborative on Housing

- Designation made available Regional Early Action Planning (REAP) grant resources for the STA and its member agencies to use for Regional Housing Needs Allocation (RHNA) Process and updating their individual Housing Element update.
- Each City and the County of Solano are anticipated to have their Housing Elements approved by the State Housing and Community Development (HCD) in 2023.
- The STA and its member agencies are now starting work to develop a Housing Element Implementation Plan which would provide tools and resources for attracting housing development in Solano County.



Solano County 2021 PDA Designations


Priority Development Areas

1. Mare Island PDA
2. Central Corridor West PDA
3. Sonoma Boulevard PDA
4. Central Corridor East PDA
5. Vallejo Waterfront & Downtown PDA
6. Solano 360 PDA
7. Carquinez Heights PDA
8. Downtown Benicia PDA
9. East 5th Street PDA

Priority Development Areas

10. Heart of Fairfield PDA
11. Fairfield Gateway PDA
12. Suisun City Downtown & Waterfront PDA
13. North Texas Street Core PDA
14. Fairfield-Vacaville Train Station PDA
15. Downtown Vacaville PDA
16. Allison Area PDA



 Current PDAs

Solano County 2021 PPA Designations

Priority Production Areas

1. Mare Island PPA
2. South Vallejo PPA
3. Northern Gateway Benicia's Industrial Park
4. Solano-Fairfield Train Station Employment Center
5. Fairfield PPA
6. Suisun City Gentry (Westside)

Priority Production Areas

7. Suisun City East Side PPA
8. Vacaville-Golden Hills Business Park PPA
9. Interchange Business Park PPA
10. Airport Business Area Policy Plan PPA
11. Northeast Quadrant
12. Rio Vista PPA



Solano County 2021 PCA Designations

Priority Conservation Areas

1. Mare Island Open Space PCA
2. Napa Sonoma Marshes Wildlife Area PCA
3. White Slough Wetlands Area PCA
4. Tri City & County Cooperative Planning Area PCA
5. Western Hills PCA
6. Suisun Valley PCA
7. Blue Ridge Hills PCA
8. Vacaville-Fairfield-Solano Greenbelt PCA
9. Dixon Agricultural Service Area PCA
10. Cache Slough PCA



 Current PCAs

Questions?

Committee Member Round Table

Future Topics

Upcoming October 11, 2023 ATC Meeting:

- Introduction of Federal/State/Local Funding Sources
- Presentations of Active Transportation Priorities from Each of the Seven Cities and unincorporated County
- STA staff will be in communication with member agencies to present on their jurisdiction's active transportation project priorities
- Committee members are encouraged to engage with their respective city staff to understand their community's project priorities