



# Rehabilitation / Complete Street Project (04-2Q520)

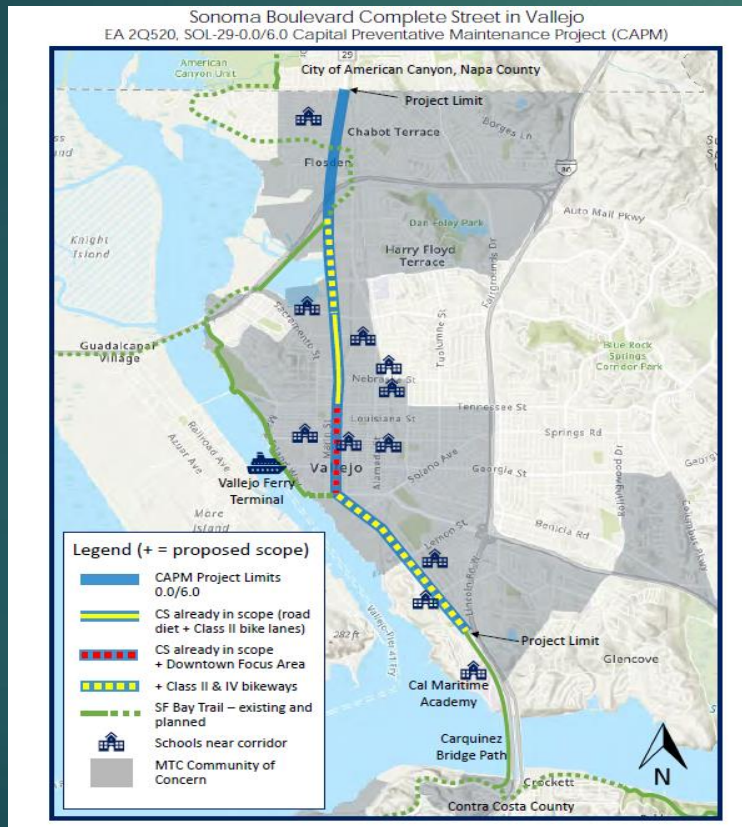
PRESENTED BY CALTRANS

MAY 10, 2023

# 2Q520 - PROPOSED PROJECT

PROJECT LOCATION (SR 29 - from I-80/SR 29 separation to Napa County Line)

## SCOPE OF WORK



### Rehabilitation of Pavement

- ▶ Cold Planing (0.25')
- ▶ Overlay (HMA 0.1' and RHMA 0.15')
- ▶ Pavement/ crosswalk striping

### Complete Street Elements

- ▶ Class II/ IV bike lanes
- ▶ Lane Reduction
- ▶ Modify traffic signals
- ▶ Upgrade Curb ramps
- ▶ Curb extension Bulb outs/ Drainage modification
- ▶ Landscaping/ Irrigation/ Erosion Control
- ▶ Street Furnishings

# 2Q520 - Facts

- ▶ Project Initiation Document (PID) was approved in June of 2019 to rehab SR 29 from SR 29/ I-80 separation to Sol/Napa county line (PM 0.0-6.0) and added to 2020 SHOPP for a Con Capital of **\$24.058** Million.
- ▶ Scope included Capital Preventive Maintenance (CAPM) along with some Complete Streets elements including curb ramps, and recommended further studies to incorporate additional improvements within the City downtown area.
- ▶ In collaboration with STA and City of Vallejo through Complete Street Reservation Proposal, Caltrans approved a Supplemental PID in May of 2021 for additional complete elements. Con Capital in SHOPP funds was increased to **\$26.759** Million and **\$721,000** funds are anticipated from STA/City of Vallejo for landscape/Irrigation/Controllers/benches.
- ▶ Added scope included Class II/IV bike ways (Sequoia Ave to Curtola Pkwy and Redwood St to Lewis Brown Rd), 57 Ped-scale LED light fixtures/ 36 Curb Extension-bulb outs/widen sidewalk (Pennsylvania St to Alabama St), Conflict zone green paint, lane reduction supported by feasibility studies, landscape/Irrigation and street furnishings.

# 2Q520 - Facts

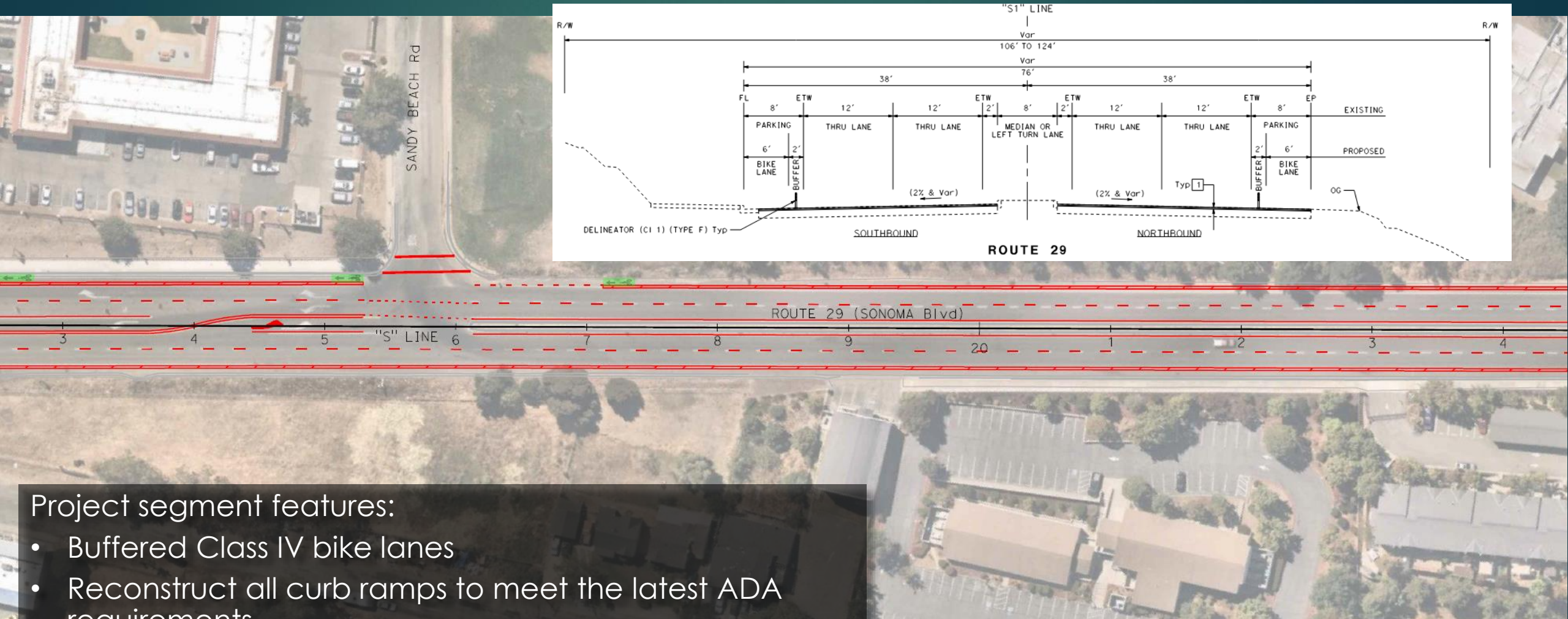
- ▶ During Project Approval & Environmental Document (PA&ED) phase, Caltrans conducted traffic studies and preliminary Engg evaluation.
- ▶ Project is divided into 3 distinct segments:
  - ▶ South Segment (From Maritime Academy Dr to Curtola Parkway)
  - ▶ Middle Segment (From Curtola Parkway to Mississippi St)
  - ▶ North Segment (From Mississippi St to County line just north of Mini Dr)
- ▶ Project is approved on 5/9/2023 (T)
- ▶ TOAR is under approval process



# SR-29 South Segment

## Maritime Academy Dr to Curtola Pkwy

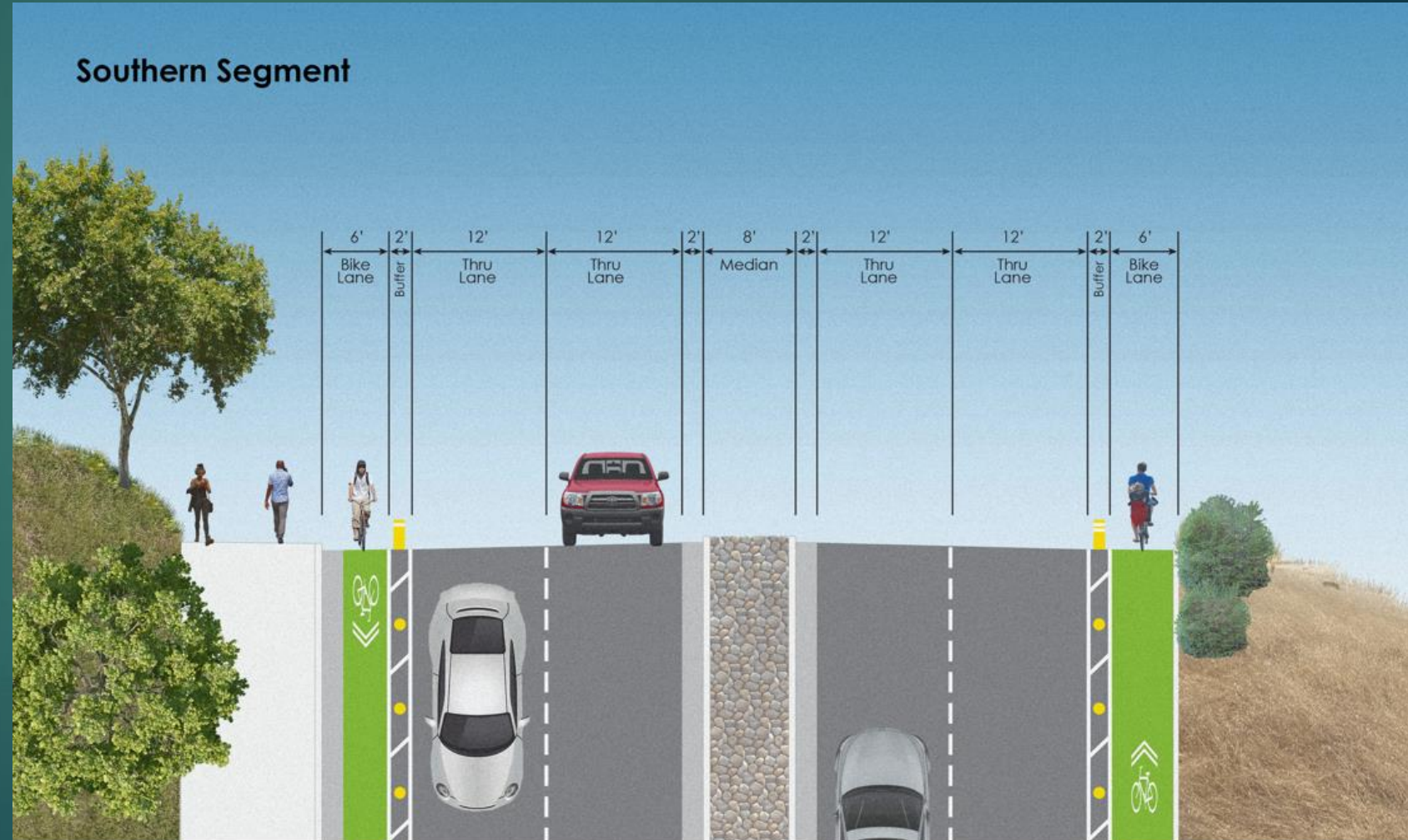
5



- Project segment features:
- Buffered Class IV bike lanes
  - Reconstruct all curb ramps to meet the latest ADA requirements
  - Updated crosswalk striping
  - Pavement rehabilitation

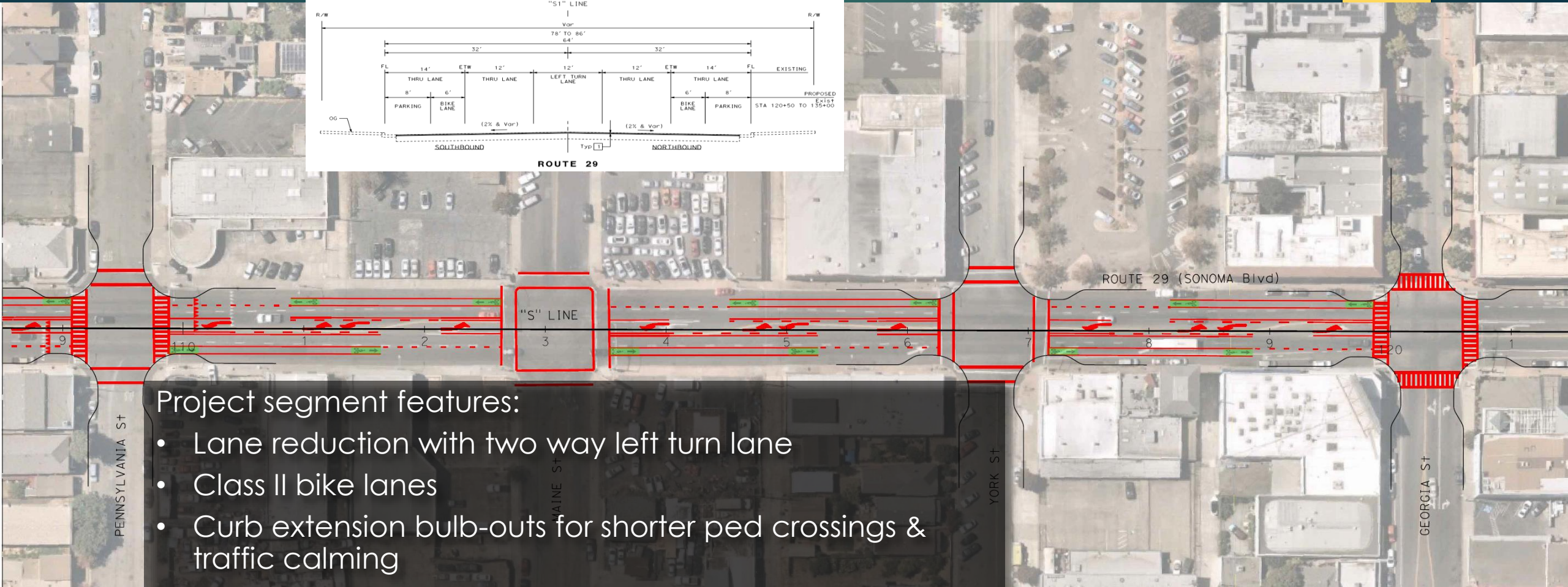
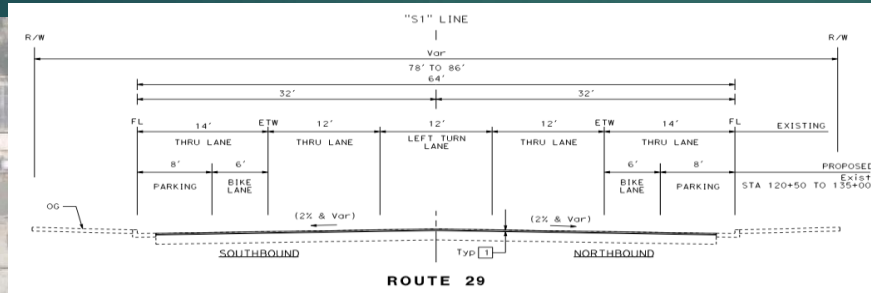
# SR-29 South Segment - Maritime Academy Dr to Curtola Pkwy

- ▶ Project segment features:
- ▶ Buffered Class IV bike lanes
- ▶ Reconstruct all curb ramps to meet the latest ADA requirements
- ▶ Updated crosswalk striping
- ▶ Pavement rehabilitation





# SR-29 Middle Segment Curtola Pkwy to Mississippi St



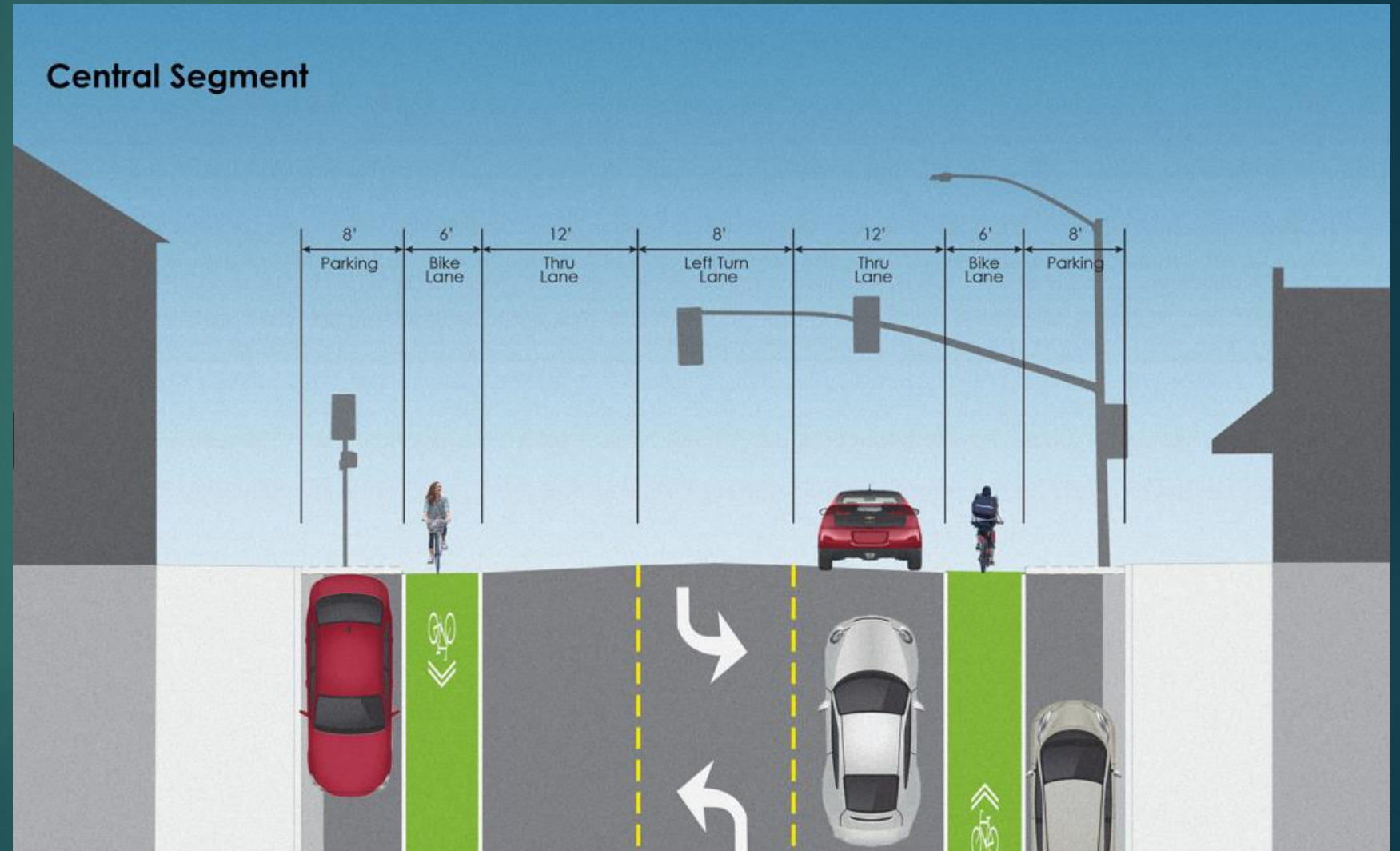
## Project segment features:

- Lane reduction with two way left turn lane
- Class II bike lanes
- Curb extension bulb-outs for shorter ped crossings & traffic calming
- Reconstruct all curb ramps to meet the latest ADA requirements
- Updated crosswalk striping/ Ped Scale LED features
- Pavement rehabilitation



# SR-29 Middle Segment - Curtola Pkwy to Mississippi St

- ▶ Project segment features:
  - ▶ Lane reduction with two way left turn lane
  - ▶ Class II bike lanes
  - ▶ Curb extension bulb-outs for shorter ped crossings & traffic calming
  - ▶ Reconstruct all curb ramps to meet the latest ADA requirements
  - ▶ Updated crosswalk striping/ Ped Scale LED features
  - ▶ Pavement rehabilitation





# SR-29 Middle Segment - Curtola Pkwy to Mississippi St

- ▶ Project segment features:
- ▶ Lane reduction with two way left turn lane
- ▶ Class II bike lanes
- ▶ Curb extension bulb-outs for shorter ped crossings & traffic calming
- ▶ Reconstruct all curb ramps to meet the latest ADA requirements
- ▶ Updated crosswalk striping/ Ped Scale LED features
- ▶ Pavement rehabilitation



# SR-29 Middle Segment - Curtola Pkwy to Mississippi St

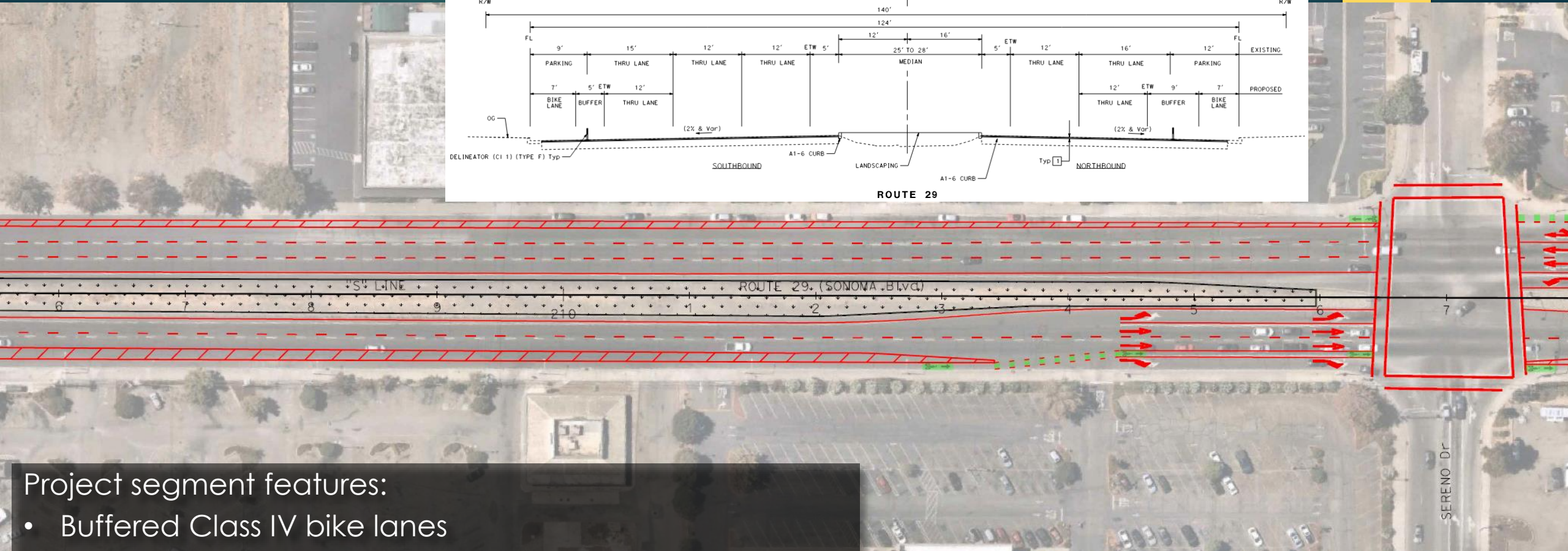
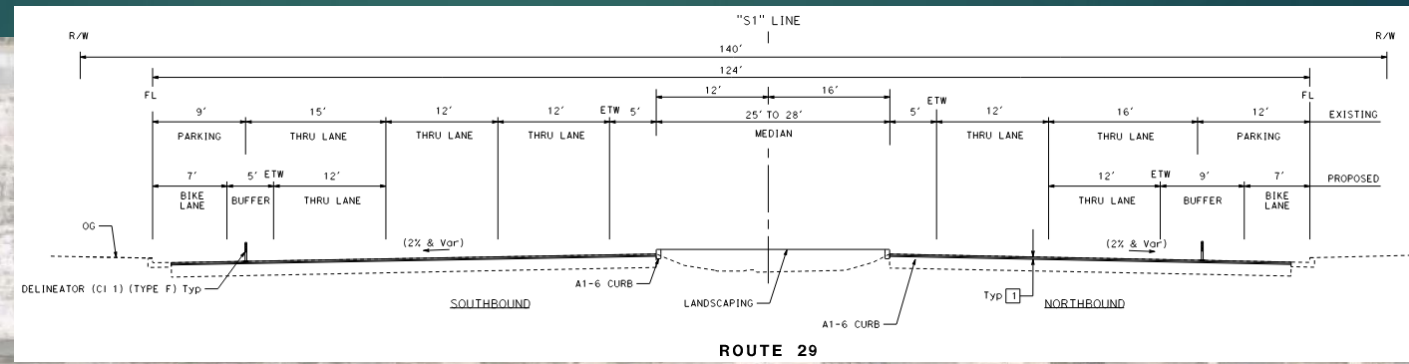




# SR-29 North Segment

## Mississippi St to County Line

11



### Project segment features:

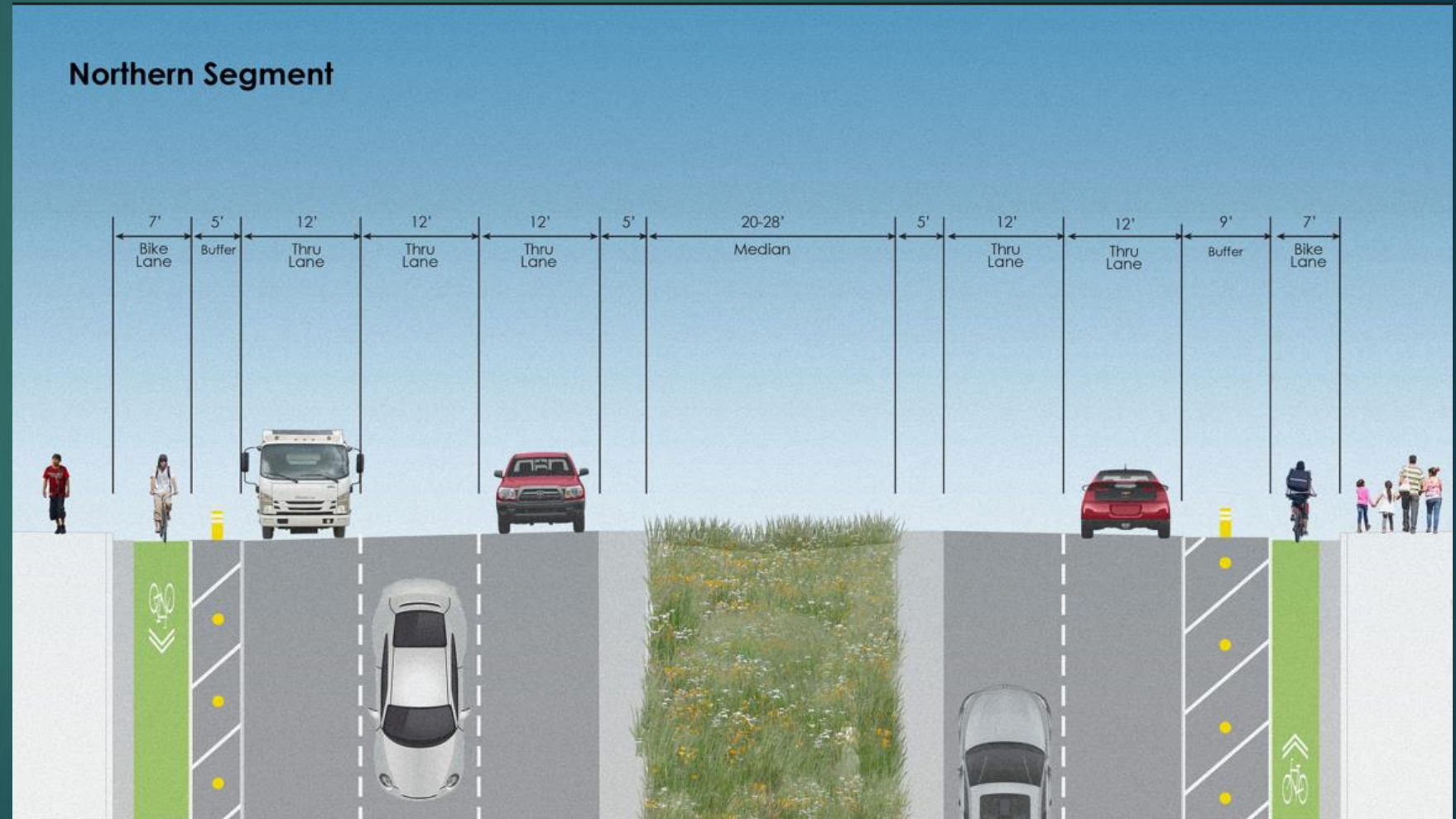
- Buffered Class IV bike lanes
- Reconstruct all curb ramps to meet the latest ADA requirements
- Updated crosswalk striping
- Pavement rehabilitation
- Landscaping/ Erosion Control

# SR-29 North Segment - Mississippi St to County Line

12

## ► Project segment features:

- Buffered Class IV bike lanes
- Reconstruct all curb ramps to meet the latest ADA requirements
- Updated crosswalk striping
- Pavement rehabilitation
- Landscaping/ Erosion Control





# City of Vallejo contribution



SOURCE: NACTO.ORG

- ▶ SR-29 from Pennsylvania St to Alabama St
  - ▶ Landscaping (street/ Median)
    - ▶ \$217,000 \*
  - ▶ Irrigation/Controllers : \$350,000\*
  - ▶ Street Furnishings (Benches/ Bike racks/trash cans): \$150,000\*
  - ▶ Total Estimate \$721,000



\* Subject to final design in PS&E Phase

# Funding, Construction Capital, and Schedule

14

## Funding/ Estimate

- ▶ SHOPP funds: \$26,759,000
- ▶ City of Vallejo's contr \$721,000
- ▶ Total avail funds: \$27,480,000
- ▶ **Engineer's Estimate**
- ▶ Con Capital (PAED): \$29,549,000
- ▶ Cost Overrun: \$2,060,000

## Schedule

- ▶ PAED- May 2023
- ▶ Ready to List- Dec 2024
- ▶ Begin Construction: June 2025
- ▶ Construction Complete: June 2027



# 2Q520 - Rehab/Complete Street Project

15



Sindhu Kurup

Caltrans, District 4

Regional Project Manager,  
(Solano County – D4)

(510) 715-7920

Leslie Gould

Solano Transportation Authority

Assistant Project Manager

(707) 399-3219