



# SEGMENT 1 – McClosky Rd. to Azevedo Rd. – Roadway Rehab.



## LEGEND

-  Roadway Resurfacing
-  Caltrans Right of Way

- Rehab Pavement Cracks and Potholes
- Upgrade Guardrails
- Replace Existing Pipe Culverts

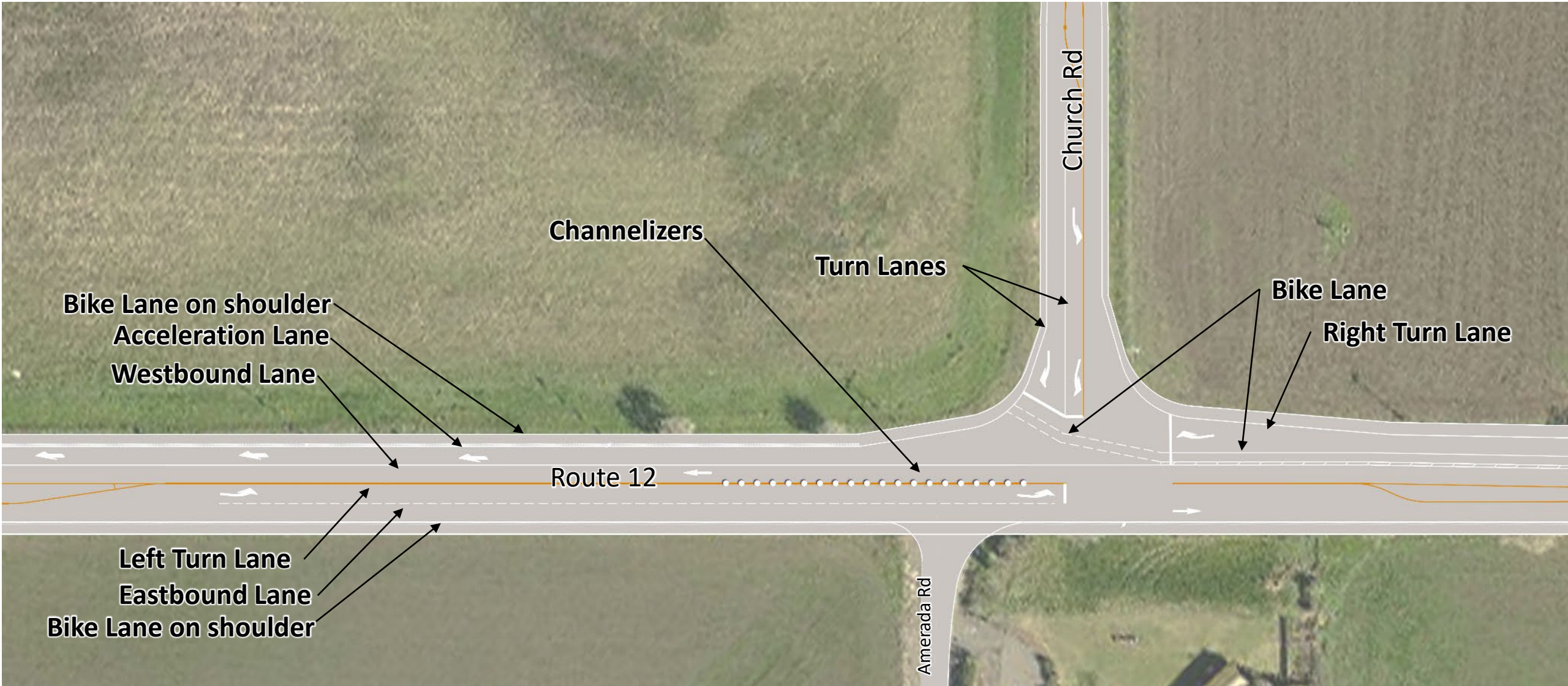
## SEGMENT 2 – Summerset Road to Drouin Drive – Safety Enhancements



- Rehab Pavement Cracks and Potholes
- Upgrade Non-Standard Guardrails
- Add Shoulder Backing to Extend Life of Pavement
- Replace Existing Pipe Culverts

- Widen Shoulders and Travel Lanes to Standard
- Create Bike Lanes within Widened Shoulders
- Improve Sight Distance (Vertical Curve Correction)
- **Church Rd. Intersection Improvements**

# Church Road Intersection Improvements



# SEGMENT 3 – Drouin Drive to Sacramento County line



- Rehab Pavement Cracks and Potholes
- Address Drainage Issues
- Complete Streets Improvements
  - Install Continuous ADA Accessible Sidewalks
  - Create New Pedestrian Crossing
  - Update Existing Crossings
  - Create Class 4 Protected Bike Lanes
  - Collaborate with City & County to Install Additional Streetscape Improvements

## LEGEND

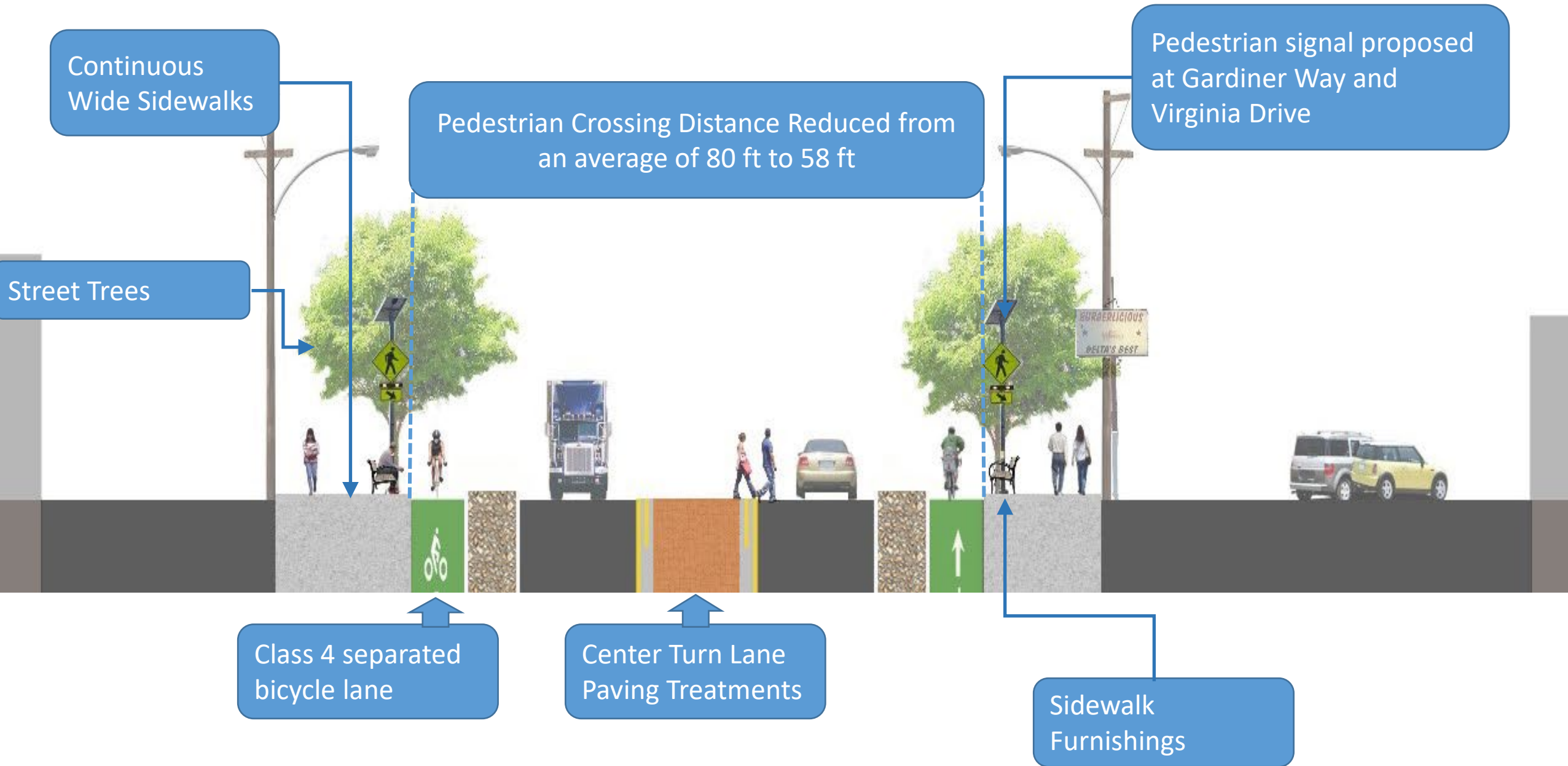
- Existing sidewalk to be replaced
- - - New sidewalk
- |||| | Pedestrian Crossing Icon | |||| New/improved pedestrian crossing

- Bus Stop, (location TBD)
- - - | Bike Lane Class 2
- | Bike Lane Class 4

# Additional Improvements – Providing Safer Crossings

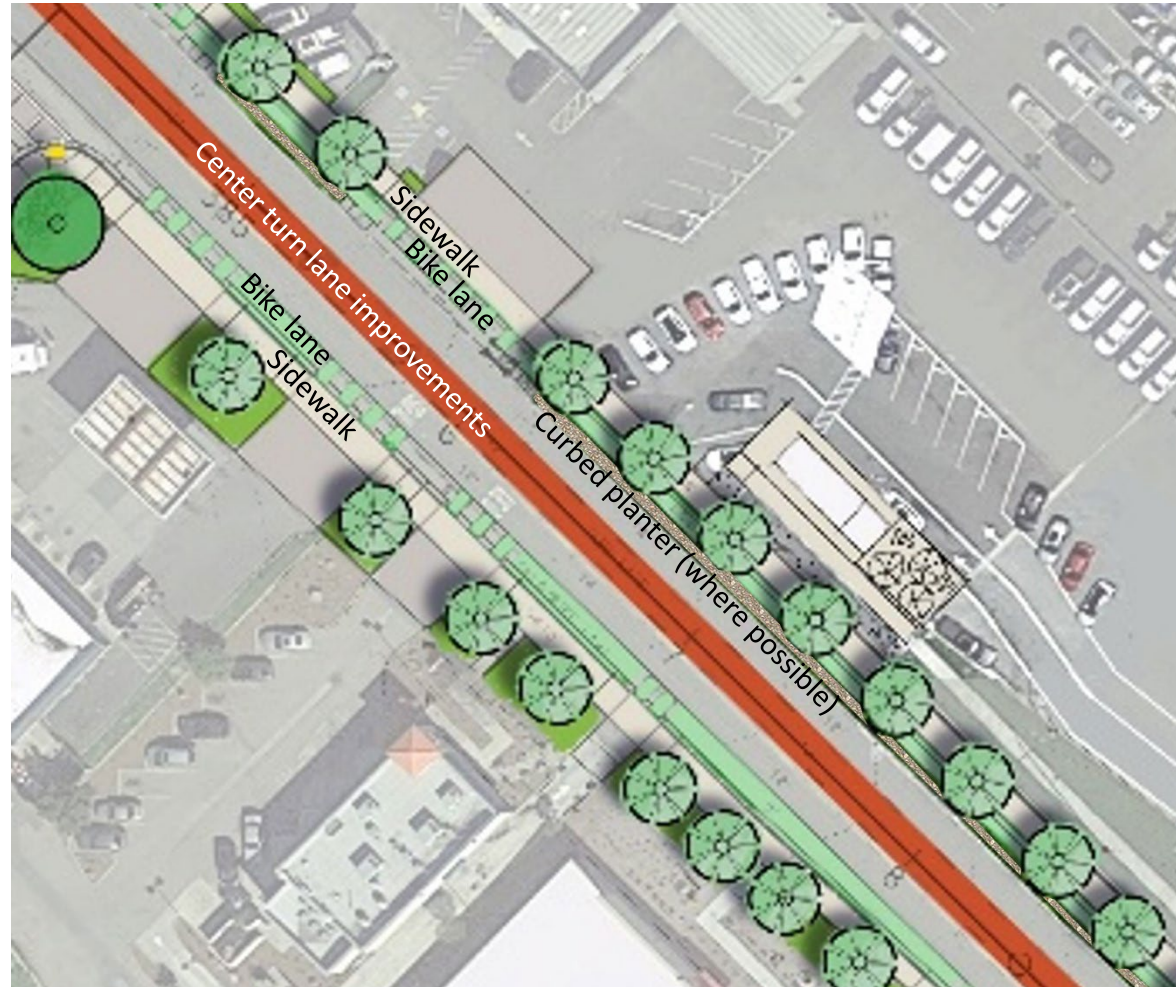


# SEGMENT 3 – Enhancements and Improvements



# SEGMENT 3 - Improvements + Funding

## Schematic Plan - Detail



Street trees

# SEGMENT 3 - Improvements + Funding

## Schematic Plan - Detail



Crossing with RRFB

Street trees



# Pedestrian Crossings

## Park Space – Hillside Terrace

