

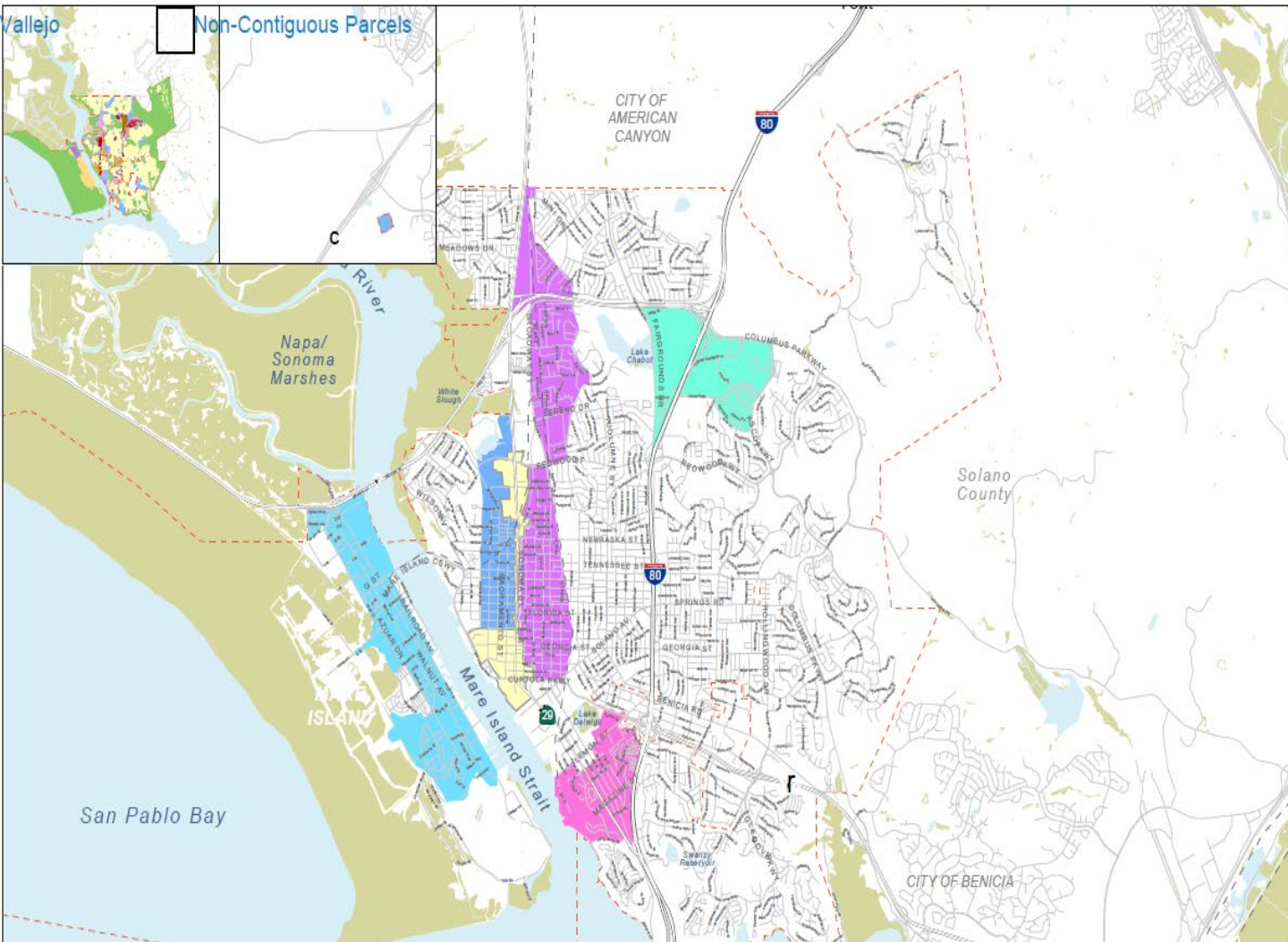
# City of Vallejo PDA Update STA Board of Directors

Mark Helmbrecht, Transportation Manager  
Christina Ratcliffe, AICP, Interim PDS Director

December 8, 2021



# Priority Development Areas



## CITY OF VALLEJO PDAs

### Existing PDAs

- Waterfront and Downtown
- Sonoma Boulevard

- Solano 360
- Mare Island
- Central Corridor West
- Central Corridor East
- Carquinez Heights

- Railroad
- Vallejo City Limit
- Wetland

# Mare Island PDA

- The City is actively working with Southern Land to redevelop and revitalize the Island.
- The City has been awarded two significant grants to help develop Mare Island.
  - EPA Brownfields Grant - \$600,000
  - EDA Infrastructure Study - \$1.2 million



# Solano 360 PDA

- Solano County and the City are coordinating on the County's amendment to the approved 2009 Specific Plan for the County Fairgrounds site. The County has targeted January 2022 for submittal of this amendment.
- It is anticipated that the amendment will include a transit center, fair grounds, entertainment, retail uses, restaurants, wineries, breweries, hotel, residential uses, and more



# Sonoma Boulevard and Waterfront/ Downtown PDAs

- June 2021 adopted new Zoning Ordinance that enacts the Sonoma Boulevard and Waterfront/Downtown Specific Plans (with same boundaries as PDAs).
- Specific Plans seek to vitalize and activate this important corridor and the Downtown and Waterfront areas, including the Transit hub and Ferry.



# 2019 Sonoma Blvd. Improvements

## Road Diet and Bike Lanes



**Georgia to Florida Road Diet  
Completed Fall 2019**



**Reduced Lanes &  
Added C-II Bike Lanes**

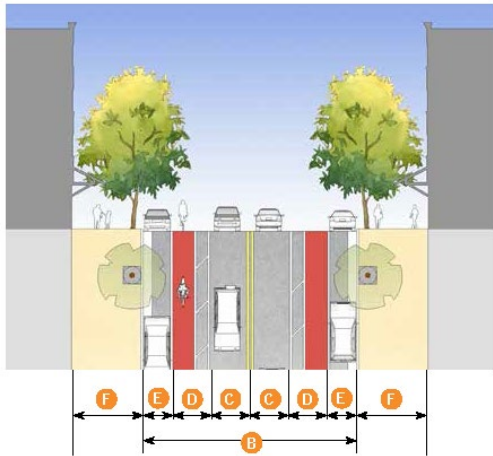


**Broad Community  
Acceptance**

# The Vision for SR-29 / Sonoma Blvd

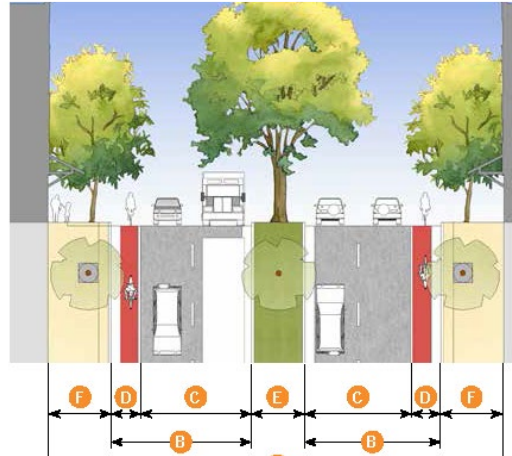
## The Sonoma Blvd Specific Plan

### 2 Lane Main Street



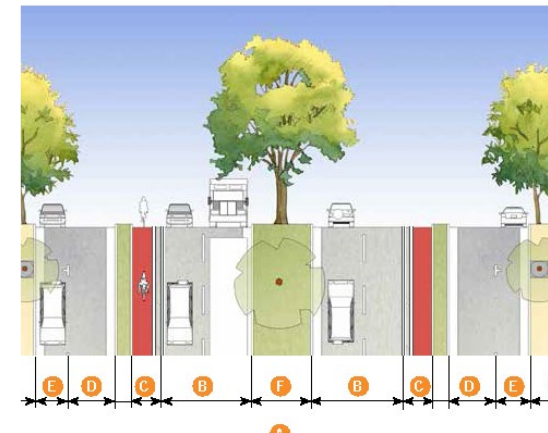
- Curtola to Nebraska
- 2 11' Travel lanes, 2 5' bike lanes with 3' buffer
- Street trees, expanded sidewalk, parking lane

### 4 Lane Avenue



- Nebraska to Couch, Below Curtola
- 4 11' travel lanes, 2 6' bike lanes
- Street Trees, Parking lane 13.5' sidewalk

### Multiway Blvd



- Couch to Redwood
- 4 11' travel lanes, 2 6' bike lanes with 2' buffer
- 2 11' access lanes
- Street Trees, Parking lane 12' sidewalk

# Complete Streets Summary



## Already in SHOPP scope:

- ADA curb ramps throughout
- Evaluate lane reconfiguration and restriping for bike lanes (Curtola to Redwood and South Vallejo)

## Complete Streets Reservation proposal (Pennsylvania to Alabama):

- Widen sidewalks
- Curb extensions
- Pedestrian-scale lighting

## City of Vallejo and STA contribution:

- Landscaping & irrigation
- Street trees
- Benches





# Waterfront/Downtown PDA projects



# Central Corridor West PDA

- Eden Supportive Housing Project on Sacramento Street broke ground just last week. Seventy-Four units of permanently affordable housing, plus a manager's unit.



# Contacts / Questions

Mark Helmbrecht, Transportation Manager

[Mark.Helmbrecht@CityofVallejo.net](mailto:Mark.Helmbrecht@CityofVallejo.net)

Christina Ratcliffe, AICP, Interim PDS Director

[Christina.Ratcliffe@cityofvallejo.net](mailto:Christina.Ratcliffe@cityofvallejo.net)

