

# I-80 Westbound Truck Scales

Pre-Proposal Meeting

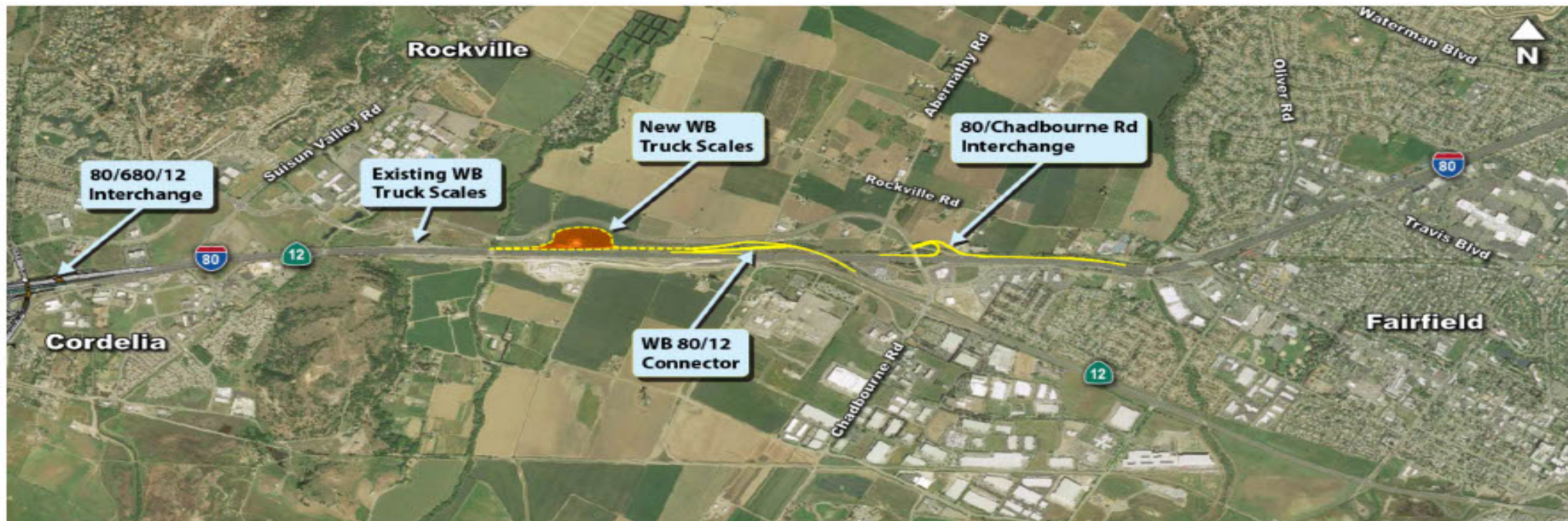
*April 30, 2021*

# Agenda

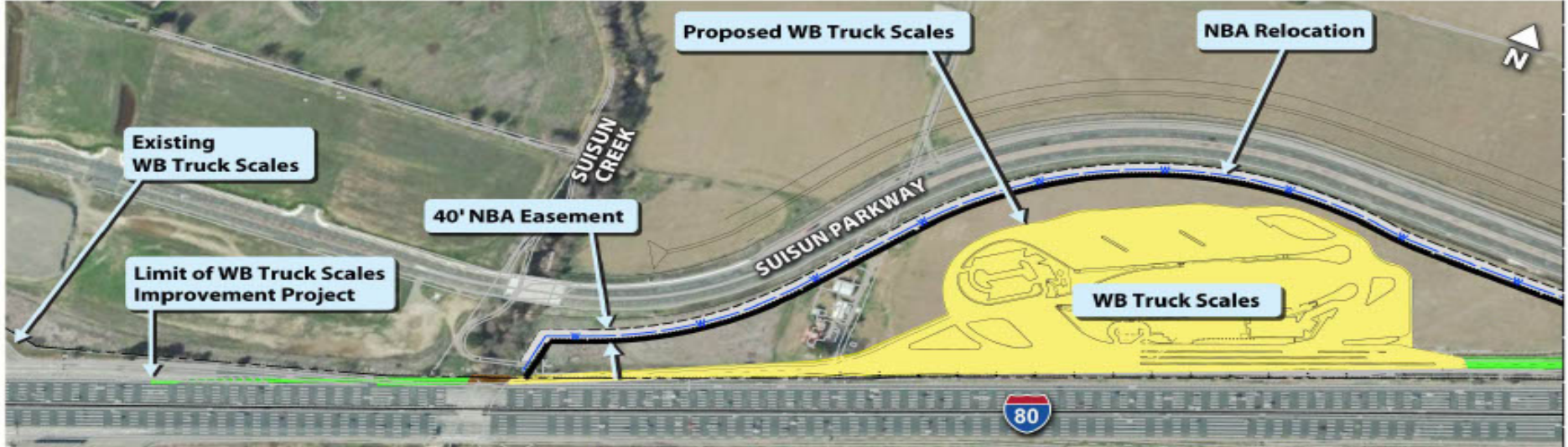
1. Introduction
2. Project Description
3. Project Challenges
4. Overall Approach
5. Technology Integration Component
6. CM/GC Project Delivery Method
7. Important Dates
8. Questions



## PROJECT AREA



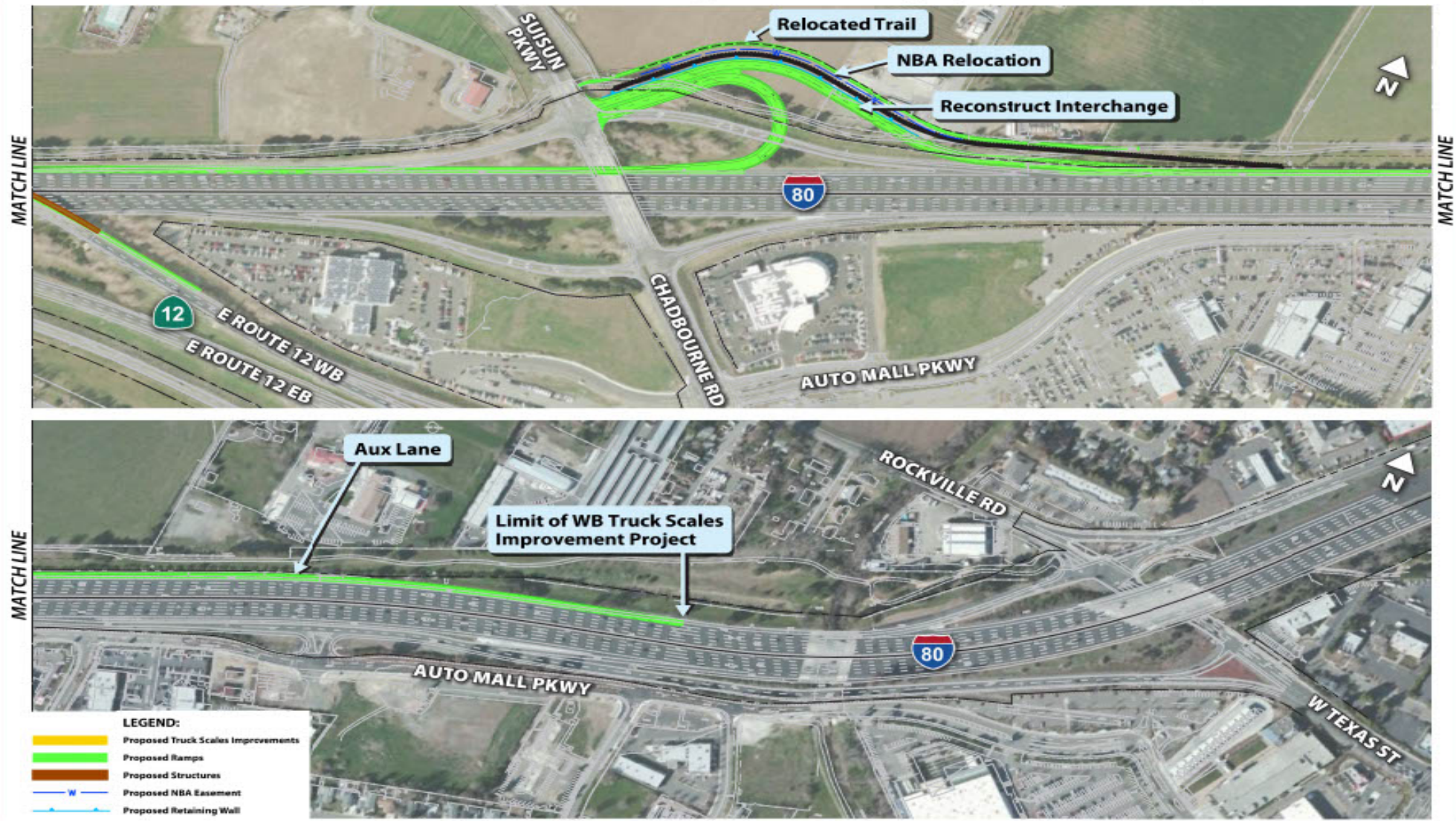








# Caltrans PS&E Responsibility (65%-100%)



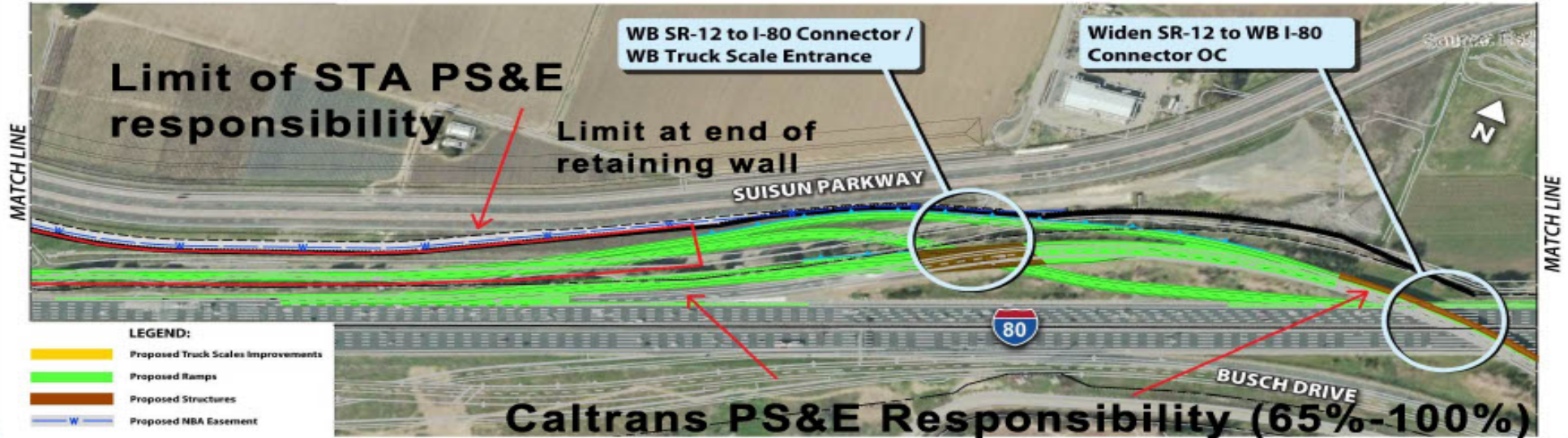
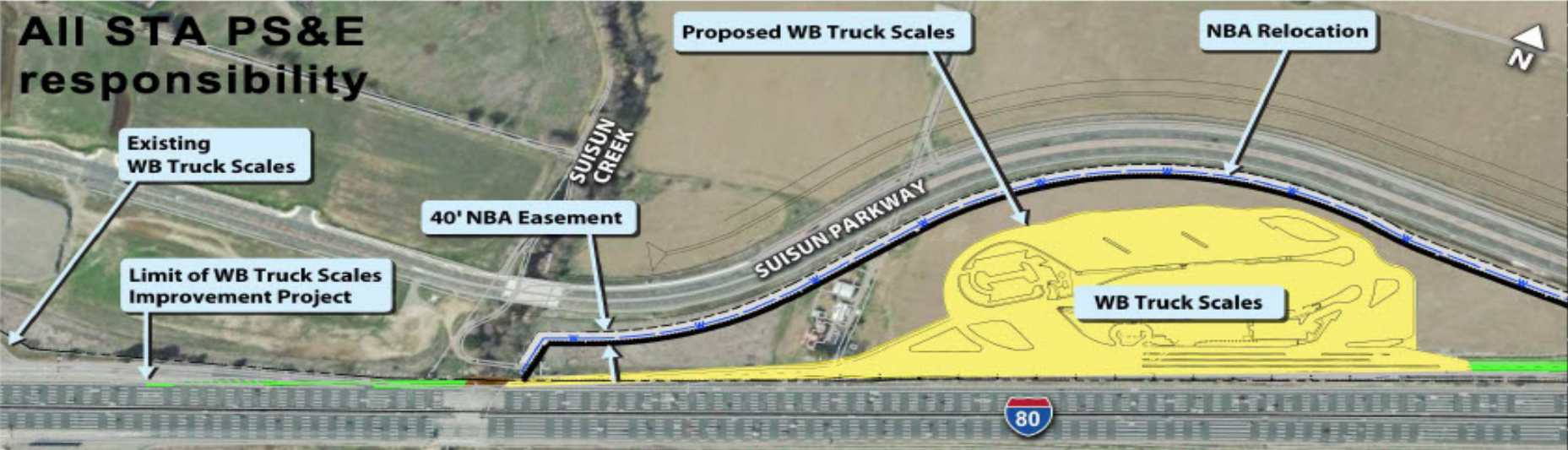
# Project Challenges

1. Perform Floodplain Assessment
2. Coordination w/ Department of Water Resources (DWR)
3. Seasonal Restrictions for Suisun Creek Bridge Widening
4. Coordinating w/ CHP
5. State Architect and Fire Marshall's Offices
6. Building Utilities

# Overall Approach

1. Blended Team w/ Caltrans
2. STA Consultant Team
  - Environmental Revalidation / Supplemental Project Report
  - 35% PS&E for Entire Project
  - 65%-Final Design for Portion of Project
  - CCVEF, including technology and site utilities





**Caltrans PS&E Responsibility (65%-100%)**





# Caltrans PS&E Responsibility (65%-100%)



# I-80 WESTBOUND CORDELIA COMMERCIAL VEHICLE ENFORCEMENT FACILITY PROJECT

## ATTACHMENT B, PS&E WORK RESPONSIBILITY – *PRELIMINARY TASKS*

AGENCY WITH PRIMARY LEAD  
AGENCY WITH SUPPORTING ROLE



PHASE / TASK	STA	Caltrans	REMARKS
<b>PRELIMINARY TASKS</b>			
NEPA Clearance and CEQA Update			
Supplemental Project Report			Caltrans to provide TMP, Ramp Metering Exception, R/W Data Sheets (including Utility component).
Geometric Approval Drawings			STA's consultant to prepare GAD for entire project
Advance Planning Studies			STA's consultant to prepare APS for all proposed structures
Design Standards Decision Document / Ramp Metering Exception Request			STA's team to take lead, Caltrans to provide documentation and support as needed
Flood Plain Analysis			
Coordination with HQ CVEF			STA team to lead, Caltrans to facilitate meetings
Storm Water Data Report			
Prelim Site Layout/Bldg Architecture			
Risk Register			STA's consultant to prepare/maintain for entire project
Cost Estimate			STA's consultant to prepare Project Report level estimate for entire project



# I-80 WESTBOUND CORDELIA COMMERCIAL VEHICLE ENFORCEMENT FACILITY PROJECT

## ATTACHMENT B, PS&E WORK RESPONSIBILITY – 35% PS&E PHASE

AGENCY WITH PRIMARY LEAD  
AGENCY WITH SUPPORTING ROLE



35% PS&E			
PM Activities			STA team to lead PM activities for 35% PS&E phase
CVEF (CT HQ TS ) coordination			
Aerial Mapping			Caltrans to prepare mapping. STA's Consultant to confirm mapping needs for STA work limits
Field Surveys			Caltrans to prepare mapping. STA's Consultant to confirm field survey needs for STA work limits
Prelim R/W Mapping			Caltrans to prepare R/W Base Maps, STA consultant to provide prelim R/W Requirement for complete project
Type Selection Report			STA consultant to prepare Type Selection Report for Suisun Creek Bridge widening, Caltrans to prepare for structures within their work limits
35% PS&E Package and Prelim Studies			STA's consultant to prepare 35% submittal package (including estimate) for entire project
CMGC Engagement			Caltrans to select ICE and Contractor
<b>Subtotal 35% PS&amp;E phase</b>			

I-80 WESTBOUND  
CORDELIA COMMERCIAL  
VEHICLE ENFORCEMENT  
FACILITY PROJECT  
ATTACHMENT B  
PS&E WORK RESPONSIBILITY  
65% PS&E PHASE

65% PS&E			
Meetings / PM Activities			Caltrans to lead Project beyond 35% submittal
GDMR			All borings to be performed by STA's consultant. Caltrans to prepare GDMR for Caltrans portion of work.
Foundation Report			All borings to be performed by STA's consultant. Caltrans to prepare Foundation Report for Caltrans-design walls and bridges
Structures Work			STA - Suisun Creek, CT - SR 12 connector widening, SR12/Truck Scale off ramp, SR-12 retaining walls (3)
Roadway Work			Caltrans to lead overall design effort, including preparing Title Sheet, Key Map, Typical Cross Sections etc, with information from STA's consultant team.
Flood Plain Assessment			
Drainage / Drainage Report			STA's consultant to prepare, with Caltrans providing information for their portion of the work limits
Signing and Pavement Delineation			STA's consultant to provide for STA's portion of work
Stage Construction / Traffic Handling			STA's consultant to provide for STA's portion of work
Electrical / Lighting			STA's consultant to provide for STA's portion of work
CVEF (CT HQ TS ) coordination			
Site Work / Architecture			
SSP's			Caltrans lead, STA to provide SSPs for building/site work, confirm SSPs for roadway/bridge work
NBA relocation			Assumed to be performed by DWR. STA's team to include capability to perform design if allowed.
CMGC			Design Meetings, Risk Workshops, Quantity and Cost Reconciliation meetings
Permits			STA's consultant to draft applications and obtain permits



I-80 WESTBOUND  
CORDELIA COMMERCIAL  
VEHICLE ENFORCEMENT  
FACILITY PROJECT  
ATTACHMENT B  
PS&E WORK RESPONSIBILITY  
65% PS&E PHASE  
100% PS&E PHASE  
ROW PHASE  
OTHER

<b>95% PS&amp;E</b>			
Roadway Work	Blue	Yellow	Similar responsibilities to 65% phase
Structures Work	Blue	Yellow	Similar responsibilities to 65% phase
CMGC	Blue	Yellow	Similar responsibilities to 65% phase
<b>95% PS&amp;E</b>			
Roadway Work	Blue	Yellow	Similar responsibilities to 65% phase
Structures Work	Blue	Yellow	Similar responsibilities to 65% phase
	Blue	Yellow	Similar responsibilities to 65% phase
<b>100% PS&amp;E</b>			
	Blue	Yellow	Similar responsibilities to 65% phase
<b>FINAL PS&amp;E</b>			
	Blue	Yellow	Similar responsibilities to 65% phase
<b>R/W Phase</b>			
R/W Mapping	Blue	Yellow	Caltrans to perform, STA's consultant to provide R/W Requirement limits STA will procure separately
R/W Acquisition	Yellow		
<b>Other</b>			
Tecnology Integration Component		Yellow	STA will procure separately. STA's design consultant to coordinate

# Technology Integration Component

1. Technology Integration Component
  - a) Lead in preparing RFQ for selecting Consultant for Design/Installation
  - b) Best and Final Offer (BAFO) Process
  - c) Provided RFP from I-80 EB Truck Scales Project



# CM/GC Project Delivery Method

1. CM/GC Project Delivery Method
  - a) Caltrans will Retain CM/GC and ICE
  - b) Consultant will Coordinate with CM/GC, ICE and Set Up Meetings, Etc.
  - c) Demonstrate Familiarity with CM/GC Project Delivery Method
  - d) Schedule Included in RFP – Design-Bid-Build
  - e) Evaluate Early Work Packages to Expedite Project Completion

May 5<sup>th</sup> - 4:00 PM

May 7<sup>th</sup> – COB

May 21<sup>st</sup> – 3:00 PM

Week of June 14<sup>th</sup>

Week of June 28<sup>th</sup>

End of July

Submit Questions for RFP

Post Responses to Questions on RFP

Proposals Due

Interviews for consultant selection

Top ranked firm/team notified

Work Commences

## *Important Dates*





Questions?

If you have additional questions regarding this project...

Please submit all questions to

**Anthony Adams, Senior Project Manager**

[aadams@sta.ca.gov](mailto:aadams@sta.ca.gov)

*Questions regarding this RFP are due by 4:00 PM (local), May 5, 2021*