



Solano Transportation Authority



Annual Report 2004



DO NOT
ENTER

301

401

EX



Solano Transportation Authority

Table of Contents

Annual Report 2004

Message from the STA Board	2
STA's Commitment	4
STA 2004 Highlights	6
Planning for the Future	8
Project Delivery	12
STA Financials	17
STA Board of Directors.....	18
STA Committees	19
STA Staff	20



Solano County



Message from the STA Board



- ➔ Transportation improvements in Solano County create local jobs that help vitalize and build the local economy and provide an improved quality of life for our residents.
- ➔ STA efforts assisted in many successes in 2004. We initiated and completed several important transportation and transit project studies, and secured construction funds for much needed highway and arterial improvements.
- ➔ The STA is dedicated to addressing Solano County's most urgent transportation needs by providing funding for highway and safety improvements, improving and expanding transit options, and for local projects such as road maintenance and bicycle projects.
- ➔ Despite recent state and federal cutbacks in transportation funding, the STA has been able to ensure continued progress on our top priority projects, such as the I-80/I-680/SR 12 Interchange, the Jepson Parkway and SR 12 (Jameson Canyon) projects. STA is working with the Metropolitan Transportation Commission and our state and federal representatives to obtain the maximum amount of regional, state and federal funds for Solano County's transportation projects.
- ➔ In 2004, the STA secured Solano County's share of Regional Measure 2 funds, including funding for the I-80/I-680/SR 12 Interchange (\$100 million), the Vallejo Ferry Station (\$28 million), the Fairfield/Vacaville Train Station (\$25 million), Intermodal Transit Stations in Benicia, Fairfield, Vacaville and Vallejo (\$20 million); and expanded Baylink Ferry service and intercity express bus service on I-80 and I-680 in Solano County.

The Solano Transportation Authority's Mission

is to improve the quality of life in Solano County by delivering transportation projects to ensure mobility, travel safety and economic vitality.



STA's Commitment

The Solano Transportation Authority (STA) was created under a Joint Powers Agreement in 1990 to serve as the Congestion Management Agency for Solano County. STA member agencies include the Cities of Benicia, Dixon, Fairfield, Rio Vista, Suisun City, Vacaville and Vallejo, and the County of Solano. STA is responsible for countywide transportation planning and coordination, delivering priority projects, programming federal, state and regional transportation funds, and managing the Solano Napa Commuter Information program and two transit services.

The STA Board sets goals and identifies priority projects to achieve these goals, which include the following:



1 Document transportation needs from both local and countywide perspectives

- Solano County Comprehensive Transportation Plan
- I-80/I-680/I-780 Corridor Study
- I-80/I-680/I-780 Transit Corridor Study
- Senior and Disabled Transit Study
- Local Streets and Roads Study
- Cordelia Truck Scales Relocation Study
- Countywide Bicycle Plan Update
- Countywide Pedestrian Plan
- Countywide Transportation for Livable Communities Plan

2 Provide safety and operational improvements

- Countywide Safety Projects
- Safe Routes to Schools Projects

3 Preserve the existing transportation system

- Local Transit and Transportation Maintenance and Capital Projects
- Senior and Disabled Transit Service

4 Reduce congestion and maintain mobility

- I-80/I-680 HOV Lanes Project
- Cordelia Truck Scales Relocation Study
- Benicia-Martinez Bridge
- I-80/I-680/SR 12 Interchange
- North Connector
- Jepson Parkway
- SR 37/29 Interchange
- SR 12 Jameson Canyon Improvements
- SR 12 Safety and Corridor Improvements
- SR 113 Improvements in Dixon



5 Improve commute options to Bay Area and Sacramento regions

- Express Route 30 Bus Service to Sacramento
- Commuter Rail Service
- Expanded Vallejo BayLink Ferry Service
- Expanded Express Bus Service along the I-80/I-680/I-780 Corridors and to the Vallejo BayLink Ferry Service

6 Promote transit, including intercity bus, rail and ferries

- Solano Napa Commuter Information
- Fairfield Transportation Center
- Vallejo Intermodal Station
- Fairfield/Vacaville Intermodal Train Station
- Dixon Intermodal Train Station
- Benicia Intermodal Station
- Suisun City Rail Station

7 Promote alternative modes of travel such as carpooling, vanpooling and bicycling

- Solano Napa Commuter Information
- Solano Countywide Bicycle Plan



8 Encourage candidate projects for Transportation for Livable Communities Program

- Benicia First Street Streetscape and Parking Enhancements
- Benicia State Park Road Bike/Pedestrian Bridge
- Benicia Intermodal Station
- Dixon Downtown Streetscape Phase 3
- Dixon Intermodal Station
- Fairfield West Texas Urban Village Project
- Downtown Fairfield Live-Work Center
- Fairfield/Vacaville Intermodal Train Station
- Main Street/Union Avenue Streetscape Enhancements Program in Fairfield
- Highway 12 Corridor in Rio Vista
- Rio Vista Waterfront
- Driftwood Drive Project in Suisun City
- Vacaville Creek Walk Extension to McClellan Street
- Vallejo Station Pedestrian and Streetscape Enhancements
- Downtown Vallejo Renaissance Project
- Mare Island Bicycle and Pedestrian Access Improvements
- Fairfield's North Connector Project
- Old Town Cordelia improvements
- Jepson Parkway

STA 2004 Highlights



1st Quarter



- Walters Road Widening Project in Suisun City (a segment of the Jepson Parkway Project) commenced construction.
- STA Board members traveled to Washington D.C. to pursue federal funding.
- 2004 Solano Congestion Management Program (CMP) approved.
- STA obtained \$4.6 million in federal funds from the Metropolitan Transportation Commission (MTC) for I-80/Leisure Town Road Overcrossing in Vacaville to replace State STIP funds.



2nd Quarter

- City of Vacaville opened bids for construction of contract for I-80/Leisure Town Interchange (a segment of Jepson Parkway Project)
- \$1.2 million in Congestion Management and Air Quality Improvement Program funds for Eastern Solano County (EC-MAQ) approved.
- Funding plan for allocation of State Transit Assistance Funds (STAF) for FY 2004-05 (\$692,745) and FY 2005-06 (\$450,000) approved.
- Solano County's long range priority projects for MTC's Regional Transportation Plan (T-2030) approved.



- Solano County Senior and Disabled Transit Study approved.
- Solano Countywide Bicycle Plan Update approved.



3rd Quarter



- \$1.89 million in second Cycle federal Surface Transportation Program (STP) funds for local streets and roads projects programming approved.
- Site located and recommendations for Cordelia Truck Scales Relocation Study approved.
- I-80/I-680/I-780 Major Investment & Corridor Study adopted.
- Dixon Community Based Transportation Plan approved.



- STA swapped Surface Transportation Program (STP) and CMAQ funds to accelerate project delivery and to fund Rio Vista Bridge Study, SR 113 Corridor Study, and SR 29 Corridor Study.
- SR 12 Transit Corridor Study initiated.

4th Quarter

- 7th Annual STA Awards Ceremony held in Fairfield.
- Solano Countywide Transportation for Livable Communities (TLC) Program Plan approved.



- Solano Countywide Pedestrian Plan approved.
- City of Fairfield opened Phase II of the Fairfield Transportation Center.
- I-80/I-680 Aux Lane Project construction completed and open to traffic.



Planning for the Future

Solano Comprehensive Transportation Plan

The Association of Bay Area Governments projects that Solano County will have the largest percentage of population and job growth of any county in the Bay Area during the next 25 years. Our population will grow from 416,000 in 2003 to an estimated 577,000 in 2025. While many new major employers are making the move to Solano County, a large number of Solano residents commute to jobs within Solano County and other counties—making the commute traffic on I-80, I-680, I-780 and State Route 12 an increasingly critical transportation problem. At the same time, Solano County has an increasing need for senior and disabled transit service, local roads maintenance and repair, and local intersection, bikeways and pedestrian safety projects.



The updated Solano Comprehensive Transportation Plan (CTP) will identify and highlight how Solano County addresses its overall transportation needs for roads, highways and freeways, and will provide transit, bicycle, pedestrian, and transportation/land-use alternatives through 2030. First completed in 2002, the updated CTP will be developed in partnership with STA's many transportation partners and the public.

TEA-21 Reauthorization

The Transportation Equity Act for the 21st Century (TEA-21) was enacted in 1998 to ensure a strong and integrated national transportation and transit system, improve the environment and expand employment opportunities. The Business, Transportation and Housing Agency and the California Alliance for Jobs estimate that one job is created for every \$20,000 in transportation funding. The U.S. Department of Transportation selects projects for funding based on a stringent set of criteria, including local financing. STA has been quite successful in getting state funds to match or supplement federal earmark funds, and local agencies have also committed significant local funds. During 2004, STA developed priority projects for funding in 2004 (more details available in "Project Delivery" section). In the next five years, Federal TEA-21 Reauthorization will provide new federal funds for Solano County projects.

“

The U.S. Department of Transportation selects projects for funding based on a stringent set of criteria...

”

“
The study
recommends 39
immediate and mid-
term improvement
projects...”

”

I-80/I-680/I-780 Corridor Study

STA completed the in-depth study in July 2004 of all segments of the I-80/I-680/I-780 corridors, developing detailed analyses of traffic patterns and future travel demands. The public provided valuable input during a series of community meetings held in 2003. The study recommends 39 immediate and mid-term improvement projects intended to serve traffic needs until 2020, based on bottlenecks, queues and delays during different time horizons. The study also identified 26 long-term improvement projects, 39 local interchange improvements, and improvements to the Cordelia Truck Scales, which were developed working with local City Public Works Departments and Caltrans.

I-80/I-680/I-780 Transit Corridor Study

The I-80/I-680/I-780 Transit Corridor Study was completed in July 2004 in tandem with the long-term highway corridor study. The study investigated intercity express bus service along the I-80/I-680/I-780 corridors that can provide alternatives for relieving long commutes. The Corridor Express Bus Service Plan consists of 11 bus routes that focus on key regional transportation destinations both within Solano County (such as the Vallejo Ferry Terminal, the Fairfield Transportation Center and proposed transit centers in Benicia and Vacaville) and to regional destinations such as Bay Area Rapid Transit (BART), Contra Costa County, UC Davis and Sacramento. The study details the elements necessary to implement enhanced and efficient express bus service, such as new high occupancy vehicle (HOV) lanes located on I-80, increased transit operator coordination and multiple park-and-ride lot improvements.

Cordelia Truck Scales Relocation Study

The STA completed the Cordelia Truck Scales Relocation Study and the STA Board recommended to the State to relocate and re-construct new scales within the I-80/I-680/SR 12 Interchange with a design that includes shorter entrance and exit ramps. STA continues to work with Caltrans and CHP to better define the actual configuration of the inspection facilities and ramps. STA staff and consultants met with staff from several resource agencies (the Bay Conservation and Development Commission, California Fish and Game Department and U.S. Fish and Wildlife Service) and received guidance on how to proceed with evaluating the potential impacts of this project on the Suisun Marsh.



Local Streets and Roads Study

STA worked with City and County Public Works Departments to develop accurate costs and an investment strategy for both pavement and non-pavement (curbs and gutters, traffic signals, sidewalks) preventative maintenance for the next 25 years. The updated cost data was compared to an estimate of local revenues available (gas tax, transportation development act funds, general funds, etc.), to determine that Solano County will have a revenue shortfall of almost \$600 million for local streets and roads over the next 25 years. This study, combined with results from other similar studies in the Bay Area, resulted in the STA successfully advocating for an increase in regional funding for local streets and roads over the next 25 years.

Rail Studies

STA has one phase of the regional rail study in progress to provide commute alternatives, in partnership with other regional agencies.

The I-80 Oakland to Sacramento Regional Rail Study (Phase 2) is evaluating options for operating passenger rail service on the existing Capitol Corridor line, connecting with BART at its Richmond station and to Davis and Sacramento lines. This plan recommends three additional commuter trains traveling between Sacramento and Oakland, with departures every half hour during peak commute hours.

Senior and Disabled Transit Study

The older population in Solano County will grow faster than in any other Bay Area county. By 2030, over 19% of Solano County's residents will be over 65. STA completed the Solano County Senior and Disabled Transit Study including stakeholder interviews, focus groups and a mailback survey to analyze needs in each city by type of trip, time of day, destinations, and improvements needed in the next 10 years. Based on that research and public input, the study recommended a range of service improvements over the next 25 years to support the needs of a growing senior and disabled population.

“The older population in Solano County will grow faster than in any other Bay Area county.”





Solano Countywide Bicycle Plan Update

STA is continuing efforts to develop a unified bicycle system connecting all seven cities throughout Solano County. The 2004 Bicycle Plan update recommends completing the 142-mile county bicycle network of new bikeways, improvements to existing bikeways, and developing education and promotional programs. Total estimated cost for the construction of the entire countywide bicycle network is \$56 million.

Solano County Transportation for Livable Communities (TLC) Plan

The STA adopted the Solano County TLC Plan in October 2004. The TLC Plan was created in an effort to partner with Solano County cities and the County of Solano to implement transit-oriented development (TOD) and livable communities/land use concepts with available transportation planning and capital funds. The Plan identifies several candidate TLC projects from each of the STA's member agencies. In December 2004, the STA Board initiated a call for projects for \$125,000 of TLC planning grants. A separate TLC capital call for projects for a total of \$1.4 million is expected in 2005.

Solano Countywide Pedestrian Plan

The Solano Pedestrian Advisory Committee (PAC) consisting of members from the cities and County of Solano assisted the STA in developing a Countywide Pedestrian Plan which identifies pedestrian improvements throughout Solano County. The Plan was one of the first Bay Area planning documents that focused on countywide planning activities specifically for pedestrian facilities. The STA Board unanimously approved the Solano Countywide Pedestrian Plan in October 2004. In recognition of this innovative and collaborative planning effort, the Northern Chapter of the American Planning Association awarded the STA the "Outstanding Planning: Planning Implementation – Large Jurisdiction" for the Solano Countywide Pedestrian Plan in 2005.

“
...recommends
completing the
142-mile county
bicycle network of
new bikeways...”

”



Project Delivery



I-80/I-680/SR 12 Interchange

The STA Board has identified the I-80/I-680/SR 12 Interchange as the highest priority transportation project in Solano County. Improvements to this critical link between the Bay Area and Sacramento are made even more urgent by completion of the new Benicia-Martinez Bridge. The PA/ED Phase (Project Approval/Environmental Documents) of the project continues on schedule. The project will greatly improve automobile, bus and truck traffic flow, integrating HOV lanes with additional travel lanes and a parallel local system roadway. The project has multiple phases to take advantage of funding, as it becomes available. Several elements have also been separated from the main project (Auxiliary Lanes and North Connector, see below) to provide more immediate traffic relief.

The environmental impact studies for the full I-80/I-680/SR 12 Interchange project will be completed in 2007-08. STA, Caltrans and STA member agencies are analyzing various alternatives to maintain an acceptable level of service during construction. The full project is estimated to cost about \$500 to \$800 million.

New Benicia-Martinez Bridge

Caltrans continues its work on the new northbound span of the Benicia-Martinez Bridge, after developing a plan to minimize impacts on fish traveling through the Carquinez Strait. The STA continues to work with MTC, Caltrans, Contra Costa County and the city of Benicia to address local issues. The new Benicia-Martinez Bridge will have five northbound lanes, four southbound lanes, a bicycle/pedestrian lane and capacity to add future rail service. A new 17-booth toll plaza is being constructed on the Contra Costa side and a new interchange at I-680/I-780 is being constructed on the Solano County side. The project is funded by Regional Measure 1 and 2.



I-80/I-680 Auxiliary Lanes (I-80 Widening Project)

The I-80/I-680 Auxiliary Lane project added a fifth through-lane in each direction on I-80 between I-680 and State Route 12 (east), as well as expanded the existing one-lane connector ramp to two lanes between I-80 and I-680 (both directions). This project was the first of many future phased improvements being planned on I-80/I-680/SR 12 Interchange. The project was completed and opened for traffic in December 2004.



“
...construction of
the first phase of
this three-phase
project is scheduled
for completion in
2008...”

North Connector

The North Connector project will link the east and west sections of State Route 12, providing local traffic an alternative to using I-80. The project is a four-mile arterial connection in Fairfield, north of I-80 between SR 12 West and SR 12 East. The roadway will parallel I-80 between Abernathy Road and Suisun Valley Road, then connect with Business Center Drive and extend west to connect with SR 12 at the intersection of Red Top Road. The environmental report will be available for public comment in FY 2005-06 and construction of the first phase of this three-phase project is scheduled for completion in 2008, depending on the availability of state and federal funding. The total project is estimated to cost about \$94 million.

Jepson Parkway

This innovative multi-modal corridor will increase mobility for residents within Solano County. The four-lane Parkway is a 12-mile alternative to I-80 for local traffic between the cities of Vacaville, Fairfield and Suisun City. It links the existing road segments of Leisure Town, Vanden and Walters Roads and includes three bridges, railroad grade separations, traffic signals and improved intersections.

The project has been divided into 10 segments for funding and prioritizing. About \$80 million in local, state and federal funding has been secured. Two segments have been completed and two more phases are scheduled for completion in 2005 (Walters Road widening in Suisun City) and 2006 (Leisure Town Road Interchange in Vacaville). STA has requested an additional \$23 million in TEA-21 funding, which will be combined with existing local and state funding. The cost of the entire project is expected to exceed the 2003 estimate of \$143 million and be completed between 2010 and 2015, depending upon the availability of local, state and federal funding.





State Route 37/29 Interchange

State Route 37 passes through the sensitive waterways near Mare Island. Phase I of this project restored tidal wetlands at Guadalcanal Village. Phase II and III, now under construction, are completing a four-lane freeway in each direction from the Napa River Bridge to Diablo Street in Vallejo, and constructing a cloverleaf interchange at Highway 37/29. Caltrans is scheduled to complete the project in September of 2005 at a cost of \$124 million.

Highway 12 – Jameson Canyon

STA and the Napa County Transportation Planning Agency (NCTPA) have secured \$5.6 million in state funds to complete environmental and design work for realignment and safety enhancements on Highway 12 between I-80 in Solano County and Highway 29 in Napa County. The project is currently in the environmental phase with Caltrans as the lead agency. The project is estimated to cost approximately \$115 million.



Express Route 30 Bus Service

2004 was the first full year of Express Route 30 bus service to Sacramento. The STA continues to market and monitor the expanded Route 30 service to meet the commuting needs of Solano County residents. Solano Express Route 30 bus service now follows I-80 from the Fairfield Transportation Center, Vacaville, Dixon, Davis and on to Sacramento. Through the streamlining of this service, monthly ridership has doubled and the farebox ratio has improved.





Fairfield Transportation Center

The STA allocated federal funds to the City of Fairfield to complete the Fairfield Transportation Center, providing much needed parking for commuters who use express buses, carpools and vanpools. In addition to the parking structure, the center offers retail and office space to provide more security for commuters. There are bike lockers and a bike rack to facilitate pedestrian and bicycle commuter modes. A second phase was completed in 2004, adding a total of 240 additional parking spaces for commuters. The center also has 24-hour, 365-days-a-year onsite manned security. A final phase improvement will consist of an additional parking structure with 600 spaces, and design is expected to commence by the end of 2005.



Vallejo Intermodal Station

The Vallejo Intermodal Station will be the primary ferry/transit terminal in the North Bay, providing congestion-free transit to 15,000 daily riders. The Baylink Ferry is the most successful ferry service in the Bay Area—with three high-speed ferries in service—and is a vital link between San Francisco and Solano County. The new station will act as a catalyst for attracting private-sector investment in Vallejo's

downtown and along the waterfront. Surrounding land uses will transition to residential and "live work space," small retail offices, restaurants, open space and a renewed and dynamic downtown Vallejo waterfront.

The project will provide up to 1,800 off-street parking spaces, new local and regional bus transfer facilities, roadway access improvements, and new bicycle/pedestrian connections between downtown Vallejo, the intermodal station and the waterfront area. Regional express buses from this location will serve Napa Valley, key BART stations, multiple stations along I-80 to Fairfield, Vacaville, Davis and Sacramento.

STA and the city of Vallejo have secured \$47.8 million in funding and are requesting \$9 million in federal funds, in addition to future state and local funds. The project is estimated to cost \$65 million and construction is scheduled to begin in 2008-09.

The project will provide up to 1,800 off-street parking spaces...

Fairfield/Vacaville Intermodal Train Station

This transit-oriented development at the crossroads of Jepson Parkway and Peabody Road will provide automobile, bus, vanpool, bicycle and pedestrian access to Capitol Corridor Rail Service. The station and related track improvements are key to meeting ridership requirements that will allow Capitol Corridor to expand service by 2008 from 12 to 16 intercity trains a day, plus additional peak hour commuter service by 2010-2015. Trains will serve employees traveling to Travis Air Force Base and the major employment centers in Fairfield and Vacaville.

The project is estimated to cost \$35 million; \$29 million in local, regional, state and federal funds have been secured and STA and the city of Fairfield are requesting \$2.5 million additional in federal appropriations funds.



Solano Napa Commuter Information

The Solano Napa Commuter Information (SNCI) program provides information about transit, carpools and vanpools to Solano and Napa County residents and employees. The SNCI program is a partnership between the STA, the Napa County Transportation Planning Agency, MTC, and the Bay Area Air Quality Management District and the Yolo Solano Air Quality Management District.

Solano County commuters continue to have the longest average commutes in the Bay Area—and the highest percentage of car/vanpooling in the Bay Area. SNCI program staff work with Solano and Napa employers and the business community to promote alternative transportation. SNCI also provides incentives to encourage residents to choose methods other than single occupancy cars for their commute, work closely with transit operators to provide up-to-date local and regional bus, rail and ferry information and work one-on-one with residents to create individualized alternative transportation plans.

SNCI coordinates countywide outreach campaigns to promote alternative commute options such as The Great Race for Clean Air and California Bike to Work Day. SNCI program staff attends and participates in dozens of community events such as farmer's markets, job fairs, business expos, and community festivals in order to provide services to Solano County and Napa County residents.

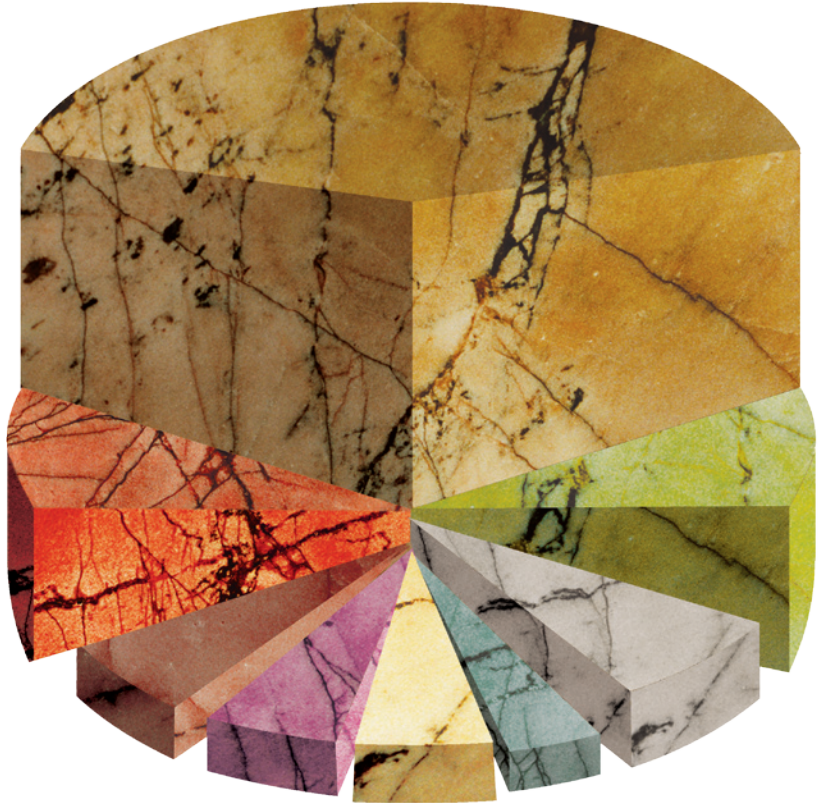


STA Financials

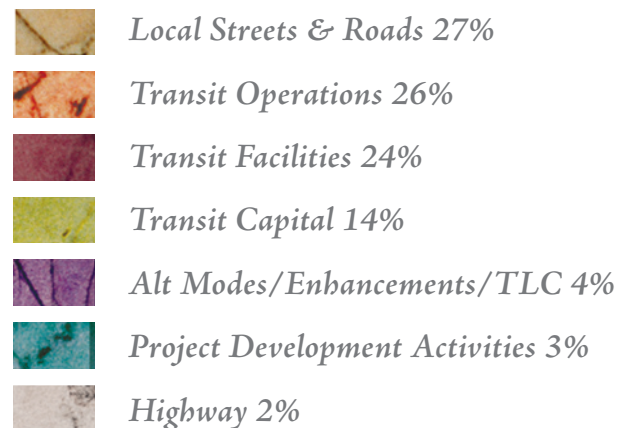


STA Budget FY 2003-04

Budget: \$8.7 million



STA State & Federal Programming FY 2003-04 (in 1000s)



STA's 2004 Board of Directors

Members of the Solano Transportation Authority (STA) Board of Directors are appointed by their local jurisdictions to serve as representatives. Each of the seven Solano cities and the County of Solano have one Board member and alternate who work together to address a wide array of transportation issues and priorities.



Karin MacMillan, Chair
Mayor, City of Fairfield



Mary Ann Courville, Vice Chair
Mayor, City of Dixon



Steve Messina
Mayor, City of Benicia



Marci Coglianese
Mayor, City of Rio Vista



Jim Spering
Mayor, City of Suisun City



Len Augustine
Mayor, City of Vacaville



Anthony Intintoli
Mayor, City of Vallejo



John Silva
Member, Solano County
Board of Supervisors

Alternates

Dan Smith
Council Member, City of Benicia

Gil Vega
Vice Mayor, City of Dixon

Harry Price
Vice Mayor, City of Fairfield

Ed Woodruff
Vice Mayor, City of Rio Vista

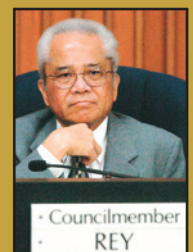
Michael Segala
Council Member, City of Suisun City

Rischa Slade
Council Member, City of Vacaville

Pete Rey
Council Member, City of Vallejo

John Vasquez
Board of Supervisors Member,
Solano County

In Memory, Pete Rey 1937 – 2005



The STA Board and staff remember with appreciation Pete's many years of public service to the residents of Solano County.

STA Committees

Technical Advisory Committee

Public Works Directors and other staff representing each member jurisdiction and serve on the STA Technical Advisory Committee (TAC). The TAC provides input and recommendations to the STA Board of Directors on transportation projects and funding affecting Solano County.

Dan Schiada City of Benicia	Paul Wiese County of Solano
Janet Koster City of Dixon	Gary Cullen City of Suisun City
Charles Beck City of Fairfield	Dale Pfeiffer City of Vacaville
Robert Meleg City of Rio Vista	Mark Akaba City of Vallejo

Transit Consortium

Members of the SolanoLinks Intercity Transit Consortium consist of local transit staff. The Consortium helps coordinate intercity transit issues and provides input and recommendations on transit plans, services and funding to both the TAC and the STA Board of Directors.

Rob Sousa City of Benicia	Trent Fry City of Vacaville
Jeff Matheson City of Dixon	John Harris City of Vallejo
Kevin Daughton City of Fairfield	

Bicycle Advisory Committee

The Bicycle Advisory Committee updates and monitors the Countywide Bicycle Plan and makes recommendations for bicycle projects and funding to the STA TAC and the STA Board of Directors.

J.B. Davis, Chair City of Benicia	Larry Mork City of Rio Vista
Glen Grant, Vice Chair Solano County	Michael Segala City of Suisun City
James Fisk City of Dixon	Ray Posey City of Vacaville
Randy Carlson City of Fairfield	Mick Weninger City of Vallejo
	Bill Schmidt Member-at-Large

Pedestrian Advisory Committee

The Pedestrian Advisory Committee (PAC) updates and monitors the progress of the Solano Countywide Pedestrian Plan and makes funding recommendations for countywide pedestrian-related projects to the STA TAC and the STA Board of Directors.

Eva Laevastu, Chair Tri City and County Cooperative Planning Group
Kathy Blume Bay Area Ridge Trail Council
Jim Erickson City of Benicia
Michael Segala City of Suisun City
Mary Woo City of Vacaville

Paratransit Coordinating Council

The Paratransit Coordinating Council works on countywide senior and disabled transit issues and makes recommendations on transit and paratransit funding, claims and coordination.

Jim Williams, Chair Member-At-Large Representative
Catarina Evanson, Vice Chair Solano Community College Representative
George Bartolome Social Service Provider Representative
Ernest Bradford Elderly Representative/Metropolitan Transportation Commission Elderly and Disabled Advisory Committee (MTC EDAC) Representative
Rich Broaddus Social Service Provider Representative
Fred Ramsey Disabled Representative
Jim Simon Social Service Provider Representative

STA Staff Members

STA staff strives to efficiently and effectively manage administration, strategic planning, and project/program development activities. The staff implements policies of the STA Board and coordinates with local project managers, the public and regional, state and federal transportation agencies.

STA's Solano Napa Commuter Information program provides ridesharing and transit information to Solano and Napa County commuters who travel to jobs throughout Solano and Napa Counties, and the Bay Area and Sacramento.



Daryl Halls

Executive Director

Dan Christians

Assistant Executive Director/Director of Planning

Vacant

Director of Projects

Elizabeth Richards

Director of Transit and Rideshare Services

Johanna Masiclat

Acting Clerk of the Board

Jayne Bauer

Marketing and Legislative Program Manager

Anna McLaughlin

SNCI Program Manager/Analyst

Susan Furtado

Financial Analyst/Accountant

Robert Guerrero

Associate Planner

Jennifer Tongson

Assistant Project Manager

Barbara Padilla

Accounting Assistant

Sam Shelton

Planning Assistant

Sorel Klein

SNCI Commute Consultant

Yolanda Dillinger

SNCI Commute Consultant

Karen Koelling

Administrative Assistant



Solano County Transportation Facts & Figures



- Capitol Corridor carries 1.2 million passengers annually between San Jose and Sacramento to 16 stations along the 170-mile rail line
- 33% more trains added in 2003
- Recent track upgrades increased reliability from 79% to 86%



- 356,502 total registered vehicles
- Average drive-alone rate is 71%



- 1% of all Solano County daily commuters are bicycle commuters
- 14 park and ride lots, 9 with bicycle parking facilities



- Six transit systems operated by Solano jurisdictions: Benicia Transit, Dixon Ready-Ride, Fairfield/Suisun Transit, Rio Vista Transit, Vacaville City Coach, Vallejo Transit
- 722,000 annual transit system rides
- 6,000 annual intercity transit trips

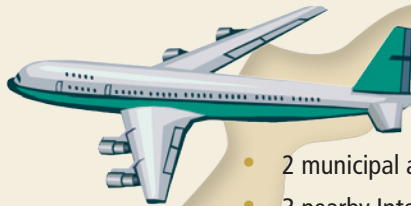


In 2004, Solano Napa Commuter Information:

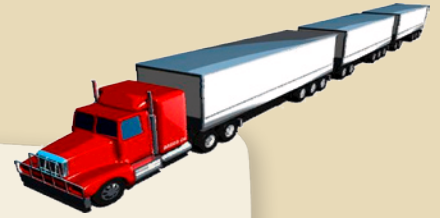
- Assisted 6,550 individuals
- Distributed 53,000 pieces of public transit literature



- 51 Import/Export Brokers
- 115 Freight Forwarders in other port services



- 2 municipal airports (Nut Tree and Rio Vista)
- 3 nearby International, Commercial, & Commuter Airports (San Francisco, Oakland, and Sacramento)
- Travis AFB, the U.S. Air Force's strategic airlift and aerial refueling "Gateway to the Pacific" base



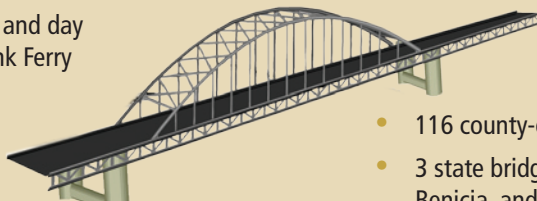
- 196,000 daily vehicle trips on the I-80/I-680 corridor
- 72,396 registered trucks
- 600 miles of maintained county roads and 158 miles of state highways
- 3,000 trucks inspected daily at the Cordelia Truck Scales



- 2005 Population: 418,000
- 2% of the commute mode is pedestrian
- Nearly every trip on transit includes 2 pedestrian trips



- Vallejo Baylink Ferry fleet has 4 boats, 3 used in daily operation
- 3,000 daily commuters and day travelers ride the Baylink Ferry



- 116 county-owned bridges
- 3 state bridges: Al Zampa (Carquinez), Benicia, and Rio Vista



- Highest commuter carpool and vanpool rate (22%) in the Bay Area



Solano Transportation Authority

**One Harbor Center, Suite 130
Suisun City, CA 94585**

Main Telephone Number
(707) 424-6075

Fax Number
(707) 424-6074

General Email
staplan@sta-snci.com

Website Homepage
www.solanolinks.com