

SOLANO TRANSPORTATION AUTHORITY
**COMPREHENSIVE TRANSPORTATION
PLAN**
EQUITY WORKING GROUP MEETING #1

Charles T. Brown, MPA

Working Group Equity Perspectives & Transportation Equity Framework

Solano Transportation Authority (STA)

Suisun City Council Chambers, 701 Civic Center Blvd,

Suisun City, CA 94585

3:30 p.m., Wednesday, March 13, 2019



Agenda

- Facilitator introduction and Background
- Open dialogue with committee members
- Brief overview of upcoming Solano County workshops
- Brief overview of Environmental Justice
- Brief overview of MTC, SB535 and CalEnviroScreen
- Solano County Framework: geographic areas for equity analysis



Charles T. Brown, MPA

- “Street-level Researcher”
- Years of Experience: 17
- Master of Public Administration, Urban and Regional Planning
- Graduate Certificate in Geographic Information Systems
- U.S. Army Veteran
- NHI/FHWA EJ Analysis Course Developer/Instructor
- NTI/FTA Course Workshop Developer/Instructor
- 2013 National Planning Achievement Award for Implementation
- 2013 Smart Growth Award for Inclusive Transportation Policy
- Nominated 2017 LA Streetsies “Advocate of the Year”

Select Federal, State, Regional and Local Projects

Federal

- FHWA EJ Analysis Course (NHI 142075)
- FTA/NTI Advanced-Level EJ Workshop Course
- FHWA Fundamentals of EJ Web-based Training Tool

State

- Vehicle-Pedestrian Crashes in Low-Income and Minority Communities - NJDOT
- Complete Streets Equity Policy Analysis – Georgia Bikes
- Assessing the Walking Needs and Barriers of Seniors - NJDOT

Regional

- South Central Penn MPO EJ Benefits and Burdens Process Development – York County (PA)
- Transportation Gaps to Healthy Amenities Study - DVRPC
- Complete Streets Technical Assistance Project - NJTPA

Municipal

- Bike Share Equity Focus Groups – City of Baltimore
- Vision Zero Action Plans & Bike Master Plans – NJ and FL
- Barriers to Biking in Big Jump Cities - PFB

EQUITY: Committee Group Perspectives



*"Cooperation, Complete Streets and Congestion, Making Transportation Work Together: A Regional Conversation,"
Charlotte, SC. January 2019.*



JCT

509

NO STOPPING
ANY TIME
IN THIS ZONE
EXCEPT TO
LOAD OR UNLOAD
GOODS OR
PASSENGERS
OR TO REVERSE
OR TO DELIVER
OR PICK UP
OR TO TAKE
OR DROP
OFF OR
PICK UP
OR TO
DELIVER
OR PICK UP
OR TO
DELIVER
OR PICK UP

PARK GROVE
ANTIQUARY

LEFT LANE
MUST
TURN LEFT

PEDESTRIAN

NO PARKING

ANY TIME

EXCEPT TO

LOAD OR UNLOAD

GOODS OR

PASSENGERS

OR TO REVERSE

OR TO DELIVER

OR PICK UP

OR TO TAKE

OR DROP

OFF OR

PICK UP

OR TO

DELIVER

OR PICK UP

OR TO

DELIVER

OR PICK UP

OR TO

DELIVER

OR PICK UP

OR TO

DELIVER

OR PICK UP

OR TO

DELIVER

OR PICK UP

OR TO

DELIVER

OR PICK UP



JCT
509

509

NO STOPPING
NO PARKING
ANYTIME

NO STOPPING
NO PARKING
ANYTIME

NO STOPPING
NO PARKING
ANYTIME

NO STOPPING
NO PARKING
ANYTIME

NO STOPPING
NO PARKING
ANYTIME

NO STOPPING
NO PARKING
ANYTIME

NO STOPPING
NO PARKING
ANYTIME

NO STOPPING
NO PARKING
ANYTIME

NO STOPPING
NO PARKING
ANYTIME

NO STOPPING
NO PARKING
ANYTIME

NO STOPPING
NO PARKING
ANYTIME

NO STOPPING
NO PARKING
ANYTIME

NO STOPPING
NO PARKING
ANYTIME



What is Equity?

“Equity involves trying to understand and give people what they need to enjoy full, healthy lives.”

“The presence of justice and fairness within the procedures, processes and distribution of resources by institutions or systems.”

“Facing equity issues requires an understanding of the underlying or root causes of inequalities and oppression within our society.”

UPCOMING WORKSHOPS

EQUITY MEETING DISCUSSION TOPICS

EQUITY				
Equity Working Group Meeting #1 - 3/13/2019 (CB)	Introduce Scope and Schedule of the Equity Chapter	Discuss their personal definitions of "Equity" and the issues they've observed in Solano	Discuss how Transportation can affect Equity and how STA can take a proactive role	Charles Brown will introduce himself and his work
Equity Working Group Meeting #2 (April)	Planning for the Public Equity Workshop and what topics are important to breach and who/how to promote	Begin developing Equity "Guiding Principles"		
Equity Working Group Meeting #3 (Late May)	Reflect on the Public Equity Workshop and what were the major take-aways	Continue refining Equity "Guiding Principles"	Discuss results of the Transportation Equity Analysis	
Equity Working Group Meeting #4 (June)	Present the draft Equity Chapter	Review Key findings and conclusions	Discuss how STA's first next steps to implement	

TRANSPORTATION EQUITY FRAMEWORK



I-105/405 interchange bisecting four communities in Los Angeles, CA. Source: California Department of Transportation

What is Environmental Justice?

Executive Order 12898

“Each Federal agency shall make achieving EJ part of its mission by identifying and addressing, as appropriate, disproportionately high and adverse environmental effects of its programs, policies, and activities on minority populations and low-income populations.”

- Executive Order (EO) 12898, Federal Actions to Address EJ in Minority Populations and Low-Income Populations, 1994



Who are “Protected” Populations under EJ?

- **Minority**
 - Black or African American
 - Hispanic or Latino
 - Asian American
 - American Indian and Alaska Native
 - Native Hawaiian and other Pacific Islander
- **Low-Income**
 - A person whose household income is at or below the US Department of Health and Human Services (HHS) poverty guidelines level.

Persons in Family/ Household	Poverty Guideline (2018)
1	\$12,140
2	\$16,460
3	\$20,780
4	\$25,100
5	\$29,420
6	\$33,740
7	\$38,060
8	\$42,380

2018 Poverty Guideline Table

What are the Guiding Principles of EJ?

- To avoid, minimize, or mitigate **disproportionately high and adverse effects...**, including social and economic effects, on minority populations and low-income populations
- To ensure the **full and fair participation** by all potentially affected communities in the transportation decision making process
- To prevent the denial of, reduction in, or **significant delay in the receipt of benefits** by minority and low-income populations

Federal Highway Administration
Environmental Justice Reference Guide

April 1, 2015

 U.S. Department of Transportation
Federal Highway Administration



Definitions

- ***Adverse effects*** refer to the totality of significant individual or cumulative human health or environmental effects, including interrelated social and economic effects...and the denial of, reduction in, or significant delay in the receipt of benefits.

Definitions

Categories of Adverse Effects

Bodily impairment, illness, or death

Air, noise, or vibration

Water pollution and soil
contamination

Destruction or disruption:
Human-made or natural resources,
Community cohesion or economic
vitality, or
Availability of facilities and services

Adverse employment effects

Displacement of persons,
businesses, farms, etc.

Increased traffic congestion

Isolation, exclusion, or separation
of individuals

Denial of benefits



Definitions

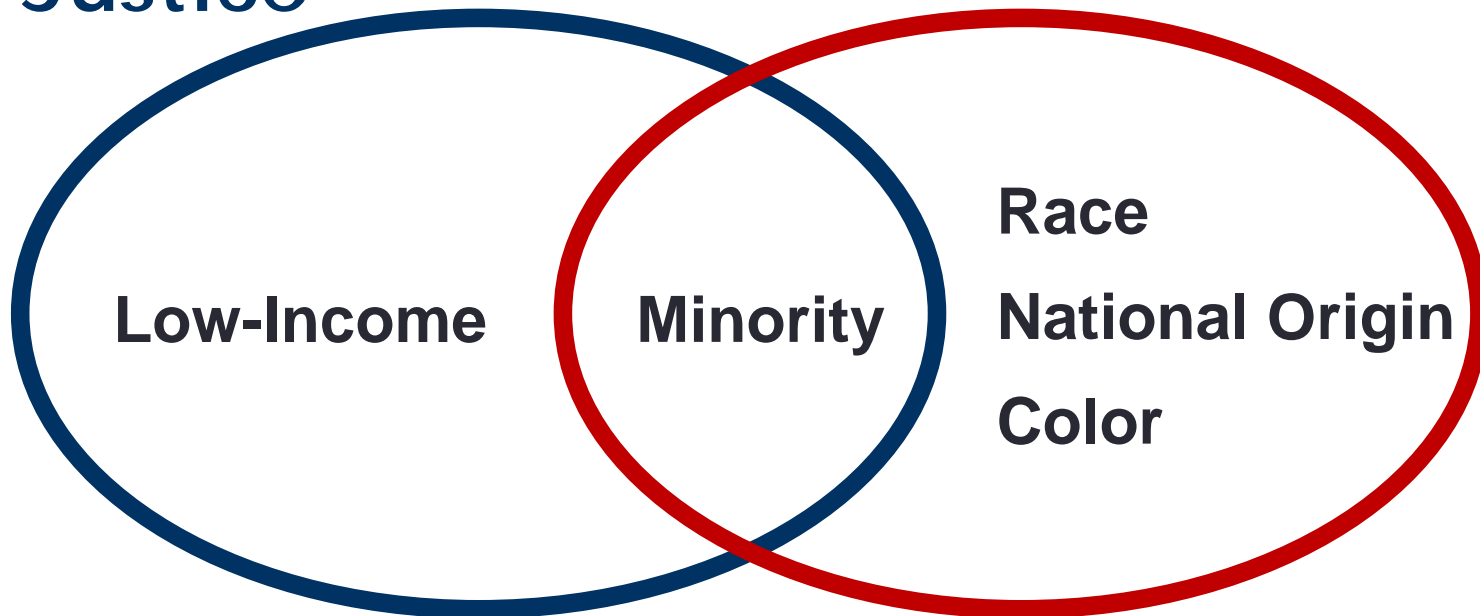
- A “disproportionately high and adverse effect” is . . .
 1. “predominantly borne by a minority population and/or a low-income population,” or
 2. “Will be suffered by the minority population and/or low-income population and is appreciably more severe or greater in magnitude than the adverse effect that will be suffered by the non-minority population and/or low-income population.”

Key Characteristics of EJ & Title VI

EJ and Title VI Relationship

**Environmental
Justice**

Title VI

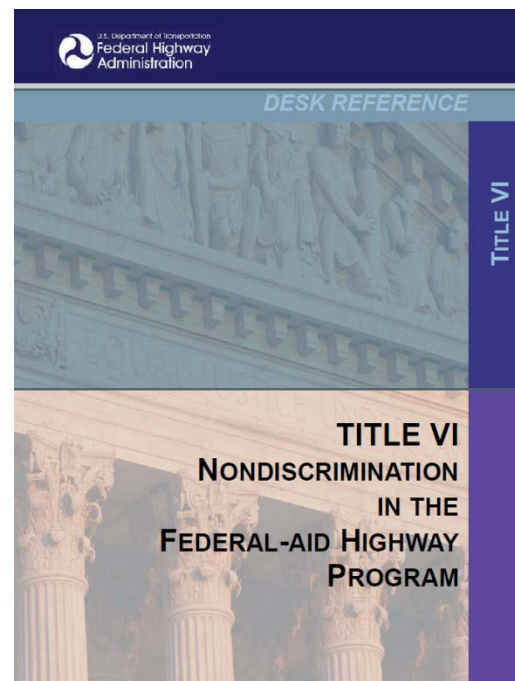


Role of FHWA / FTA Certification Review

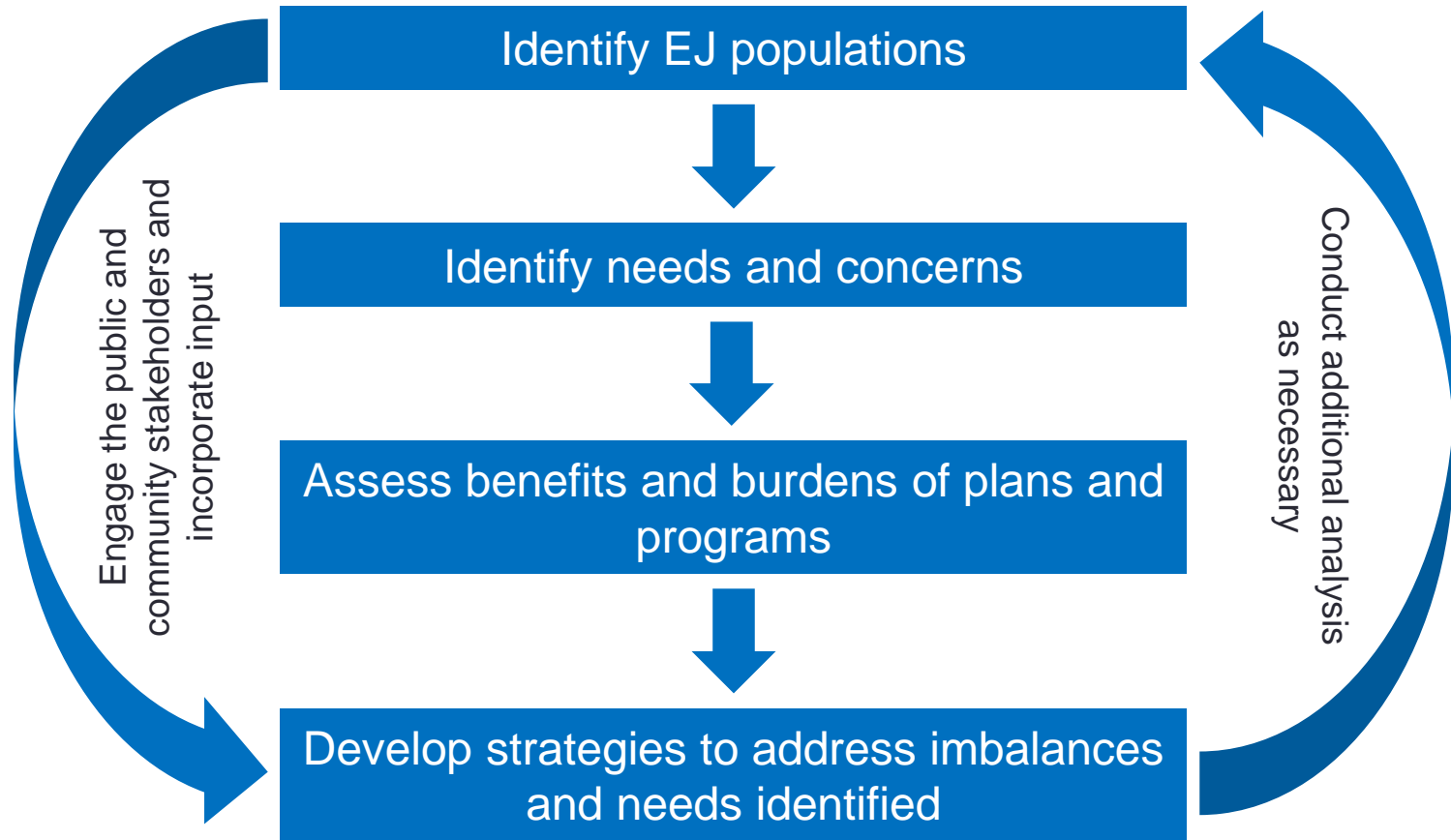
- Capability Review Topics
 - Overall Strategies and Goals
 - Service Equity
 - Public Involvement

Overall Strategies and Goals:

Has the planning process developed a demographic profile of the metropolitan planning area or State that includes identification of the locations of socio-economic groups, including low-income and minority populations...?

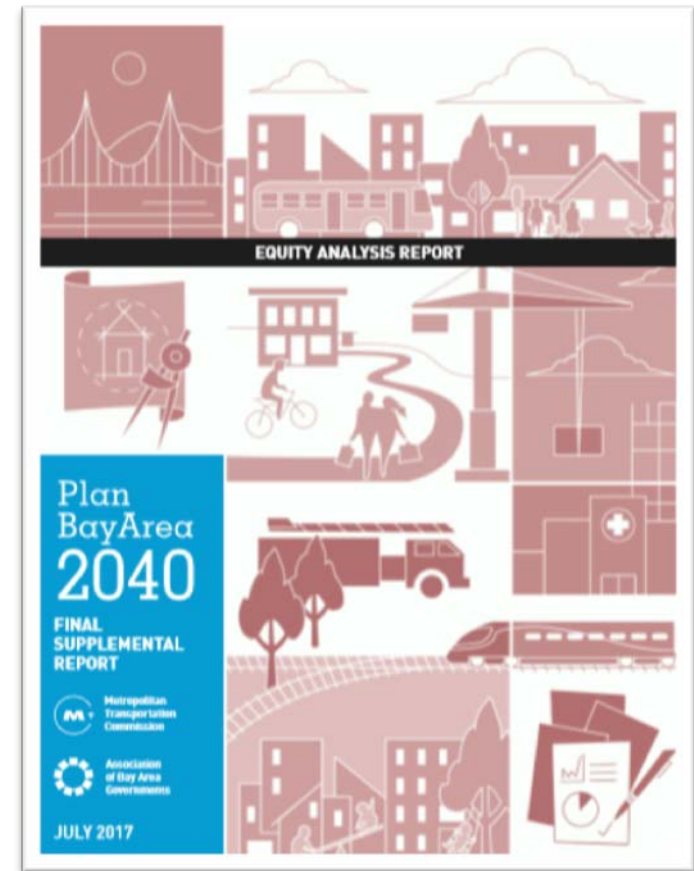


Principal Actions Framework



Metropolitan Transportation Commission (MTC)

- **Purpose:** To estimate the distribution of benefits and burdens...and to assess whether these benefits and burdens are shared equitably across all population groups.
- Equity is one of three overarching themes in PBA 20140: *equity, environment, and economy*. “3 E’s”
- Relies on a comparison of benefits and burdens of proposed policies and investments on different population groups and across different geographies.



Metropolitan Transportation Commission (MTC)

MTC defines communities of concern (CoC's) as census tracts that have a concentration of both minority and low-income residents, or that have a concentration of low-income residents and any three or more of these six disadvantage factors.

Table 2-1: Plan Bay Area 2040 Communities of Concern Thresholds

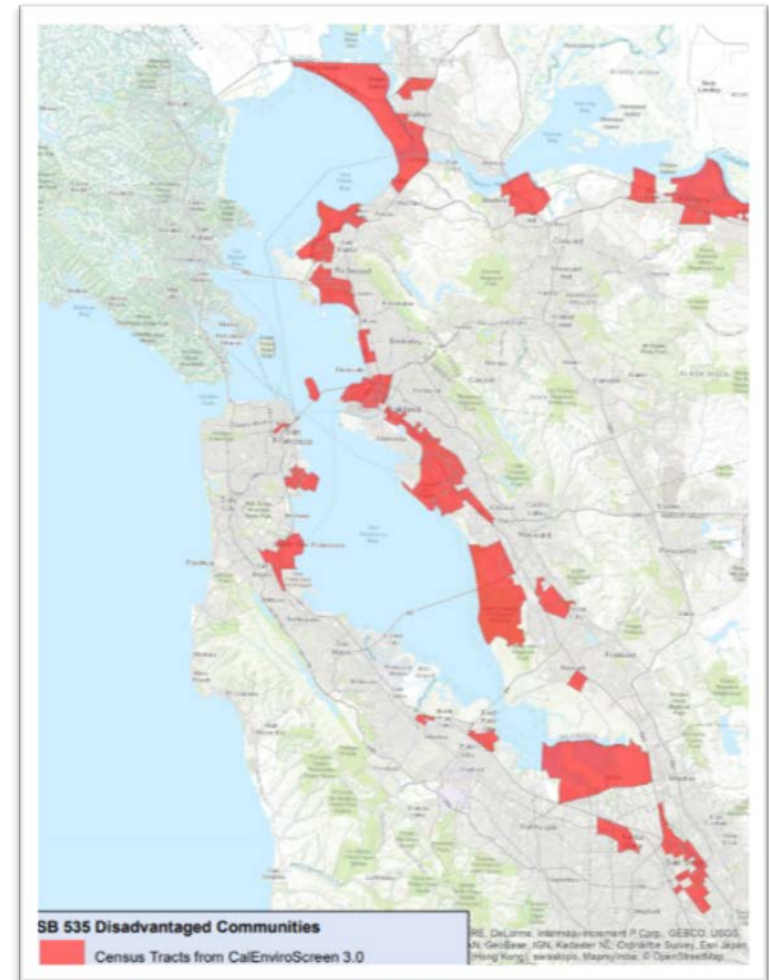
Disadvantage Factor	Share of Regional Population 2009	Share of Regional Population 2014	Concentration Threshold*
Minority	54%	59%	70%
Low-Income	23%	25%	30%
Limited English Proficiency	9%	9%	20%
Zero-Vehicle Household	9%	10%	10%
Senior	6%	6%	10%
People with a Disability	18%	9%	25%
Single-Parent Family	14%	14%	20%
Cost-Burdened Renter	10%	11%	15%

Source: 2005-2009 and 2010-2014 American Community Survey 5-Year Average, MTC analysis.

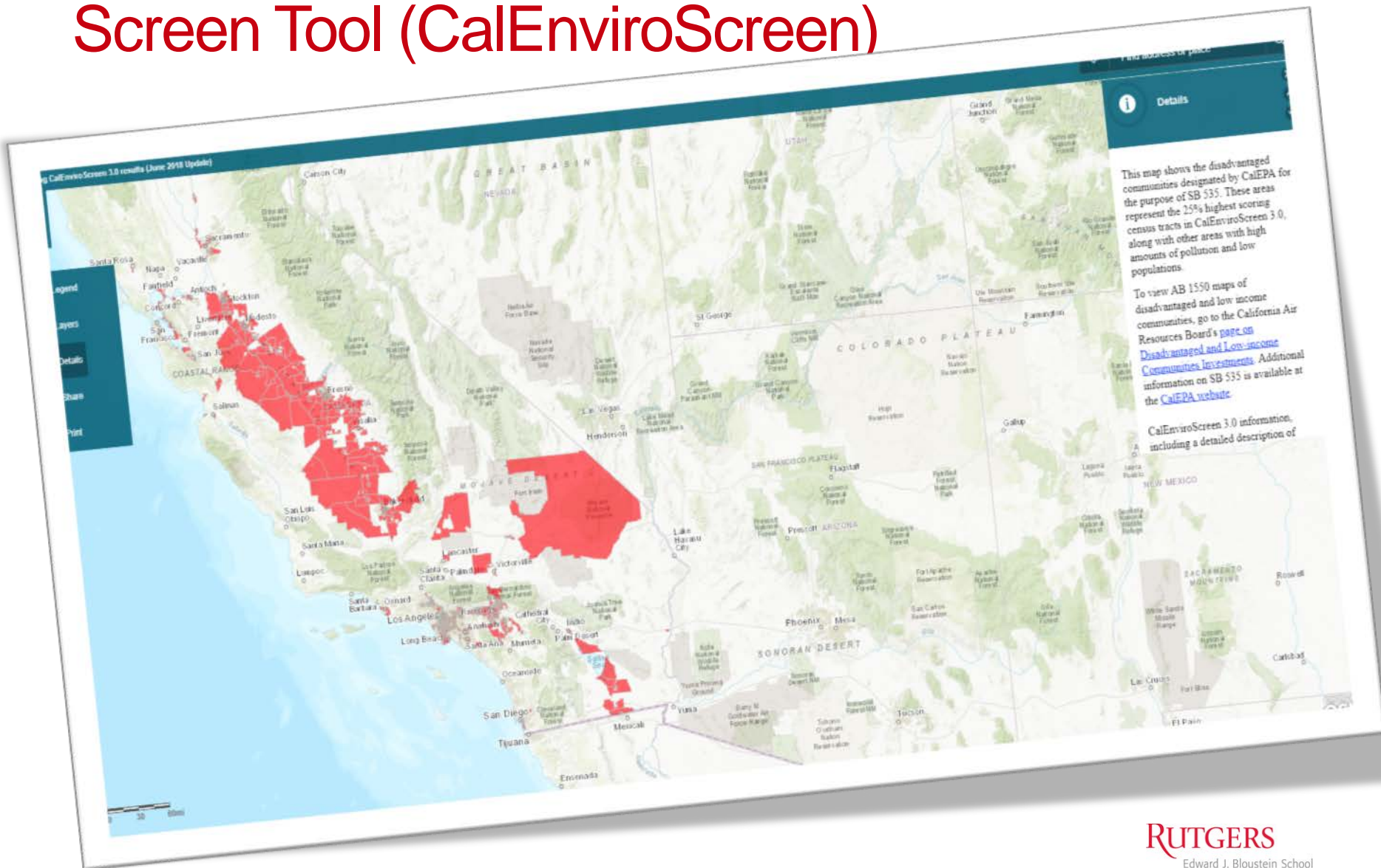
* Concentration thresholds are higher than the regional mean (average) but below one standard deviation.

SB 535 AND AB 1550: Disadvantaged Communities

- **SB 535** requires at least 25% of the proceeds go to projects that provide a benefit to disadvantaged communities and at least 10% of the funds go to projects located within those communities.
- **AB 1550** requires at least 25% of funds go to projects within and benefitting disadvantaged communities and at least an additional 10% is for low-income households or communities.
- Disadvantaged communities are defined as the top 25% scoring areas from CalEnviroScreen along with other areas with high amounts of pollution and low populations.



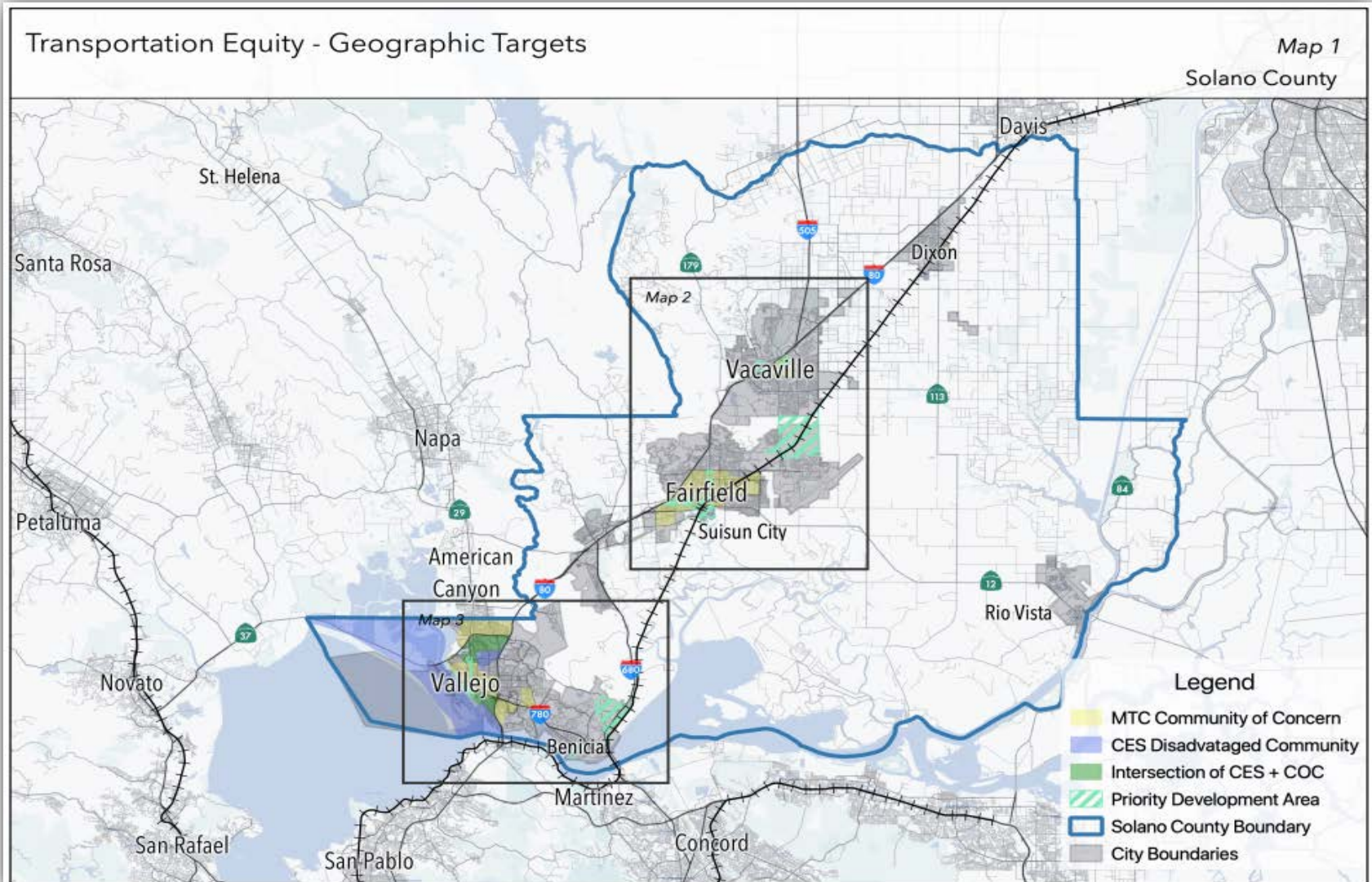
California Communities Environmental Health Screen Tool (CalEnviroScreen)



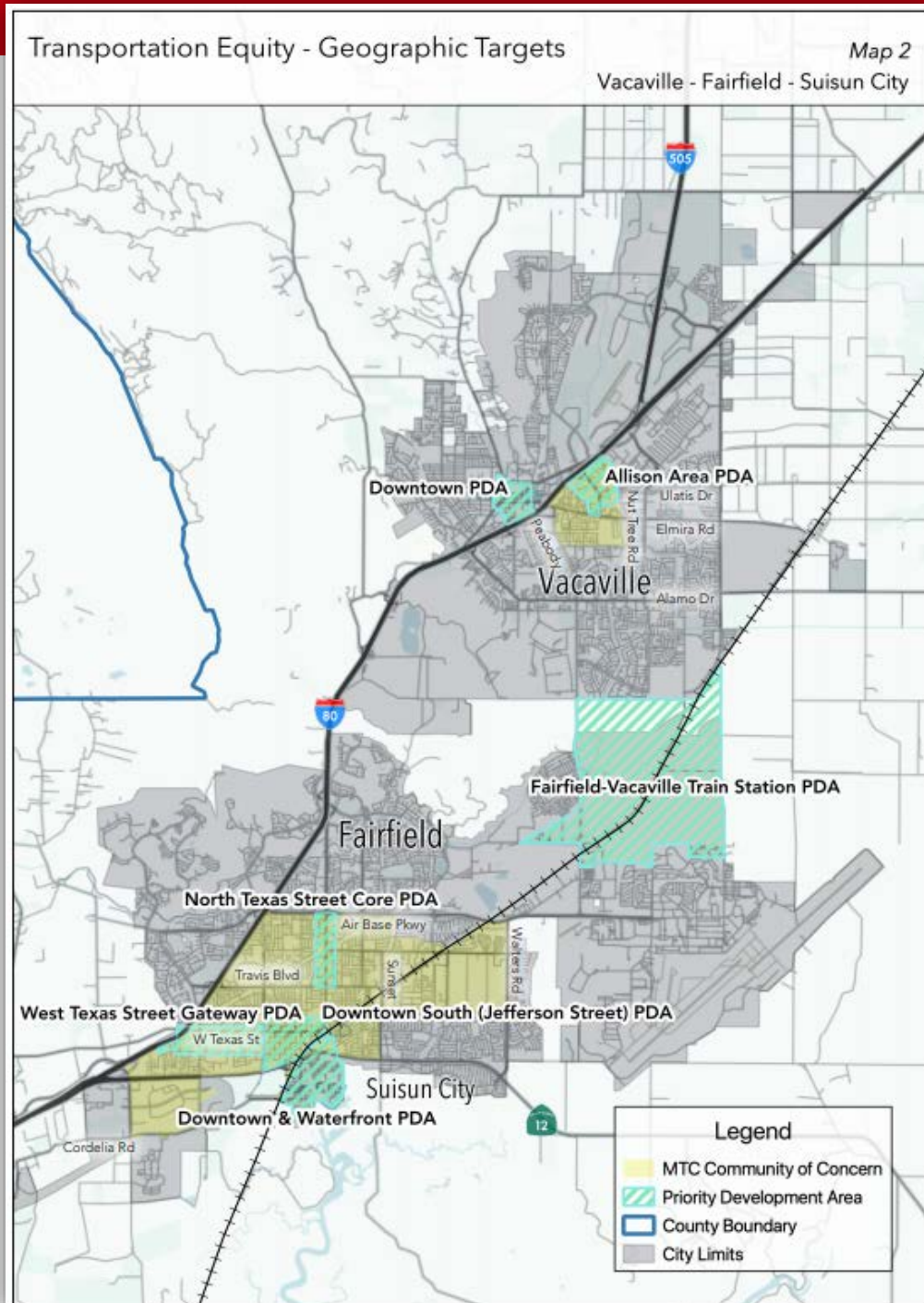
SOLANO COUNTY FRAMEWORK



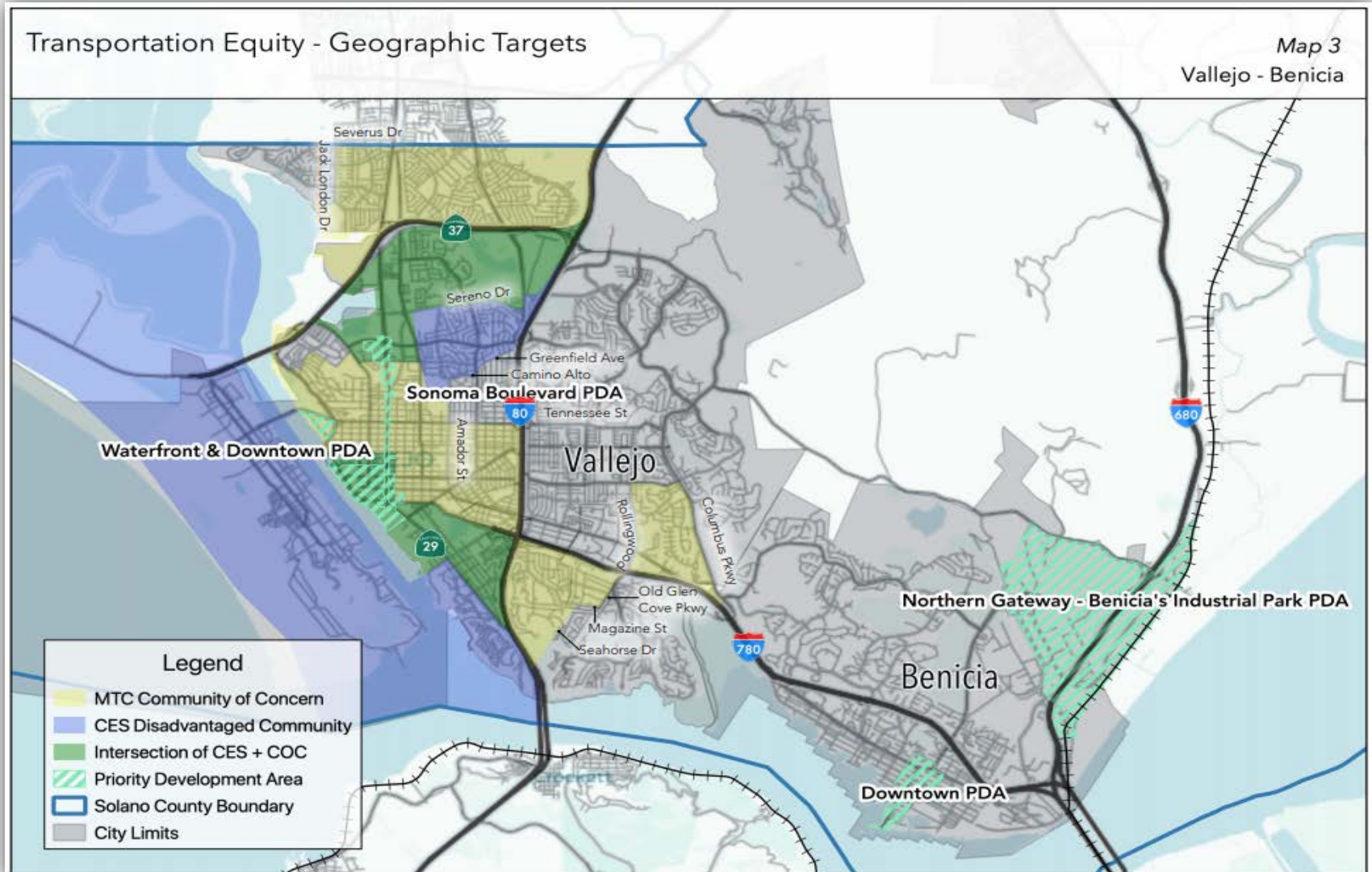
Geographic Areas for Equity Analysis in Solano County



Geographic Areas for Equity Analysis in Solano County



Geographic Areas for Equity Analysis in Solano County





THANK YOU