

# RESILIENTSR37

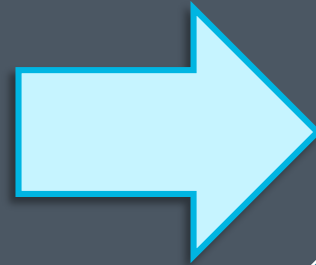
*Integrating Transportation, Ecology, and Sea Level Rise Adaptation into One Design*

**SR 37 Policy Committee  
November 2, 2017**

Image: San Pablo Bay National Wildlife Refuge, USFWS



# Design Alternative Assessment Aims to Break Delivery Paradigm: Expedite Operational Project Delivery for Immediate Relief



# SR 37 [SR 121 → Mare Island]

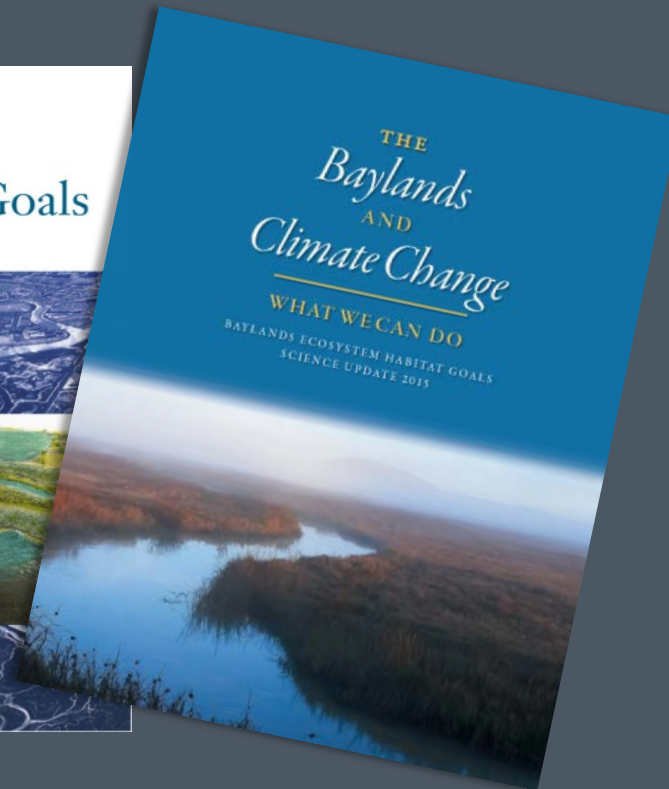
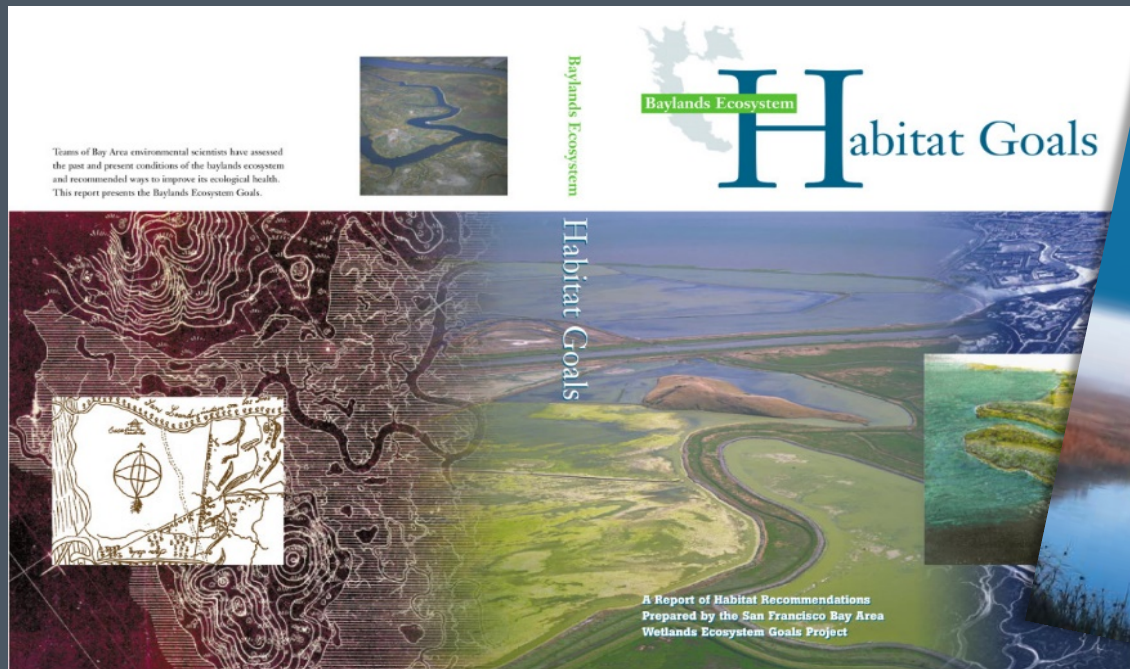
## Transportation, Ecosystem, & Sea Level Rise Adaptation Project

- **A Raised Roadbed That Provides Resiliency to Long Term Sea Level Rise Threat through Year 2100**
  - Design for 66" SLR + 100-Year Storm
  - New Elevation: 17' - 20' (NAVD 88)
- **Ecological Enhancement**
  - Wetland Hydrological Connectivity
  - Living Levees that Provide Habitat Opportunities
- **Greater Capacity to Address Travel Demand**
  - New Managed Lane(s)
- **Multimodal and Local Access Improvements**
  - Improve Bay Trail/Bike Access
  - Provide Transit Service
  - Intersection and Interchange Improvements at SR 121, Mare Island



# SR-37 Baylands Group Vision and Guiding Principles

*“Integrate infrastructure improvements for SR 37 with existing and future habitat planning, conservation and restoration to ensure healthy ecosystem function and resilience to landscape scale change of the San Pablo Bay.”*



# One Design, Many Inputs



Transportation



Ecosystem



Sea Level Rise Adaptation



# Project Goals

## ONE DESIGN



Integrate transportation, ecosystem, and sea level rise adaptation into **one design**

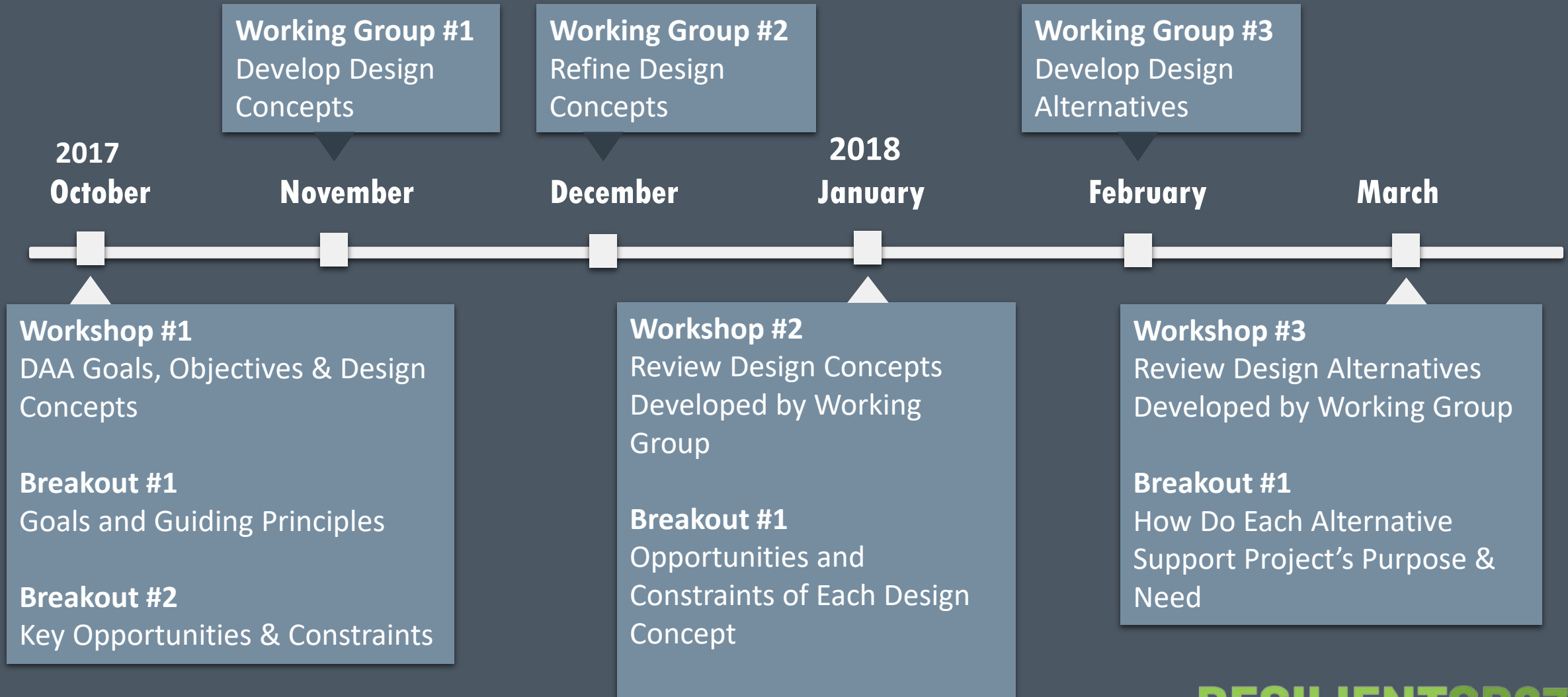


Improve **mobility** across all modes and maintain public access



Increase corridor **resiliency** to storm surges and sea level rise

# Environmental Stakeholder Outreach Series



# SR 37 Environmental Workshop Participants

- Coastal Conservancy
- Sonoma Land Trust
- SF Estuary Institute
- SF Bay Joint Venture
- Ducks Unlimited
- Point Blue
- Marin Audubon Society
- Solano Land Trust
- California Department of Fish and Wildlife
- U.S. Fish and Wildlife Service
- The Nature Conservancy
- BCDC
- SF Bay Regional Board
- Army Corps of Engineers
- National Marine Fisheries Service
- U.S. EPA
- State Lands Commission
- Vallejo Sanitation & Flood Control District
- Caltrans
- Solano Transportation Authority
- Sonoma County Transportation Authority
- Transportation Authority of Marin
- Napa Valley Transportation Authority
- MTC
- Solano County Resource Management
- Alta Planning
- UC Davis





