

# Working Together for a Resilient North Bay Landscape



Photo courtesy of Sonoma Land Trust



**Jessica Davenport, State Coastal Conservancy**  
**SR 37 – Baylands Group**  
**Presentation to State Route 37 Policy Committee**  
**November 2, 2017**

# Presentation Outline

## SR 37 – Baylands Group

- Who We Are
- Vision Statement and Guiding Principles
- Flood Control 2.0 as a Model for Collaborative Design





# SR 37 – Baylands Group formed in response to accelerated action due to flooding



Photo courtesy of The Press Democrat

# SR 37 – Baylands Group: Who We Are

- North Bay wetland land managers
- Ecological restoration practitioners, and
- Other stakeholders with a long-term interest in the conservation and restoration of the San Pablo Baylands



Photo courtesy of Ducks Unlimited

# State Coastal Conservancy's Role

- Long-term funder of San Pablo Baylands restoration
- Coordinator of the SR 37 – Baylands Group
- Promoting collaboration with transportation and regulatory agencies
- Funded Baylands Goals Science Update 2015







# Why CARE ABOUT WETLANDS?

Tidal marshes like Cullinan Ranch and those in the Napa-Sonoma Marshes Wildlife Area play a critical role for life on Earth. They provide vital wildlife habitat, protect shorelines, clean pollutants, buffer the impacts of floodwaters and rising sea level, slow climate change by storing carbon, and offer a wealth of public recreation opportunities.

**Waterfowl CAN'T SURVIVE WITHOUT WETLANDS**  
Every species of duck, goose, and swan in North America depends on wetland habitat throughout their life cycle.

**Endangered Species DEPEND ON WETLANDS**  
Almost half of America's threatened and endangered species need wetlands for survival at some point in their lives. Over a third of these species live only in wetlands.

**"Wetland Soup" FEEDS YOUR FOOD WEB**  
A nutritious broth of insects, invertebrates, bacteria, algae, and decaying wetland plants feeds a web of life that provides meals for a rich diversity of species - including us!



**Boost Your Wellness WITH WETLAND RECREATION**  
Hiking, bird watching, boating, fishing, hunting, and other outdoor recreational activities available at wetlands can enrich your quality of life and improve your physical and mental health.

**Wetlands Improve WATER QUALITY**  
Household waste, toxic chemicals, fertilizer runoff, and other human-caused pollutants can be trapped or broken down in wetlands where plants and bacteria break it down into less harmful substances.



**Got Crab? Or Salmon? THANK A WETLAND!**  
Dangerous crabs, salmon, striped bass, clams, and oysters need wetlands during part or all of their life cycles. So do many other commercially and recreationally important seafood species.

Image courtesy of Ducks Unlimited

## **Vision: Integrate, Don't Mitigate**

Integrate **infrastructure improvements** for SR 37 with existing and future **habitat** planning, conservation and restoration to ensure **healthy ecosystem function** and **resilience** to landscape scale change of the San Pablo Bay.

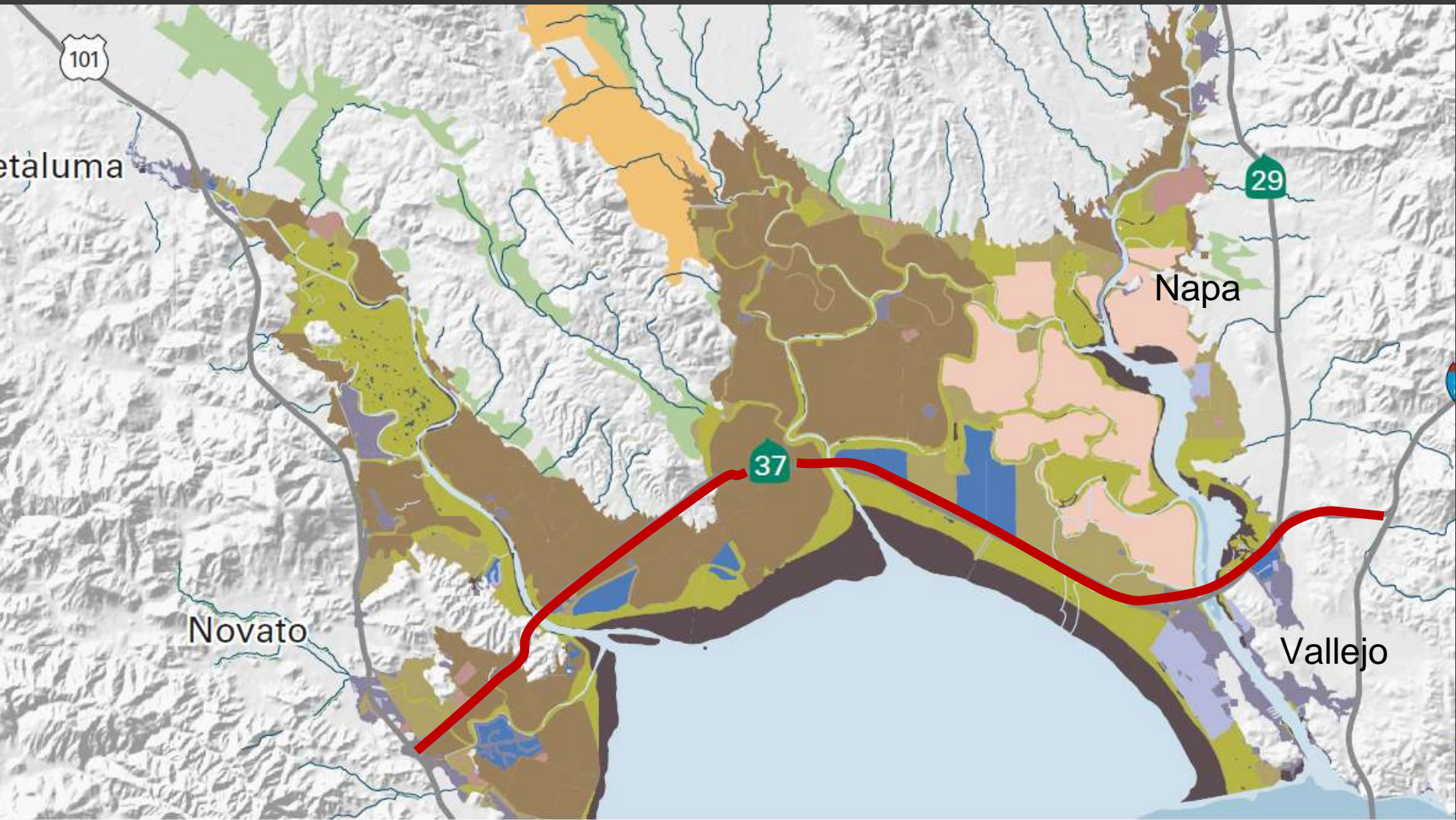


# Baylands Goals are the Blueprint



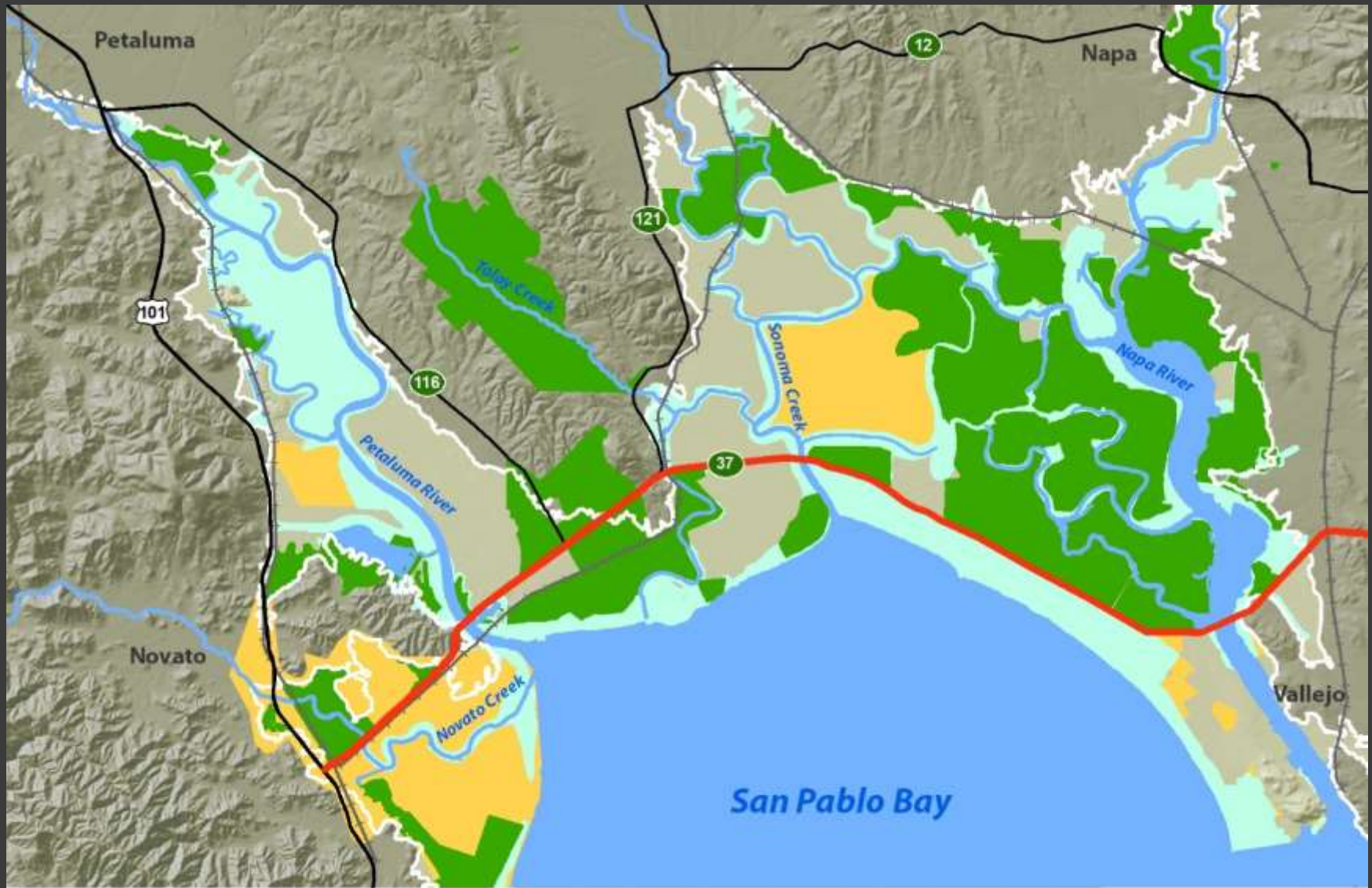


# Baylands Habitats, 1998





# Restoration to Date and Planned



- State Route 37
- Historical Baylands Boundary
- Restoration in Progress or Complete
- Railroad
- Tidal Marsh
- Restoration in Planning

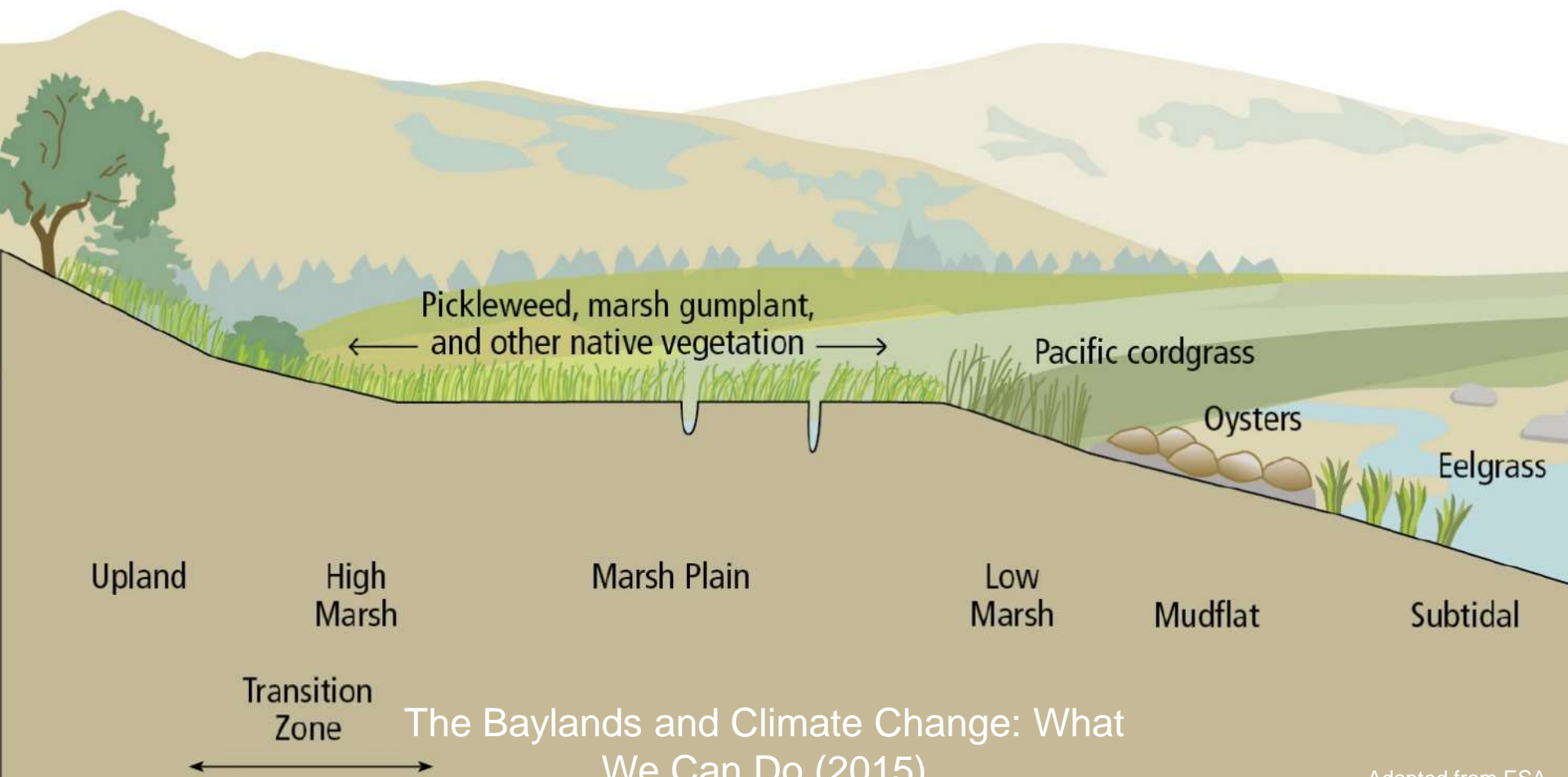




# TODAY

- SR 37 elevation at or just above sea level
- Mostly within San Pablo Baylands historical marshes
- Surrounded by ~30,000 acres of protected and restored habitat
- Investment in ecosystem exceeds \$600 million for conservation and restoration

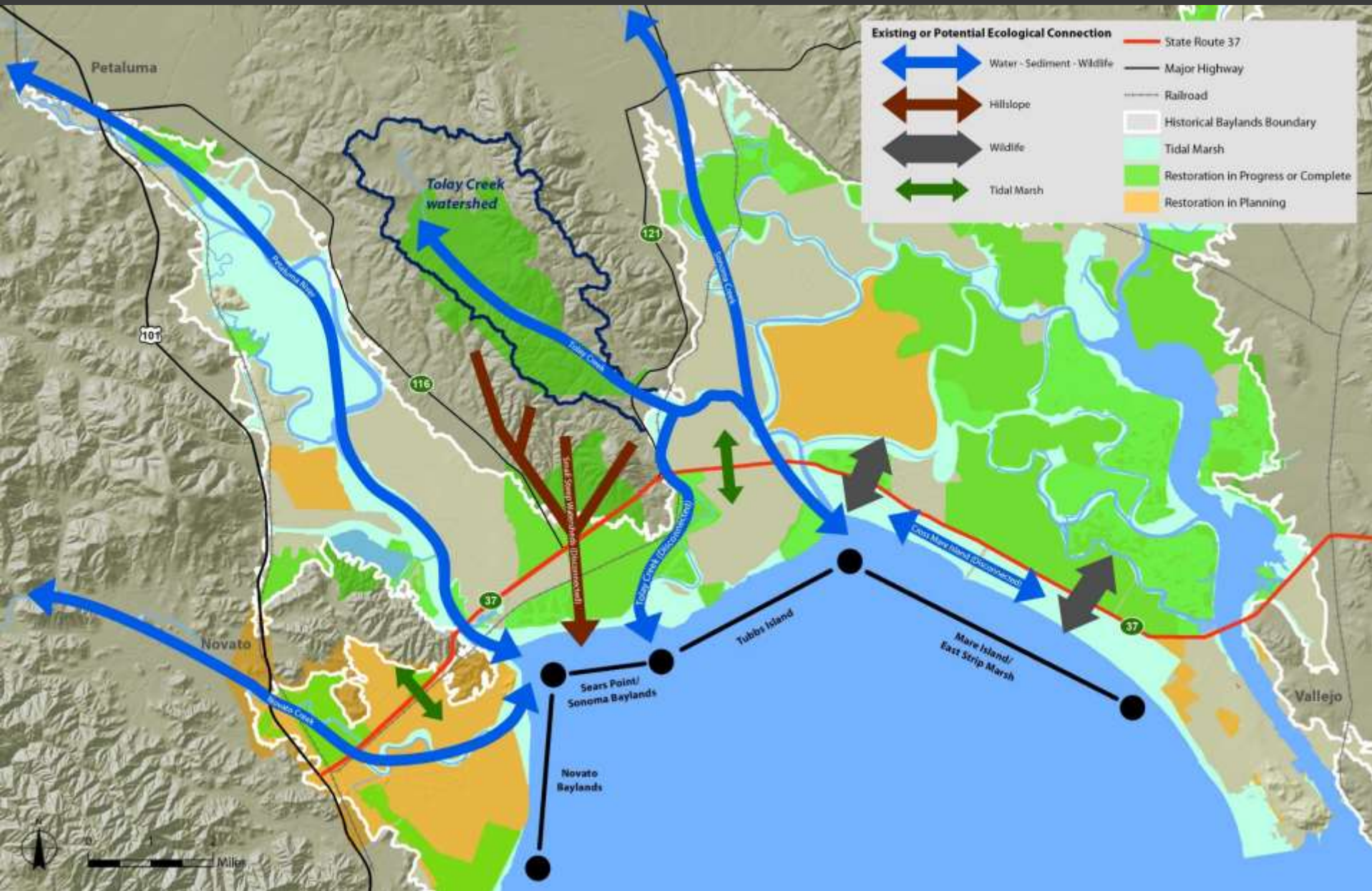
# Restore COMPLETE SYSTEMS



The Baylands and Climate Change: What We Can Do (2015)



# Improve Ecological Connectivity



# From Uplands To The Bay





# PLAN FOR THE BAYLANDS TO *migrate*



Baylands and Climate Change: What  
We Can Do (2015)

# Accommodate Future Sea Levels, River Flows, and Floodplains



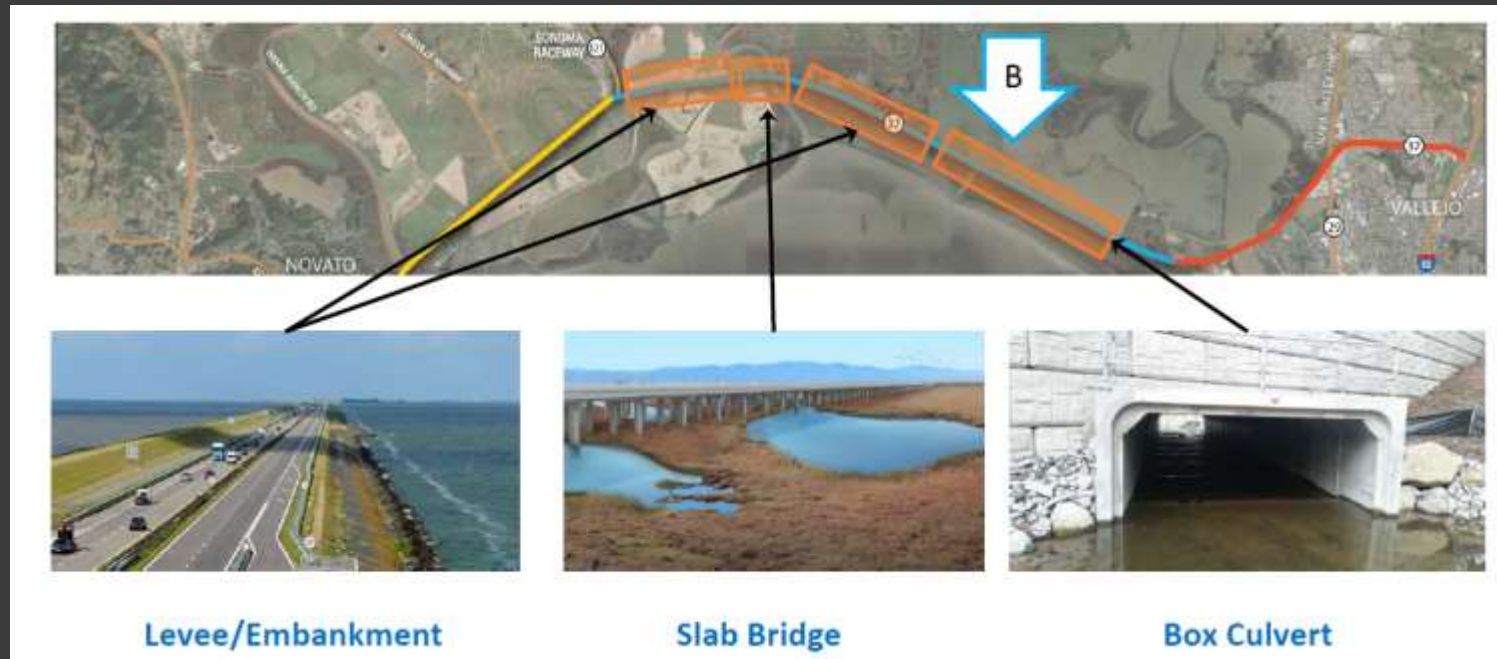


# Avoid or Minimize Direct Impacts To Habitats And Wildlife





# Seeking solutions that elevate SR 37 and allow for full passage of sediment, water and wildlife



- Raised roadbed with a combination of embankment, box culverts, slab bridge

# SR 37 – Baylands Group Work Plan

June 2017

Nineteen agencies and NGOs meet and form Baylands Group

Aug. – Oct. 2017

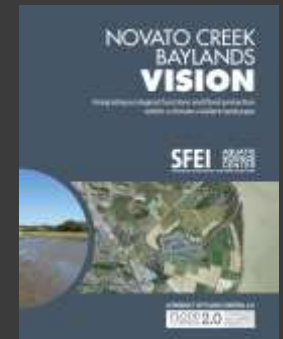
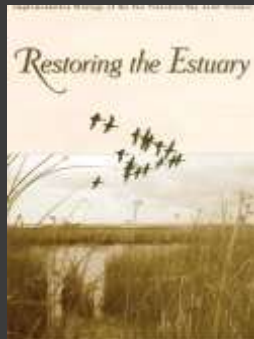
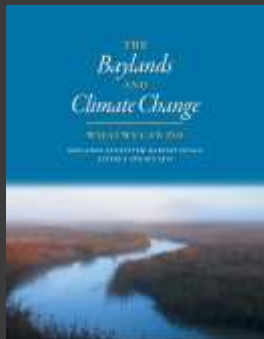
Develop white paper and comment on Draft Corridor Plan

Aug. – Oct. 2017

Collaborate with MTC to design env. workshop series

Oct. 2017 –Mar. 2018

Collaboration on DAA through Environmental Working Group





# Flood Control 2.0 as a Model Process: Novato Creek Baylands Vision

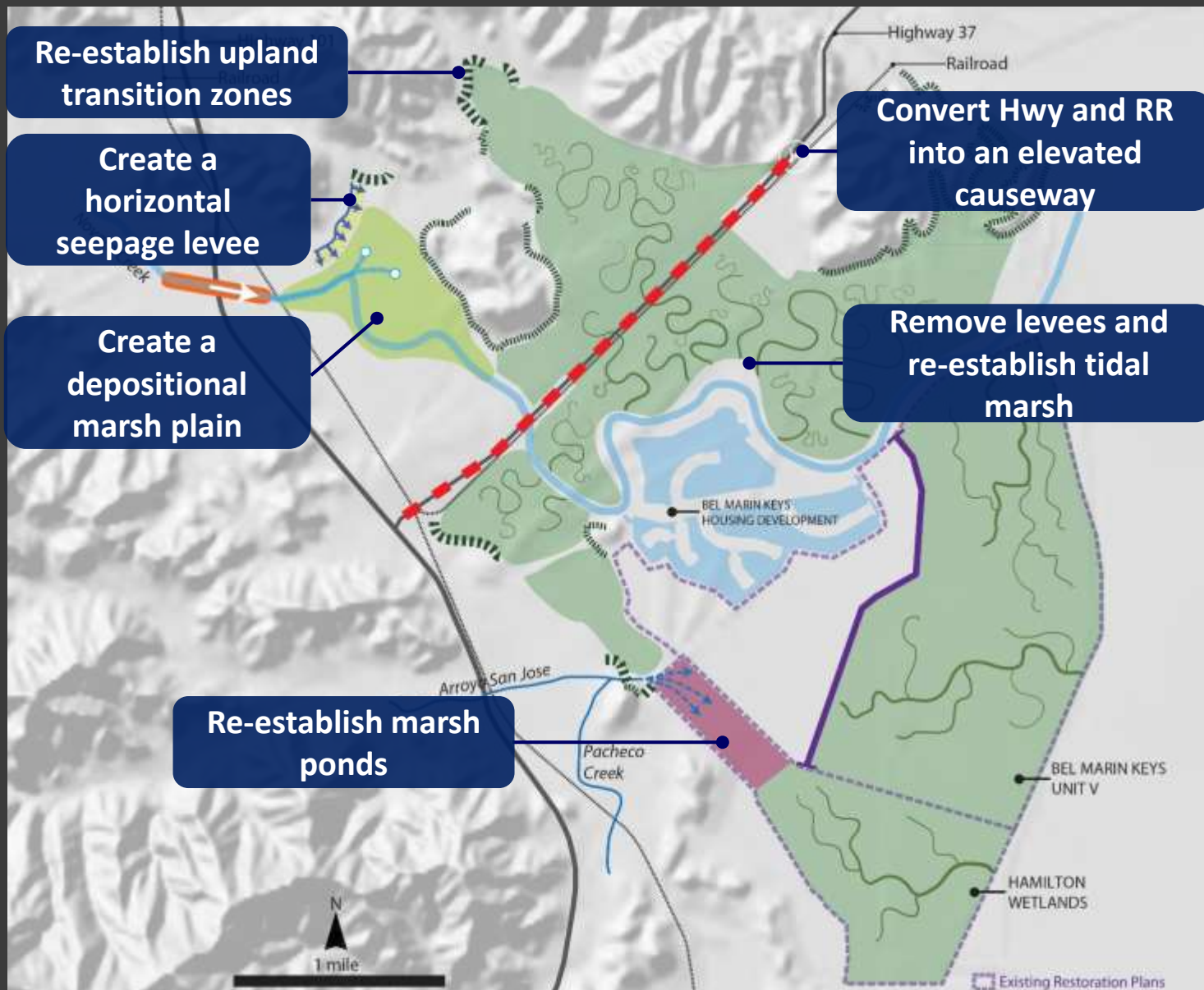


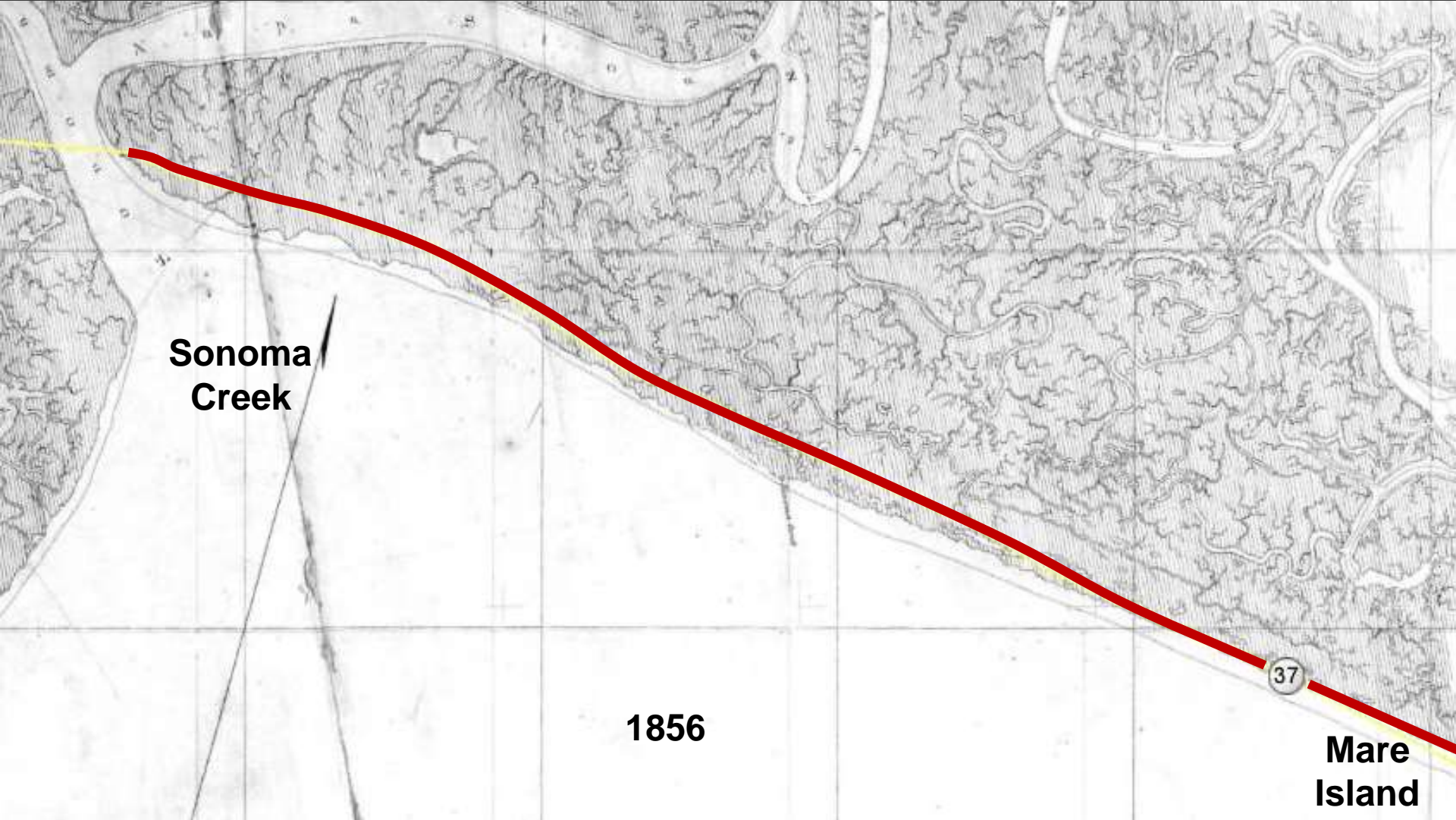
Image courtesy of San Francisco Estuary Institute

# Questions?



Photo courtesy of Ducks Unlimited



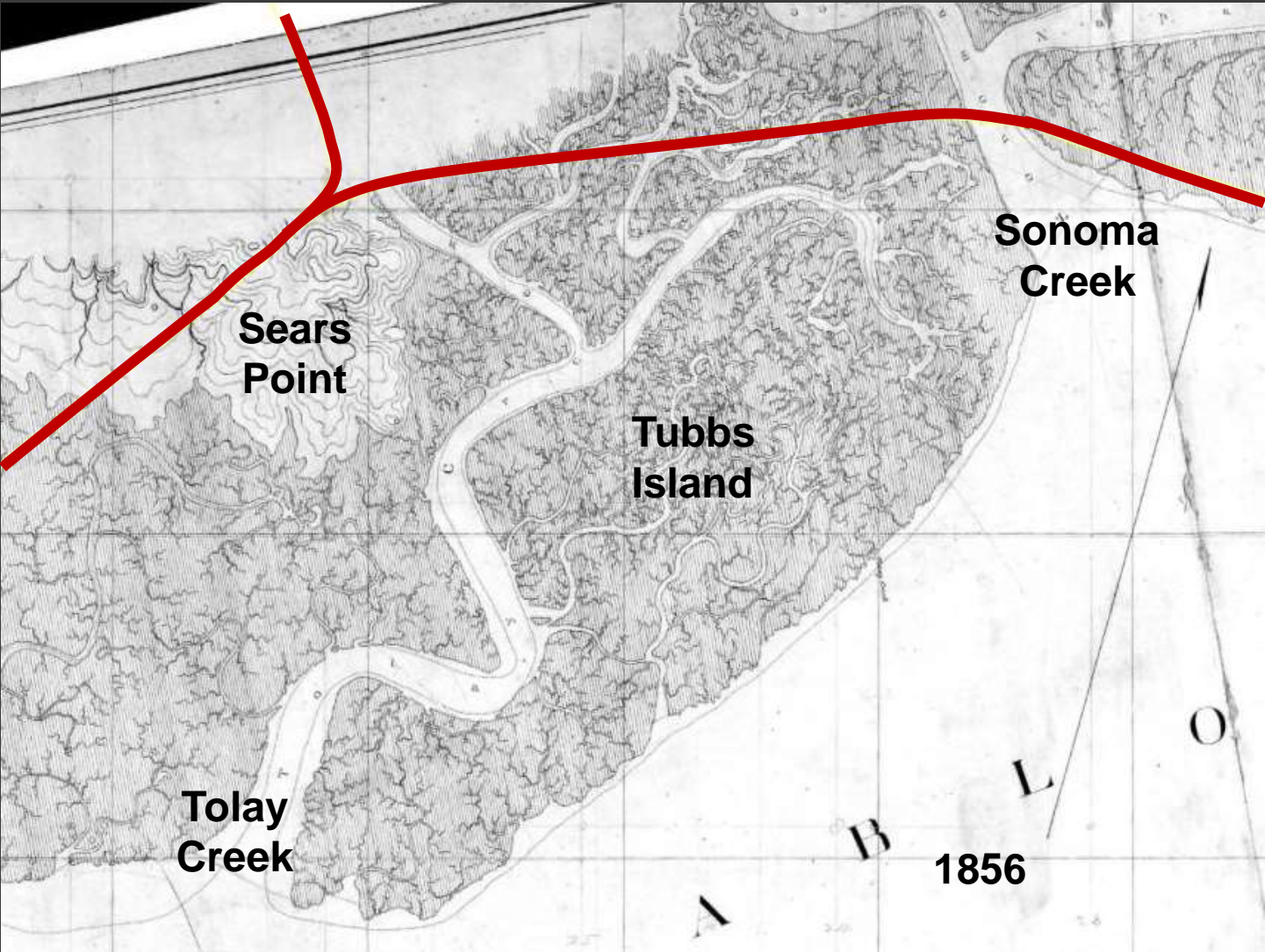


**Sonoma  
Creek**

**1856**

37

**Mare  
Island**



**Sears  
Point**

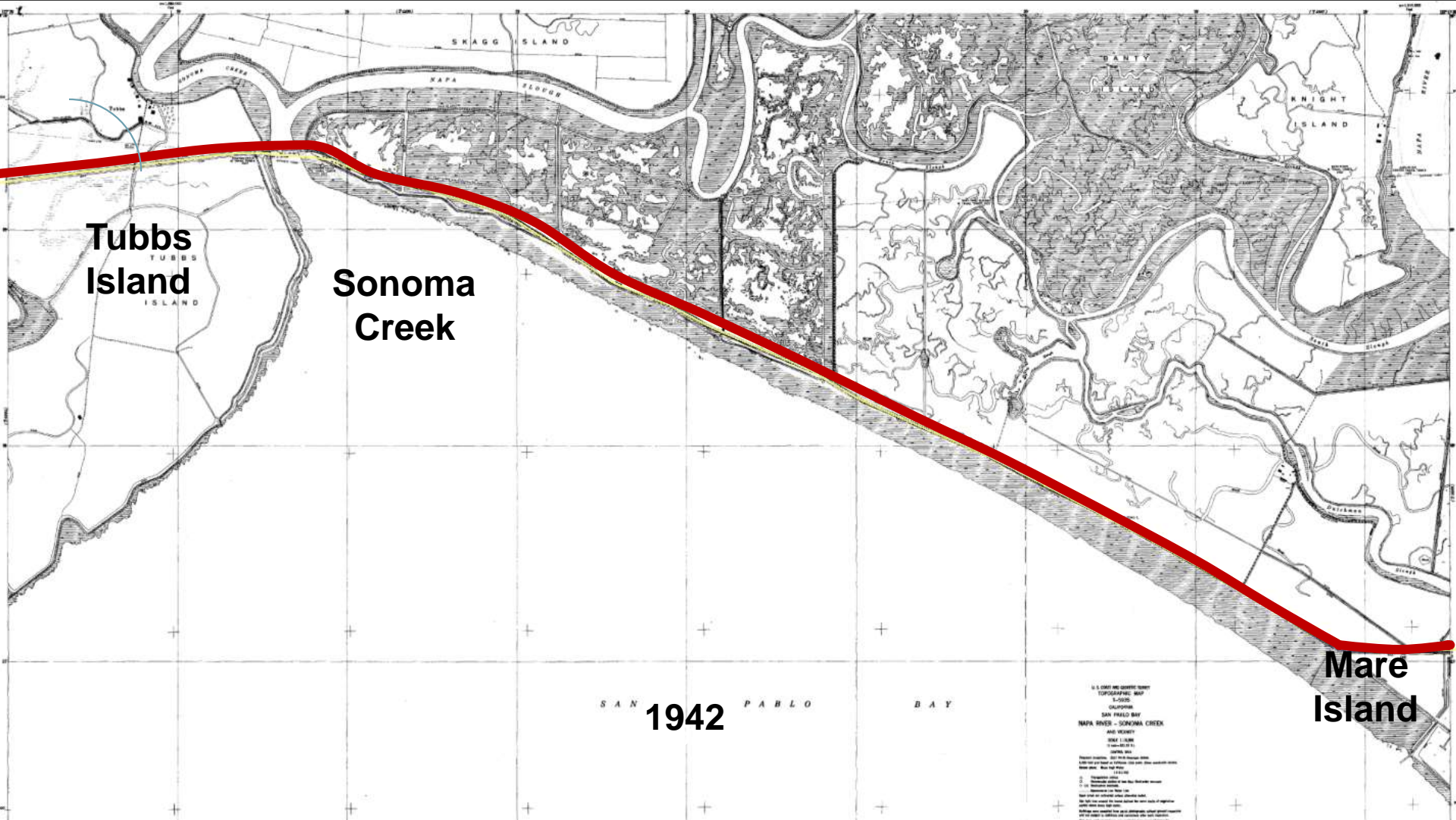
**Tubbs  
Island**

**Tolay  
Creek**

**Sonoma  
Creek**

**1856**





**Tubbs  
Island**

**Sonoma  
Creek**

SAN 1942 PABLO BAY

**Mare  
Island**

U. S. GOVERNMENT PRINTING OFFICE  
TOPOGRAPHIC MAP  
SCALE  
CALIFORNIA  
SAN PABLO BAY  
NAPA RIVER - SONOMA CREEK  
AND VICINITY  
SHEET NUMBER  
1:25,000  
1942  
This map is published under authority of the War Relocation Authority.  
It is a reproduction of a map published by the War Relocation Authority.  
The original map was published by the War Relocation Authority.  
The original map was published by the War Relocation Authority.  
The original map was published by the War Relocation Authority.