

# State Route 37 Transportation and Sea Level Rise Corridor Improvement Plan

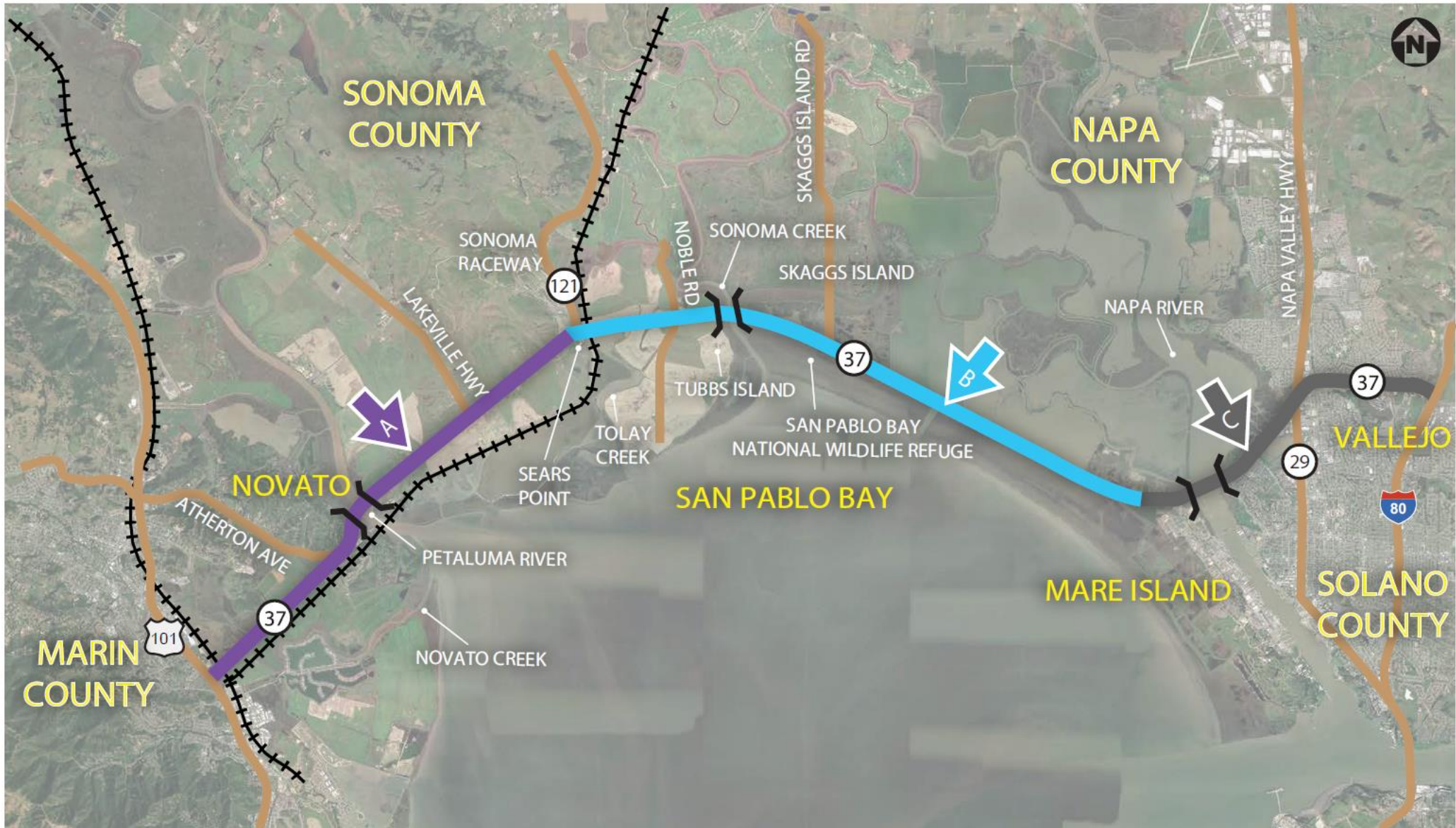
Policy Committee: November 2, 2017



With Support From:



# The SR 37 Corridor



# Goals and Objectives



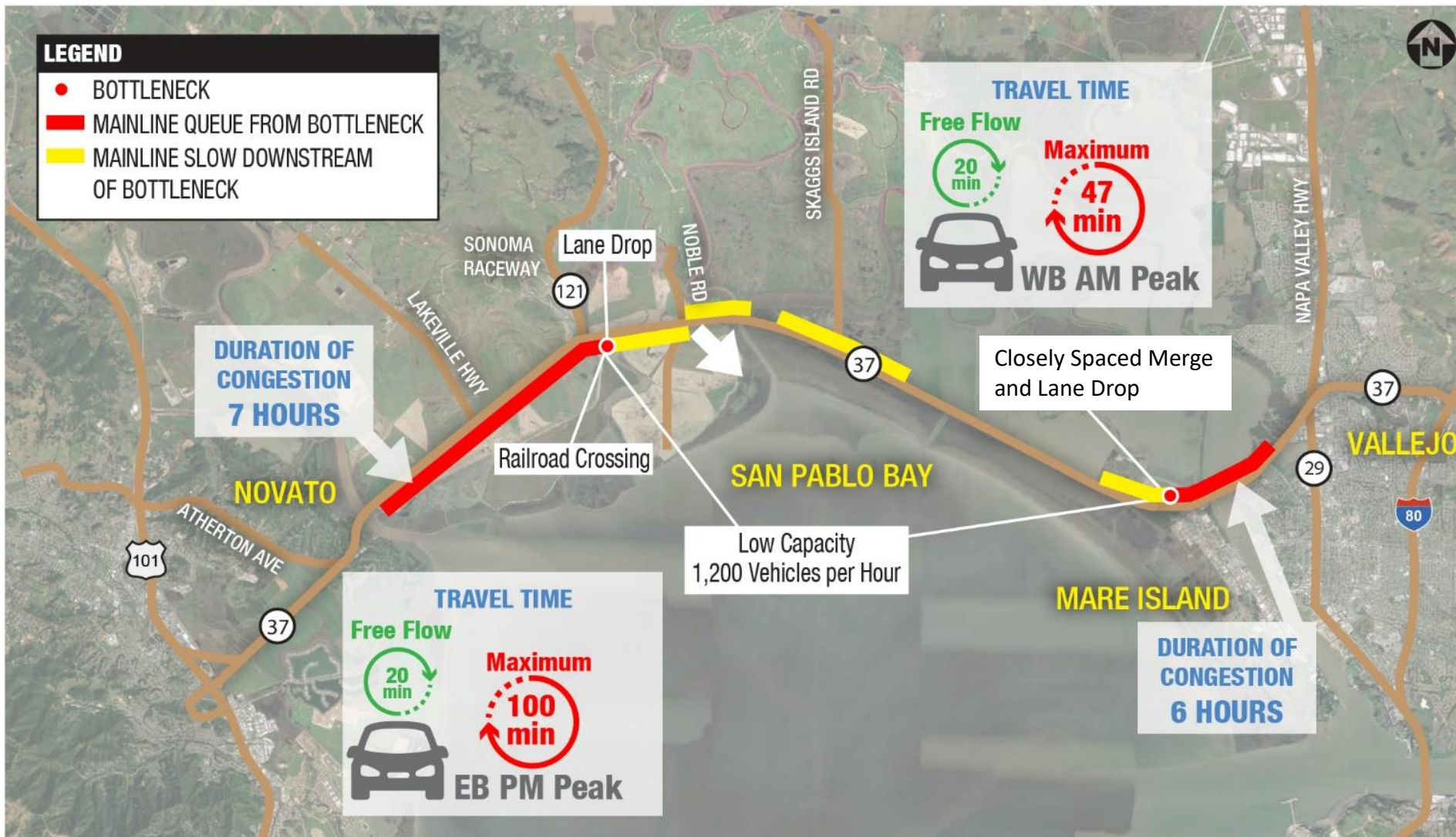
**Produce an integrated transportation and ecosystem design**

**Improve mobility across all modes and maintain public access**

**Increase corridor for resiliency to storm surges and sea level rise**



# 100 Minutes to Travel Back Home Every Day



- **6 Hours** of Congestion During Weekday AM Commute (Westbound)
- **7 Hours** of Congestion During Weekday PM Commute (Eastbound)
- **Weekend** Congestion Throughout Most of the Day
- **No Transit** Services

Source: Kimley-Horn, 2017.

# Segment B is the Priority Segment



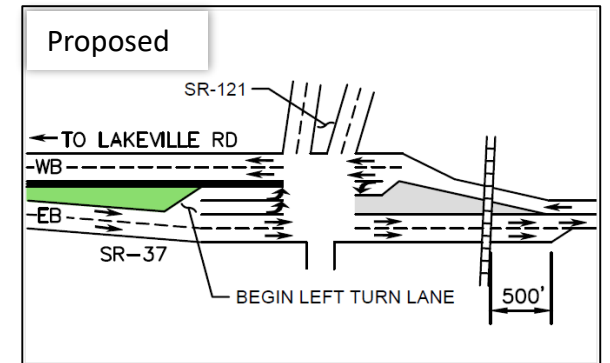
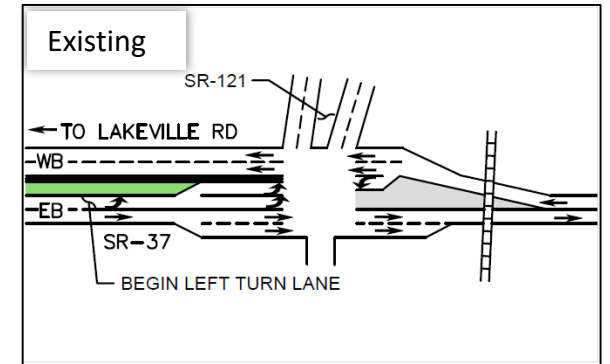
Segment Risk Rating	Segment A	Segment B	Segment C
Effect on Existing Traffic Congestion	1	3	1
Effects on Environmental Resources	2	3	1
Impacts Due to Sea Level Rise	3	3	1
Economic Impact on Commuters	3	3	3
Economic Impact on Goods Movement	2	3	3
Impacts to Recreational Activities	2	3	2
Length of Segment Impacted/Capital Improvement Cost	3	3	1
<b>Composite Risk Rating</b>	<b>2</b>	<b>3</b>	<b>2</b>

Note: Risk ratings were assigned as follows: 1.0 - 1.4 (low), 1.5 - 2.4 (moderate), and a 2.5 - 3.0 (high)

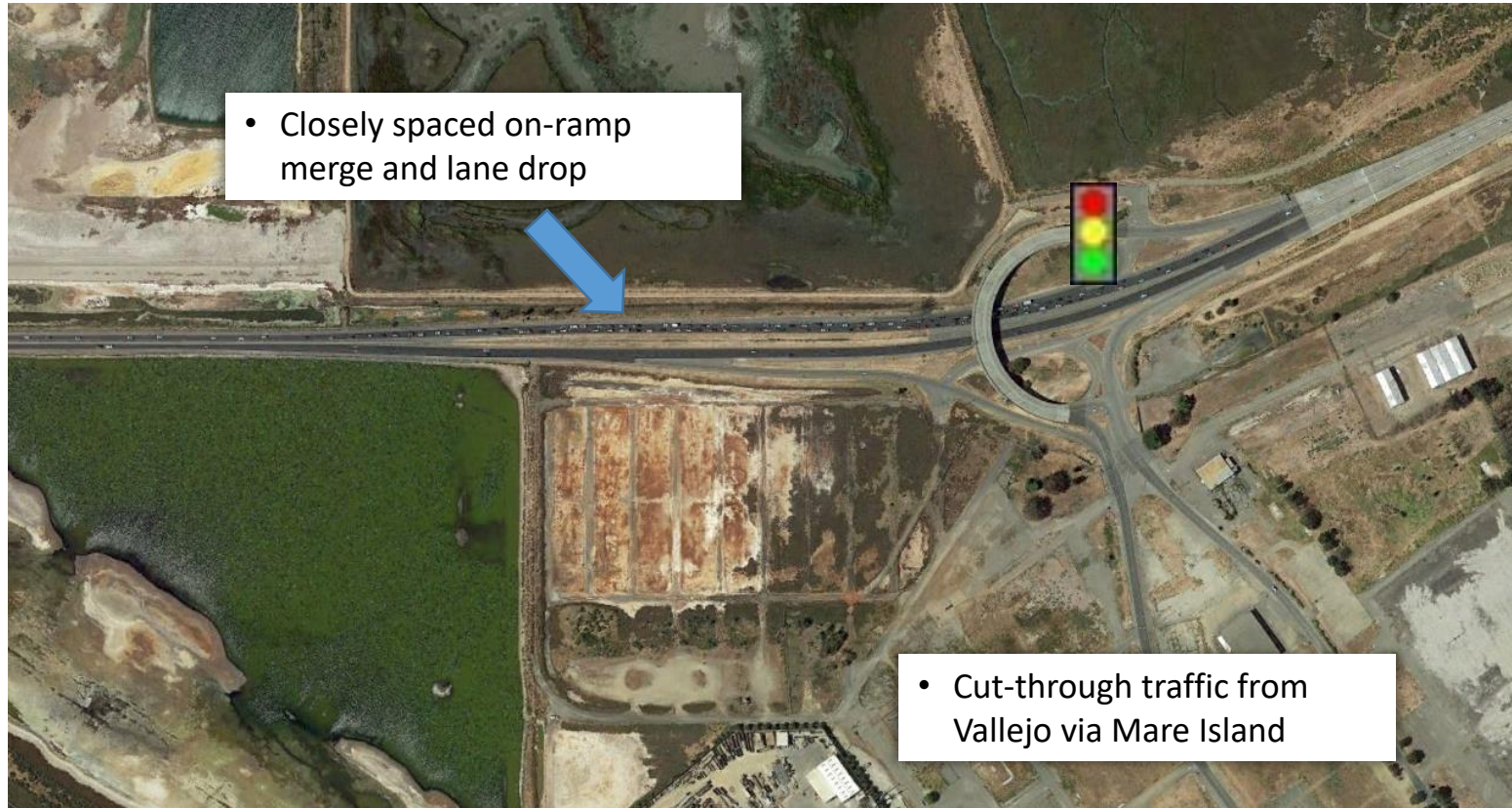
# Near-Term Operational Improvements at SR 121



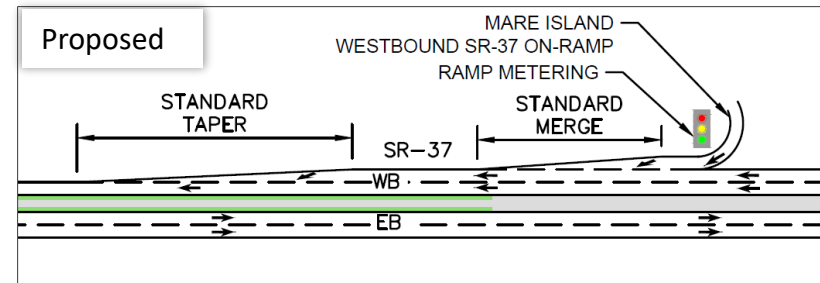
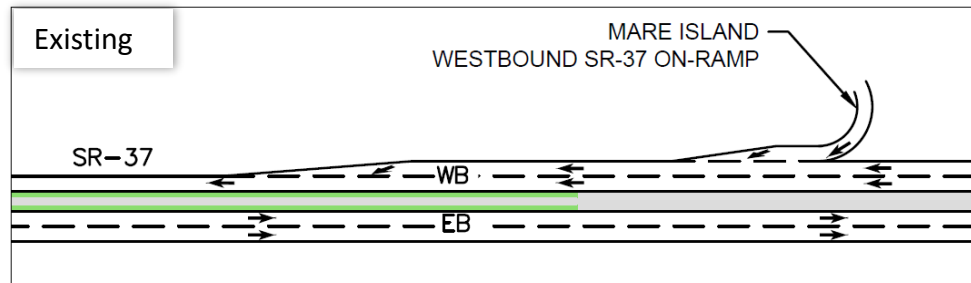
- Extend 2 Eastbound Lanes East of Railroad Crossing
- SR 121 Intersection Improvements
- Increase Existing Throughput



# Near-Term Operational Improvements – WB at Mare Island



- Metering Westbound on-ramp
- Improve on-ramp and lane drop merges
- Increase Existing Throughput



# Recommendation

- Approve the following:
  1. Support Segment B as the priority corridor segment from Mare Island Interchange to SR 121 for the Phase 2 Design Alternatives Assessment
  
  2. Support the following Phase 1 Near Term Project priorities for 2018 SHOPP projects:
    - a. SR 37/SR 121 Intersection Improvements
    - b. SR 37/Mare Island Interchange Improvements
      - Metering at Mare Island WB on-ramp
      - Westbound merge and lane drop improvements west of Mare Island on-ramp
    - c. SR 37 near term flooding improvements corridor wide



# Next Steps – Focus on Priority Segment B

- Develop Preliminary Design for Segment B:
  - 3-Lane and 4-Lane Options
  - Hybrid Roadbed Design Option: Causeway/Box Culvert/Levee
  - Interchange Improvements at Mare Island and SR 121
  - Bay Trail/Bike Facility options
  - Refine Cost Estimates
- Near-Term Operational Improvements at SR 121 and at Mare Island
- Conduct Traffic Analysis for the Corridor
- Develop Shoreline/Flood Protection Strategies (Near-Term)
- Evaluate Transit Options for the Corridor
- Environmental Community Outreach & Public Outreach
- Complete Phase II/Design Alternative Assessment by Spring, 2018