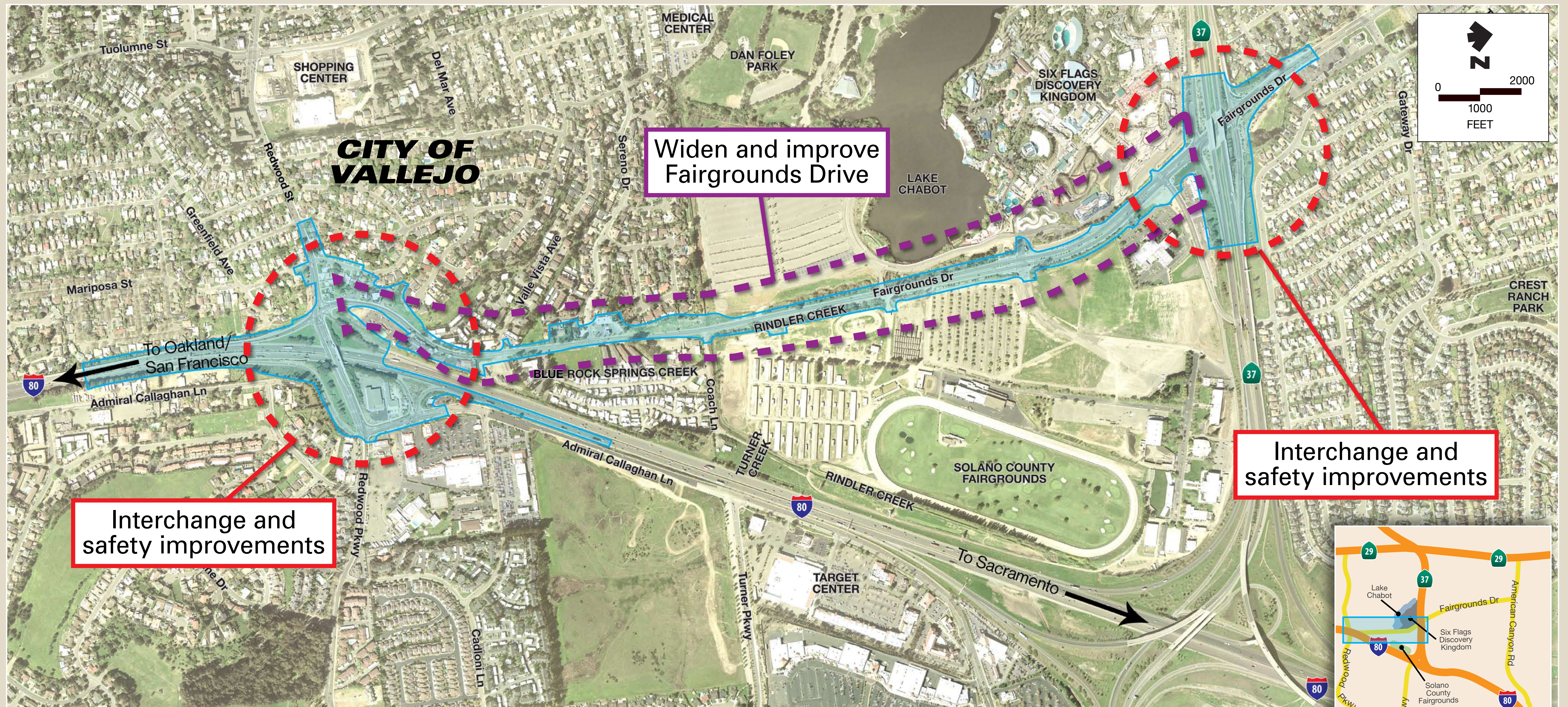


PROJECT IMPROVEMENTS



**REDWOOD PARKWAY-FAIRGROUNDS DRIVE
IMPROVEMENT PROJECT**
www.solanolinks.com

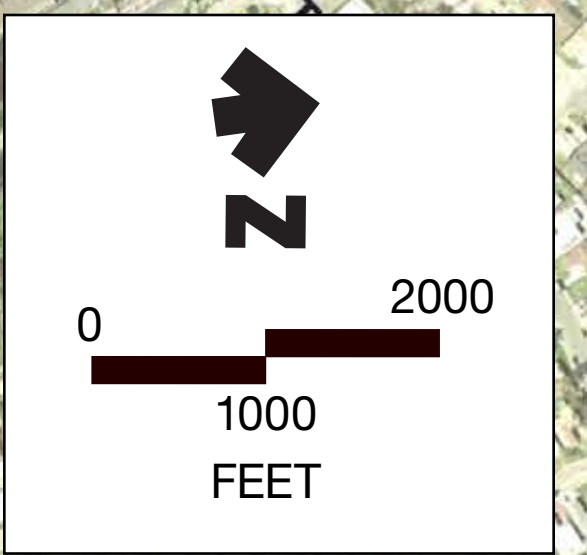
PROJECT PURPOSE AND NEED

- Address existing congestion and improve operations
- Provide improved local access for businesses and residences
- Provide needed capacity to accommodate existing and future traffic demand
- Reduce impacts to local residents, businesses and the environment



REDWOOD PARKWAY-FAIRGROUNDS DRIVE
IMPROVEMENT PROJECT
www.solanolinks.com

CURRENT TRANSPORTATION ISSUES



LEGEND

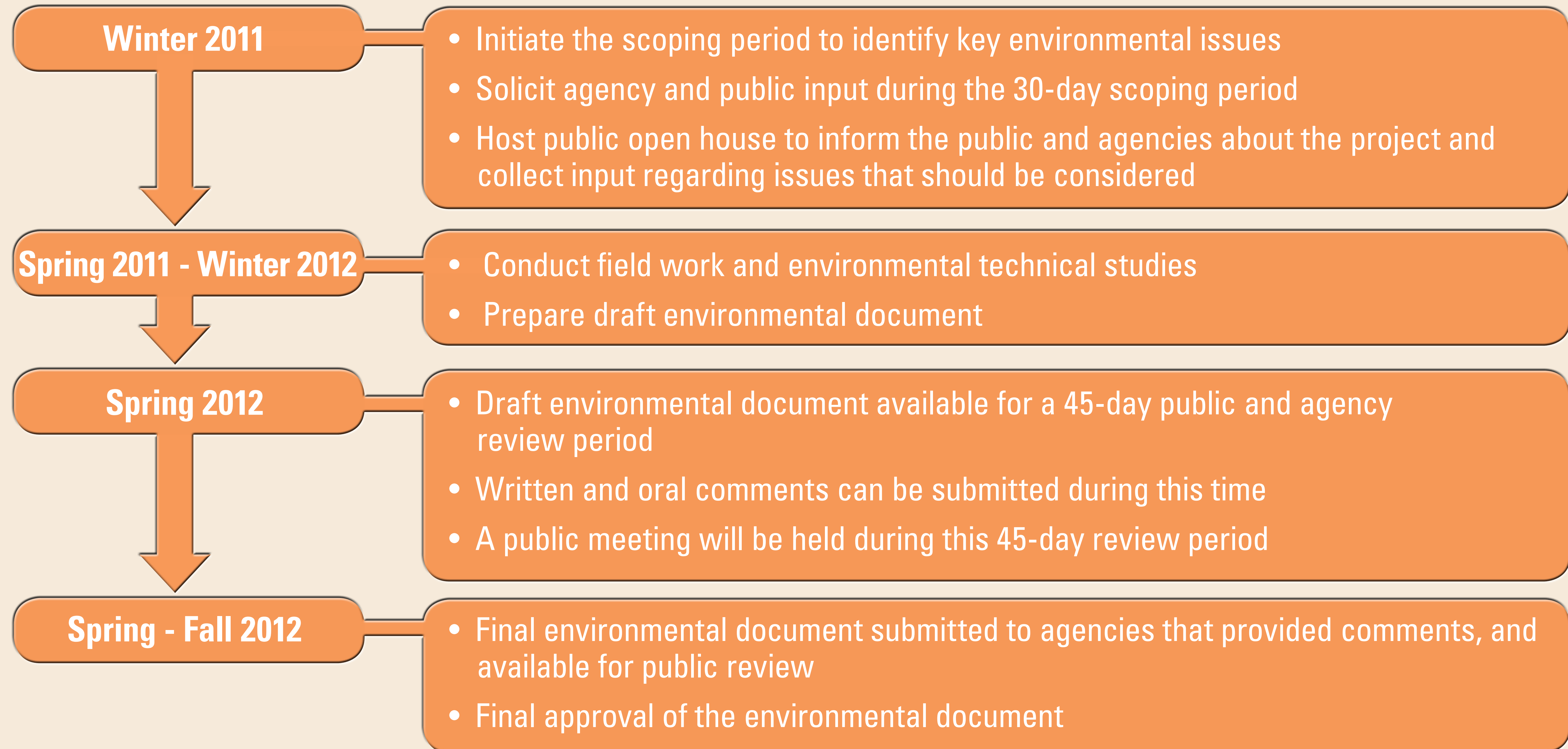
PROJECT AREA

- Poor circulation during peak travel times
- Higher-than-average accident rates for similar facilities
- Insufficient capacity for future traffic projections
- Intersections operate at a low level of service



**REDWOOD PARKWAY-FAIRGROUNDS DRIVE
IMPROVEMENT PROJECT**
www.solanolinks.com

OVERVIEW OF THE ENVIRONMENTAL PROCESS



OVERVIEW OF THE PROJECT

PROJECT SCHEDULE BY PHASE						
Project Phase	2010	2011	2012	2013	2014	2015
Preliminary Engineering/ Environmental Document						
Final Design & Right-of-Way Acquisition						
Construction						

Preliminary Engineering/Environmental Document Phase: Preliminary project plans and environmental reports, which evaluate the impacts of the project to the public and the environment, are prepared

The public will have the opportunity to comment on the materials throughout the process. The project plans and environmental documents must be approved by decision-makers for the project to move forward

Final Design Phase: Final design plans are developed and submitted to the approving agencies and any necessary right-of-way is acquired

Construction Phase: Construction



**REDWOOD PARKWAY-FAIRGROUNDS DRIVE
IMPROVEMENT PROJECT**
www.solanolinks.com